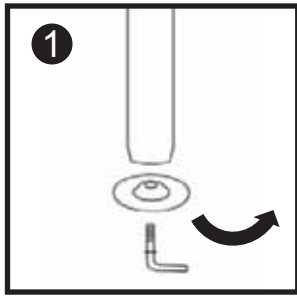
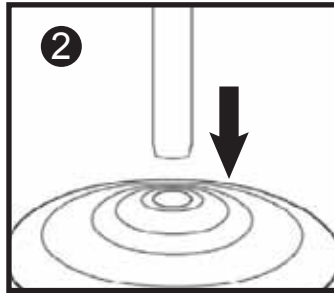


Please refer to the Instruction Manual for more details and images of the assembly procedure.

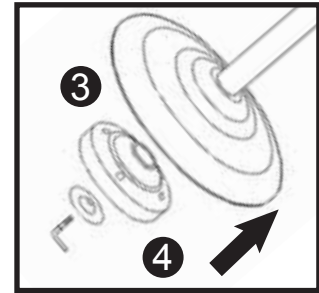
STEP 1: SET UP BASE AND STAND



Unscrew the **Locking Lever** and washer from the bottom of the stand post.



Insert the bottom of the **Stand Post** through the hold in the top of the **Base**.

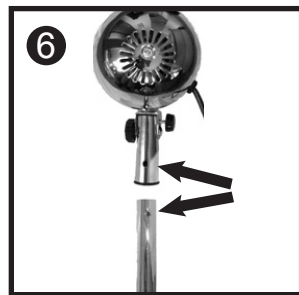


Tip up the **Base** and place the **Weight** in the centre of the base. Fasten in place by use of the **Locking Lever** and washer and tighten.

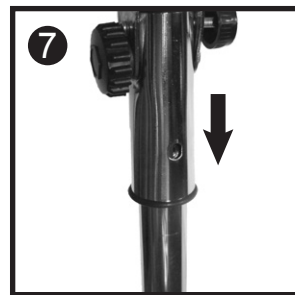
STEP 2: ATTACH HEAD TO STAND



Unscrew (anticlockwise) and remove the **Locking Knob** from the top of the stand upper post.



Sit **Motor Housing** on top of **Stand Post** with the hole in the neck and the hole on the upper post aligned as shown.

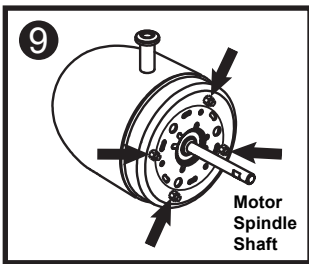


Push the head down onto the upper post until the two holes are overlapping.

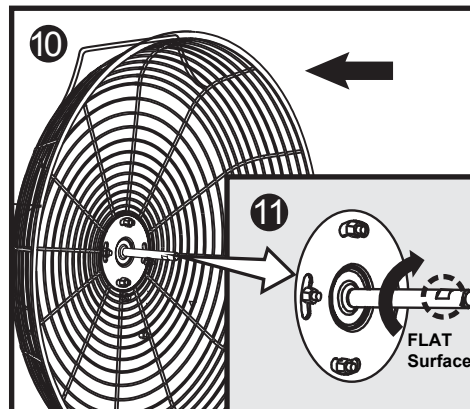


Screw in the **Locking Knob** (Clockwise) and nip up. Do Not overtighten.

STEP 3: INSTALL SAFETY GRILLE AND FAN BLADE

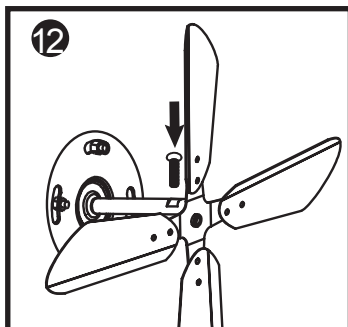


Remove the protective plastic sleeve from the motor spindle shaft and the 4 screws as Identified.



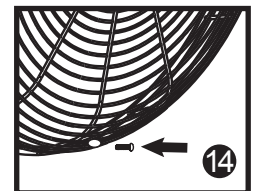
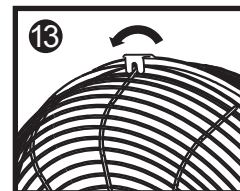
Fit the **Back Safety Grille** into position and refit the 4 screws and tighten. (Note: The handle on the back of the grille should be at the top)

Rotate the motor spindle until the "FLAT" surface is facing up.



Slide and push the **Fan Blade** onto the spindle. Push on until the end of the fan blade hole is aligned with the end of the spindle.

Then fix and tighten the screw. (*Note: Ensure the screw is lined up with the "FLAT".)



Place the **Front Safety Grille** into position and secure it by closing the clips over the outer rim.

Using the **Small Nut and Bolt**, fasten the two grilles together.

If you are missing a part or having troubles when assembling the fan, please feel free to call our friendly customer service team on our toll free number: 1300 105 888 or via email info@hegroup.com.au. We will be glad to assist you.