

TP385

TP Wooden Cubby House

Instructions for assembly, maintenance and safe use.



We constantly strive to improve our assembly instructions. To see the most current version of this instruction for assembly, maintenance and safe use, please visit the product page at tptoys.com



WARNING:
ADULT ASSEMBLY REQUIRED



WARNINGS!

THIS PRODUCT CONTAINS SMALL PARTS AND SHARP POINTS. IT IS NOT SUITABLE FOR CHILDREN UNDER 36 MONTHS UNTIL FULLY ASSEMBLED.

THIS PRODUCT IS INTENDED FOR USE BY CHILDREN FROM AGES 18+ MONTHS.

ONLY FOR DOMESTIC USE. FOR OUTDOOR USE ONLY.

TOY MUST BE ASSEMBLED BY AN ADULT BEFORE USE.

CHILDREN MUST NOT USE THIS PRODUCT UNTIL PROPERLY INSTALLED.

ADULT SUPERVISION REQUIRED.

REMOVE ALL PACKAGING BEFORE GIVING TO YOUR CHILDREN.

RETAIN PACKAGING FOR FUTURE REFERENCE.

PLEASE RETAIN INSTRUCTIONS AS IT CONTAINS IMPORTANT SAFETY INFORMATION.

MAXIMUM USER WEIGHT 30KGS



x2



Build Time



Robovision Ltd t/a TP Toys

Unit 11, Enterprise Way, Flitwick, Bedfordshire, MK45 5BX England

www.tptoys.com

Important advice for assembly, maintenance and safe use.

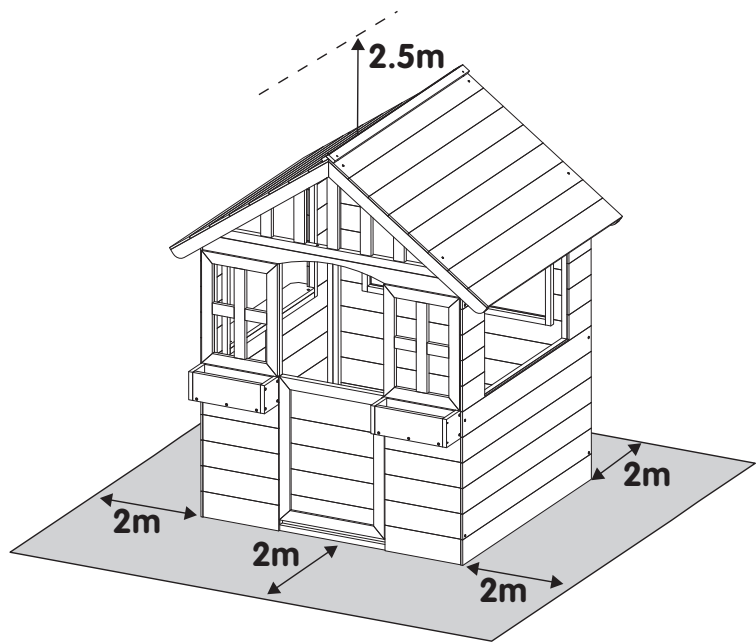
Please retain this information for future reference.

1. Toy must be assembled by an adult before use exactly in accordance with the instructions.
2. Children must not use this product until properly installed.
3. Check all parts are present before you start to assemble the product. Place small parts on a tray or similar to ensure they are not lost. The manufacturing process can very occasionally result in sharp edges/waste material so please take care when assembling this product.
4. If any parts are missing do not use the product until the replacement parts are fitted.
5. Ensure your product is sited on level ground. Failure to do this may put additional stress on connections and joints and in time could cause them to fail.
6. Ensure your product is located on a soft impact surface like grass. Never locate your product on hard surfaces like concrete.
7. Avoid locating this product in full sun.
8. Remove all packaging before giving to your children.
9. Equipment should be checked by an adult at the beginning of each season and at regular intervals during the usage season to ensure it is safe.
10. Pay special attention to all connections and fastenings. Please check regularly all nuts and bolts for tightness and tighten as required.
11. Parts may need to be replaced if they show signs of wear and tear. Replace any defective parts in accordance with these instructions.
12. Due to the natural characteristics of timber, it is vital to check your playframe regularly for splintering, lifting of surface layers of wood or exposure of rough wood. Affected areas must be rubbed down using coarse sandpaper to restore a smooth, safe surface.
13. Any changes to this toy eg changing or adding an accessory, must be done in accordance with our instructions. Failure to do this will render your guarantee null and void and may make your product unsafe.
14. Never place toys near a fire.
15. In high winds, ensure outdoor toys are moved to a sheltered position and/or securely staked down.
16. The age recommendation for this product is clearly stated on the packaging and in these instructions. Please adhere to it at all times. Adult supervision is required at all times to ensure children play safely.
17. When you dispose of this equipment please do so responsibly.

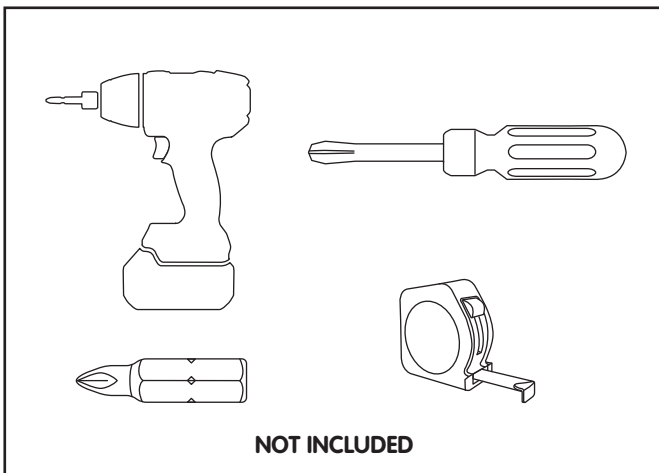
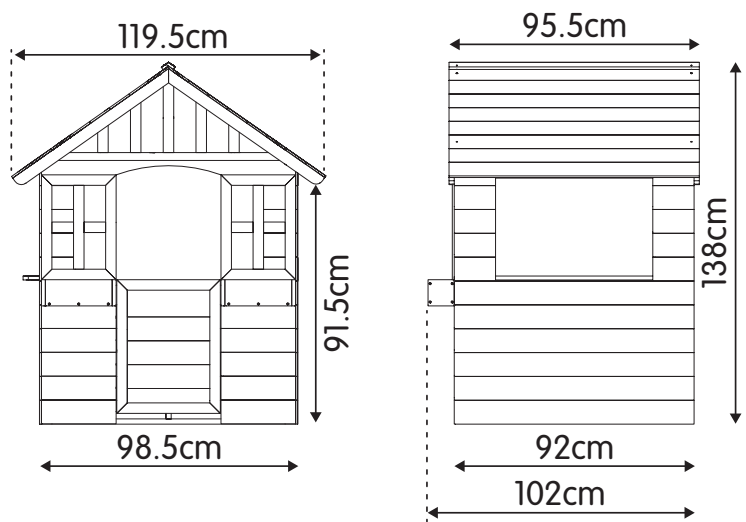
Safe play free space area

The safe play area refers to the zone extending 200cm around the toys on all sides and 250cm above the toy.

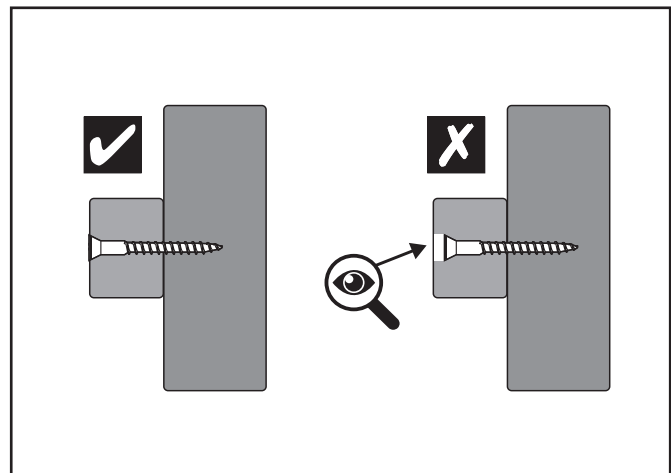
The safe play area must be free from all obstacles.



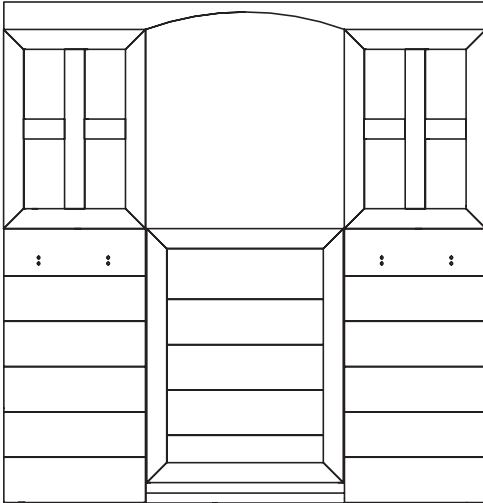
Dimensions



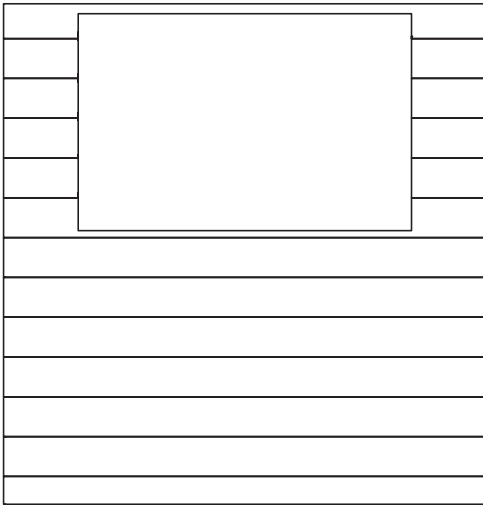
NOT INCLUDED



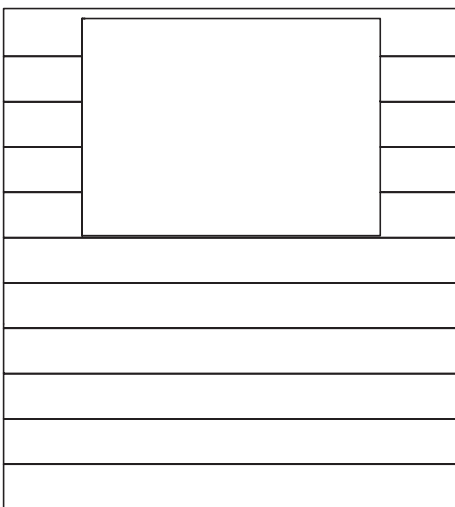
Contents



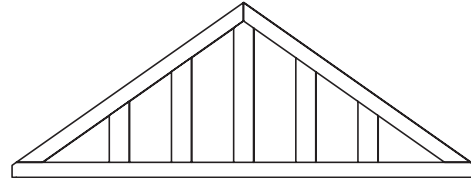
1 WP2005 **x1**



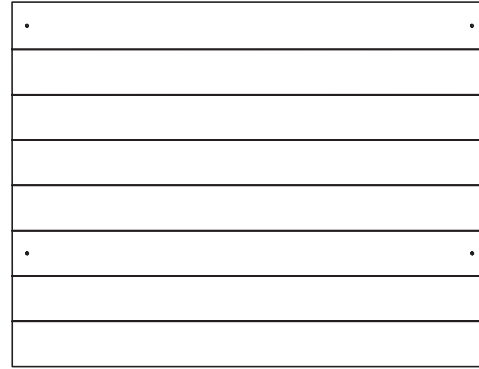
2 WP2006 **x1**



3 WP2007 **x2**



4 WP2008 **x2**



5 WP2009 **x2**



6 MW12718 **x1**



7 MW1271 **x2**




8 MW1272 **x4**




9 MW1273 **x4**



10 MW1274 **x1**

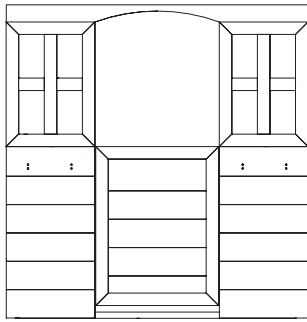
A  FA4523 3.5 x 50mm
Wood screw **x6**

B  FA4541 3 x 30mm
Wood screw **x13**

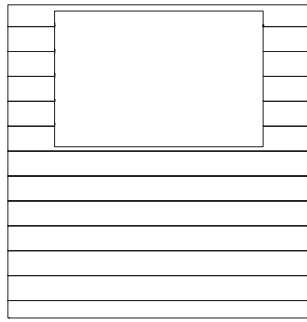
C  FA4542 3 x 20mm
Wood screw **x24**

D  FA4543 3 x 16mm
Wood screw **x8**

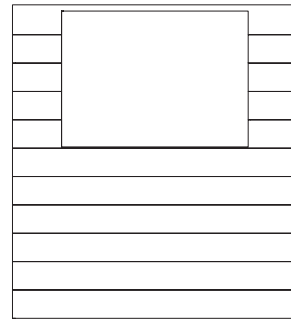
1



1 WP2005 x1



2 WP2006 x1

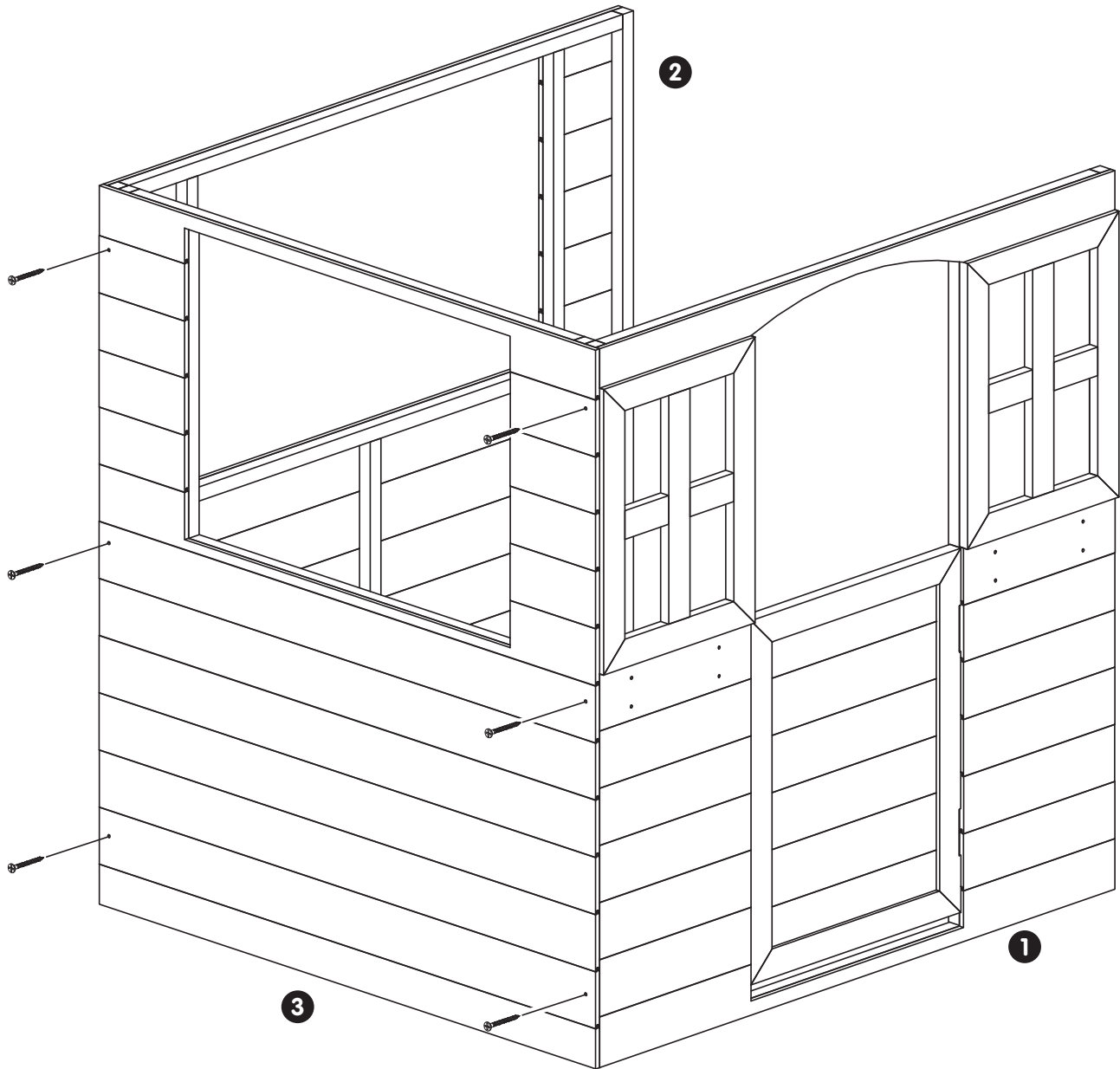


3 WP2007 x1

C

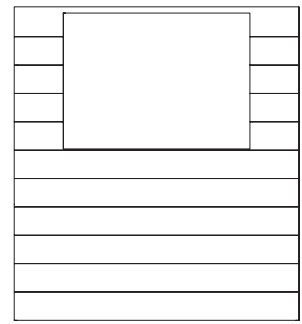
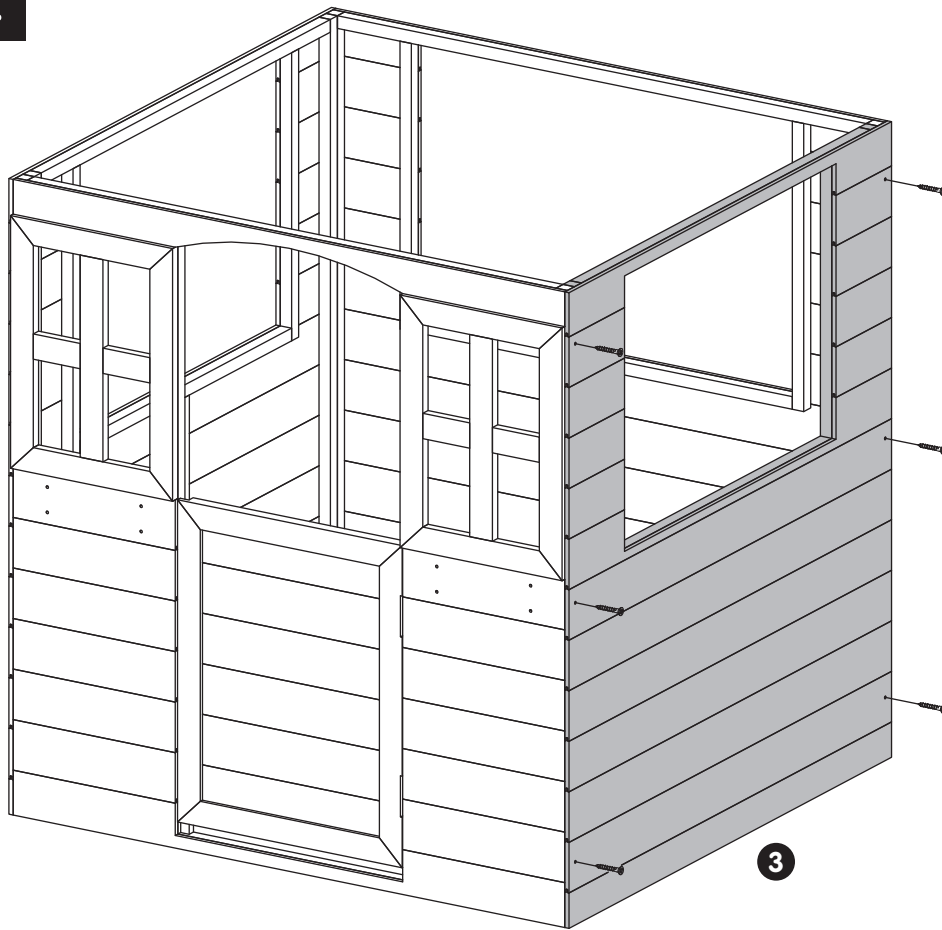


FA4542 3 x 20mm
Wood screw x6




5

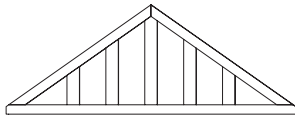
2




3 WP2007 x1

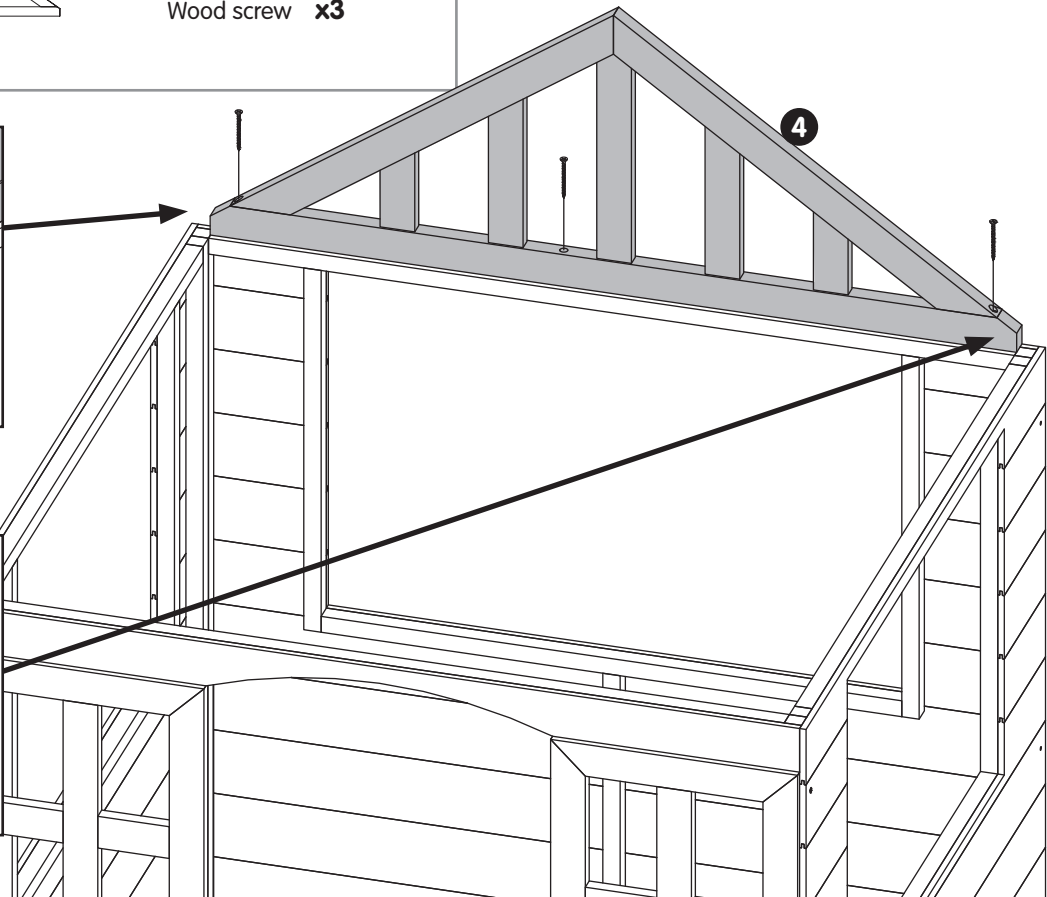
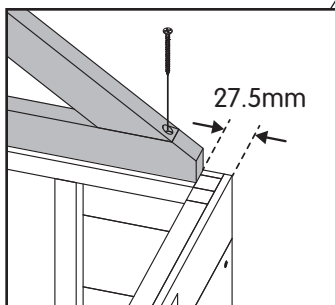
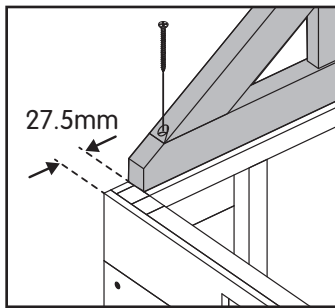
C  FA4542 3 x 20mm
Wood screw x6

3

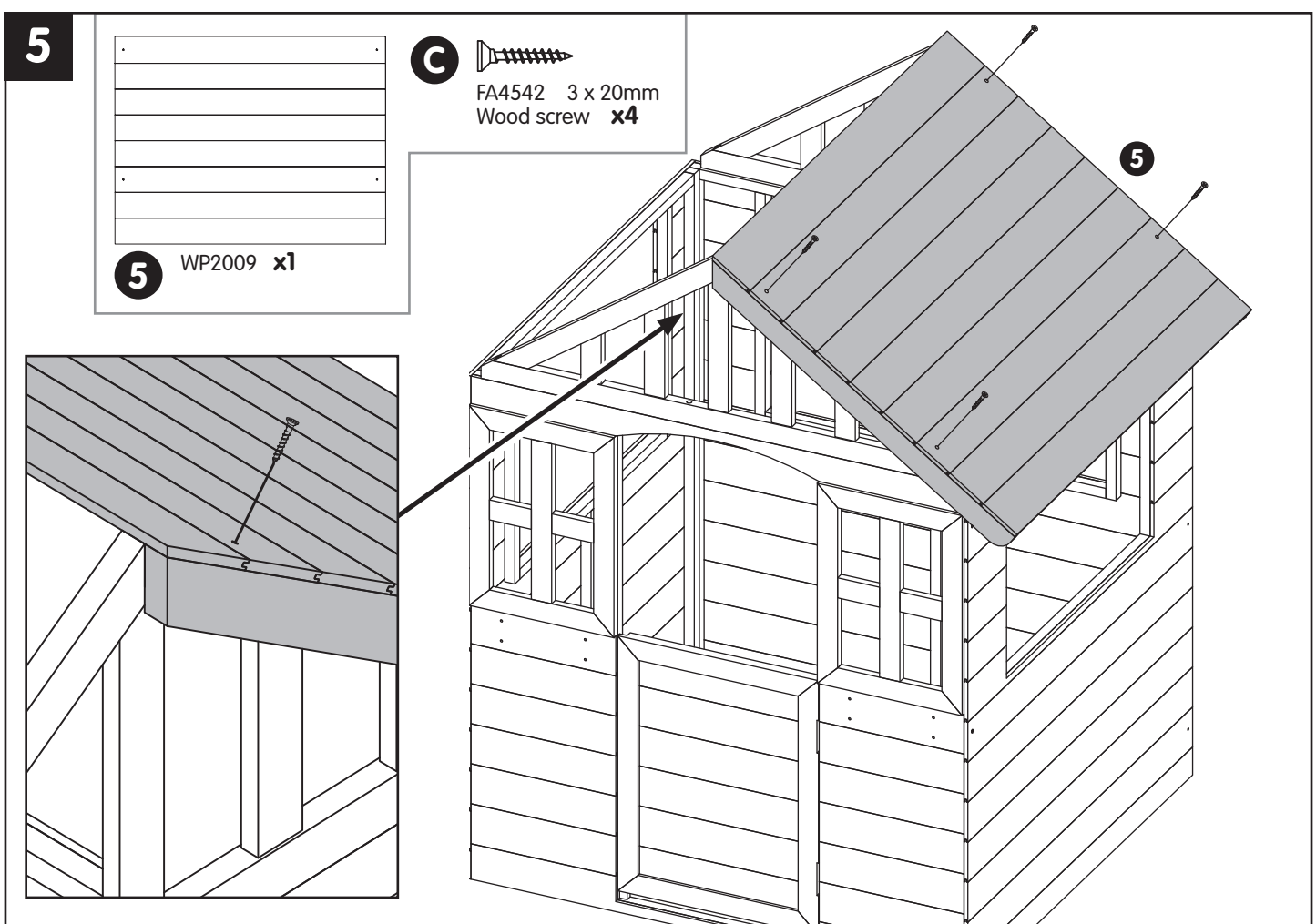
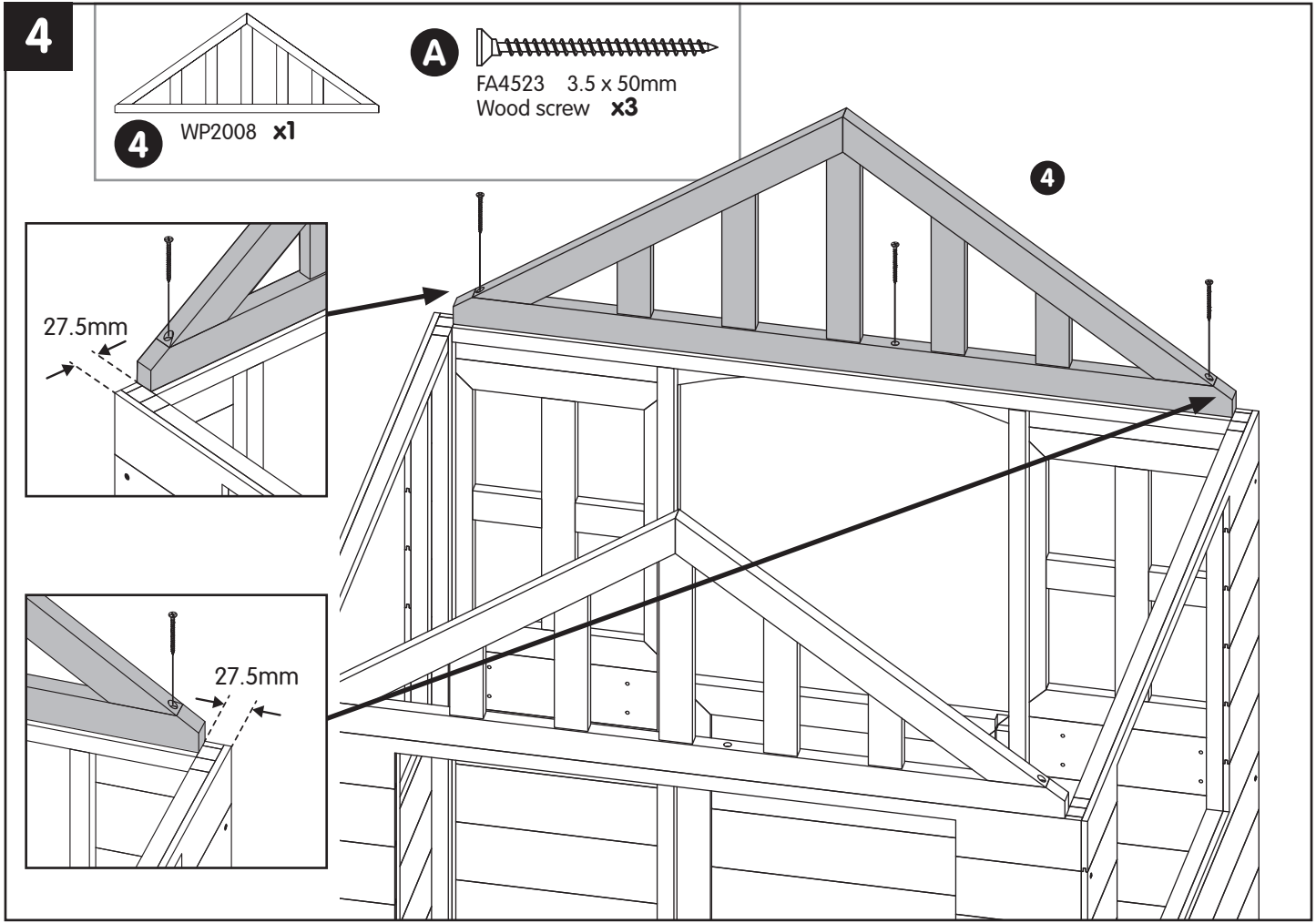


4 WP2008 x1

A  FA4523 3.5 x 50mm
Wood screw x3




6

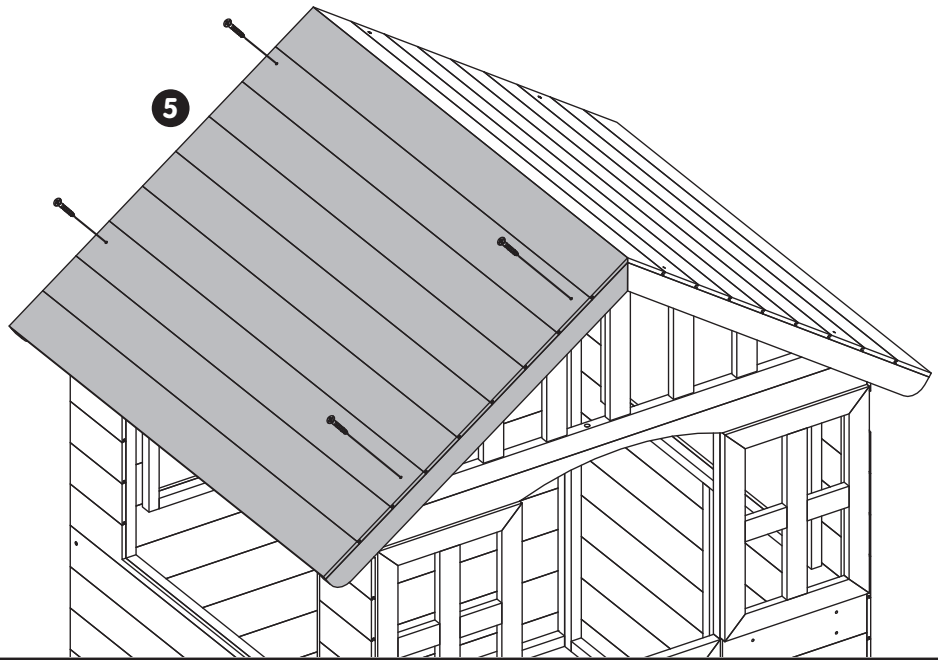


6



5 WP2009 **x1**


C  FA4542 3 x 20mm
Wood screw **x4**

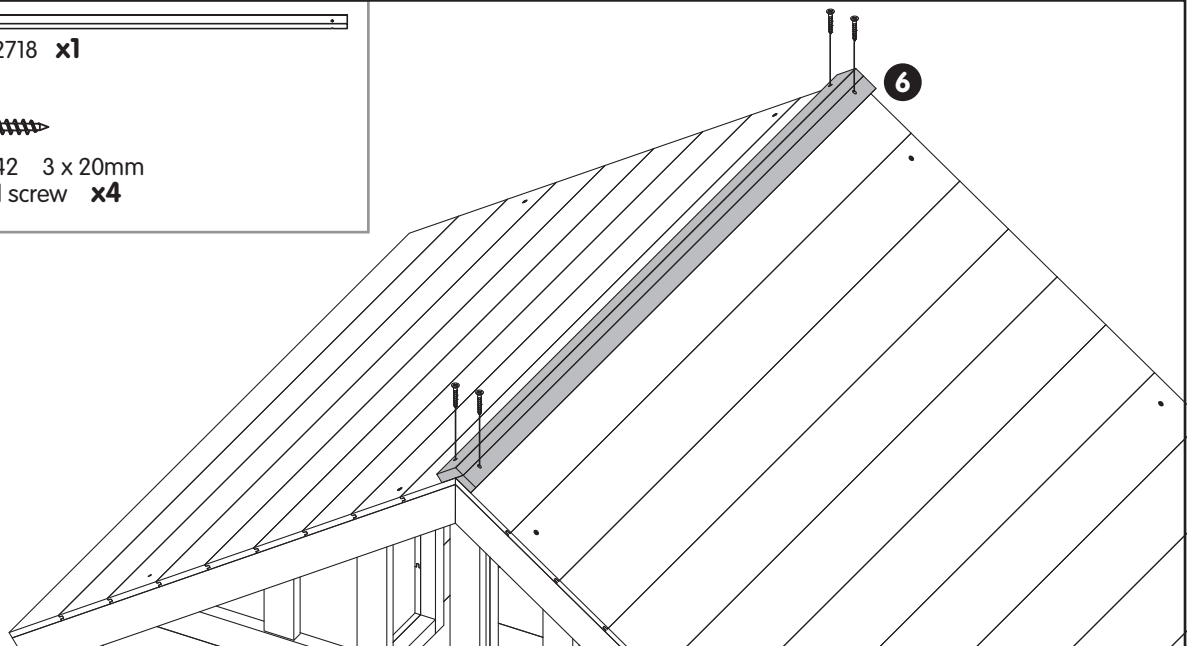


7

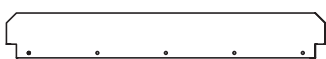


6 MW12718 **x1**


C  FA4542 3 x 20mm
Wood screw **x4**

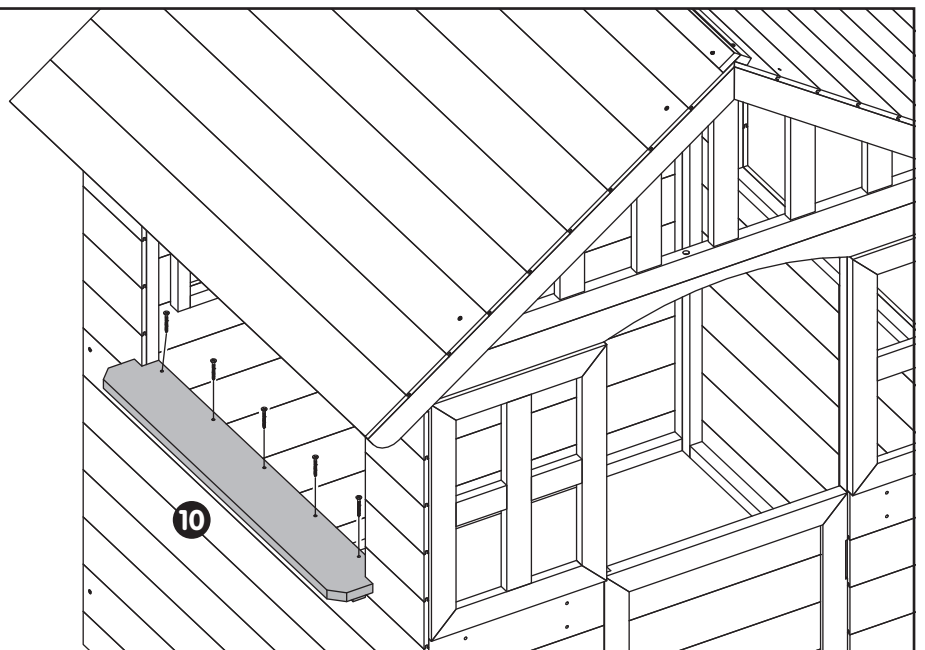


8



10 MW1274 **x1**

B  FA4541 3 x 30mm
Wood screw **x5**



8

9



7 MW1271 x2



8 MW1272 x4

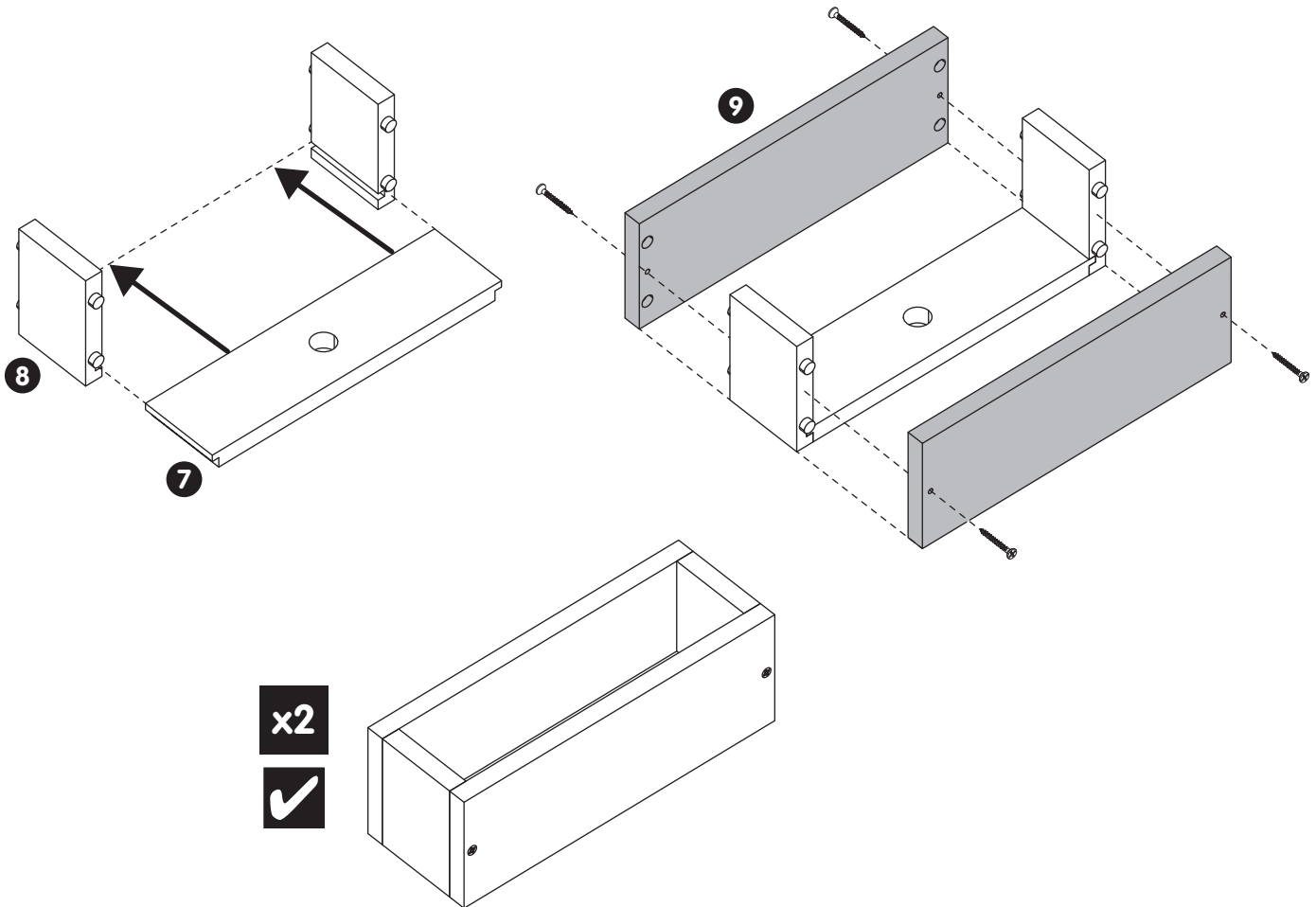


9 MW1273 x4

B



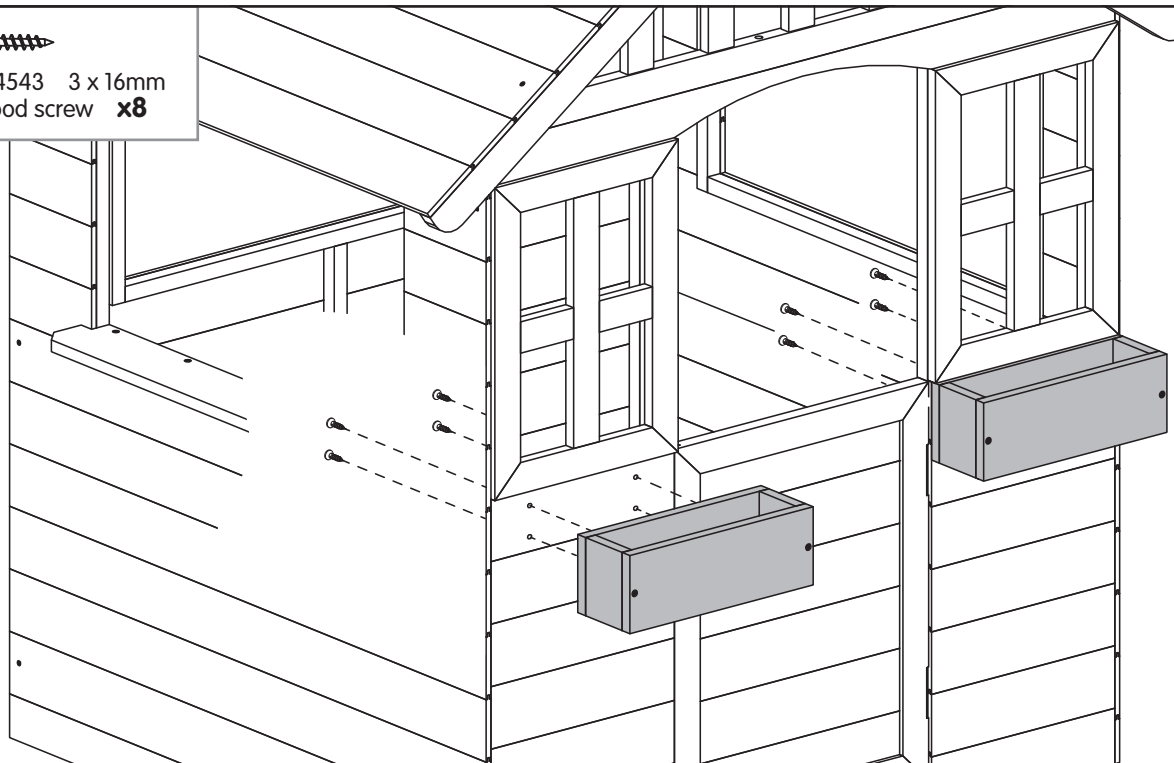
FA4541 3 x 30mm
Wood screw x8



10



FA4543 3 x 16mm
Wood screw x8



9



Thank you

Thank you for purchasing this product.

Please register your new product on line at tptoys.com

www.tptoys.com/customer/productregistration

Find out about the guarantee for this product,

visit **www.tptoys.com/customer/pages/guaranteeinformation**

For customer services and help with your product,

visit **www.tptoys.com/customer/help**

FOR AU / NZ: IMPORTED FOR KMART STORES IN AUSTRALIA AND
NEW ZEALAND.
FOR USA: IMPORTED BY ANKO RETAIL INC.
19500 ALDERWOOD MALL PARKWAY LYNNWOOD WA 98036 USA.

ANKO
MADE IN CHINA
42911128
15/20

Your TP Guarantee Number/Product Batch No is