

anko

Instruction Manual



42959557

Adjustable Gaming Microphone

01 specification

PRODUCT DATE

Height and Width: 150mm/40mm

Sensitivity: $-45 \pm 3\text{dB}$

Output impedance: $< 680 \Omega$

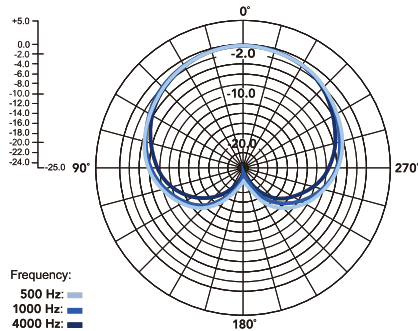
Operation voltage: DC5V, 800mA

Current consumption: $150\mu\text{A} \leq \text{IDDS} \leq 450\mu\text{A}$

S/N ratio: 68dB

Max.Input Sound Pressure Lel: 110dB

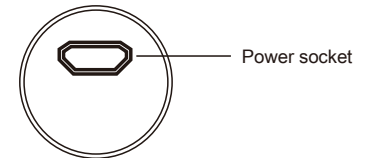
• Polar Response



02 Features



• Microphone setup



Plug one of the USB cable into the power socket in the microphone, and connect the other end to computer. The power indicator light will turn blue if it is working properly.

03 Power requirements

1.The microphone is powered by your device's USB port, meaning that in most instances you can just plug the microphone in and get started right away. For non-standard USB ports, a powered USB hub may be required.

2.It is a "Plug & Play" USB device, supports mac computer, Windows 7/8/10 or later.

04 General operation

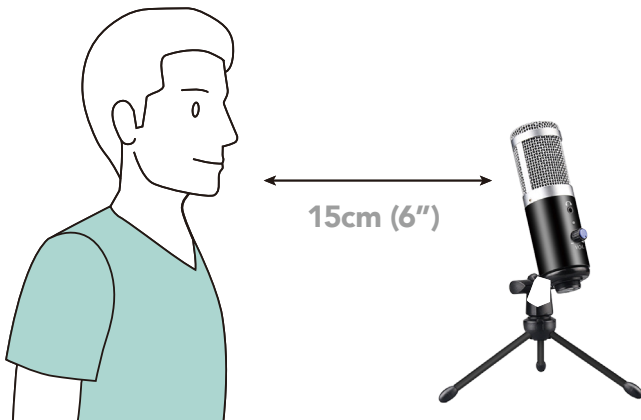


Diagram 4 - Positioning the microphone for vocals

05 General operation

● Microphone placement:

Placement of the microphone and relative to the vocalist may be varied on several factors including room acoustics, the vocal performance, and whether the vocalist has a high or deep voice.

An ideal starting point for the reference is to place microphone directly in front of the lead singer 15 cm (6") distance. Moving the vocalist a little closer will make the vocal sound more intimate and full, while moving the vocalist back will give the vocal a little more 'air' or room sound, and will reduce the proximity effect (increased bass or low frequency response when the sound source is very close).

Experimentation should be made with the angle from which the microphone is addressed, as different results can be achieved when the vocalist is 'off-axis' to the microphone (and the gold dot).

● Setting your input level:

The microphone has been set to an ideal internal gain setting, without the need for physical level adjustments on the microphone body. Any necessary level adjustments to set the ideal recording level can be made from within your recording program, or via your computer's system preferences.

To adjust your input level from within your recording software, refer to the manual provided by the software developer.

06 General operation

To manually adjust your input level via your computer's system preferences, use the following instructions relevant to your device platform/operating system. Connect the other end to computer and check if the power indicator light turn to blue to make sure it works properly.

Adjusting the input level on a Mac OS computer:

1. Click on the Apple symbol at the top left of your screen, and select System Preferences.

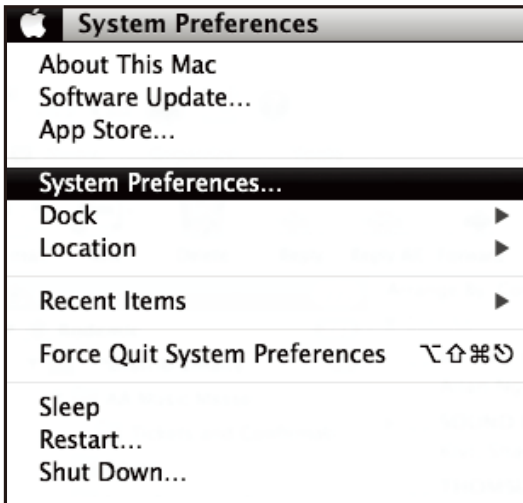


Diagram 6 - Accessing Mac OS System Preferences

07 General operation

2. Click on 'Sound' to open the sound options.



Diagram 7-1 - Opening 'Sound' options

3. Open the 'Input' tab.

4. From here, select the 'STORM' from the list of devices, and adjust the input level using the slider.

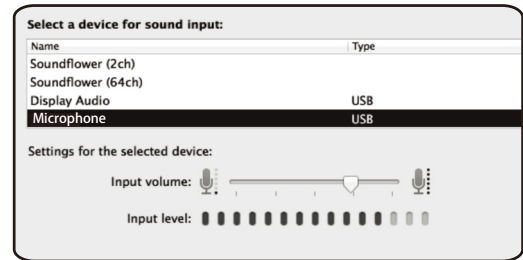


Diagram 7-2 - Adjusting microphone input level

08 General operation

Adjusting the input level on a Windows computer:

1. Open the Start menu and click on 'Control Panel'

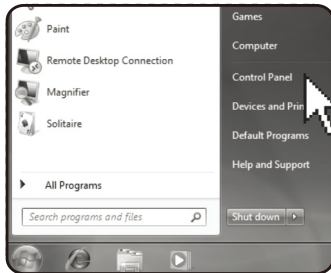


Diagram 8-1 - Accessing Windows Control Panel

2. Open the 'Sound' preferences from within the Control Panel folder.

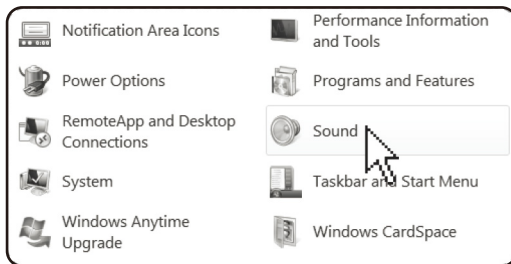


Diagram 8-2 - Opening 'Sound' options

09 General operation

3. Open the 'Recording' tab and double click on 'STORM' from the list of devices.



Diagram 9-1 - Selecting the microphone input device

4. Adjust the input level using the slider.

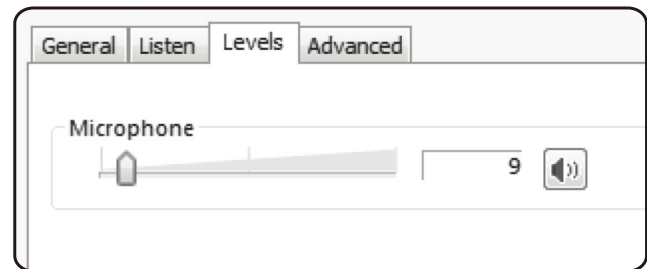


Diagram 9-2 - Selecting the microphone input device

10 General operation

Right click to open the sound panel

5. Choose Open Sound settings.

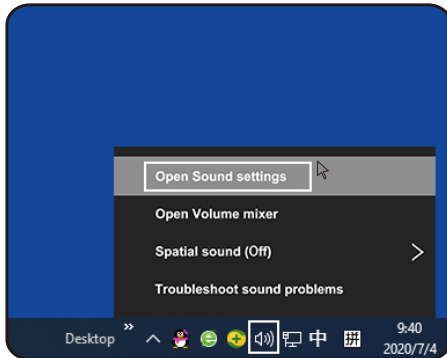


Figure 10-1-Choose Open Sound settings.

6. Select the "Microphone" option in the category.

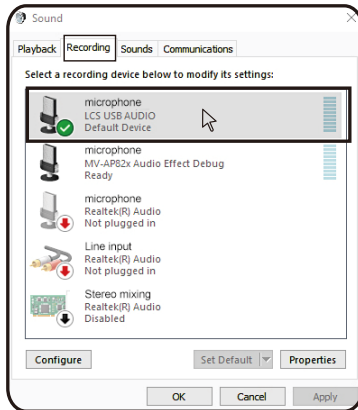


Figure 10-2-Select the "Microphone" option in "Sound"

11 General operation

7. Open listening from Microphone Properties.

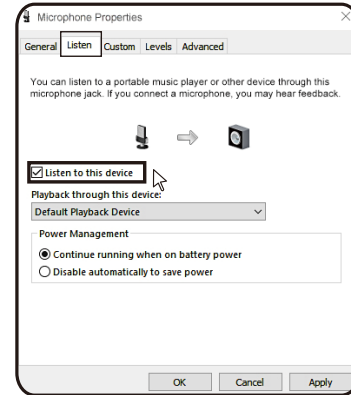


Diagram 11-1- Tick to listen to this device

12 NOTE

1. Do not cover the microphone grille with your hand.
2. Regular maintenance is recommended to avoid electricity erratic and acoustic problems.
3. Do not disassemble or throw into fire or water, to avoid damage.
4. Wipe with a dry or slightly damp cloth.
5. To take care of the children, to ensure that they do not play the microphone as a toy.