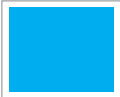




Anko
Styleguide
Artwork

NON PRINTING



DIELINE



GRID
UNITS

PRINT FINISH:
MATT VARNISH

ALL COLOURS
PRINT



BLACK

DATE: 07.OCT.2020

PRODUCT CODE: 42-964-308 (Sound & Light)

FILE NAME: TUNNEL PLAY MAT

STYLEGUIDE: ANKO-BABY

LOCATION & OPERATOR: HK/KENNETH SO

FRONT
10.5cm

BACK
10.5cm

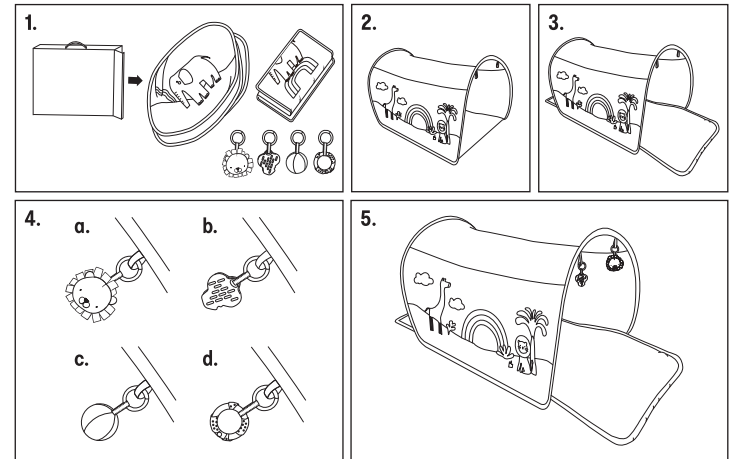
anko

Tunnel Play Mat Instruction Manual

3+
months



IMAGES / DRAWINGS ARE FOR VISUAL PURPOSES ONLY. ACTUAL PRODUCT MAY VARY SLIGHTLY.
THE MANUFACTURER RESERVES THE RIGHT TO CHANGE ANY SPECIFICATION OR FEATURE WITHOUT PRIOR NOTICE.



WARNING!

- › TO PREVENT ENTANGLEMENT INJURY, NEVER PLACE THE PLAY MAT IN A CRIB OR PLAYPEN. USE ONLY ON A FLAT, HORIZONTAL FLOOR. NEVER ADD ADDITIONAL STRINGS, STRAPS OR OTHER PRODUCTS TO THE PLAY MAT.
- › TO ENSURE YOUR CHILD'S SAFETY, THIS PRODUCT MUST BE ASSEMBLED BY AN ADULT.

IMPORTANT!

- › TO ENSURE YOUR CHILD'S SAFETY, PLEASE FOLLOW THE BELOW INSTRUCTIONS CAREFULLY AND ENSURE THE FINAL ASSEMBLY IS CORRECT. CHECK FREQUENTLY.
- › PRODUCT MUST BE USED UNDER ADULT SUPERVISION.
- › INSPECT THE PLAY MAT BEFORE EACH USE.
- › PRODUCT IS DESIGNED FOR BABIES THAT ARE NOT ABLE TO STAND OR WALK UNAIDED.
- › REMOVE ACTIVITY ARCHES WHEN BABY BEGINS TO PUSH UP ON HANDS AND KNEES.
- › NEVER LEAVE THE CHILD UNATTENDED.
- › BABIES SHOULD NOT BE ALLOWED TO SLEEP UNSUPERVISED WHILE LAYING ON THIS PLAY MAT.
- › DO NOT LIFT OR ATTEMPT TO MOVE PLAY MAT WITH BABY ON IT.
- › DO NOT USE THIS PRODUCT AS A BLANKET.
- › KEEP AWAY FROM FIRE AND HEAT SOURCES.

CAUTION!

- › THE ACTIVITY ARCHES ARE UNDER TENSION. TO AVOID INJURY, GRASP FIRMLY AND RELEASE THE TENSION SLOWLY.
- › CARE SHOULD BE TAKEN IN UNPACKING AND ASSEMBLY.

CARE INSTRUCTIONS:

- › SURFACE WASH WITH A CLEAN, DAMP SPONGE OR CLOTH.
- › AIR DRY ONLY.
- › DO NOT IMMERSE IN WATER.

MADE IN CHINA

FOR AU / NZ: IMPORTED FOR K MART
STORES IN AUSTRALIA AND NEW ZEALAND.

KEYCODE: 42-964-308

14.8cm

14.8cm