

# anko

## USER MANUAL



### 42967217

### DIGITAL DOOR VIEWER

#### Caution :

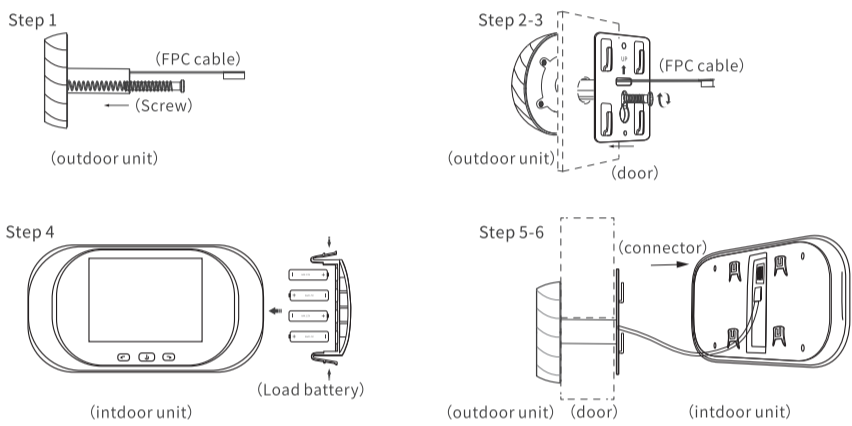
Please read user manual before using the product. Please keep this manual for future reference.

Warning:

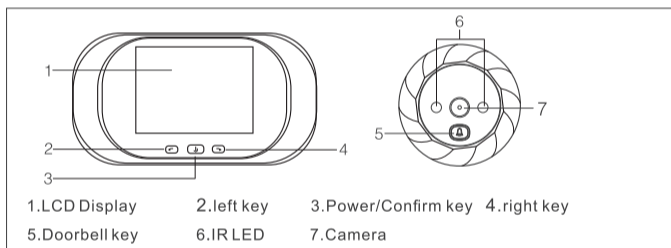
1. Please do not dismantle the device.
2. Do not use this product in high temperature/humidity/salty environment.
3. Do not bend the cable.
4. Please use alkaline 1.5V AAA battery.

#### Installation Instructions

- Step 1: Choose a suitable screw according to the door thickness, put the screw into the hole in the barrel of outdoor unit.
- Step 2: Insert the barrel together with the FPC cable through the door peephole, then hold the outdoor part on the door.
- Step 3: Take out the metal bracket (the "up" arrow on the bracket means upward) pass the FPC cable through the rectangular hole, screw the metal bracket into outdoor part tightly.
- Step 4: Connect the FPC cable from outdoor unit to the connector of the indoor unit.
- Step 5: The four slots on the back of indoor unit are aligned with four hooks on the metal bracket and buckle up, then pull down indoor unit to lock tightly.



#### OPERATION



1. Power on/off: Press "doorbell key" or "power key" the indoor part will turn on and ring. Press "power key" for 3 seconds, the device will turn off.
2. Take photo: Press "doorbell key", the device will turn on and take photo; in power on mode, pressing "power key" it will take photo too.
3. Review photo: in power on mode, press "left key" or "right key" to review photos.
4. Delete photos: in power on mode or when reviewing photos choice one certain photo, press "right key" for three seconds to delete it. Press "left key" for three seconds to delete all photos.
5. Set power off time: In power on mode, press "right key" for three seconds to select the power off time: 15s/25s/off.

#### Technical Specifications

LCD screen	2.8 inch	Material	ABS plastic
Resolution	320*240	Vision angle	90
Memory	Built-in cyclic storage in device	Product Size	Indoor part: 127*68*13mm Outdoor part: 58*13mm
Battery	1.5V AAAX4	Door hole Diameter	14-22mm
Camera	0.3 MP	Door thickness	35- 120mm
IR LEDS	2 PCS,850nm	Tempera true	-20°C – 55°C

#### Products Accessories

- Metal Bracket\*1
- User manual\*1
- Screws\*3

#### 12 Month Warranty

Thank you for your purchase from Kmart.

Kmart Australia Ltd warrants your new product to be free from defects in materials and workmanship for the period stated above, from the date of purchase, provided that the product is used in accordance with accompanying recommendations or instructions where provided. This warranty is in addition to your rights under the Australian Consumer Law.

Kmart will provide you with your choice of a refund, repair or exchange (where possible) for this product if it becomes defective within the warranty period. Kmart will bear the reasonable expense of claiming the warranty. This warranty will no longer apply where the defect is a result of alteration, accident, misuse, abuse or neglect.

Please retain your receipt as proof of purchase and contact our Customer Service Centre on 1800 124 125 (Australia) or 0800 945 995 (New Zealand) or alternatively, via Customer Help at Kmart.com.au for any difficulties with your product. Warranty claims and claims for expense incurred in returning this product can be addressed to our Customer Service Centre at 690 Springvale Rd, Mulgrave Vic 3170. Our goods come with guarantees that cannot be excluded under the Australian Consumer Law. You are entitled to a replacement or refund for a major failure and compensation for any other reasonably foreseeable loss or damage. You are also entitled to have the goods repaired or replaced if the goods fail to be of acceptable quality and the failure does not amount to a major failure.

For New Zealand customers, this warranty is in addition to statutory rights observed under New Zealand legislation.