

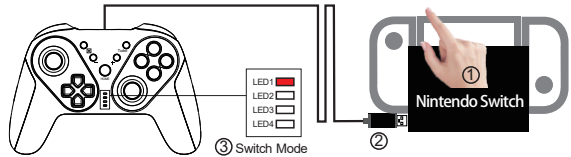
# anko

## Instruction Manual

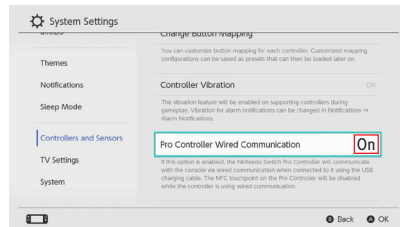
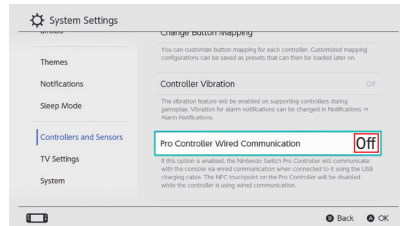


42967248  
Wired Gaming Controller For Switch

### Switch Gamepad Mode Connect For Nintendo Switch Console



- 1: Press the POWER to wake-up the Nintendo Switch gaming console;
- 2: Connect gamepad to USB port on Nintendo Switch game console charging dock, the LED1,2,3,4 flashes together waiting for paring.
- 3: After Nintendo Switch console recognized the controller and connect well, the LED1 will be long light.
- 4: If LED light is still off after go through all the above steps, try to open Pro Controller Wired Communication in setting.



### Vibration Adjustment Only For Nintendo Switch Console

There are 3 levels of vibration intensity: weak, moderate and strong.

**Step 1:** Please make sure you connect the controller to the Nintendo Switch console well.

**Step 2:** Press 4 buttons (L,ZL,R and ZR) simultaneously for 5 seconds.

**Step 3:** Then release the 4 buttons when you feel the vibration.

The vibration mode can be adjusted by repeating the above operators.

### Turbo Function & Speed Adjustment



Turbo Set

Buttons can be set to the turbo speed ( which is called for short function buttons): A/B/X/Y/L/ZL/R/ZR button

**Enable / Disable the turbo function:**

Step 1: Press the Turbo button and one the function button simultaneously , to enable the Turbo speed function.  
Step 2: Repeat the step 1, to disable the Turbo speed function.

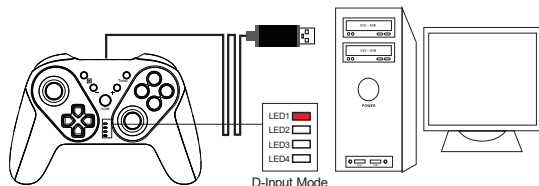


Turbo Speed Adjustment

**Adjust Turbo speed :**

Press the Turbo button simultaneously the directional button Up / Right / Down,  
Directional button UP is the mostly fast speed.  
Directional button Right is the middle speed.  
Directional button Down is the slowly speed.

### D-Input Mode Connect For Windows XP/7/8/10 System



Connect gamepad to PC computer, after the system recognize the game controller, then you can use the game controller to play games.

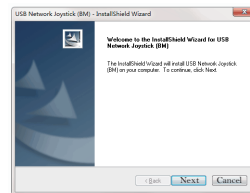
If you want to have vibration during playing games, please visit below to download and install the software.

<http://www.intraindustry.com/downloads.html>

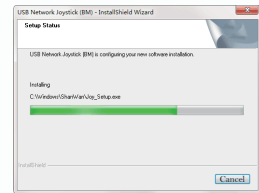


### Driver Install

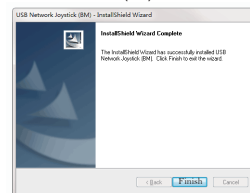
#### 42967248 Wired Gaming Controller For Switch Setup.exe



( 1st )



( 2nd )



( 3rd )

Get the " 42967248 Wired Gaming Controller For Switch Setup.exe" software, follow the steps to finish the driver install.