

Assembly Instruction

42976097 KIDS ROUND TABLE

Please read instructions carefully. Be sure you have all parts before you begin to assemble. Assemble furniture on a clean, flat surface such as carpet to avoid any abrasion.

Tools required: Hex Key (included).

Care instruction:

Wipe clean with a soft damp or dry cloth. Do not use abrasive cleaners.

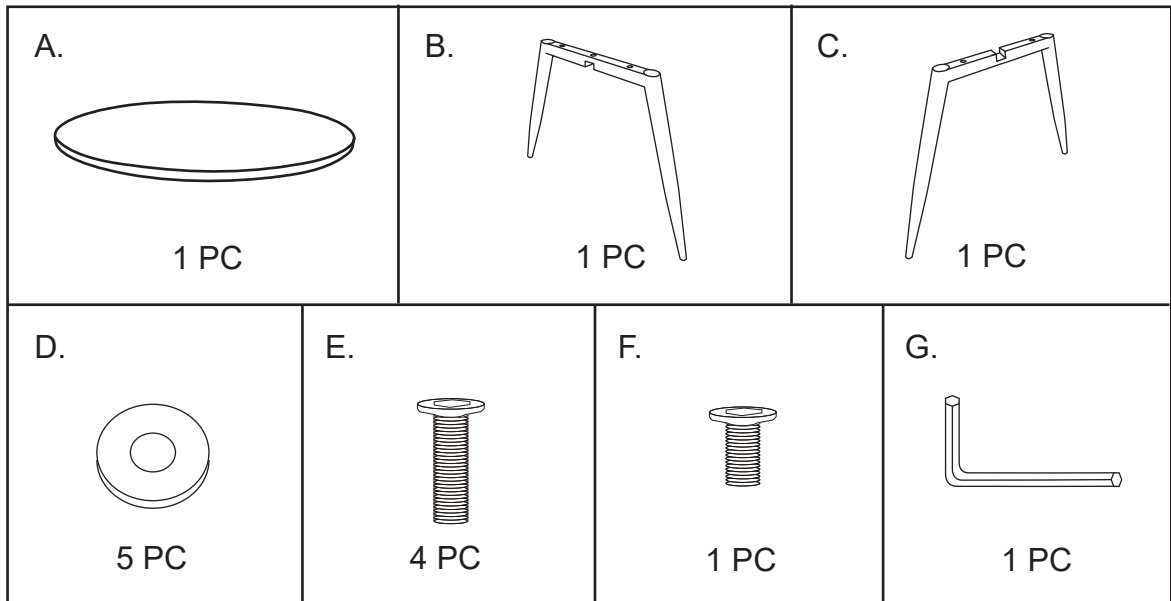
Warning:

Max. safe loading: 15kgs.

Choking hazard – small parts.

Not for children under 3 years.

Parts:



1. Fix legs (B & C) together with the washer (D) and screws (F) using the hex key (G) to tighten the screws.

2. Attach the legs on the table board (A) with the washer (D) and screws (E) using the hex key (G) to tighten the screws.

