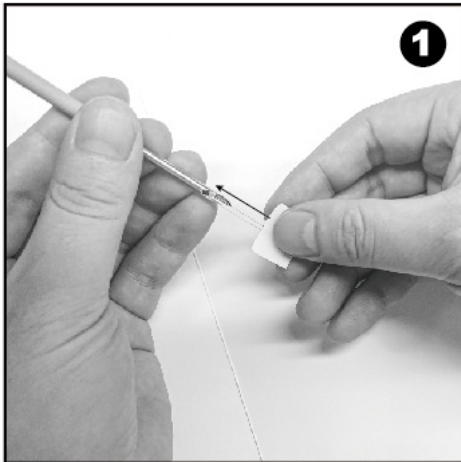
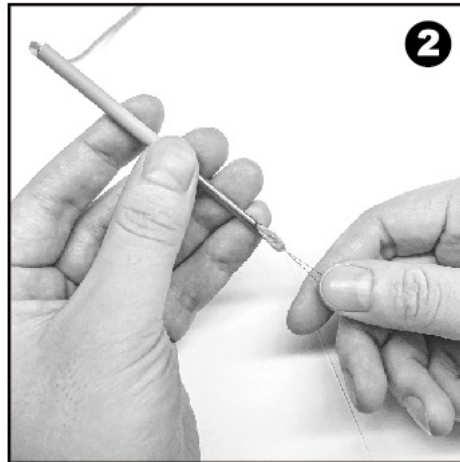


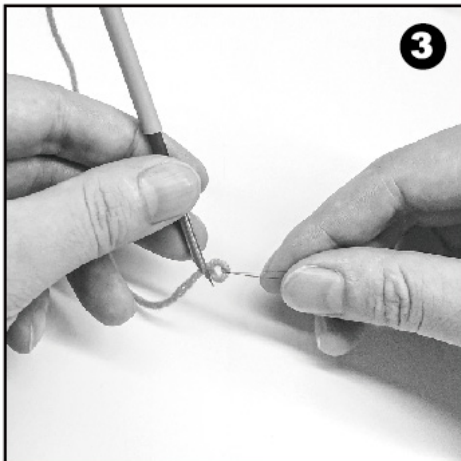
# Punch Needle Instructions



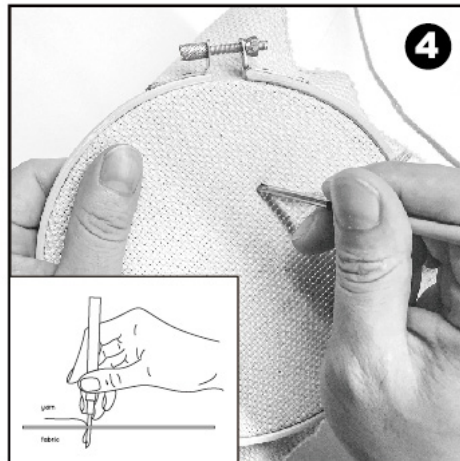
1 Insert the threader from the needle tip to needle top.



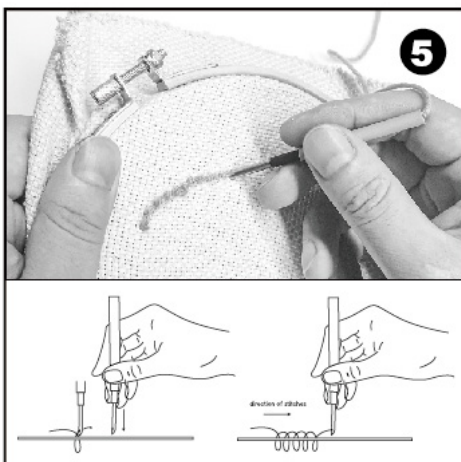
2 Place the end of the yarn into the threader and pull the threader back out of the needle tip.



3 Insert the threader through the hole of the needle tip and place the end of the yarn into the threader and pull back out of the hole. Remove the yarn from the threader. Threading is completed.



4 The Punch needle should penetrate all the way through the fabric, so that the grip of the needle touches the fabric. The needle must be pushed all the way in on each stitch, to create an even look.



5 Lift needle out of fabric, just enough to move onto next stitch. Keep the needle as close to the fabric as possible. Lifting the needle too high shortens the loops on the front of the design and creates unwanted loops on the back.