

anko

User Manual

WIFI STRING LIGHTS



42997610

GOOGLE IS A TRADEMARK OF GOOGLE LLC.

AMAZON, ALEXA AND ALL RELATED LOGOS ARE TRADEMARKS OF AMAZON.COM, INC. OR ITS

AFFILIATES

Please take a minute to read the below information on setting up this device.

The smart string lights can work with both Amazon Alexa and Google Assistant.

After the smart string lights has been installed it will need to be paired with an APP

“Tuya Smart” downloadable from Google Play or the Apple store. Once the Tuya

Smart APP is installed it will then need to be linked with either Amazon Alexa or

Google Assistant account to activate the voice control function.

This user manual consists of three parts. Part one is fundamental set-up, part two and three

are alternative device set ups. If you use Amazon Alexa for voice control, please follow

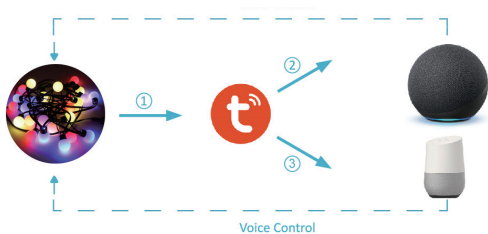
instructions on part one and two. If you use Google Assistant for voice control, please skip part

two, follow the instructions on part one and three.

Part One: Pairing the smart string lights to “Tuya Smart” App

Part Two: Controlling the smart string lights with Amazon Alexa

Part Three: Controlling the smart string lights with Google Assistant



Specification

AC output: 5V 1A

Input: 1000V-240V, 50/60HZ, 5W MAX

Color: LED changeable

Dimension: 1st blub to last blub: 5.5 meters,

26pcs light balls

Power cord: 4.8 meters

power bottom



Cautions:

1. Uncoil the Power cord before use.
2. The external flexible cable or cord of this luminaire cannot be replaced; if the cord is damaged, the luminaire shall be destroyed.
2. The light source of this luminaire is not replaceable; when the light source reaches its end of life the whole luminaire shall be replaced.
3. To satisfy RF exposure requirements, a separation distance of 20 cm or more should be maintained between this device and persons during device operation. To ensure compliance, operations at closer than this distance is not recommended. The antenna used for this transmitter must not be co-located in conjunction with any other antenna or transmitter.

Notes:

The smart string lights can work without APP. Just press the bottom on control box to change the color mode.

Part One – How to pair the smart string lights to Tuya Smart App?

Install the Tuya Smart to control the smart string lights.

Please download and install the app by:

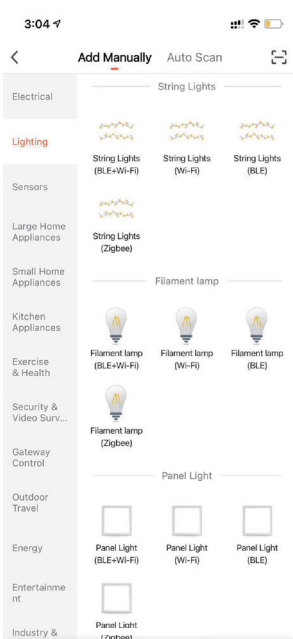
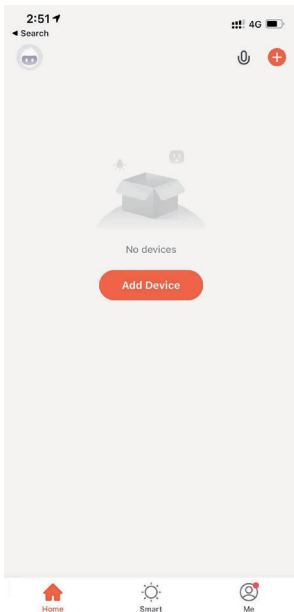
1. Scanning below QR code OR Search “Tuya Smart” in Apple Store or Google Play. Create an account on Tuya Smart and login.



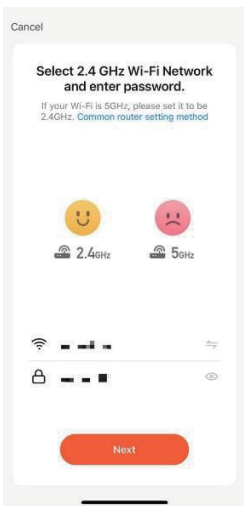
Note: You will need to enter these account details for Alexa or Google Assistant App pairing later.

2. Add the smart string lights to Tuya Smart App
3. **The smart Wi-Fi devices only supports 2.4GHz. Make sure your mobile device connected to your home 2.4Ghz WiFi network. Please refer to your WiFi router setup guide.**
4. Press and hold the power button for 5 seconds, the bulbs will flash in red color 2 times per second, this will then enter Quick Connection Mode.

5. Tap “+” button on top right corner to add device, then tap “string lights (Wi-Fi)” to enter.



6. Enter your WIFI name and password in then tap "Next"



7. Please make sure the smart string lights is standby. (The blubs in red color and flash is 2 times per seconds) .
 8. Tap "next" button and wait till it is successfully connected. Give a name to the device
- A simple name is recommended for easier voice recognition with Alexa or Google Assistant.
 - The name given to the device will be the same for voice control on Alexa or Google Assistant. For example, the device is named "Smart string lights" on this user manual
 - The named device will be shown on the app homepage. Now you can control the smart

String lights with Tuya Smart on the setting page.

3:42 ↻



Done

Added.



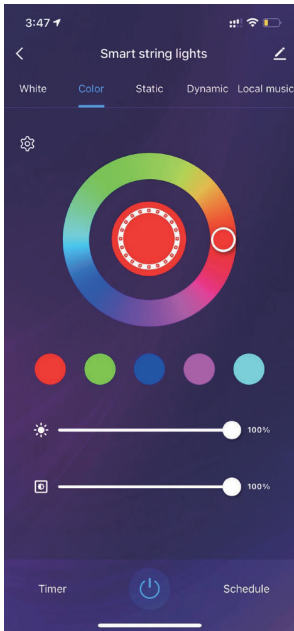
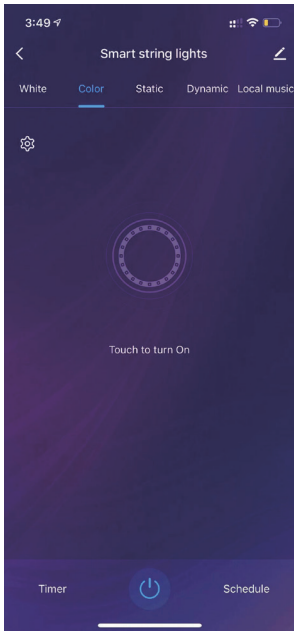
Smart string lights ↗

Device added successfully

How to Control the smart string lights by Tuya Smart App

Turn on /off the lights by touch the on/off bottom

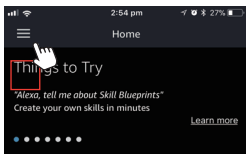
DIY lights color/mode



Part Two- How to control the smart string lights with Amazon Alexa.

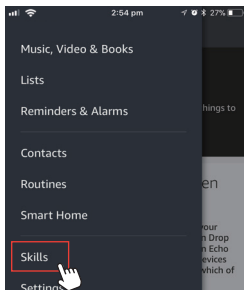
Please make sure that your Alexa app is connected to Echo, and both work well under your WIFI network.

Step A: Log in your Alexa App, tap top left corner, and tap "skills"

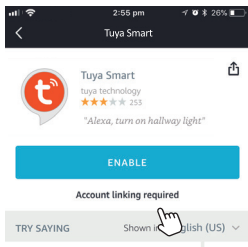
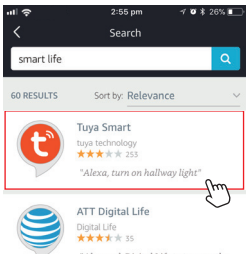


Your Alexa settings have been updated

Household Drop In was enabled from one of your Echo devices or from the Alexa app. The opt-in Drop In feature lets you automatically connect to an Echo device for a voice or a video chat. Your Echo devices with a screen and the Alexa app will indicate which of your other devices are recently active.



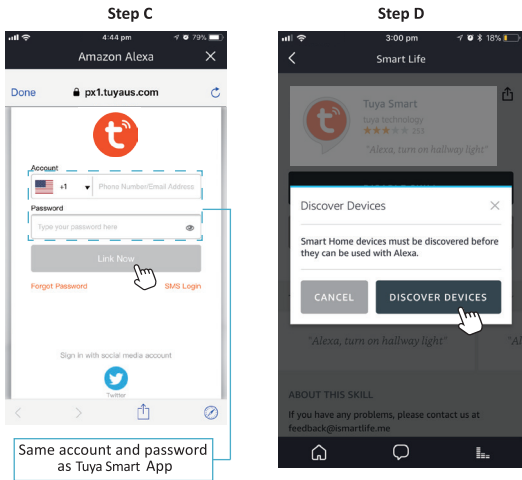
Step B: Type "Tuya Smart", find "Tuya Smart" from the search result, and tap it to enable the skill.



Step C: Enter your Tuya Smart App account and password. Tap "Link now", then tap

“Authorize” on the next page to bind Tuya Smart account to Alexa.

Step D: When your Tuya Smart account is bound to Alexa, tap “DISCOVER” to detect the smart string lights.



Step E: When the named smart string lights is paired to Alexa from Tuya Smart, it will show on the device page (see the “smart string lights” example).

Step F: Now you can control the smart string lights with Alexa App on the setting page.

Step G: You can also voice control the smart string lights with Alexa by giving voice commands:

“Alexa, turn on “device name”, “Alexa, set ‘device name’ to ‘number’. Device name is the one you give to the smart string lights. The device is named “smart string lights” in this user guide.

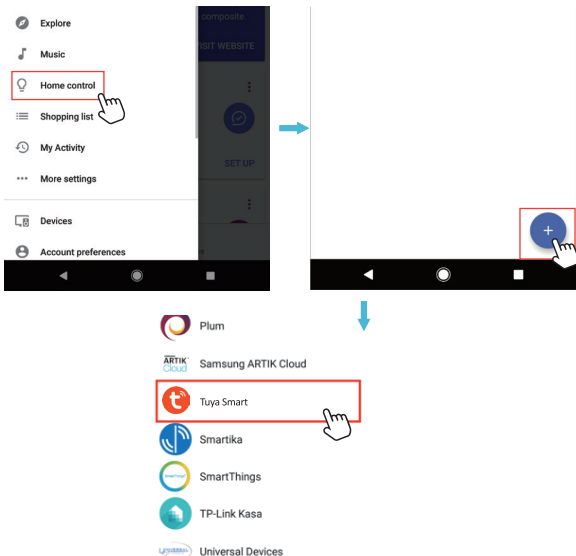
For example, “Alexa, turn on ‘smart string lights’”

Part Three-How to control the smart string lights with Google Assistant.

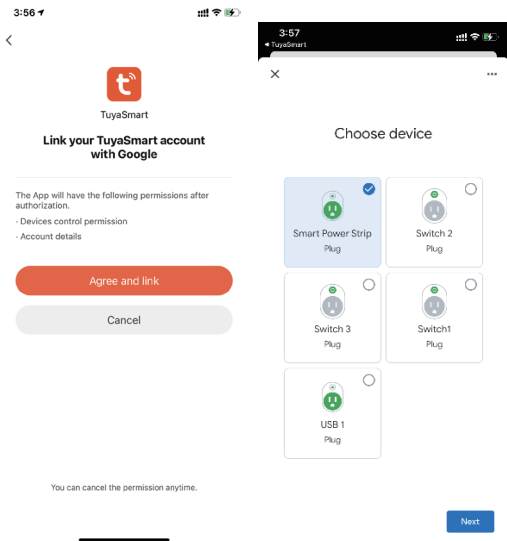
Step A: Login Google Assistant App, tap “Home Control” on the left side bar page.

Step B: Tap “+” button on the bottom right to enter next page.

Step C: Find “Tuya Smart” from side bar list.



Step D: Enter your “Tuya Smart” App account and password to bind Tuya Smart account to Google Assistant. You will find the named smart string lights on Google Assistant App.



Step E: You could voice control it by giving voice commands: “Alexa, turn on ‘device name’”, “Alexa, set ‘device name’ to ‘number’”. Device name is the one you give to the smart string lights. The smart string lights is named “smart string lights” in this user guide. For example, “Alexa, turn on “smart string lights””.

12 Month Warranty

Thank you for your purchase from Kmart.

Kmart Australia Ltd warrants your new product to be free from defects in materials and workmanship for the period stated above, from the date of purchase, provided that the product is used in accordance with accompanying recommendations or instructions where provided. This warranty is in addition to your rights under the Australian Consumer Law. Kmart will provide you with your choice of a refund, repair or exchange (where possible) for this product if it becomes defective within the warranty period. Kmart will bear the reasonable expense of claiming the warranty. This warranty will no longer apply where the defect is a result of alteration, accident, misuse, abuse or neglect.

Please retain your receipt as proof of purchase and contact our Customer Service Centre on 1800 124 125 (Australia) or 0800 945 995 (New Zealand) or alternatively, via Customer Help at Kmart.com.au for any difficulties with your product. Warranty claims and claims for expense incurred in returning this product can be addressed to our Customer Service Centre at 690 Springvale Rd, Mulgrave Vic 3170.

Our goods come with guarantees that cannot be excluded under the Australian Consumer Law. You are entitled to a replacement or refund for a major failure and compensation for any other reasonably foreseeable loss or damage. You are also entitled to have the goods repaired or replaced if the goods fail to be of acceptable quality and the failure does not amount to a major failure.

For New Zealand customers, this warranty is in addition to statutory rights observed under New Zealand legislation.