

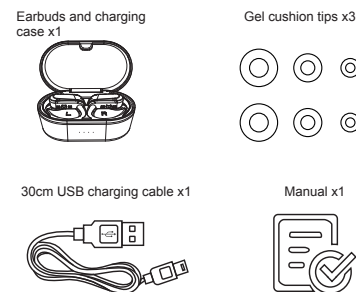
19TW26 75x50mm

anko
True Wireless Earbud

Model: 19TW26
43007639

PRODUCT GUIDE

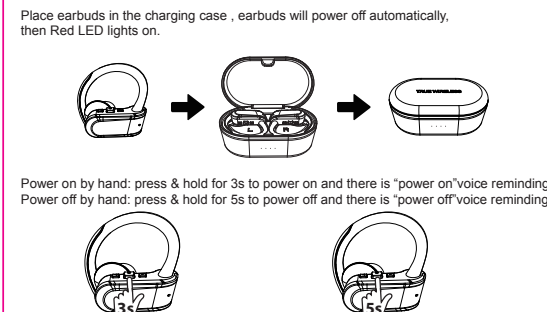
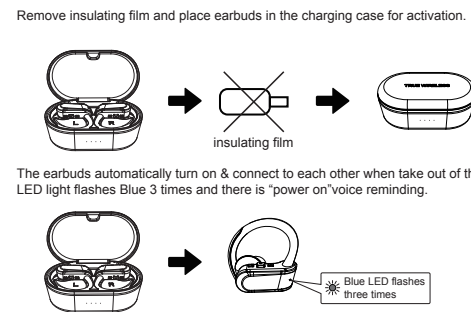
what's in box



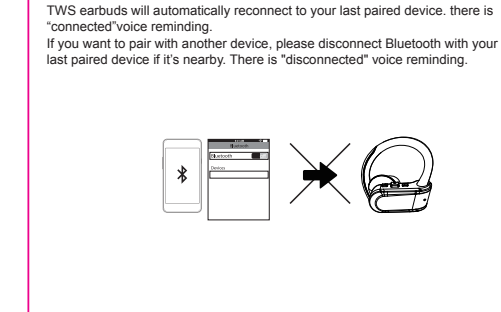
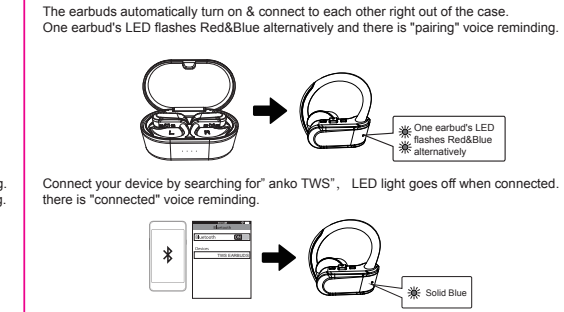
WARNING

- Working temperature: 0 - 45°C.
- Battery cannot be subjected to high or low extreme temperatures, low air pressure at high altitude during use, storage or transportation.
- Replacement of a battery with an incorrect type that can result in an explosion or the leakage of flammable liquid or gas.
- Disposal of a battery into fire or a hot oven, or mechanically crushing or cutting of a battery, that can result in an explosion.
- Leaving a battery in an extremely high temperature surrounding environment that can result in an explosion or the leakage of flammable liquid or gas.
- A battery subjected to extremely low air pressure that may result in an explosion or the leakage of flammable liquid or gas.
- This BT earbuds shall be charged by the supplied charging case only.

Powering on/off



Bluetooth pairing



P1

P2

P3

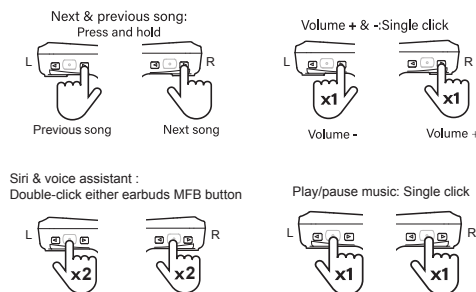
P4

P5

P6

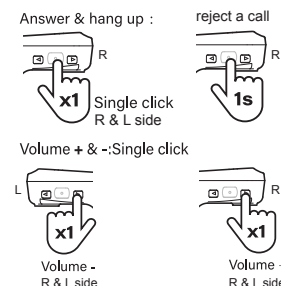
P7

Play music

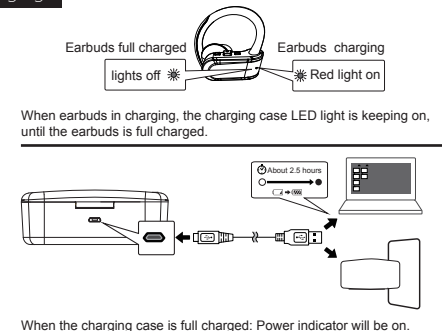


Phone call

1x press either side, answer/ hang up, press and hold 1s either side, reject incoming call.



Charging



Trouble Shooting and Common Situations

- Earbuds cannot power on**
Battery drain, please charge the device for 30 minutes, and then powering on.
Smart phone cannot search Bluetooth Earbuds
- Make sure the Earbuds is in pairing mode (Red and Blue LED flash alternately)
 - Delete pairing list in smart phone and searching Earbuds again.
 - If it still cannot be found, please restart smart phone and Earbuds again.
- Earbuds will be disconnected from time to time**
- The battery drain.
 - The Earbuds is beyond the communication range(10m)
- No sound on talking mode**
- Confirmed the Earbuds connected to smart phone mode on talking.
 - Try to volume up Earbuds or smart phone.
- No sound with music playing**
- Try to volume up Earbuds or smart phone.
 - Earbuds disconnected with smart phone, please reconnected again.
- Cannot charge for Earbuds**
- Make sure the earbuds placed well in the charging case.
 - make sure LED lights red.
 - Check if the charging case is drain up.
 - Charge the charging case.

Warranty

Thank you for your purchase from Kmart.

Kmart Australia Ltd warrants your new product to be free from defects in materials and workmanship for the period stated above, from the date of purchase, provided that the product is used in accordance with the accompanying recommendations or instructions where provided. This warranty is in addition to your rights under the Australian Consumer Law.

Kmart will provide you with your choice of a refund, repair or exchange (where possible) for this product if it becomes defective within the warranty period. Kmart will bear the reasonable expense of claiming the warranty. This warranty will no longer apply where the defect is a result of alteration, accident, misuse, abuse or neglect.

Please retain your receipt as proof of purchase and contact our Customer Service Centre on **1800 124 125 (Australia)** or **0800 945 995 (New Zealand)** or alternatively, via Customer Help at **Kmart.com.au** for any difficulties with your product. Warranty claims and claims for expense incurred in returning this product can be addressed to our Customer Service Centre at 690 Springvale Rd, Mulgrave VIC 3170.

Our goods come with guarantees that cannot be excluded under the Australian Consumer Law. You are entitled to a replacement or refund for a major failure and compensation for any other reasonably foreseeable loss and damage. You are also entitled to have the goods repaired or replaced if the goods fail to be of acceptable quality and the failure does not amount to a major failure.

For New Zealand customers, this warranty is in addition to statutory rights observed under New Zealand legislation.

P8

P9

P10

P11

P12

P13

P14