

anko

Hair Wave Styler



Model No.: WT-199A

Rev 2

Note: The specifications and/or components of this appliance are subject to change without prior notice.

1	Warnings	4
2	Important Safeguards	4
3	Components	7
4	Operation Procedure	7
4.1	Heat settings	8
4.2	Curling / Styling	8
5	Cleaning	9
6	Completion and Storage	10
7	Troubleshooting	10
8	Warranty Against Defect	11

**READ AND SAVE THESE INSTRUCTIONS FOR
FUTURE REFERENCE**

1 Warnings

This appliance is designed for Curling / Styling Human Hair only.

Do Not use this product to curl / style animal hair - fur or artificial hair.

IMPORTANT: Depending on the hair type being curled / styled, you may experience different results.

As such, it is strongly recommended to test curl / style the hair in an inconspicuous place before first use.

Do Not use on damaged or bleached hair.

Before using this appliance, read and follow all warnings and instructions in this manual, even if you are familiar with this product.

This appliance is not intended for use by persons (including children) with reduced physical, sensory or mental capabilities, or lack of experience and knowledge, unless they have been given supervision or instruction concerning use of the appliance by a person responsible for their safety.

Children should be supervised to ensure that they do not play with the appliance.

2 Important Safeguards



Please read this instruction manual carefully before first use. It is advisable to keep this instruction manual for future reference.

The appliance has heated surfaces. Persons insensitive to heat must be careful when using the appliance.

The unattended use by children or incapacitated persons may be dangerous.

Fully unwind the power cord before use. Ensure there are no knots or kinks in the power cord.

DO NOT leave the appliance unattended when plugged in. Always switch off and unplug from the power point when unattended and after use.

Take care that children cannot touch the appliance when in use, and make sure they cannot reach and pull the power cord.

Burn Hazard. Keep appliance out of reach from young children, particularly during use and cool down

Always place the appliance with the stand, if any, on a heat-resistant, stable flat surface.

To protect against the risk of electric shock, do not immerse the appliance, cord or plug in water or other liquids.



DO NOT use or store the product near sinks, baths or showers containing water or near running water.

DO NOT use in the bath, shower, spa, pool or other humid / wet areas etc.

If the appliance is used in a bathroom, unplug it after use since the proximity of water presents a hazard even when the appliance is switched off.

DO NOT use this appliance if it has been dropped or any part of the appliance (including the power cord and plug) has been damaged.

If the supply cord is damaged, do not use. Any repairs to the product must be carried out by qualified electrical person only, or the product must be disposed of.

DO NOT use this appliance with an extension lead, power board or double adaptor etc. The plug must be inserted directly into the power point.

The use of accessories not intended for use with this appliance may cause injuries to the user or damage to the appliance.

DO NOT place this unit on other appliances, on uneven surfaces or where it could be subject to heat sources (e.g. radiators or stoves), direct sunlight, excessive dust.

This appliance should not be placed near a hot gas or electrical burner or placed in a heated oven.

DO NOT allow the power cord to hang over the edge of the work surface or to come into contact with stoves or other hot surfaces.

The appliance should always be switched off before disconnecting from the power supply. Never pull the cord to disconnect the power point. Grasp the plug body.

There are no user serviceable parts in this appliance.

If this appliance is to be used by a third party, please supply the instruction manual with it.

Ensure children and babies do not play with plastic bags or any of the packaging material.

DO NOT touch or operate the appliance with wet hands or wet feet to reduce the risk of electric shock.

DO NOT carry the appliance by the power cord.

DO NOT cover the appliance while in use. The product will overheat and may cause fire, electrocution, damage to property or injury to persons.

Never reach or touch an appliance which has fallen into water. Unplug from the mains power point immediately.

Position the power cord properly so that it will not be walked on, tripped over or pinched by items placed on or against it.

DO NOT store or use the appliance near or in high temperature areas.

ONLY for indoor domestic use. Industrial or commercial use invalidates the warranty.

No liability can be accepted for any damage caused by non-compliance with these instructions or any other improper use or mishandling of appliance.

For additional protection, it is strongly recommended that the use of a residual current device (RCD) / safety switch with a tripping current not exceeding 30mA be used on the circuit supplying this product. If you are unsure if your home has this device, please contact your nearest Electrical Contractor

IMPORTANT

Caution Risk of Burning:



This appliance's surfaces get very hot during use.

Only hold by the handle and only touch the On / Off Heat Selector Switch and pad on the barrel clamp lever.

Burn Hazard. Keep appliance out of reach from young children, particularly during use and cool down.

Always place the appliance with the stand, if any, on a heat-resistant, stable flat surface.

Avoid touching the bare skin with the heated barrels and surrounding components as injury may occur.



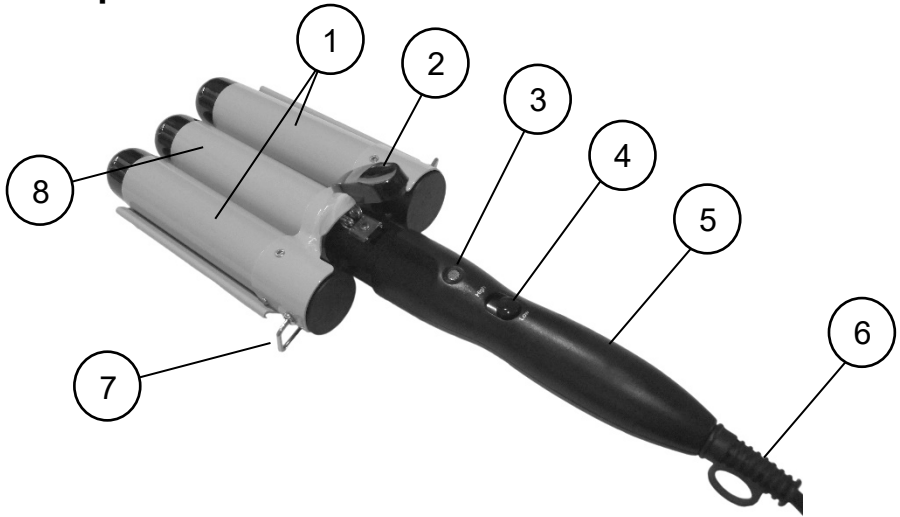
At the end of the appliance's life, it must be disposed of correctly.

Contact your local waste management authority for more information on Recycling and disposal facilities available in your area.

Do not dispose of electrical appliances as unsorted municipal waste, use separate collection facilities. Contact your local council for information regarding the collection systems available. If electrical appliances are disposed of in landfills or dumps, hazardous substances can leak into the groundwater and get into the food chain, damaging your health and well-being. Please contact your local council or regional authority for more information on collection, reuse, and recycling programmes.

Read and Save These Instructions

3 Components



1	Top Barrels	5	Handle
2	Barrel clamp lever	6	Power Cord
3	On / Off Indicator Light	7	Foldable Wire Stand
4	On / Off Heat Selector Switch	8	Bottom Barrel

4 Operation Procedure

WARNING: Never touch the hot curling / styling barrels or adjacent surfaces.

Important: Only hold the appliance by the handle.

Always extend the foldable wire stand to avoid heat damage to the surface it is placed on during use.

Do not place the Hair Wave Styler on a surface that is not heat resistant.

- Fully unwind the power cord ensuring there are no kinks or knots in the power cord
- Ensure the ON/OFF – Heat Selector switch is in the OFF position. (Centred)
- Fold out the wire stand and place the appliance on a flat, level and dry surface.
- Insert the plug into the power point and switch on at the power point.

- Slide the ON/OFF switch to either the High or Low heat setting, depending on your preference. This Indicator light will turn on.

Note: The barrels heat up very fast. It takes approx. 3 minutes to reach maximum temperature.

- When the appliance has heated up, you may start hair styling.

4.1 Heat settings

Low Heat Setting - Suitable for thinner and softer hair.

High Heat Setting - Suitable for thicker and coarser hair.

4.2 Curling / Styling

IMPORTANT: Before use, read the notes under the heading “1 WARNINGS” at the front of this instruction Manual.

Only use on dry hair.

Do Not use on damaged or bleached hair.

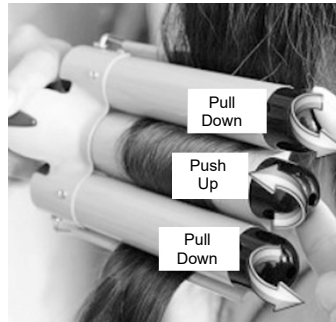
- Press the barrel clamp lever to open and separate the top and bottom barrels.
- Take a section of hair no more than 3cm wide.
- Position the hot barrels at least 10cm from the roots without touching the scalp.
- Place the hair strands between the top and bottom barrels, then release the barrel clamp lever, so that hair strands are clamped.



- Hold the Hair Wave Styler in position for 8 - 10 seconds to create gentle waves.

Note: if the barrels do not close together enough, or you want deeper waves, you can squeeze the barrels together by using the plastic ends on the barrels with your other hand.

Take care not to touch the hot surfaces.



- Press the barrel clamp lever to open and separate the top and bottom barrels and slide the hair strands out.
- Repeat this process until you have curled / styled all the hair you desire.
- Always remember to turn off and unplug when not in use and let fully cool.

5 Cleaning

CAUTION: DO NOT IMMERSE IN WATER OR LIQUID.

- Turn off, unplug from power point and allow to completely cool prior to cleaning.
- **Do Not** immerse in water, or any other liquid.
- **Never use** abrasive cleaners, solvents, steel wool, scouring pads, brushes, or strong chemicals that might or might not be flammable and/or damaging to the product to clean.
- Clean by using a damp (not wet) cloth with mild detergent and wipe over the surfaces.
- Dry thoroughly with a clean cloth.

DO NOT clean the On / Off (heat selector) switch with a damp cloth.

DO NOT place in a washing machine or dishwasher.

6 Completion and Storage

- After you have finished using the appliance, clean it as described under the Cleaning section then store safely in its box and in a dry place.
- Do Not wind the power cord around the appliance as this will damage the cord over time. Simply loop the cable and place next to the appliance.

7 Troubleshooting

BEFORE contacting a service agent, check the following points:

Symptom	Cause	Remedy
No power to the appliance	The Power Plug may not be plugged in to the power point or switched on.	Ensure the power plug is inserted into the power point correctly and switch on.
	There may be no power to the power point	Ensure there is power to the power point. Test with another appliance such as a table lamp.
Power is available but not heating	The Heat Selector Switch may be in the Off position (Centre)	Slide the switch to either "Low" or "High" setting.
	The internal heater has overheated	Turn off and allow appliance to cool. If the appliance does not work properly after approximately 1 hour, the Hair Wave Styler is faulty.
When the Heat selector switch is in the "low" or "high" position, and the indicator light is on, but still no heat	Not enough time passed to allow the appliance to heat up	Let the appliance heat for approximately 3 minutes.
Hair is singed or slightly damaged.	Heat setting too high	Turn the heat setting to "low" and allow 5 minutes for the appliance to cool down to the lower operating temperature.
	The application time is too long	Only clamp the hair in one spot for no longer than 8 – 10 seconds.

8 Warranty Against Defect

12 Month Warranty

Thank you for your purchase from Kmart.

Kmart Australia Ltd warrants your new product to be free from defects in materials and workmanship for the period stated above, from the date of purchase, provided that the product is used in accordance with accompanying recommendations or instructions where provided. This warranty is in addition to your rights under the Australian Consumer Law.

Kmart will provide you with your choice of a refund, repair or exchange (where possible) for this product if it becomes defective within the warranty period. Kmart will bear the reasonable expense of claiming the warranty. This warranty will no longer apply where the defect is a result of alteration, accident, misuse, abuse or neglect.

Please retain your receipt as proof of purchase and contact our Customer Service Centre 1800 124 125 (Australia) or 0800 945 995 (New Zealand) or alternatively, via Customer Help at Kmart.com.au for any difficulties with your product. Warranty claims and claims for expense incurred in returning this product can be addressed to our Customer Service Centre at 690 Springvale Rd, Mulgrave Vic 3170.

Our goods come with guarantees that cannot be excluded under the Australian Consumer Law. You are entitled to a replacement or refund for a major failure and compensation for any other reasonably foreseeable loss or damage. You are also entitled to have the goods repaired or replaced if the goods fail to be of acceptable quality and the failure does not amount to a major failure.

For New Zealand customers, this warranty is in addition to statutory rights observed under New Zealand legislation.

IMPORTANT!

For all technical queries or difficulties in operating the product and for spare parts, contact H.E. Group customer service 1300 105 888 (Australia) and 09 8870 447 (New Zealand).

