

<b>RMS International (USA) Inc.</b>		SUPPLIER: Ningbo Bright Future CO LTD		PACKAGING TYPE: REF NO. US33-1923/KMART Mosaic Birdhouse IM		DATE: Oct 21, 2020	FILE TYPE: AI, CS6	V1.0
DIMENSIONS: A5		UPC:		TRACKING:		COLOR: 1 COLOR PRINTING <input type="checkbox"/> K		
MATERIAL: Plain Paper				FINISH:				
DESIGNER: Abigail Loughlin			EMAIL: abigail.loughlin@rmsint.com		FOIL:		FOIL LAYER NAME:	
							<p>PLEASE FOLLOW SPECS LISTED ABOVE</p> <p><b>PREPRESS/PRODUCTION NOTE:</b> TRAPPING AND OVERPRINTING MUST BE APPLIED BEFORE THIS ELECTRONIC FILE IS OUTPUT FOR FILM</p> <p><b>BARCODES: IMPORTANT PRE-INTERCALATION!</b> PHYSICALLY SCAN AND CONFIRM ALL BAR CODES ARE CORRECT AND SCANNABLE BEFORE FILMS AND MASS PRINTING. DO NOT SIMPLY READ THE NUMBER AND ASSUME IT IS CORRECT. IF YOU ARE UNSURE, PLEASE STOP AND CONTACT RMS INTERNATIONAL USA.</p>	
DESIGNER	PROOF READER	SM	PD MANAGER <small>HOW PRODUCTIONS SPECIAL BY ACCOUNTS ONLY.</small>	COMP.	ACCOUNT SPECIALIST <small>ORDERS ONLY.</small>	CEO	<p>THIS ARTWORK HAS BEEN PROOF READ TO ENSURE IT MEETS QUALITY STANDARDS OF RMS INTERNATIONAL (USA) INC.</p> <p><b>rms</b> international UNITED STATES</p>	

# MAKE YOUR OWN MOSAIC BIRDHOUSE

3+  
Years

## INSTRUCTIONS:



1. Slot in the front and back panel into the base, use a little glue in the slots to secure. Allow to dry.



2. Glue the edge of one of the side panels and slot them in between the front and back panel. Repeat for the other side.



3. Thread the string through the two holes of the roof, this will help keep them together while you glue the roof panels on the top of the house.

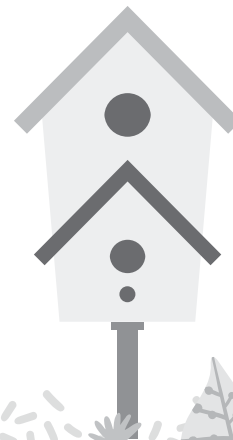
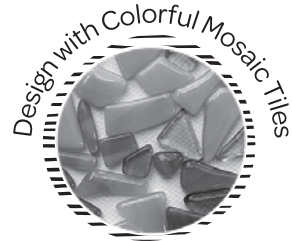


4. Using the glue, attach the front of the roof to the house and allow to dry. Repeat for the back.



5. Paint and glue your mosaic tiles on and let dry.

6. Once your birdhouse is fully dry, hang it up in the garden and enjoy!



**⚠ WARNING:**  
CHOKING HAZARD - Small parts. Not for children under 3 yrs.