

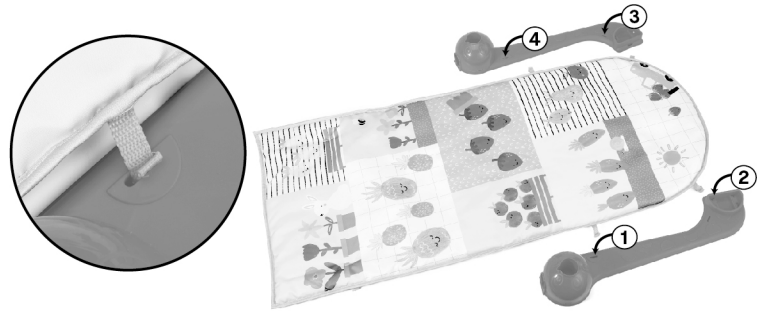
**Piano Play Mat & Gym  
Instruction Manual**

**3+**  
months

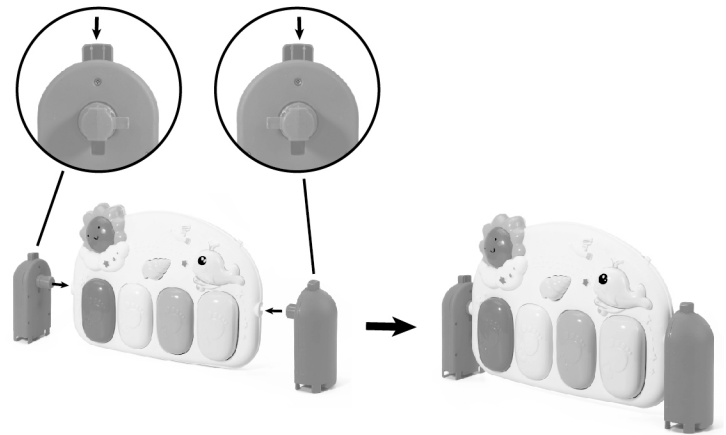


THE ILLUSTRATIONS SHOWN IN THIS MANUAL ARE FOR REFERENCE ONLY. THE MANUFACTURER RESERVES THE RIGHT TO CHANGE ANY SPECIFICATION OR FEATURE WITHOUT FURTHER NOTICE. PLEASE READ CAREFULLY BEFORE USE AND KEEP FOR FUTURE REFERENCE.

1. Place the play mat flat on the floor. Place the 2 base boards on each side of the play mat. Thread 1 of the straps through the matching hole on the base board. Repeat for the 3 remaining holes. See below image:

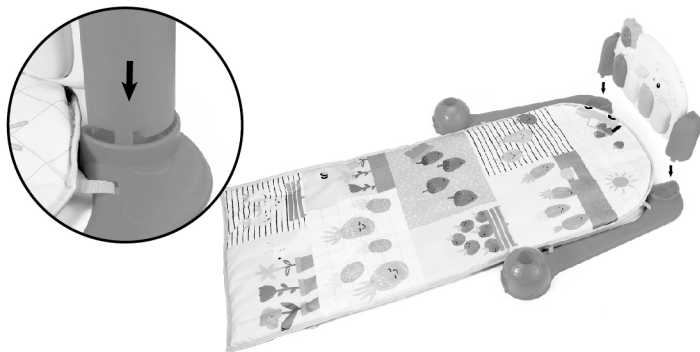


2. Insert the piano support bars into the piano and press the button at the top of each support bar to lock the piano in place. Ensure the direction of the support bars were inserted correctly. See below image:

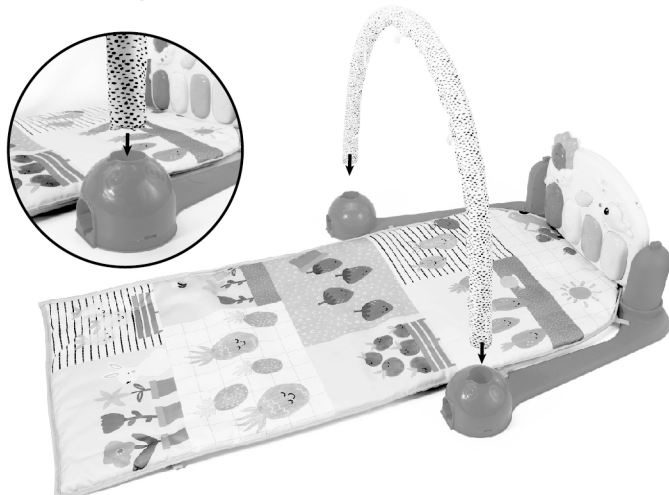


2

3. Insert the assembled piano unit into the base boards. Ensure that it is firmly secured with a "click" sound. See below image:



4. Insert 1 arch bar into the base boards. Ensure the arch bar is firmly secured. See below image:



3

5. Insert the hanging toys into the loops of the arch bar. See below image:



4

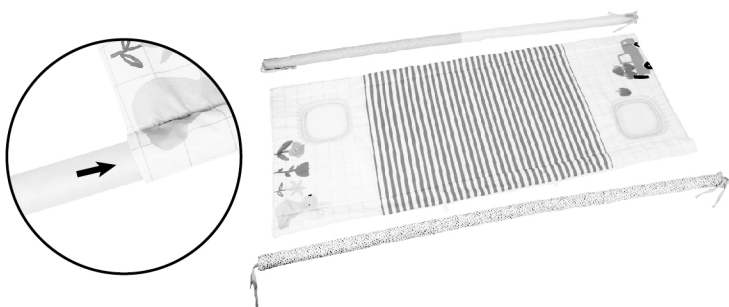
# Tummy Time

Place the play mat on the floor with base boards and insert the piano as per previous instructions. Remove the ring from toys and place the toys on the play mat. See below image:



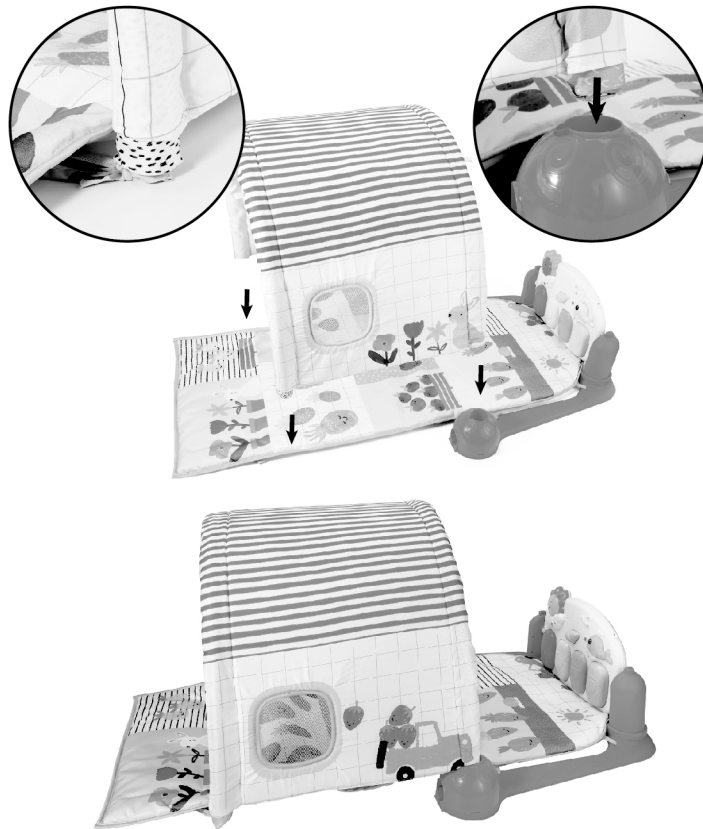
# Tunnel Time

1. Insert an arch bar into each slot of the tunnel. See below image:



5

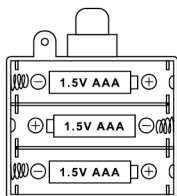
2. Insert 1 side of the assembled tunnel into the base boards. The other side of the assembled tunnel is to be tied to the play mat using the play mat straps located on each side of the play mat. Ensure the straps are tied tightly and the assembly is secured firmly before use. See below image:



6

## Battery installation and replacement:

- › Switch off the power of the unit.
- › Loosen the screw to open the battery compartment door.
- › Insert/Replace the new batteries in the proper direction indicated on the product.
- › Close the compartment and screw shut securely.



## Battery notice

- › Batteries are to be inserted with the correct polarity.
- › Do not mix different types of batteries or new and used batteries.
- › Non-rechargeable batteries are not to be recharged.
- › Rechargeable batteries are only to be charged under adult supervision.
- › Rechargeable batteries are to be removed from the toy before being charged.
- › The supply terminals are not to be short-circuited.
- › Remove batteries from the toy when not in use for extended time or when batteries become exhausted.
- › Dispose of batteries responsibly.
- › Do not dispose of in fire.
- › Batteries must be installed and replaced by an adult.
- › This toy produces flashes that may trigger epilepsy in sensitised individuals.

## Care and maintenance

- › Keep the unit out of direct sunlight and away from any direct heat source.
- › If the toy suddenly stops working or the sound seems weak, the problem may be low battery power. If this is the case, install a new set of batteries before use.
- › Surface wash with a clean, damp sponge or cloth. Air dry only. Do not immerse in water.

Images/Drawings in the manual are for visual purposes only. Actual product may vary slightly.

The manufacturer reserves the right to change any specification or feature without prior notice.

7

## Warning!

- › To prevent entanglement injury, never place the play mat in a crib or playpen. Use only on a flat, horizontal floor. Never add strings, ties, straps or other products to the play mat.
- › To ensure your child's safety, this product must be assembled by an adult.

## Important!

- › To ensure your child's safety, please follow the instructions below carefully and ensure the final assembly is correct. Check frequently.
- › Product should be used with adult supervision.
- › Inspect the play mat before each use.
- › Never leave a baby unattended on the play mat.
- › Babies should not be allowed to sleep unsupervised while laying on this play mat.
- › Do not lift or attempt to move the play mat with baby on it.
- › Do not use this play mat as a blanket.
- › Use this product only on the floor.
- › Never use on any elevated surfaces.
- › Keep away from fire and strong heat sources.

This sheet contains important information. Please keep the instruction manual for future reference.

KEYCODE: 43-014-033

MADE IN CHINA  
FOR AU / NZ: IMPORTED FOR KMART  
STORES IN AUSTRALIA AND NEW ZEALAND.

8