

148*220mm

anko

Stitch by Colour

3+
years

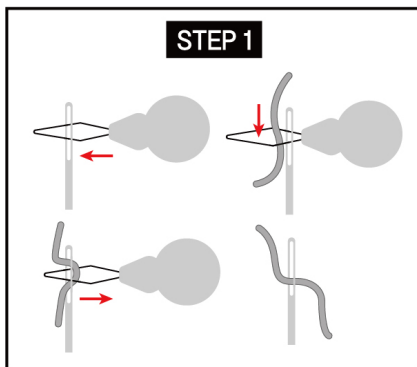
CONTENTS:

- 1 x plastic needle
- 1 x needle threader
- 1 x wooden stitching board
- 5 x threads

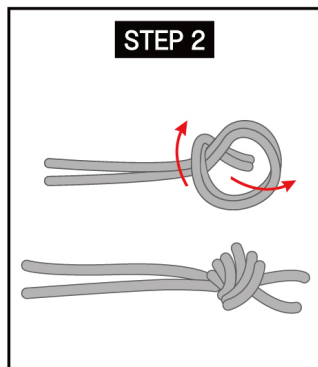
TIP:

1. Tighten the threads when stitching.
2. Keep the package nearby so that you can look at the picture for inspiration.

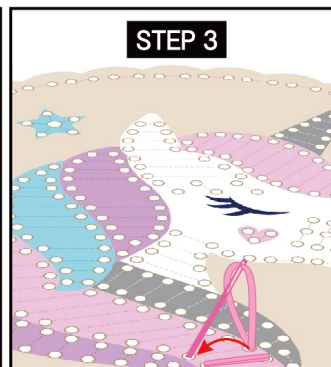
HOW TO STITCH :



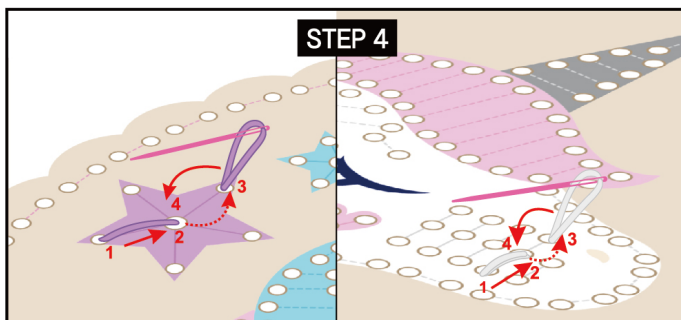
Select a colour yarn, and cut a long piece. Insert the threader into the eye (hole) of the needle. Then thread the yarn through the hole in the threader and pull threader back through the eye of the needle. Remove the threader from the end of the yarn. The needle will now be threaded.



Tie both ends of the yarn into a double knot. Starting at the back of the board and at the edge of a colour section, bring the needle up through a hole matching the colour yarn.



Follow the dotted line, and push the needle down through the next hole. Continue as indicated to stitch over and under the board until the yarn runs out. Secure the yarn with a knot in the back when finished with a section.



For solid line. This stitch loops backwards under the board to create a connected stitch on the top of the board. After going up through a hole, go back through the previous hole, stitching through the same hole twice. Next, skip over a hole and repeat. Repeat basic and back stitches in all the colours until the board is complete! Secure yarn with a knot in the back when finished.



Your new decoration is now complete.

WARNING:
LONG CORD AND SMALL PARTS. STRANGULATION AND CHOKING HAZARD. NOT FOR CHILDREN UNDER 3 YEARS

WARNING: THE PRODUCT CONTAINS FUNCTIONAL SHARP POINT(S)/SHARP EDGE(S). PLEASE USE AS INTENDED.

PRODUCT MAY VARY FROM IMAGE SHOWN.
PLEASE KEEP THE PACKAGING FOR FUTURE REFERENCE.
ADULT SUPERVISION IS RECOMMENDED.