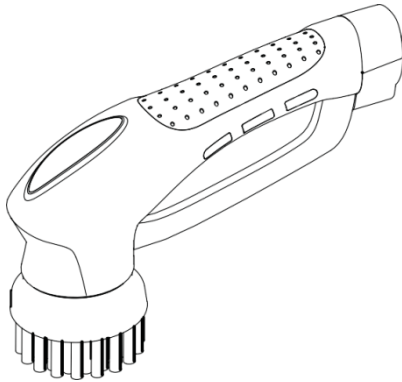


anko

**Rechargeable
Cleaning Brush
FD-ESC(A)
User Manual**



**PLEASE READ AND SAVE THESE
INSTRUCTIONS FOR FUTURE REFERENCE**

IMPORTANT SAFEGUARDS



Warning! To reduce the risk of fire, electrical shock or injury:

- This appliance is not intended for use by persons (including children) with reduced physical, sensory or mental capabilities, or lack of experience and knowledge, unless they have been given supervision or instruction concerning use of the appliance by a person responsible for their safety.
- Children should be supervised to ensure that they do not play with the appliance.
- Fix the brushes firmly before operation.
- To protect against risk of electrical shock, do not put battery charger in water or other liquids.
- Do not operate in the presence of explosives or flammable fumes or liquids.
- Always wear eye protection when using the scrubber with irritating substances. You may also use rubber gloves.
- Keep hair, loose clothing, and all parts of body away from moving parts.
- Do not insert attachments/accessories when unit is running.
- Do not put it under water without battery cover in place.

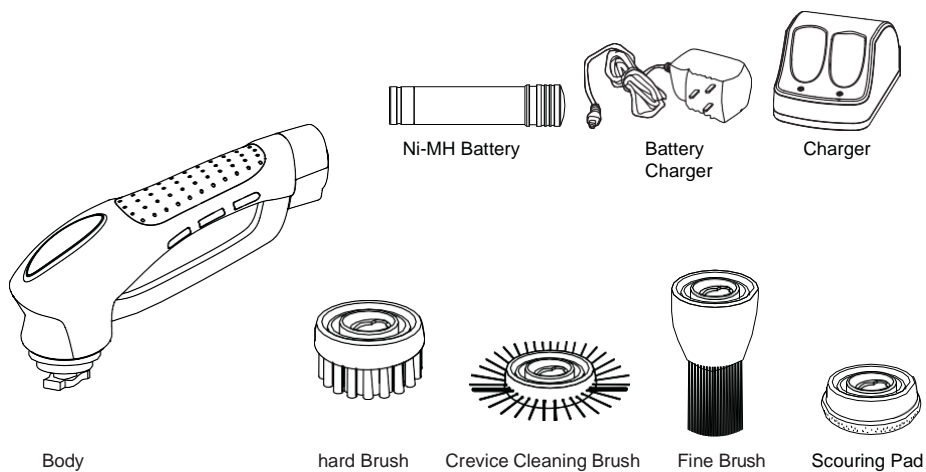


Important safety instructions for the battery, battery charger and charger.

- Do not store or carry battery so that metal objects can contact exposed metal end.
- Do not place battery in aprons, pockets, drawers, etc. with loose nails, screws, keys, etc. Without protective battery cap. The battery could short circuit causing fire, personal injury, or damage to battery.
- Never attempt to open the battery for any reason. If the housing of the battery is broken or cracked, immediately discontinue use and do not recharge the battery.
- Do not charge the battery if it is wet or shows any evidence of corrosion.
- keep the appliance away from heat, oil or flammable objects.
- Do not incinerate the battery. It can explode in a fire.
- Make sure the battery charger matches with the standard socket, the voltage of the socket and electrical source must in line.
- This item is equipped with specialised rechargeable battery and battery charger.
- Never attempt to open the charger for any reason.
- Disconnect from mains power before cleaning or maintaining it.
- Do not use the battery charger and charging station near water or in a wet or damp place.
- Do not use the damaged cord and plug of battery charger. If the supply cord is damaged DO NOT use. For electrical safety, any repairs to the product should only be carried out by a qualified electrical person only or the product must be disposed.
- Only use it indoor.
- Keep the battery charger away from sharp objects.
- Do not recharge non-rechargeable batteries in the charging station.
- Rechargeable battery must be removed from the appliance before being charged.
- If the appliance is to be stored unused for a long period, the battery should be removed.
- The supply terminals are not to be short-circuited.

KNOW YOUR APPLIANCE

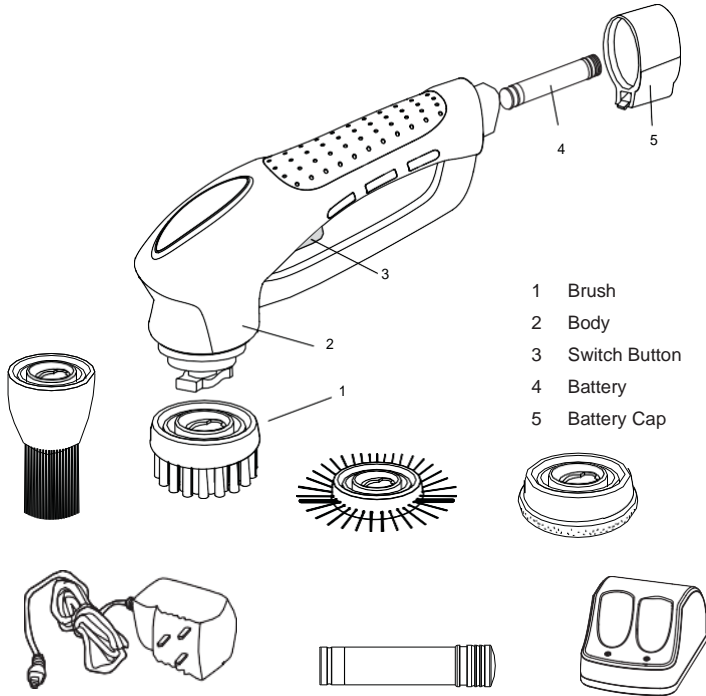
Please check the product list before you use the unit.



PRODUCT INTRODUCTION

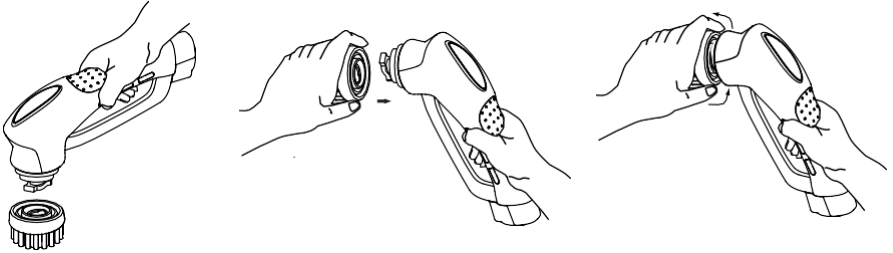
Product Introduction:

The rechargeable cleaning brush includes four replaceable brushes and the concave handle design is anti-slip and waterproof. The streamlined outlook, tightly-sealed and water-proof material makes it safe when operating under water (up to 1M for 30 minutes duration). The smart and portable power cleaner also suitable for open-air cleaning.



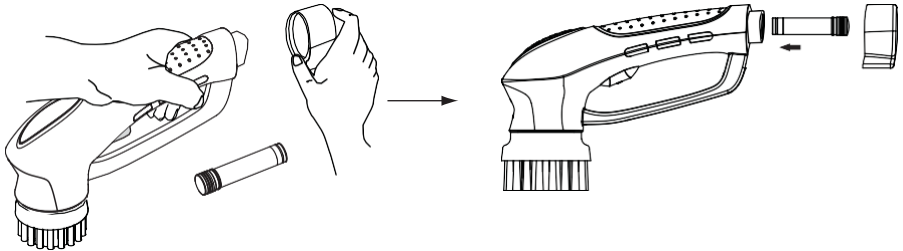
HOW TO USE

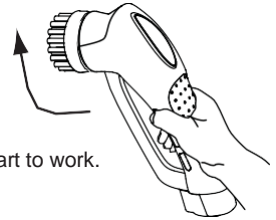
1. Fix the suitable brush firmly.



2. Open the battery cap on the bottom of the handle, put the battery in and close the cap.

Notice: When you take off or putting on the battery cap, please try to pull it out or push it in completely.



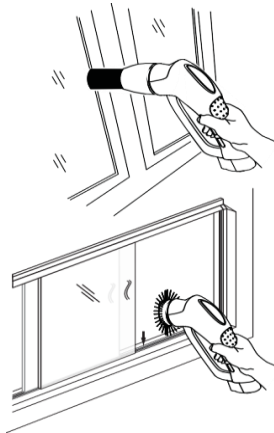


3. Press the switch button on handle, and the cleaning brush will start to work.

The function of the brushes

Equipped with different types of brushes, the cleaner is suitable to all kinds of cleaning work.

- Crevice Cleaning Brush -- powerfully clean grooves, corners, slits, such as tiles & doorslots.
- Hard Brush -- powerfully clean large objects, tile walls, floors, avant-garde glasses, and hard plastic surfaces.
- Fine Brush -- suitable to clean slots and corners that are usually difficult to clean; and some easily damaged surfaces.
- Scouring Pad -- suitable to clean large areas, such as ceramic tiles, bathtubs and sinks etc.



BATTERY & CHARGING

Battery & Charging:

This product uses 1pc Ni-MH rechargeable recyclable battery which can be charged many times to give long life and repeatedly full power.



Ni-MH Battery



Battery charger

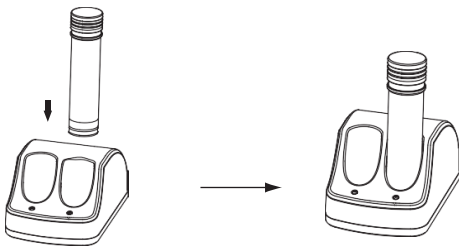


Charger

Remove the battery by opening the battery cap and pulling out the battery. With the 3.6Vd.c. rechargeable battery (Ni-MH, 2.1Ah), insert it into any one socket of the charging station and connect the battery charger to the mains power outlet. The Ni-MH battery must be recharged 18 hours for the first 3 times and 13 hours thereafter. The battery should provide approximately 60 minutes of use when fully charged.

During the charging status, the indicating light on the charging station will be red colour. After the battery is fully charged, the indicating light will turn to green colour.

NOTE: Both charging sockets can be used for charging. Use only with the battery charger supplied KH6-084040AU.



USER TIPS

For better performance:

Can be used with different kinds of cleaners such as spray, foam, gel, liquid, as well as bleach. Please follow the manufacturer's instructions carefully. Frictional cleaners should not be used.



Warning! Please wear safety gloves and protective glasses when strong cleaner is used.

1. If you are not sure the surface can be used with the brush, you should first test it on an inconspicuous area.
2. Ensure to power off the appliance before removing from the cleaning surface to avoid spraying and/or splashing.
3. The cleaner is powerful, excessive force is not required. It is better to brush in a circular motion for big areas. Do not keep brushing in a small area for a long time, this will cause heat damage to the surface due to friction.

MAINTENANCE AND STORAGE

Clean the product and accessories after use to enhance the life of the product.

1. Always clean the product and accessories immediately after use.
2. Use a mild detergent and soft sponge to clean it.
3. Keep the surface of the cleaning brush clean to guarantee sealing ability.
4. Please store the product indoor.

TECHNICAL SPECIFICATION

Battery Charger Input	100-240V~ 50/60Hz 0.2A
Battery Charger output	8.4Vd.c. 400mA
Ni-MH Rechargeable Battery	FD-RSW-3.6, 3.6Vd.c. 2.1Ah
Ni-MH Battery Charging Input	3.6Vd.c. 200mA

12 MONTH WARRANTY

Thank you for your purchase from Kmart.

Kmart Australia Ltd warrants your new product to be free from defects in materials and workmanship for the period stated above, from the date of purchase, provided that the product is used in accordance with accompanying recommendations or instructions where provided. This warranty is in addition to your rights under the Australian Consumer Law.

Kmart will provide you with your choice of a refund, repair or exchange (where possible) for this product if it becomes defective within the warranty period. Kmart will bear the reasonable expense of claiming the warranty. This warranty will no longer apply where the defect is a result of alteration, accident, misuse, abuse or neglect.

Please retain your receipt as proof of purchase and contact our Customer Service Centre on 1800 124 125 (Australia) or 0800 945 995 (New Zealand) or alternatively, via Customer Help at Kmart.com.au for any difficulties with your product. Warranty claims and claims for expense incurred in returning this product can be addressed to our Customer Service Centre at 690 Springvale Rd, Mulgrave Vic 3170.

Our goods come with guarantees that cannot be excluded under the Australian Consumer Law. You are entitled to a replacement or refund for a major failure and compensation for any other reasonably foreseeable loss or damage. You are also entitled to have the goods repaired or replaced if the goods fail to be of acceptable quality and the failure does not amount to a major failure.

For New Zealand customers, this warranty is in addition to statutory rights observed under New Zealand legislation.