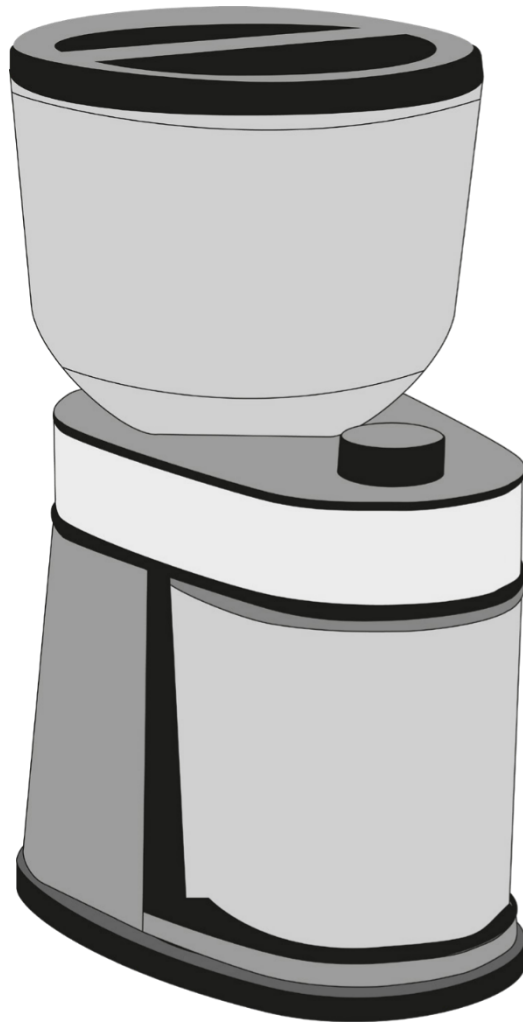


# **anko**

**Coffee Grinder  
CG85  
User Manual**



**PLEASE READ AND SAVE THESE  
INSTRUCTIONS FOR FUTURE REFERENCE**

# **IMPORTANT SAFEGUARDS**

**When using electrical appliances, basic safety precautions should always be followed, including the following:**

1. Read all instructions carefully.
2. To protect against risk of electric shock, do not put appliance, cord, or plug in water or other liquid.
3. This appliance should not be used by children without adult supervision. Keep the appliance and its cord out of reach of children.
4. Children should be supervised to ensure that they do not play with the appliance.
5. This appliance can be used by persons with reduced physical, sensory or mental capabilities or lack of experience and knowledge if they have been given supervision or instructions concerning use of the appliance in a safe way and understand the hazards involved. Cleaning and user maintenance shall not be made by children without supervision.
6. Always disconnect the appliance from the supply if it is left unattended and before assembling, disassembling or cleaning.
7. Turn unit off and unplug from outlet when not in use, before putting on or taking off parts, and before cleaning. To disconnect, turn off, grasp plug, and pull from wall. Never yank on cord.
8. Avoid contact with moving parts.
9. Keep hands and utensils out of container while appliance to reduce the risk of severe injury to persons or damage to the appliance.
10. If the supply cord is damaged, it must be replaced by the manufacturer, its service agent or similarly qualified persons in order to avoid a hazard.
11. The use of attachments, including ordinary jar and processing assembly parts not recommended or sold by the appliance manufacturer may cause fire, electric shock, or injury to persons.
12. If the thermal cut-out circuit is activated, it must be replaced by a qualified electrical person only to avoid an electrical safety hazard.
13. The appliance is designed for indoor use only.
14. Do not let cord hang over edge of table or counter or touch hot surfaces, including the stove.
15. IMPORTANT! blades are sharp. Handle carefully.
16. Do not use this appliance for other than intended use.
17. IMPORTANT! always operate the appliance with cover in place.
18. Do not leave the appliance unattended while it is operating.

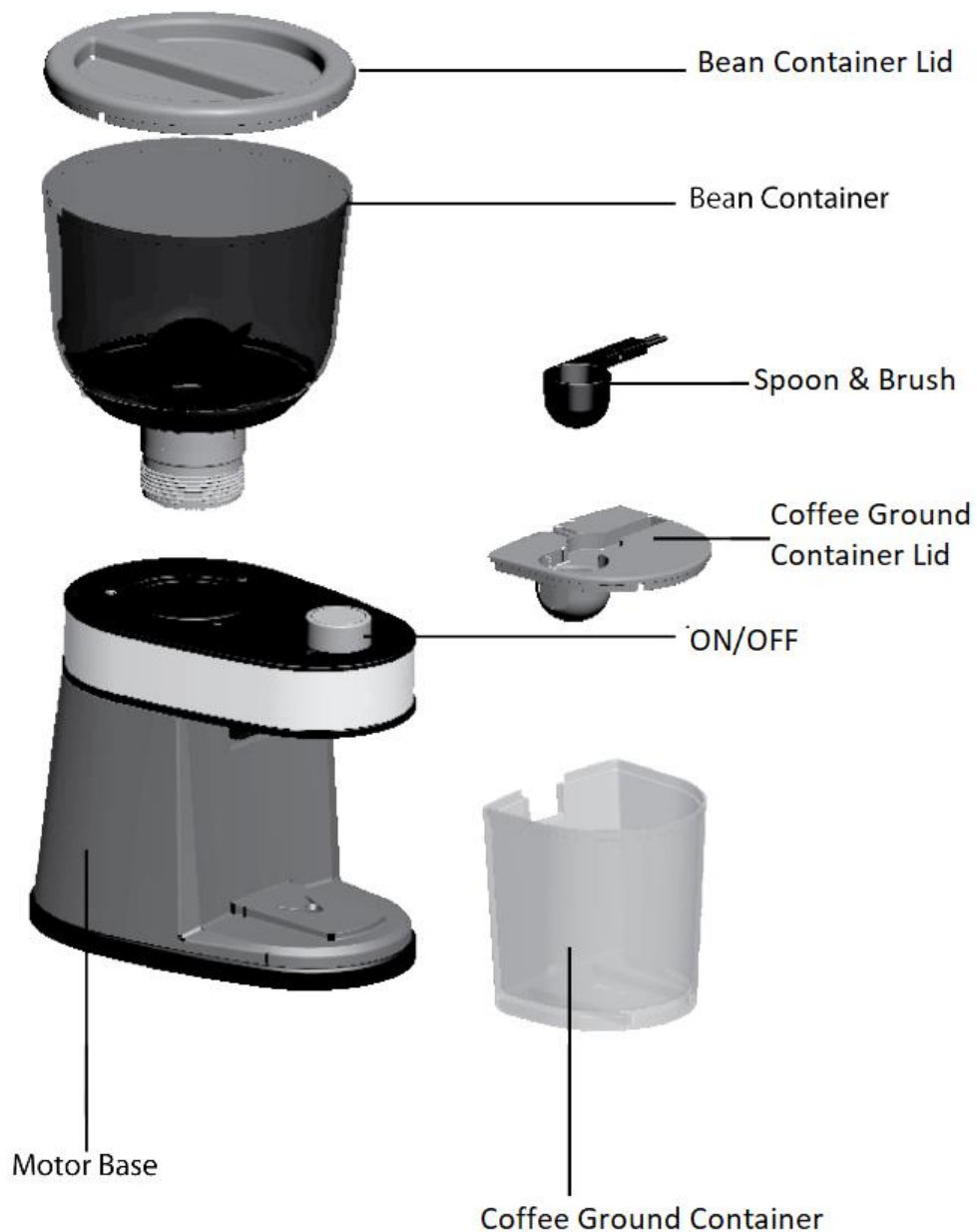
19. Do not operate in the presence of explosive and / or flammable fumes.
20. To disconnect, stop the grinder, then remove plug from mains power outlet.
21. IMPORTANT! screw on bean hopper bottom firmly. Injury can result if moving blades accidentally become exposed.
22. Do not place/remove mixing hopper on/from motor base while motor is running.
23. Do not run the motor while mixing hopper is empty. This can damage the electric motor.
24. This appliance is intended to be used in household and similar applications such as:
  - staff kitchen areas in shops, offices and other working environments,
  - farmhouses,
  - by clients in hotels, motels and other residential type environments,
  - bed and breakfast type environments.

**IMPORTANT!**

**To prevent damage to the electric motor, the maximum operating time is 1 minute. Allow it to rest for at least 3 minutes before using it again. After 5 cycles of operation, allow the coffee grinder (electric motor) to cool down for approx. 30 minutes before using it again.**

**SAVE THESE INSTRUCTIONS**

## **KNOW YOUR UNIT**



---

## **BEFORE FIRST USE**

- Unpack the Coffee Grinder and remove all packaging materials carefully.
- Wash the removable parts. See “CARE AND CLEANING” section.
- Place the Coffee Grinder on a dry, level surface. Do not plug the unit to mains power until completely assembled.

## **Assembling Your Coffee Grinder**

Place the coffee grinder base on a flat, level surface. Carefully screw in the assembled bean container into the well on the top of the coffee grinder. Place the lid onto the top of the bean container. Plug the appliance into a 220-240 Voltage 50-60Hz AC outlet only. Your coffee grinder is now ready for use.

## **Using Your Coffee Grinder**

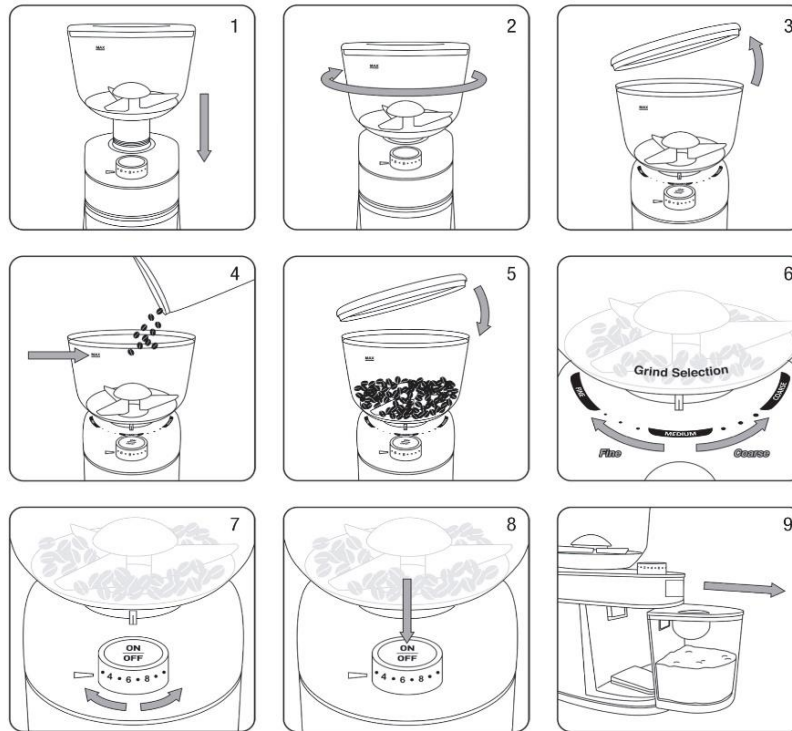
The control button is located on the top of the coffee grinder.

1. Be sure the unit is unplugged. Put the bean container on top of the coffee grinder (1). Turn the bean container clockwise (2) until the bean container clicks into place.
2. Remove bean container lid (3).
3. Fill bean container with coffee beans (Max 230g) (4). **Make sure the lid closes securely (5).**
4. Connect the supply cord plug into a mains power outlet socket.
5. Turn the bean container clockwise for fine grind, and anticlockwise for coarse grind (6).

6.

<b>IF GRINDING</b>	<b>GRIND SETTING</b>
Percolator / French Press	Coarse
Automatic Drip Coffee Maker	Medium
Espresso Maker	Fine

7. Rotate "ON/OFF" knob to select number of cups: 1-14 (7). Take into account that, based on personal preference, you can make your coffee stronger or weaker by adjusting cup selection.
8. Press ON/OFF to begin grinding (8).  
**Please note: A safety feature of the grinder will not allow the coffee grinder to operate unless the bean container and coffee ground container are properly installed in place.**
9. Grinding will automatically stop upon completion.
10. To manually stop the operation, press and release ON/OFF button, the unit will stop. To restart, repeat steps 6 & 7.
11. Remove Coffee ground container (9), make coffee, and enjoy!



## **CARE AND CLEANING**

1. Always switch off and disconnect from mains power before cleaning.
2. Do not immerse the appliance body, cord or plug in water. Simply wipe the coffee grinder body with a damp cloth.
3. Do not use abrasive cleaners or scouring pads on the bean container or lid as these may scratch or damage the surface.
4. For best result and to avoid coffee ground from becoming stuck on any parts, clean accessories, coffee ground container and the lid immediately after each use.
5. Store the bean container and the lid in the unlocked position when not in use. Store all accessories in a safe location out of the reach of children.

### **CLEANING**

1. Before cleaning, turn off and unplug the appliance.
2. Remove Bean hopper by turning it counterclockwise until loose.
3. Remove the Coffee hopper and lid assembly.
4. Remove lid and lid cap. Wash removable parts by hand or in the dishwasher.

## **TECHNICAL SPECIFICATION**

Voltage: 220-240V~ 50-60Hz

Power: 125W

## **12 MONTH WARRANTY**

Thank you for your purchase from Kmart.

Kmart Australia Ltd warrants your new product to be free from defects in materials and workmanship for the period stated above, from the date of purchase, provided that the product is used in accordance with accompanying recommendations or instructions where provided. This warranty is in addition to your rights under the Australian Consumer Law.

Kmart will provide you with your choice of a refund, repair or exchange (where possible) for this product if it becomes defective within the warranty period. Kmart will bear the reasonable expense of claiming the warranty. This warranty will no longer apply where the defect is a result of alteration, accident, misuse, abuse or neglect.

Please retain your receipt as proof of purchase and contact our Customer Service Centre on 1800 124 125 (Australia) or 0800 945 995 (New Zealand) or alternatively, via Customer Help at [Kmart.com.au](http://Kmart.com.au) for any difficulties with your product. Warranty claims and claims for expense incurred in returning this product can be addressed to our Customer Service Centre at 690 Springvale Rd, Mulgrave Vic 3170.

Our goods come with guarantees that cannot be excluded under the Australian Consumer Law. You are entitled to a replacement or refund for a major failure and compensation for any other reasonably foreseeable loss or damage. You are also entitled to have the goods repaired or replaced if the goods fail to be of acceptable quality and the failure does not amount to a major failure.

For New Zealand customers, this warranty is in addition to statutory rights observed under New Zealand legislation.