

anko

CD Boombox
USER MANUAL
43024995



Safety Instructions

CLASS 1 LASER PRODUCT

CAUTION!
THIS PRODUCT UTILIZES A LASER. USE OF CONTROL OR ADJUSTMENTS OR PERFORMANCE OF PROCEDURES OTHER THAN THOSE SPECIFIED HEREIN MAY RESULT IN HAZARDOUS RADIATION EXPOSURE. DO NOT OPEN COVERS AND DO NOT REPAIR YOURSELF. REFER SERVICING TO QUALIFIED PERSONNEL.

This CD Player adopts semiconductor unit, not including spare parts for users to replace. Don't take apart the machine by yourself to avoid electric shock. If the machine is damaged, please ask the qualified maintenance worker to repair.

POWER

Power of this player should be used corresponding to the information on the rating label.

VENTILATION

5cm minimum distances around the CD player for sufficient ventilation.

The function of air vent on the main case is to keep CD Player from overheating. Don't block or cover the air vent and put the player on the bed or sofa. The ventilation should not be impeded by covering the ventilation openings with items such as newspaper, table-cloths, curtains etc.

HEAT SOURCE

The machine should be kept away from heat source, such as stoves and direct sunlight.

NAKED FLAME SOURCE

The machine should be kept away from naked flame sources, such as lighted candles should be not placed on the machine.

WATER AND MOISTURE

Don't use this machine in the humid environment, such as bathroom, kitchen, humid basement and so on.

Caution:

The apparatus shall not be exposed to dripping or splashing and that no objects filled with liquids, such as vases, shall be placed on apparatus.

CLEANING

Before cleaning, please put the power off first. Don't use liquid cleaners or corrosive fluid to clean the machine, just clean it by a soft cloth.

POWER

While inserting or pulling out power cord, grip the plug not the wire. If do not use the machine for a long time, please pull out power cord. To be completely disconnect the power input, the

mains plug of machine shall be disconnected from the mains.

The mains plug of machine should not be obstructed OR should be easily accessed during intended use.

DISC TRAY DOOR

While closing the disc tray door, keep fingers away from it to avoid being damaged.

LOADING WEIGHT

Don't put any heavy objects on the machine in order to keep the machine from being damaged.

CONNECTING OTHER EQUIPMENTS

Before connecting other equipments with the CD Player, make sure to put off the power. Otherwise, it will make equipments or users damaged.

Radium Laser

While the case is open and the CD Player is working, don't look at the laser directly with naked eyes, otherwise, it will have a bad influence on the eyesight.

DISC

Avoid using the disc which is cracking, deformed or repaired, otherwise, the machine will appear malfunction or shorten usage life.

MALFUNCTION REQUIRING MAINTENANCE

If the following problems appear, please put off the power, and contact the qualified maintenance worker.

- The power cord or plug is damaged.
- Liquid or other foreign matters in the unit.
- The machine is caught in the rain or watered.
- While the machine can't work even according to the manual operation, don't press other button which aren't mentioned on the manual. Otherwise, it will cause the machine damaged and take the maintenance worker more time to fix.
- The machine drops from high place.
- The inner part gives out a burnt smell.

Maintenance

If you aren't familiar with the maintenance technical skill of the machine, don't try to fix it by yourself. If you open the main case, you might be get electric shock. If needed, contact the qualified maintenance worker.

SAFETY INSPECTION

After maintenance, requesting maintenance worker to implement site safety inspection to make sure the machine works safely.

NOTE:

The use of apparatus in moderate climates. Please read the manual carefully before using the machine, and keep it well for using in the future.

Precautions

1. When carrying the CD Player, use the original shipping carton and packing materials. It's the best way to protect the play with the factory package.

2. Don't place the CD Player nearby volatile liquid, and don't let the rubber or plastics product to connect with the player for a long time, which will leave traces on the machine cover.

3. After working for a long time, the upper cover or rear panel will give out heat, which belongs to normal phenomenon not malfunction.

4. While not using the CD Player, please take disc out and close the disc chamber, then turn off the power.

5. While not using the CD Player for a long time, some functional button may not work. In order to avoid appearing that phenomenon, advise to use it for a while or pay attention to moistureproof.

LOCATION PRECAUTIONS

While placing the CD Player at the side of TV, Radio or Video Recorder, it may appear phenomenon like the picture showed not clear or the sound loses true. Therefore, keep the CD Player away from that kind of equipment.

CLEANING PRECAUTIONS

- Cleaning by a soft cloth
- Using a cloth with a little bit diluted detergent to wash the stain. Please remind that don't use any dissolvent such as thinner, gasoline solvents and volatile liquid, for which will damage the player cover.
- Using chemical soaked cloth to clean the CD Player, Please wash the player according to the usage instruction.

NOTE: Cleaning and adjusting interior parts have to be operated by qualified maintenance worker, otherwise damage the player or shorten usage life.

DISC USAGE PRECAUTIONS

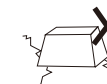
- How to get a disc: don't touch the side of playing



- Cleaning Disc: clean the disc from the center to outside by a soft cloth. If the picture and sound quality was influenced because of fingerprints or dust on the disc, wiping the disc by a wet cloth and then wiping by a dry cloth. Don't use Dissolved in toluene, detergent or Anti static spray to wash the disc, or damage it.



- Storing the disc: placing the disc to the disc box instead of humid or dusty place and direct sunshine place.

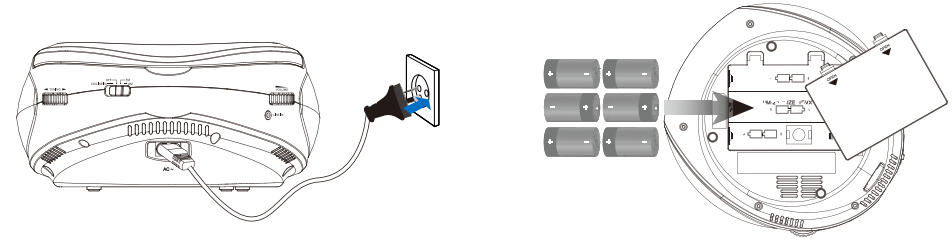


BATTERY PRECAUTIONS

If using batteries incorrectly, the battery fluid would leak or the battery will be corroded. Therefore, please operate correctly as the following instruction.

- While putting batteries into remote control, don't take anti to the positive and negative polarity of the battery.
- Don't charge the battery (not rechargeable batteries), disassemble and decompose the battery or put it into fire.
- Don't use different models batteries together or new batteries with old ones.
- Don't leave damaged or dead battery into the remote control.
- If not using the remote control for a long time, put batteries out to protect it from being damaged for battery fluid leaking.
- If the remote control work abnormally or effective picture narrows, replace new batteries.
- If battery fluid leaks, clean the battery case first and then replace new battery.

To power the unit, plug the power cord (included) into the AC Power Input on the back of the unit and a standard AC power outlet. For battery power, this unit requires 6 C-size, batteries (not included).



CD

Loading and Playing a CD

Note: This unit is not compatible with MP3 CDs.

1. Open the CD door and place a CD in the boombox, label side facing up.
2. Close the CD door.
3. Adjust the Source Switch to CD mode.
4. Press the Play/Pause button to begin playing the loaded disc.

Programming a CD

1. Press the **Stop** button to stop a loaded CD.
2. Press the **Program** button.
"01" will blink on the display.
3. Press the **Skip/Search** buttons to select a track.
4. Press the **Program** button to add the selected track to the program.
5. Repeat steps 3 and 4 to program up to 20 tracks to play in a specified order.
6. Press the **Stop** button to cancel a program.

RADIO

Radio Reception

An AM and FM antenna is built into the radio.

To improve radio reception, adjust the position of the boombox.

Playing the Radio

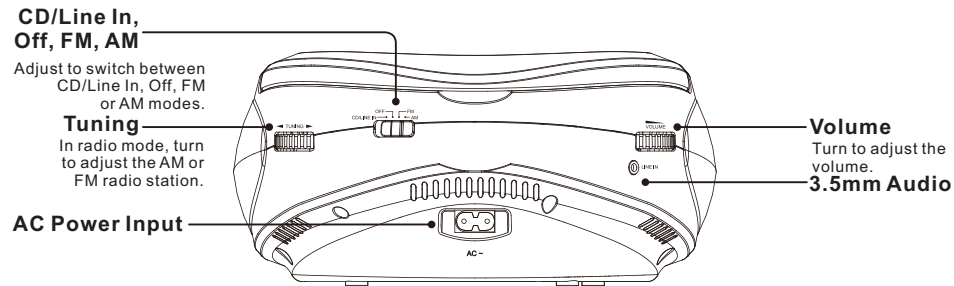
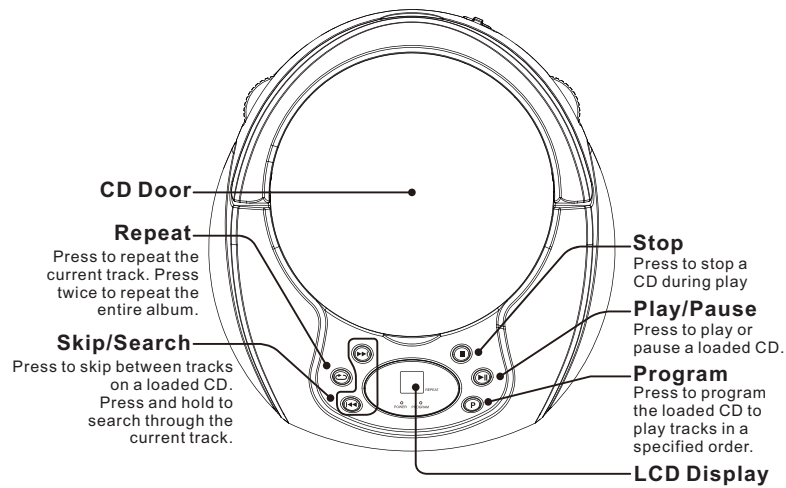
1. Slide the Source Switch switch to AM or FM radio mode.
2. Adjust the Tuning dial to tune the radio.

3.5 MM AUDIO INPUT

Using the Line In

3.5 mm audio input cable not included.

1. Plug one end of a 3.5 mm audio input cable into the **Line In** input on the back of the unit, and plug the other end of the cable into the audio output on an MP3 Player or other audio source.
2. Press the **Power** button to power the unit on.
3. Slide the **Source Switch** on the front of the unit to **Line In**.
4. Audio played through the connected device will now be heard through the speakers.



WARRANTY

THE MAIN TECHNICAL PARAMETER

Consumed Power:	12W
Disc Support:	CD/CD-R/CD-RW
FM:	87.5-108.0MHz
AM:	520-1710KHz
Power Supply:	AC~230-240V, 50Hz or DC 9V (UM-2)X6Batteries (Excluding Battery)
Temperature:	-10°C ~+45°C
Humidity:	15-75%(without the water drop)

TROUBLE SHOOTING

Breakdown guide

Before service, please inspect the question below

Phenomenon	Cause	Measurement
No power	Disconnect the power plug	Connect the power plug right
Don't work after being energized	No Disc	Put Disc into the CD player
No sound	Not connecting to the right jack	connecting to the right jack
	Disconnect the Audio Input lines	connect the Audio Input lines
	Equipment connected doesn't work or Volume is 0	Make Equipment connected work or turn the volume up

12 Month Warranty

Thank you for your purchase from Kmart.

Kmart Australia Ltd warrants your new product to be free from defects in materials and workmanship for the period stated above, from the date of purchase, provided that the product is used in accordance with accompanying recommendations or instructions where provided. This warranty is in addition to your rights under the Australian Consumer Law.

Kmart will provide you with your choice of a refund, repair or exchange (where possible) for this product if it becomes defective within the warranty period. Kmart will bear the reasonable expense of claiming the warranty. This warranty will no longer apply where the defect is a result of alteration, accident, misuse, abuse or neglect.

Please retain your receipt as proof of purchase and contact our Customer Service Centre on 1800 124 125 (Australia) or 0800 945 995 (New Zealand) or alternatively, via Customer Help at Kmart.com.au for any difficulties with your product. Warranty claims and claims for expense incurred in returning this product can be addressed to our Customer Service Centre at 690 Springvale Rd, Mulgrave Vic 3170.

Our goods come with guarantees that cannot be excluded under the Australian Consumer Law. You are entitled to a replacement or refund for a major failure and compensation for any other reasonably foreseeable loss or damage. You are also entitled to have the goods repaired or replaced if the goods fail to be of acceptable quality and the failure does not amount to a major failure.

For New Zealand customers, this warranty is in addition to statutory rights observed under New Zealand legislation.