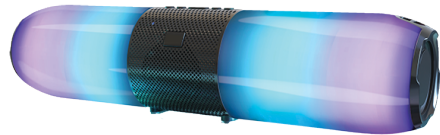


anko

BLUETOOTH® PORTABLE PARTY SPEAKER



Keycode:43031658

operation instruction



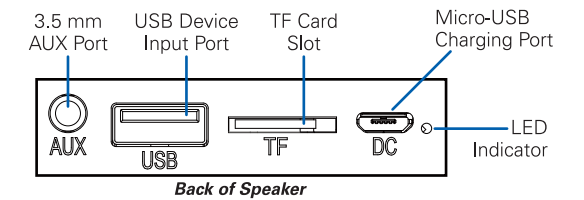
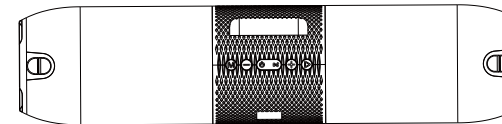
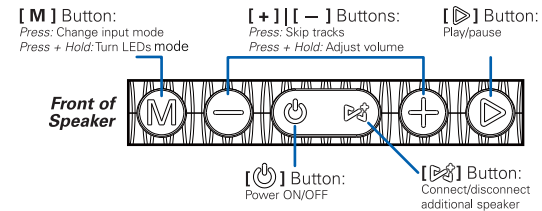
Avoids to use battery in following conditions:

- Battery cannot be subjected to high or low extreme temperatures, low air pressure at high altitude during use, storage or transportation.
- Replacement of a battery with an incorrect type that can result in an explosion or the leakage of flammable liquid or gas.
- Disposal of a battery into fire or a hot oven, or mechanically crushing or cutting of a battery, that can result in an explosion.
- Leaving a battery in an extremely high temperature surrounding environment that can result in an explosion or the leakage of flammable liquid or gas.
- A battery subjected to extremely low air pressure that may result in an explosion or the leakage of flammable liquid or gas.
- USB terminal is only to supply 500mA output when the battery is charged.
- Product's rating label is placed at the bottom enclosure.

Product feature :

- 8 lighting modes. Romantic colorful light.
- Bluetooth® version 5.1 , compatible with all audio devices with Bluetooth® function, as MP3/4, mobile, computer, ipad...
- Built-in rechargeable lithium battery.

Button and interface :



Operation manual:

Powering ON/OFF

- Press + hold the [⏻] button on the speaker to power ON and OFF.
- When powered ON, the speaker will enter Bluetooth pairing mode, and will automatically re-pair to any available previously-paired device nearby.

Adjusting Volume

In all modes, overall volume can be adjusted with the buttons on the speaker. In AUX and Bluetooth modes, volume can also be controlled by your connected device.

- Press + hold the [+] button to **increase** volume.
- Press + hold the [-] button to **decrease** volume.

Adjusting Playback

In Bluetooth, FM Radio, TF and USB modes, playback can be controlled by the buttons on the speaker.

- Press the [▶] to pause playback. Press again to resume.
- Press the [+] button to skip to the **next** track/station.
- Press the [-] button to skip to the **previous** track/station.

Changing Input Modes

Press the [M] button on the speaker to switch input modes.

A TF card or USB device must be inserted or connected to switch to these modes.

Pairing Two Speakers

1. Power both speakers ON at the same time.
2. Press the [▶] button on both speakers.
3. The speakers should pair to each other, and a tone will be heard. If the speakers do not pair to each other, try powering them OFF and following these instructions again.

Bluetooth Pairing

1. Power the speaker ON. A tone will be heard and the speaker will enter Bluetooth pairing mode.
2. Set your mobile device to search for Bluetooth devices. When the list appears, select **AR1071** from the found devices.
3. After a successful pairing, a tone will be heard and you will be able to play music on the speaker.

Using the AUX Input

Insert one end of a 3.5 mm auxiliary cable (not included) into the 3.5 mm AUX port on the speaker. Insert the other end into the headphone jack or 3.5 mm AUX output port on your media-playing device.

Switch input modes until you reach AUX mode.

In AUX mode, all playback will be controlled by your connected device.

Using the FM Radio

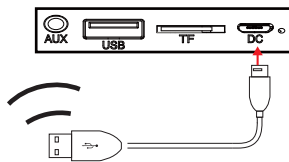
The USB charging cable must be plugged into the charging port, with the other end unplugged, in order to function as an antenna. See diagram at right.

Change input modes until you enter FM radio mode.

In FM radio mode, playback will be controlled by the buttons on the speaker.

- Press and hold the [▶] button to start scanning stations. Allow the radio to make a complete scan and save of all available radio stations, and return to the first saved station.

- Press the [+] and [-] buttons to skip through saved stations.



Using a TF Card or USB Device

To insert a TF card, insert a TF card into the TF card slot on the speaker with the metal contacts facing down, and push in until it clicks.

To insert a USB device, such as a USB flash drive containing audio files, insert the USB device into the USB device port on the speaker.

Change input modes until you enter TF or USB mode. The speaker will automatically begin playing music off the device. **Note:** You must have a TF card or USB device inserted to switch to TF or USB input mode.

In TF card and USB mode, all playback is controlled by the buttons on the speaker.

Packing accessories:

1. Bluetooth® Speaker
2. USB charging cable
3. Instruction manual

Warning

- DANGER: To reduce the risk of fire, do not immerse this product into water or under raining.
- WARNING: Please refer to the electrical compliance label before charging or operating the unit.
- WARNING: Product shall not be exposed to excessive heat such as direct sunshine, fire or under the wind shield.
- Do not place or store this product where it can fall or be pulled into a water source like a sink, tub, or pool while charging.
- If the product falls into water, unplug it immediately.
- Do not expose battery to extreme temperatures.
- Do not tamper or puncture battery.
- Do not use if the battery or any cords are damaged.
- Unplug your charger when not in use.
- Never try to repair this product yourself.
- When the unit is not in use, make sure it is correctly turned off and stored in a cool, dry place.

12 Month Warranty

Thank you for your purchase from Kmart.

Kmart Australia Ltd warrants your new product to be free from defects in materials and workmanship for the period stated above, from the date of purchase, provided that the product is used in accordance with accompanying recommendations or instructions where provided. This warranty is in addition to your rights under the Australian Consumer Law.

Kmart will provide you with your choice of a refund, repair or exchange (where possible) for this product if it becomes defective within the warranty period. Kmart will bear the reasonable expense of claiming the warranty. This warranty will no longer apply where the defect is a result of alteration, accident, misuse, abuse or neglect.

Please retain your receipt as proof of purchase and contact our Customer Service Centre on 1800 124 125 (Australia) or 0800 945 995 (New Zealand) or alternatively, via Customer Help at Kmart.com.au for any difficulties with your product. Warranty claims and claims for expense incurred in returning this product can be addressed to our Customer Service Centre at 690 Springvale Rd, Mulgrave Vic 3170.

Our goods come with guarantees that cannot be excluded under the Australian Consumer Law. You are entitled to a replacement or refund for a major failure and compensation for any other reasonably foreseeable loss or damage. You are also entitled to have the goods repaired or replaced if the goods fail to be of acceptable quality and the failure does not amount to a major failure.

For New Zealand customers, this warranty is in addition to statutory rights observed under New Zealand legislation.