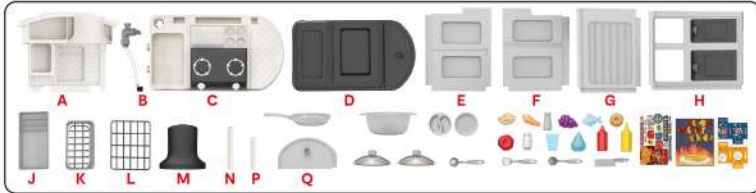


Assembly Instructions

3+ years

1. Component List



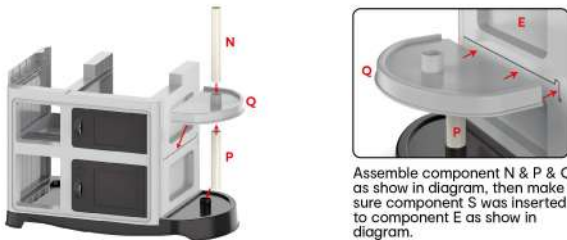
2. Assembly Instructions

Step 1



Assemble main body as show in diagram. Make sure component E & F & G were inserted to the right position as image show.

Step 2



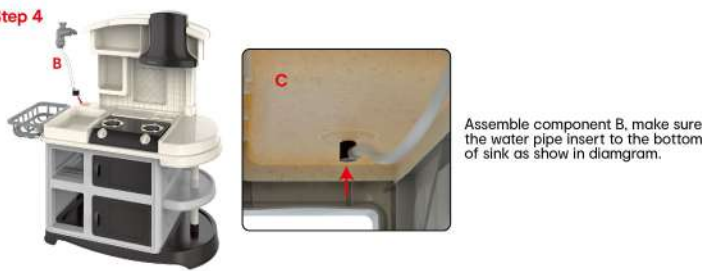
Assemble component N & P & Q as show in diagram, then make sure component S was inserted to component E as show in diagram.

Step 3



Assemble component G & F & E to component C, make sure every component was inserted to right position. Then assemble other component A & M & K as show in diagram.

Step 4



Assemble component B, make sure the water pipe insert to the bottom of sink as show in diagram.

Step 5



Inserted the card board to component C & D as show in diagram.

Step 6



The assembly is completed as shown in diagram.

Cautions

Keycode: 43039630

Instruction manual has to be kept since it contains important information.

<p>BATTERY INSTALLATION REQUIRES 3 X 1.5V AA BATTERIES (NOT INCLUDED)</p>	<p>WARNING: DISPOSE OF USED BATTERIES IMMEDIATELY. KEEP NEW AND USED BATTERIES AWAY FROM CHILDREN. IF YOU THINK BATTERIES MIGHT HAVE BEEN SWALLOWED OR PLACED INSIDE ANY PART OF THE BODY, SEEK IMMEDIATE MEDICAL ATTENTION.</p> <p>WARNING: BATTERIES ARE TO BE INSERTED WITH THE CORRECT POLARITY (+ AND -). DO NOT MIX DIFFERENT TYPES OF BATTERIES OR NEW AND USED BATTERIES. NON-RECHARGEABLE BATTERIES ARE NOT TO BE RECHARGED. RECHARGEABLE BATTERIES ARE ONLY TO BE CHARGED UNDER ADULT SUPERVISION. RECHARGEABLE BATTERIES ARE TO BE REMOVED FROM THE TOY BEFORE BEING CHARGED. THE SUPPLY TERMINALS ARE NOT TO BE SHORT-CIRCUITED OR BATTERIES FROM THE TOY ARE NOT TO BE FOR EXTENDED TIME OR WHEN BATTERIES BECOME EXHAUSTED. BATTERY INSTALLATION BY AN ADULT IS REQUIRED. DISPOSURE OF BATTERIES RESPONSIBLY IS NOT COVERED BY THIS TOY PRODUCER. FLASHES THAT MAY TRIGGER EPILEPSY IN SUSCEPTIBLE INDIVIDUALS.</p>	<p>WARNING: CHOKING HAZARD SMALL PARTS. NOT FOR CHILDREN UNDER 3 YRS.</p> <p>WARNING: THIS IS A TOY, INTENDED FOR ROLE PLAY ONLY. ADULT ASSEMBLY REQUIRED.</p> <p>WARNING: FOR SAFETY REASONS, REMOVE ALL TAGS, LABELS AND PLASTIC FASTENERS BEFORE GIVING THIS TOY TO YOUR CHILD.</p>
--	---	---