

OWNER'S MANUAL

PLEASE READ INSTRUCTIONS CAREFULLY BEFORE USING THIS PRODUCT.

43047215

Limbo Sprinkler

WARNING: ONLY FOR DOMESTIC USE.FOR OUTDOOR USE ONLY. USE ONLY UNDER ADULT SUPERVISION. KEEP AWAY FROM FLAMES AND FIRES. NOT SUITABLE FOR CHILDREN UNDER 36 MONTHS. SMALL PARTS PRESENT CHOKING HAZARDS. ADULT ASSEMBLY ONLY.

WARNING

1. Only for domestic use. Only for outdoor use.
2. The product shall not be installed over concrete, asphalt or any other hard surface.
3. Place the product on a level surface at least 2m from any structure or obstruction such as a fence, garage, house, overhanging branches, laundry lines or electrical wires.
4. Recommend back towards the sun when playing.
5. Keep assembly and installation instructions for further reference.
6. Before using the product, carefully check if there are any leaks or broken parts.
7. Do not play on stones, sticks or any sharp objects that may puncture the product.
8. Do not kick, throw or sit on the product.
9. Keep away from flames and fires.
10. Use only under competent supervision.
11. Adult assembly required.

NOTE: Air pump not included.

CLEANING AND MAINTENANCE

1. After use, use a damp cloth to gently clean all surfaces.

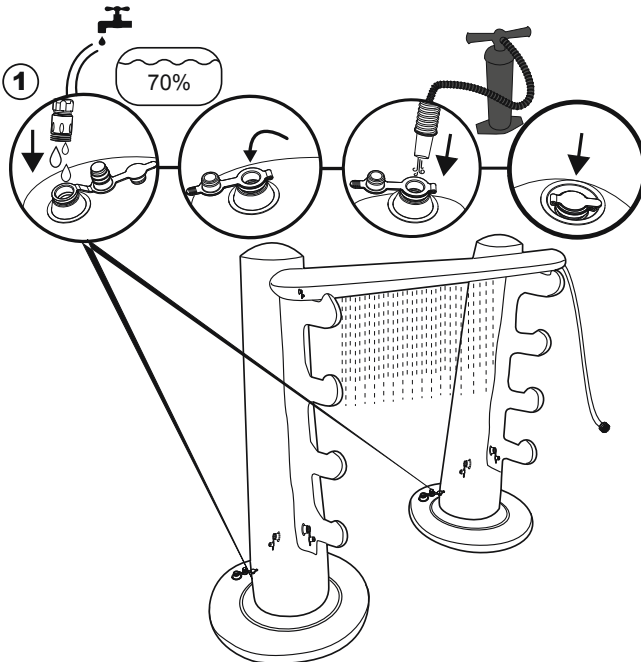
NOTE: Never use solvents or other chemicals that may damage the product.

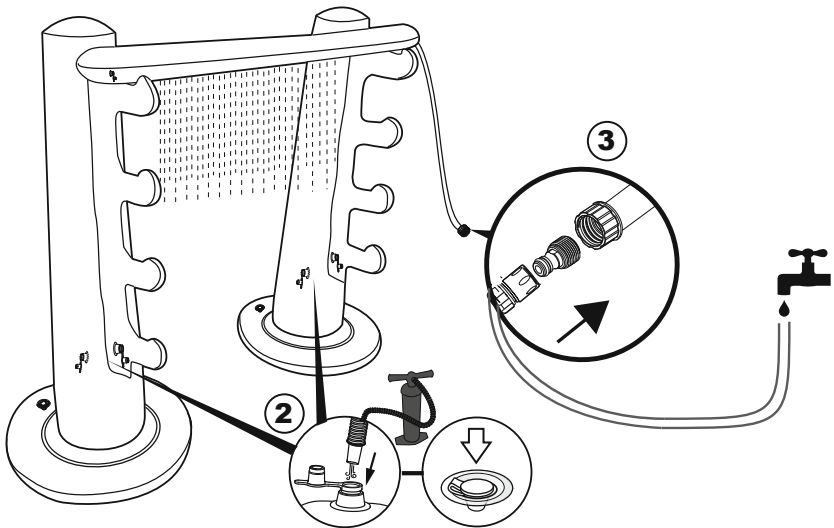
2. Store in a cool, dry place and out of children's reach.
3. Check the product for damage at the beginning of each season and at regular intervals when in use.

REPAIR

If a chamber is damaged, use the provided repair patch.

1. Completely deflate the product.
2. Clean and dry the damaged area.
3. Apply the provided repair patch and smooth out any air bubbles.





FOR AU / NZ: IMPORTED FOR KMART
STORES IN AUSTRALIA AND NEW ZEALAND.

©2021 Bestway Inflatables & Material Corp.

All rights reserved/Tous droits réservés/Todos los derechos reservados/Alle Rechte vorbehalten/Tutti i diritti riservati

Trademarks used in some countries under license from/

Marques utilisées dans certains pays sous la licence de/

Marcas comerciales utilizadas en algunos países bajo la licencia de/

Die Warenzeichen werden in einigen Ländern verwendet unter Lizenz der/

Marchi utilizzati in alcuni paesi concessi in licenza a

Bestway Inflatables & Material Corp., Shanghai, China

Manufactured, distributed and represented in the European Union by/

Fabriqué, distribués et représentés dans l'Union Européenne par/Fabricado, distribuido y representado en la Unión Europea por/

Hergestellt, vertrieben und in der Europäischen Union vertreten von/Prodotto, distribuito e rappresentato nell'Unione Europea da

Bestway (Europe) S.r.l., Via Resistenza, 5, 20098 San Giuliano Milanese (Milano), Italy

Distributed in Latin America by/Distribuí en América latine par/Distribuido en Latinoamérica por/Distribuído na América Latina por

Bestway Central & South America Ltda, Salar Ascotan 1282, Parque Enea, Pudahuel, Santiago, Chile

Distributed in Australia & New Zealand by **Bestway Australia Pty Ltd, Unit 2/98-104 Carnarvon St Silverwater, NSW 2128, Australia**

Tel: Australia: (+61) 29 0371 388; New Zealand: 0800 142 101

Distributed in United Kingdom by **Bestway Corp UK Ltd, 8 Wentworth Road, Heathfield Industrial Estate, Newton Abbot, Devon, TQ12 6TL**

Exported by/Exporté par/Exportado por/Exportiert von/Esportato da

Bestway (Hong Kong) International Ltd./Bestway Enterprise Company Limited

Suite 713, 7/Floor, East Wing, Tsim Sha Tsui Centre, 66 Mody Road, Kowloon, Hong Kong

Tel: +86 21 69135588 (For U.S. and Canada)

www.bestwaycorp.com

Bestway