

210mm

145mm

145mm

145mm

145mm

145mm

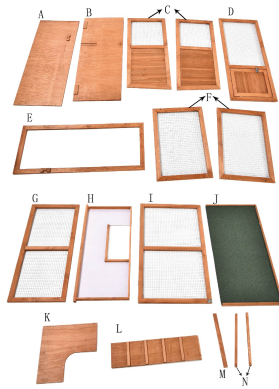
145mm

anko

Small Animal Pet Hutch & Run



Contents



C	15cm X 2pcs right latch
F	15cm X 2pcs left latch
G	55 X 34mm X 4pcs hinges (already attached on the top board (A))
K	Handle X 2pcs
S	Both x 1pcs
T	3.5x30mm Screws X 16pcs
U	3.5x25mm screws X 12pcs
V	3x12mm screws X 28pcs
W	2.5x12mm screws X 3pcs
X	3.5x16mm screws X 2pcs

Assembly Instructions

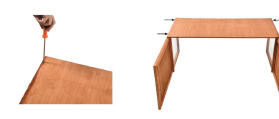
Step 1.

Put the wooden slat (N x 1pc) on board (C x 1pc) by following below, then connect the two by using screws (U x 2pc) with a screwdriver (not included). Please follow the guiding holes on the board. Repeat on the other wooden slat (N x 1pc) and board (C x 1pc).



Step 2.

Put board (A) on board (C x 2pcs) by following below, then connect the three boards by using screws (T x 4pcs) with a screwdriver (not included). Please follow the guiding holes on the board.



Step 3.

Put board (B) on board (C x 2pcs) by following below, then connect the three boards by using screws (U x 4 pcs) with a screwdriver (not included). Please follow the guiding holes on the board.



Step 4.

Put board (D) on board (C x 2pcs) by following below, then connect the three boards by using screws (T x 4pcs) with a screwdriver (not included). Please follow the guiding holes on the board.



Step 5.

Put board (E) on board (C x 2pcs) by following below, then connect the three boards by using screws (T x 4pcs) with a screwdriver (not included). Please follow the guiding holes on the board.



Step 6.

Connect boards (F x 1pc) and board (E x 1pc) by using screws (T x 2pcs) with a screwdriver (not included). Please follow the guiding holes on the board. Repeat on the opposite side.



Step 7.

Connect board (G) and board (F x 2pcs) by using screws (T x 4pcs) with a screwdriver (not included). Please follow the guiding holes on the board.



Step 8.

Put the wooden slat (M) into the slot on boards (A & L), then connect the step (L) and slat (M) by using screws (X x 2pcs) with a screwdriver (not included).



Step 9.

Insert the board (G) by following below image.



Step 10.

Place on the tray (S) by following below image. Then fasten the handles on the tray. Please follow the guiding holes on the board.



Step 11.

Put the board (I) on boards (F x 2pcs & G), and screw 2 hinges on to board (G) by using screws (V x 6pcs) with a screwdriver (not included). Please follow the guiding holes on the back.



Step 12.

Assemble the latch (D x 1pc) on the sideboard (F x 1pc) and top board (G) by using screws (V x 4pcs) with a screwdriver (not included). Please follow the guiding holes. Repeat on the opposite side and assemble the latch (P x 1pc) on the sideboard (F) and top board (G).



Step 13.

Connect the both and board (S) by using screws (W x 2pcs) with a screwdriver (not included).



Step 14.

Put on the lid (J) and screw 2 hinges on to the back of board (H) by using screws (V x 6pcs) with a screwdriver (not included). Please follow the guiding holes on the back.



Step 15.

Assemble the latch (D x 1pc) on the sideboard (C x 1pc) and top lid (J) by using screws (V x 4 pcs) with a screwdriver (not included). Please follow the guiding holes. Repeat on the opposite side and assemble the latch (P x 1pc) on the sideboard (C x 1pc) and top lid (J).



Step 16.

Open: please pull the lid up till the latch to 180 degrees, make sure the latch is locked before you put your pet in.



Close: please push the latch out as below on both sides before closing the lid.

WARNING:

For pet use only.
Supervise your pet during use.
For your pet's safety, inspect regularly and remove if damaged.
Do not sleep on the floor.
Do not sit or stand on this unit.
Do not lift when in use or with pet.

210mm