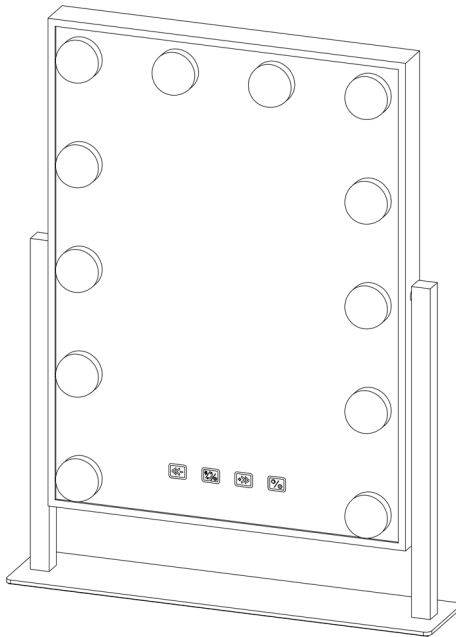


# anko

## Hollywood Mirror with Bluetooth

For Household Use Only



Model No.: DP330BT  
Rev 1



<b>1</b>	<b>Warnings</b> .....	<b>4</b>
<b>2</b>	<b>Safety Directions</b> .....	<b>4</b>
<b>3</b>	<b>Components</b> .....	<b>6</b>
<b>4</b>	<b>Power</b> .....	<b>7</b>
	4.1 Power Supply.....	7
	4.2 USB Charging .....	7
<b>5</b>	<b>Using the Mirror Lights</b> .....	<b>8</b>
	5.1 On / Off .....	8
	5.2 Dimmer .....	9
	5.3 Light Type .....	9
<b>6</b>	<b>Bluetooth Connection</b> .....	<b>10</b>
	6.1 Bluetooth Phone / Microphone Connection.....	10
	6.2 Bluetooth Music Track Control.....	11
	6.3 Bluetooth Music Volume Control .....	12
<b>7</b>	<b>Mirror Tilt</b> .....	<b>13</b>
<b>8</b>	<b>User Maintenance</b> .....	<b>13</b>
	8.1 Cleaning the Mirror.....	13
<b>9</b>	<b>Storage</b> .....	<b>13</b>
<b>10</b>	<b>Warranty Against Defect</b> .....	<b>15</b>

# 1 Warnings

Before using this appliance, read and follow all warnings and instructions in this manual, even if you are familiar with this product.

This appliance is not intended for use by persons (including children) with reduced physical, sensory or mental capabilities, or lack of experience and knowledge, unless they have been given supervision or instruction concerning use of the appliance by a person responsible for their safety.

Children should be supervised to ensure that they do not play with the appliance.

# 2 Safety Directions



Please read this instruction manual carefully before first use. It is advisable to keep this instruction manual for future reference.

**DO NOT** use in a moist or humid area.

**DO NOT** use the mirror if any of the LED globes are damaged.

**DO NOT** store or use the appliance near high temperature areas.

**DO NOT** run over the power supply cable with a vacuum cleaner.

**DO NOT** use if the appliance malfunctions, abnormal noise, smell, smoke, is dropped or damaged in any manner or any breakage is found during operation.

For electrical safety, any repairs to the product must be performed by a qualified electrical person only, or the product must be disposed of.

**DO NOT** misuse the power supply cable. Never pull the appliance by the cable or pull to disconnect it from the outlet. Instead, grasp the power supply body and pull to disconnect.

**DO NOT** use with damaged power supply cable or power supply body.

**DO NOT** handle the power supply or mirror with wet hands.

**DO** Keep power supply cable away from heated surfaces

**DO** disconnect the power supply from the power supply when not in use,

**DO NOT** hang items off the LED light globes.

**DO NOT** attempt to modify this product in any way.

Ensure the mirror is dry before adjusting the settings.

Use only on dry, level, indoor surfaces.

Use only as described in this manual.

Always store your appliance indoors in a cool dry area.

Ensure children and babies cannot play with plastic bags or any packaging materials.

Ensure to operate the power supply from a power source of the same voltage, frequency and rating as indicated on the product identification plate.

If this appliance is used by a third party, ensure to supply the instruction manual with it.

No liability can be accepted for any damage caused by non-compliance with these instructions or any other improper use or mishandling of the appliance.

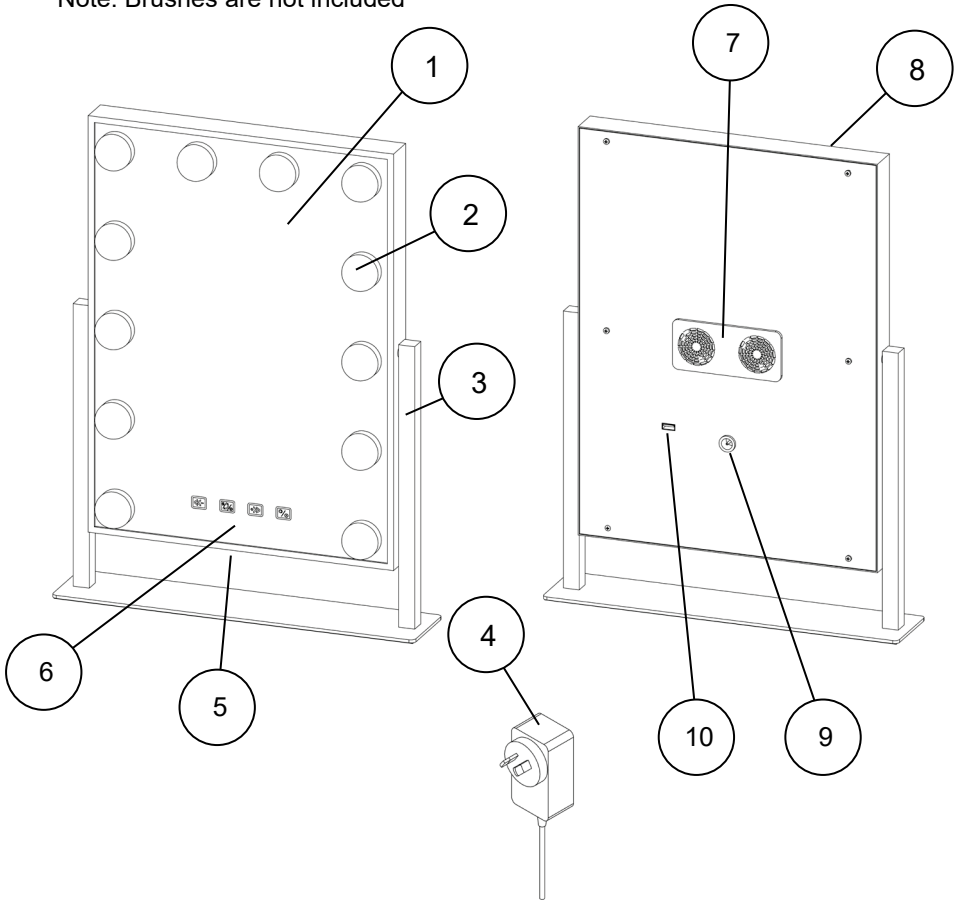
This product has not been designed for any uses other than those specified in this manual.

**ONLY** for domestic use. Industrial or commercial use invalidates the warranty.

## **Read and Save These Instructions**

### 3 Components

Note: Brushes are not included



1	Mirror	6	Control Touch Buttons
2	LED Lights	7	Rear Speaker
3	Base Stand	8	Mirror Frame
4	Power Supply Model CW1202000AU	9	Power Input
5	Microphone (underneath)	10	USB Power Out for Charging Phone

Note: The specifications and/or components of this appliance are subject to change without prior notice

## 4 Power

### 4.1 Power Supply

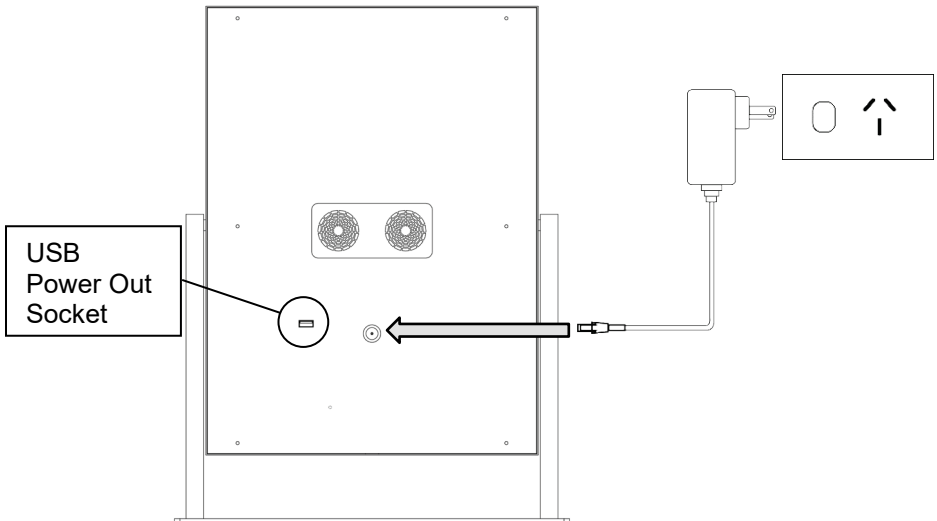
**Important:** Only use with Power Supply Model: CW1202000AU  
(Output: 12Vd.c. 2000mA)

Unravel the power supply cable.

Plug in the small plug on the end of the power supply cable into the power jack located in the back of the mirror.

Plug the power supply into the power point and switch on.

**IMPORTANT!** Switch off and remove the power supply from the power point when not in use.



### 4.2 USB Charging

The mirror is fitted with a USB power out for charging your phone.

Plug your USB cable into the USB socket and the other end into your phone.

Note: The Power Supply must be connected and switched on for your phone to charge.

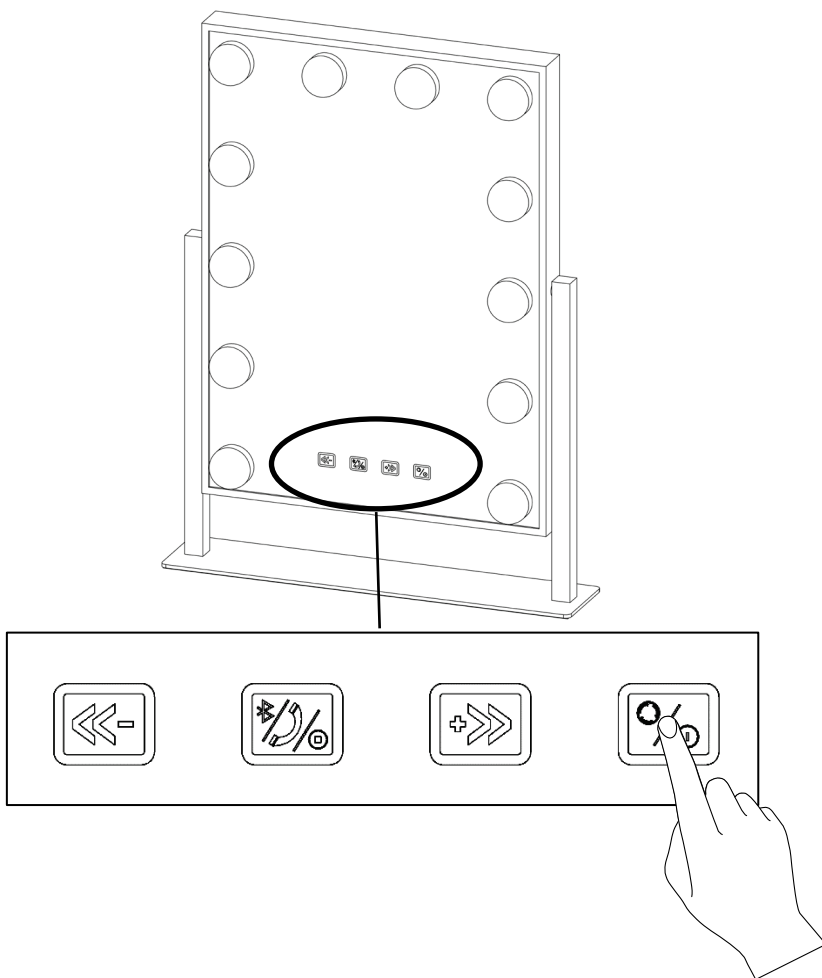
The USB connection is only for charging your phone. It cannot be used to play music through.

## 5 Using the Mirror Lights

### 5.1 On / Off

To Switch ON the lights, with the power supply plugged into the power point and switched on, and the power supply cable plugged into the back of the mirror, touch and release the On / Off Switch button on the mirror front.

The lights will turn on at full brightness.



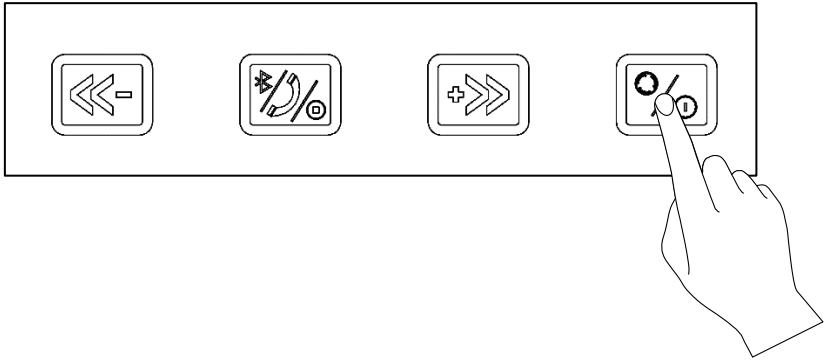
To Switch OFF the lights, touch and release the On / Off Switch button on the mirror front for 3 times.



## 5.2 Dimmer

To dim the lights, touch and hold the On / Off Switch Button to adjust the brightness to your requirement. Release the On / Off Switch Button when your desired brightness is reached.

To brighten the lights, touch and hold the On / Off Switch Button to increase the brightness. Release the On / Off Switch Button when your desired brightness is reached.

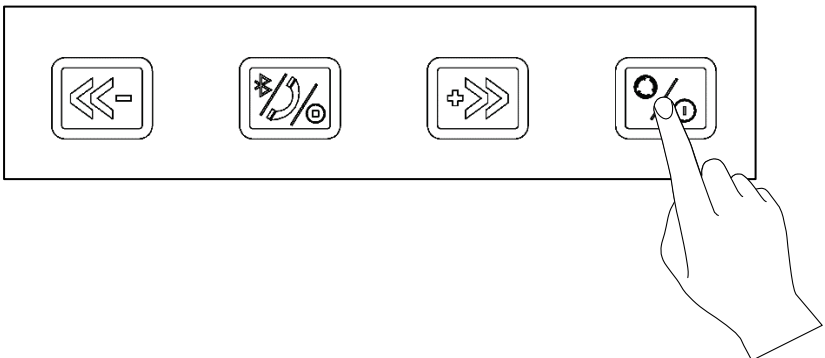


## 5.3 Light Type

There are three types of light you can choose from being Cool, Warm and Natural.

With the lights switched on, touch and release the On / Off Switch button on the mirror. The light type will change to Warm.

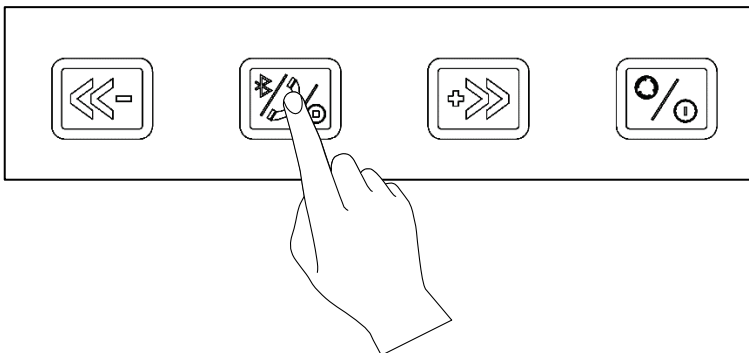
Each touch and release of the On / Off Switch button will cycle the light type around from Cool to Warm to Natural to OFF.



## 6 Bluetooth Connection

Turn on Bluetooth on your phone and start search for Bluetooth devices. Note: If you are not sure how to do this, please refer to your phone's instruction manual

Touch and hold the BT/phone/Stop icon button and release when it starts to blink Blue Colour.

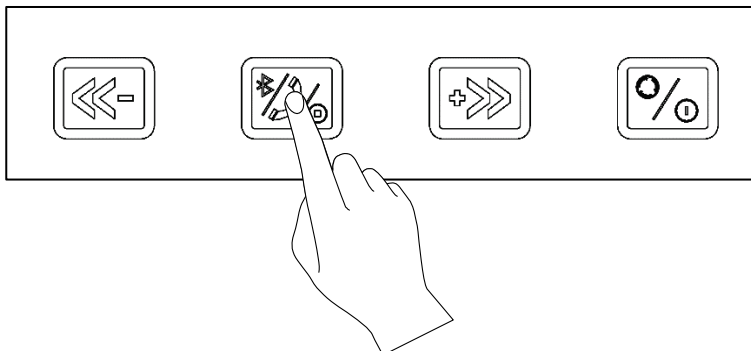


When your phone sees the “Hollywood mirror with BT”, select it to connect.

The BT/phone/Stop icon button will turn Red indicating you are now connected.

### 6.1 Bluetooth Phone / Microphone Connection

When your phone is connected to the mirror via Bluetooth, and the button is Red, if you receive an incoming phone call, the button will blink blue colour. Press this button to answer the phone call.



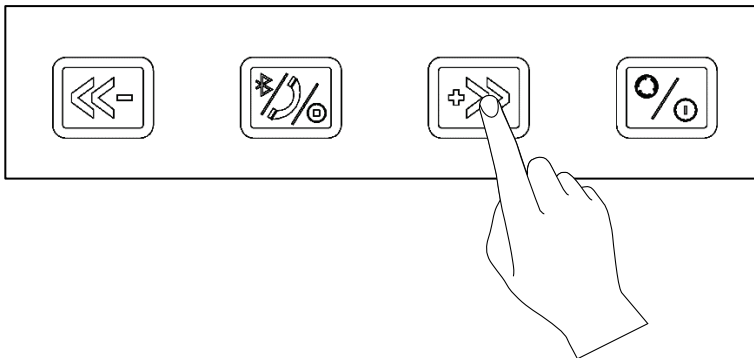
There is a microphone located at the bottom of the mirror frame which allows handsfree operation.

To cancel the call / hang up, press the button and the call will end. The button will return to Red colour.

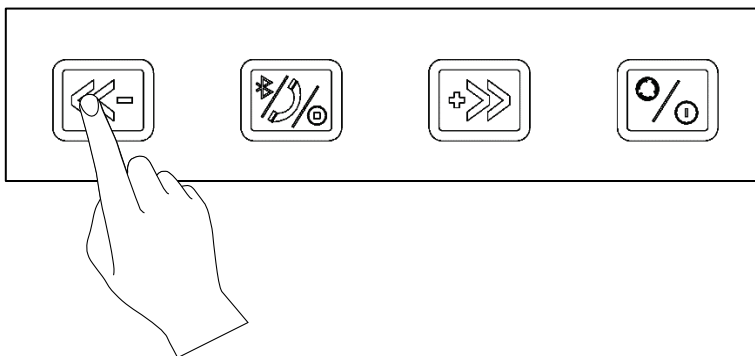
## 6.2 Bluetooth Music Track Control

When your phone is connected to the mirror via Bluetooth, and the button is Red, start your music file playing (on your phone) and the button will blink blue colour and start to play the music through the rear speakers on the mirror.

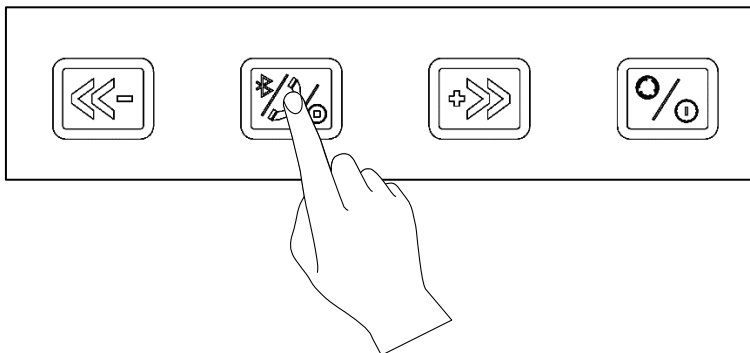
While the music track is playing, you can touch and release the >> button to advance to the next music track.



Touch and release the << button to go back to the beginning of the track, or touch and release again (quickly) to go back to the previous music track.



To stop the music playing, touch the BT/phone/Stop icon button and the music will stop.



The button will return to Red colour.

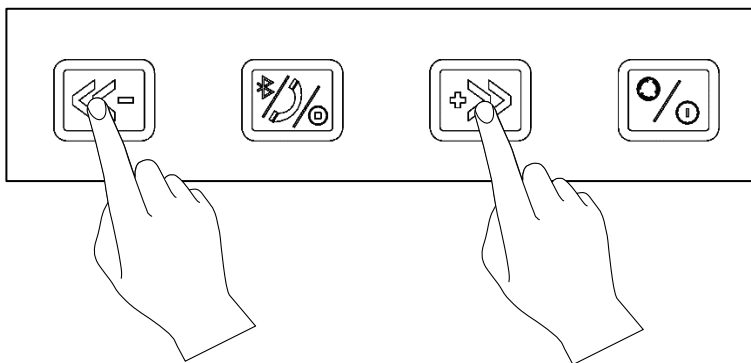
Touch and release the BT/phone/Stop icon button and the music will start to play again

### 6.3 Bluetooth Music Volume Control

While the music track is playing, you can touch and hold the (+) >> button to increase volume. Two beeps will be heard when the volume is at maximum setting.

Touch and hold the (-) << button to reduce volume.

Two beeps will be heard when the volume is at minimum setting



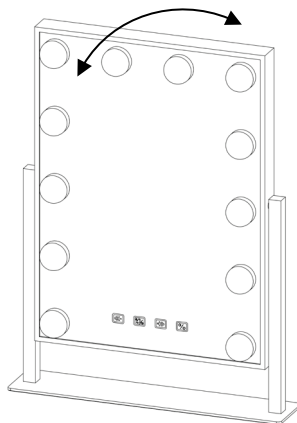
## 7 Mirror Tilt

The mirror is attached to the base stand by two swivel hinges.

This allows you to tilt the mirror up or down to you desired position.

To tilt, grasp the top of the mirror and either pull forward to tilt down, or push backward to tilt up.

The mirror will remain in the desired position.



## 8 User Maintenance

**WARNING:** Switch off and unplug the power supply before any maintenance or cleaning.

**Note:** the LED lights are not removable or replaceable. They are designed to last for the life of the product.

### 8.1 Cleaning the Mirror

**Do not** clean the mirror or other parts with petrol, solvents or any other flammable liquid.

**Do not** clean with scouring pads, rough cloths or the like as the surface will be damaged.

Use only a very soft dry cloth to gently wipe the mirror and other parts.

**Do Not** submerge the mirror or other parts in liquid.

## 9 Storage

If you are to store the mirror, store it away in a dry cool place preferably in its box.

Do not wind the power supply cable tightly. Loop it loosely.



## 10 Warranty Against Defect

### 12 Month Warranty

Thank you for your purchase from Kmart.

Kmart Australia Ltd warrants your new product to be free from defects in materials and workmanship for the period stated above, from the date of purchase, provided that the product is used in accordance with accompanying recommendations or instructions where provided. This warranty is in addition to your rights under the Australian Consumer Law.

Kmart will provide you with your choice of a refund, repair or exchange (where possible) for this product if it becomes defective within the warranty period. Kmart will bear the reasonable expense of claiming the warranty. This warranty will no longer apply where the defect is a result of alteration, accident, misuse, abuse or neglect.

Please retain your receipt as proof of purchase and contact our Customer Service Centre 1800 124 125 (Australia) or 0800 945 995 (New Zealand) or alternatively, via Customer Help at [Kmart.com.au](http://Kmart.com.au) for any difficulties with your product. Warranty claims and claims for expense incurred in returning this product can be addressed to our Customer Service Centre at 690 Springvale Rd, Mulgrave Vic 3170.

Our goods come with guarantees that cannot be excluded under the Australian Consumer Law. You are entitled to a replacement or refund for a major failure and compensation for any other reasonably foreseeable loss or damage. You are also entitled to have the goods repaired or replaced if the goods fail to be of acceptable quality and the failure does not amount to a major failure.

For New Zealand customers, this warranty is in addition to statutory rights observed under New Zealand legislation.

### **IMPORTANT!**

**For all technical queries or difficulties in operating the product and for spare parts, contact H.E. Group customer service 1300 105 888 (Australia) and 09 8870 447 (New Zealand).**

