

anko

Steam Cleaner

WJ518

User Manual



**PLEASE READ AND SAVE THESE
INSTRUCTIONS FOR FUTURE REFERENCE**


IMPORTANT SAFEGUARDS

When using any electrical product, always follow these basic safety precautions:



READ ALL INSTRUCTIONS BEFORE USE.

- Do not direct steam at people, animals or at electrical devices.
- Do not operate machine without water in the tank.
- Do not allow machine to run unattended at any time.
- Close supervision is necessary when this machine is used near children. Do not allow it to be used as a toy.
- The machine is designed for household use only, do not expose to rain.
- Do not overfill the water tank. The machine contains a maximum of 1200ml of water only. Excessive filling of the water tank may cause injury or damage.
- Never turn the machine over or tilt more than 45° when it is switched ON or if it's still producing steam.
- Never use this machine to clean electronic devices or installations.
- Do not run steam cleaner for more than 1 hour at a time.
- Use extra care when cleaning on stairs.
- Do not immerse cord, plug or machine in water or any other liquid.
- Do not operate with a damaged cord. If the power cord is damaged or any improper performance of this machine occurs it should be repaired by a qualified electrician only.
- Keep hair, loose clothing, fingers, feet and all parts of your body away from the jet of steam. Do not operate machine in bare feet or when wearing open toe shoes or sandals.
- Do not pull or carry by the cord, use cord as a handle, close door on cord or pull cord around sharp edges or corners. Keep cord away from heated surfaces.
- Unplug cleaner when not in use. Turn all controls off before unplugging from mains.
- Do not unplug by pulling on cord. Always grasp from the plug, not the cord. Never handle plug or appliance with wet hands.
- Store in a dry place. Do not expose machine to freezing temperatures.
- Do not try to repair the appliance yourself. For electrical safety, do not use if the power cord is damaged or shows any signs of wear and tear. Power cord should be replaced by a qualified electrical person only or the product must be disposed.
- Use only accessories supplied with the product.
- Regularly check the appliance and the cable. DO NOT switch the appliance ON if it is damaged.
- **If there is a lot of steam emitting from the fill cap, switch OFF the cleaner immediately and disconnect from mains power.**
- If the supply cord is damaged, it must be replaced by the manufacturer, its service agent or similarly qualified person in order to avoid a hazard.
- This appliance is not intended for use by persons(including children)with reduced physical, sensory or mental capabilities, or lack of experience and knowledge, unless they have been given supervision or instructions concerning use of the appliance by a person responsible for their safety.
- Children should be supervised to ensure that they do not play with the appliance.
- The liquid or steam must not be directed towards equipment containing electrical components, such as the interior of an oven.

- For instructions for safe refilling of the water container, please refer to “REFILLING THE WATER TANK” section.
- For explanation of symbol IEC 60417-5597 , please refer to “REFILLING THE WATER TANK” section.
- This machine must only be used by adults, not by children, and must only be used by those who are capable of understanding Care and User instructions.
- NEVER open the Pressure Cap during use. The Pressure Cap get hot in use; handle with caution. Always follow instructions and safety warnings in this manual.
- The appliance has to be unplugged after use and before carrying out **user maintenance** on the appliance.

**SAVE THESE INSTRUCTIONS
FOR HOUSEHOLD USE ONLY**

KNOW YOUR STEAM CLEANER



- | | |
|-----------------------|--|
| 1. Water tank | 13. Snap on extension wands |
| 2. Pressure cap | 14. Floor brush |
| 3. Carry handle | 15. Adaptor for floor brush |
| 4. On/Off button | 16. Adaptor for accessories |
| 5. Steam indicator | 17. Fabric steamer |
| 6. Power indicator | 18. Window and tile squeegee |
| 7. Accessories store | 19. Multi-purpose round brushes |
| 8. Fixed steam hose | 20. High pressure nozzle |
| 9. Steam gun | 21. Extra rubber seal - 5 pieces |
| 10. Steam trigger | 22. Fabric steamer covering - 2 pieces |
| 11. Red safety button | 23. Mop for floor brush - 2 pieces |
| 12. Wheels | 24. Funnel |

IMPORTANT!

Please make sure that your appliance is received with the right components shown above. Check everything carefully before use. If any part is missing or damaged, do not use. Return the product to Kmart for replacement.

HOW TO USE THE ACCESSORIES

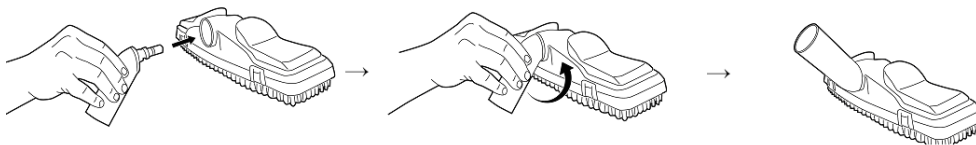
The accessories provided allow you to use the power of steam to blast away grease, grime, mildew, scum, kill dust mites, fleas and harmful germs, all with minimum effort using the accessories supplied - all without the use of chemicals.

Extension wands (13)

Two extension wands allow you to select various lengths for comfortable use, reducing the need to bend while enabling you to reach high places.

Floor Brush (14)

The floor brush should be used in combination with the adaptor (15). Use with extension wands (13) for floor and carpet cleaning. It has spring loaded clips to hold the mop (23). It has brush bristles to loosen



dirt and open fibers for steam to penetrate.

Squeegee (17, 18)

Use on mirrors, windows or other smooth surfaces. Steam loosens surface dirt and the rubber blade on the squeegee scrapes it clean. Attach the squeegee to the steam gun (9) using adaptor (16). Cover the fabric steamer (17) with covering (22) to trap and absorb dirt from sensitive cleaning surfaces.



Round Brushes (19)

These small round brushes should be used in combination with the adaptor (16), fitted on the steam gun (9). Essential for cleaning small hard to reach areas. Use on tile grout, grates, grills and bathroom fittings.

High Pressure Nozzle (20)

Allows for concentrated high pressure steam flow. Attach the nozzle to the steam gun (9) using adaptor (16).

Mop for floor brush (23)

Machine washable when dirty. Easily fits to the floor brush via spring loaded clips. The mop is designed to lift, trap and absorb dirt from sensitive cleaning surfaces, leaving surfaces clean and sanitized.



Funnel (24)

The funnel ensures no mess when filling the tank. Always use the funnel when filling water.

WARNING!

Please read carefully. Important safety instructions!

DO NOT switch this machine on or attempt to use it without water in the tank.

NEVER operate without the pressure cap screwed tightly in place.

CAUTION!

Cleaning Fabrics:

A number of materials and fabrics are NOT suitable to be cleaned by steam for example: Do not use on leather, wax polished furniture or wooden floors, synthetic fabrics, velvet, Dralon or other delicate, steam sensitive materials. Always follow manufacturer's product specific cleaning instructions to avoid damage from steam and heat. If unsure if steam can be used for cleaning DO NOT use.

Cleaning Glass/Mirrors:

Thermal shock can also shatter glass. Before cleaning glass surfaces, carefully warm the surface by directing the steam jet on the glass from a distance of no less than 15cm. Do not direct hot steam directly on glass, this can shatter the glass.

CAUTION!

We recommend:

You test in a hidden area before cleaning for color fastness and fabric sensitivity. If color or appearance is affected DO NOT proceed to steam clean. Always follow manufacturer's cleaning instructions to avoid damage from steam and heat.

USE YOUR STEAM CLEANER

- Make sure the machine is unplugged from the mains power outlet socket.
- Unscrew the pressure cap (2) by turning it anti clockwise.
- Using the funnel (24), fill the machine with 1200ml clean water. This should be sufficient to steam clean for approximately 1 hour.

IMPORTANT! always ensure there is 200-1200ml clean water in the tank.

- Replace the safety cap by turning clockwise and fasten tightly.
- Attach necessary accessories to the appliance according to your cleaning requirements. Ensure all the accessories are firmly connected before cleaning.
- Connect the power cord plug into a mains power outlet socket and push the On/Off button to switch ON. Two lights will illuminate. The red light (5) is a power indicator. The orange light (6) indicates that the machine is building up steam pressure. It takes around 8 minutes to reach the exact pressure depending on the amount of water in the tank.



NOTE: Always removes dust from the surface before cleaning.

CAUTION! DO NOT attempt to attach or disassemble any accessories while the machine is still hot. Never remove the cleaning cloth whilst the safety trigger is released or the machine is hot to the touch.



Warning - risk of injury!

- Once the orange light goes OFF, the appliance is ready to use.
- Press Red Safety button (11) to “ON” position. Pressing the steam trigger (10) will release steam from the steam gun.
- If you want steam to continuously spray out without pressing the steam trigger (10), press and hold the steam trigger, and press down the “OFF/LOCK” end on the red safety lock.
- Always release the steam trigger with the red safety lock at “OFF/LOCK” position to turn OFF continuous steam from the steam gun.
- When the orange light illuminates again during use, release the safety trigger and allow the steam pressure to build up once again. It will take around 40 seconds. If the safety trigger is pressed when the orange light is on, hot water may come out of the machine instead of steam.

REFILLING THE WATER TANK

- Switch the appliance OFF by pressing the ON/OFF button (4).
- Disconnect the power cable from the mains power outlet socket. **Wait for 10 minutes.**
- Squeezing the steam trigger to make sure that the machine is no longer under pressure before unscrewing the pressure cap. **DO NOT** unscrew the safety cap until the steam has stopped.
- Fill the water tank using the funnel provided.

DO NOT fill exceed 1200ml water. DO NOT fill less than 200ml water.

- Replace and fasten the pressure cap by turning it clockwise.
- You are now ready to switch the machine ON and resume steam cleaning.

If you live in area with hard water, it is best to use distilled water (this will prevent build-up of lime scale in the steam cleaner and prevent damage to the steamer).



Warning - risk of injury!

Warning! The pressure cap gets hot during use, handle with caution.

TROUBLESHOOTING

PROBLEMS	POSSIBLE REASONS & SOLUTIONS
Water comes out of the nozzle	The Steam Cleaner develops a massive amount of steam. This may condense as water or water droplets in the steam hose and tools and nozzle, which are then expelled when used after a period of cooling. This is normal and not a cause for concern.

No steam comes out	Check in case the hose has become kinked or blocked, or that you have not run out of water and there is mains power supplied to the steamer.
I can't get the pressure cap off	Make sure that you have fully de-pressurized the boiler See the section REFILLING THE WATER TANK.
Steam flow is erratic; sometimes it works really well, sometimes not so good	If you have not used pure water, you may have a small blockage inside your Steam Cleaner.
I have hard water where I live and used boiled water from the kettle to fill the water tank. I have left water in the boiler after use, now my Steam Cleaner doesn't work well at all.	Actually, you have made matters worse because boiled water concentrates the minerals that form lime scale rather than boiling them away. Water left in the boiler will go off and may create a reaction with the boiler and/or the steam hose. So, ALWAYS empty the machine after use and NEVER use boiled water. To prolong the life of the steamer we recommend using distilled water to fill the water tank.

CLEANING AND STORAGE

- Clean the steam cleaner after each use.
- Remove the power cord from the power outlet socket and ensure the appliance is thoroughly cooled before cleaning.
- Clean the appliance and accessories with a damp cloth or sponge. Wipe dry with a soft dry cloth.
- Wash the fabric steam covering and mop in warm, soapy water, and then rinse and dry thoroughly.
- Make sure all components are clean and dried thoroughly before storing.
- Store the appliance in a clean and dry location. Do not place anything on top. Store the accessories alongside the appliance where they will not be damaged and won't cause a hazard.

TECHNICAL SPECIFICATION

Voltage: 220-240V~ 50-60Hz

Power: 1500W

Water tank capacity: 1.2L

12 Month Warranty

Thank you for your purchase from Kmart.

Kmart Australia Ltd warrants your new product to be free from defects in materials and workmanship for the period stated above, from the date of purchase, provided that the product is used in accordance with accompanying recommendations or instructions where provided. This warranty is in addition to your rights under the Australian Consumer Law.

Kmart will provide you with your choice of a refund, repair or exchange (where possible) for this product if it becomes defective within the warranty period. Kmart will bear the reasonable expense of claiming the warranty. This warranty will no longer apply where the defect is a result of alteration, accident, misuse, abuse or neglect.

Please retain your receipt as proof of purchase and contact our Customer Service Centre on 1800 124 125 (Australia) or 0800 945 995 (New Zealand) or alternatively, via Customer Help at Kmart.com.au for any difficulties with your product. Warranty claims and claims for expense incurred in returning this product can be addressed to our Customer Service Centre at 690 Springvale Rd, Mulgrave Vic 3170.

Our goods come with guarantees that cannot be excluded under the Australian Consumer Law. You are entitled to a replacement or refund for a major failure and compensation for any other reasonably foreseeable loss or damage. You are also entitled to have the goods repaired or replaced if the goods fail to be of acceptable quality and the failure does not amount to a major failure.

For New Zealand customers, this warranty is in addition to statutory rights observed under New Zealand legislation.