

4+
YEARS

CONTENTS:

1 base, 1 caterpillar, 4 tweezers,
28 Coloured Balls, 1 Sticker Sheet

DANCING CATERPILLAR

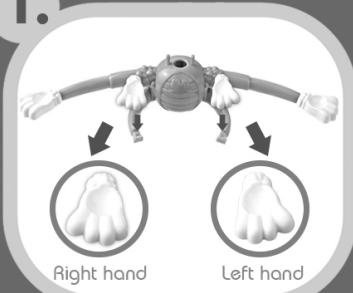
OBJECT OF THE GAME:

The first one to successfully place all of their coloured balls in their section of caterpillar's hands will be the winner.

SET UP:

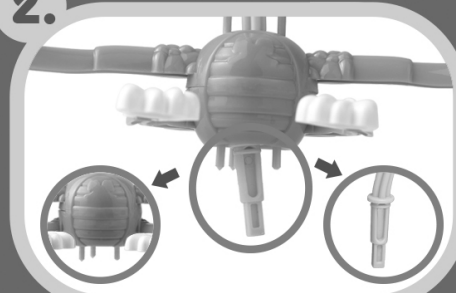
Instructions of Insect Body Installation:

1.



1. When installing the palm, pay attention to the left and right palms, and install all the palms of the 6-segment body.

2.



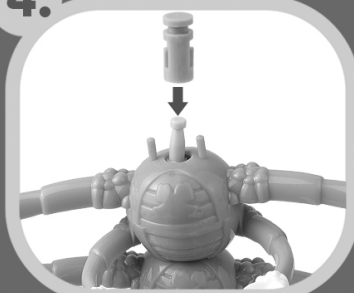
2. Install the first segment of the body (with three yellow prongs) to the central axis, pay attention to the direction of the central axis, the three yellow prongs as circled in image should be downward.

3.



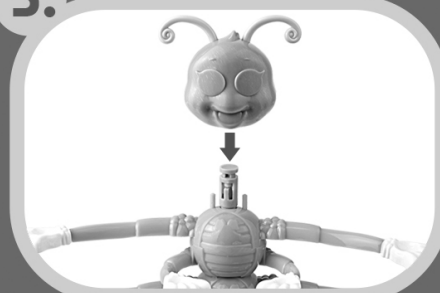
3. Install the second to fifth segments of the body.

4.



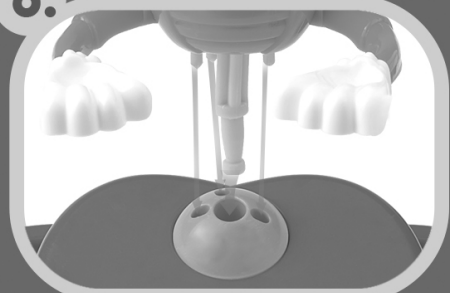
4. Cover with the gadget lid to fasten the body.

5.



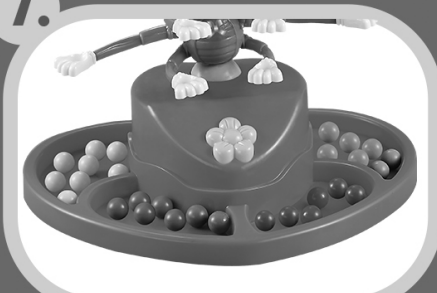
5. Install the head.

6.



6. Place the caterpillar into the base.

7.



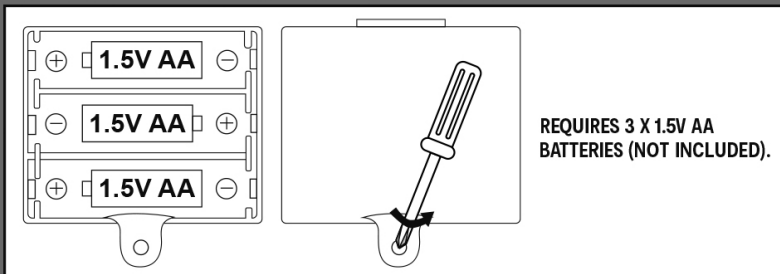
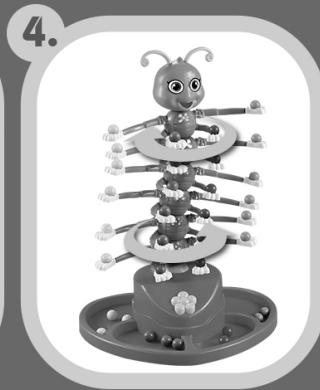
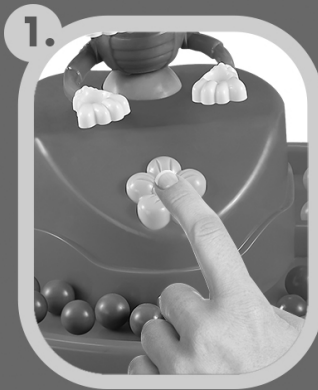
7. Place the coloured balls into the four sections of the base, separated by colour.



- When playing for the first time, attach the bow tie and eye stickers to caterpillar.

PLAYING THE GAME:

1. To start the game and get the Dancing Caterpillar moving, press button on the Caterpillar. (Press again if you want to turn the game off).
2. When the race is on, place your coloured balls in the hands above your base section by using the tweezers and work your way to the top.
3. You must pick up any of your coloured balls that the Dancing Caterpillar drops before you continue.
4. The game unit will randomly rotate 360 degrees during play.



1. Unscrew to open the battery compartment.
2. Insert batteries into the correct + and - polarities.
3. Close the cover.

WARNING: BATTERIES ARE TO BE INSERTED WITH THE CORRECT POLARITY (+ AND -). DO NOT MIX DIFFERENT TYPES OF BATTERIES OR NEW AND USED BATTERIES. NON-RECHARGEABLE BATTERIES ARE NOT TO BE RECHARGED. RECHARGEABLE BATTERIES ARE ONLY TO BE CHARGED UNDER ADULT SUPERVISION. THE SUPPLY TERMINALS ARE NOT TO BE SHORT-CIRCUITED. REMOVE BATTERIES FROM THE TOY WHEN NOT IN USE FOR AN EXTENDED TIME OR WHEN BATTERIES BECOME EXHAUSTED. BATTERY INSTALLATION BY AN ADULT IS REQUIRED. DISPOSE OF BATTERIES RESPONSIBLY. DO NOT DISPOSE OF IN FIRE.

WARNING: CHOKING HAZARD
SMALL PARTS AND SMALL BALLS. NOT FOR CHILDREN UNDER 3 YRS.

WARNING: FOR SAFETY REASONS, REMOVE ALL TAGS, LABELS, AND PLASTIC FASTENERS BEFORE GIVING THIS TOY TO YOUR CHILD.

ADULT ASSEMBLY AND SUPERVISION REQUIRED.
PRODUCT MAY VARY SLIGHTLY FROM THE IMAGE SHOWN.
PLEASE KEEP PACKAGING FOR FUTURE REFERENCE.

MADE IN CHINA
FOR AU / NZ: IMPORTED FOR KMART
STORES IN AUSTRALIA AND NEW ZEALAND.