

anko

Front Load Drum-type Washing Machine 6kg & 7.5kg Instruction Manual



Model no: AFLW60G & AFLW75G
Rev: 03

To ensure proper operation of this device, please read this instruction manual carefully before using the device and keep it for future reference.

Purchase Details

For future reference, please record the following information which can be found on the rating plate and the date of purchase which can be found on your sales invoice.

STORE DETAILS

STORE NAME | _____

ADDRESS | _____

TELEPHONE | _____

PURCHASE DATE | _____

PRODUCT DETAILS

MODEL NO. | _____

SERIAL NO.* | _____

| | | |
|-----------------|-----------|-----------------------------------|
| Contents | 2 | Purchase Details |
| | 4 | Safety Instructions |
| | 6 | Installation |
| | 8 | Your Washing Machine |
| | 10 | Quick Start Guide |
| | 11 | Operating Instructions |
| | 16 | Cleaning & Maintenance |
| | 19 | Troubleshooting |
| | 20 | Technical Specifications |
| | 21 | Testing Notes |
| | 22 | Warranty |

Safety Instructions

CONDITIONS OF USE

- › This appliance is intended to be used in household and similar applications such as farm houses or by customers in serviced apartments, holiday apartments and other residential type environments.

SAFETY INSTRUCTIONS

- › Before the installation and use of the appliance, carefully read the supplied instructions.
- › The manufacturer is not responsible if an incorrect installation and use causes injuries and damages.
- › Always keep the instructions with your appliance for future reference.

WARNING: To prevent any damages to your and others' life or property, you have to follow the safety notes.

WARNING: Caution, risk of fire!

CHILDREN & VULNERABLE PEOPLE SAFETY

WARNING: Risk of suffocation, injury or permanent disability.

- › This appliance can be used by children aged from 8 years and above and persons with reduced physical, sensory or mental capabilities or lack of experience and knowledge if they have been given supervision or instruction for the operation of the appliance by a person who is responsible for their safety.
- › Do not let children play with the appliance.
- › Keep all packaging away from children.
- › Keep all detergents away from children.
- › Keep children and pets away from the appliance door when it is open.
- › Cleaning and user maintenance shall not be made by children without supervision.

INSTALLATION

- › Remove all the packaging.
- › Do not install or use a damaged appliance.
- › Obey the installation instruction supplied with the appliance.
- › Make sure that the floor where you install the appliance is flat, stable, heat resistant and clean.

- › Always remove the plug and turn off the water supply to the appliance after every use.
- › Sharp and rigid items such as coins, nails and screws may cause serious damage to this appliance- always ensure pockets of clothing are empty.
- › Always ensure that the drum has drained all water before opening the appliance door. If water is visible, do not open the appliance door.
- › Do not install the appliance behind a lockable door, a sliding door or a door with a hinge on the opposite side, where the appliance door cannot be fully opened.
- › Always be careful when you move the appliance because it is heavy. Always wear safety gloves.
- › Always move the appliance vertically.
- › The rear surface of the appliance must be put against the wall.
- › This appliance should not be installed in a bathroom or similar wet rooms, as well as rooms with explosive or caustic gases.
- › Washing machines with a single water inlet and should only be connected to the cold water supply outlet. Models featuring two inlet valves can be connected to both the hot and cold water outlets.
- › The appliance can be installed as freestanding or below the kitchen counter with correct space.
- › When the appliance is put in its permanent position, check if it is fully level with the aid of a spirit level. If it is not, adjust the feet until it is.

ELECTRICAL CONNECTION

WARNING: Caution, risk of fire and electrical shock!

- › The appliance must be earthed.
- › Make sure that the electrical information on the rating plate agrees with the power supply. If not, contact an electrician.
- › Always use a correctly installed shockproof socket.
- › Do not use multi-plug adapters and extension cables.

Safety Instructions (Continued)

- › Make sure not to cause damage to the mains plug and to the mains cable. Should the appliance power supply cable need to be replaced, this must be carried out by our Service Centre.
- › Connect the mains plug to the mains socket only at the end of the installation. Make sure that there is access to the mains plug after the installation. Do not connect the appliance plug with a power connection board.
- › Do not pull the mains cable to disconnect the appliance. Always pull the mains plug.
- › Do not touch the mains cable or the mains plug with wet hands.
- › This appliance complies with the E.E.C. Directives.
- › Do not climb up or sit on top of the appliance.
- › Do not change the specification of this appliance.
- › If you use fabric softener or similar products, obey the instructions on the packaging.
- › Do not sit or stand on the open door.
- › Obey the maximum load volume of 7.5 kg (refer to the “Program chart” chapter).
- › Ensure all objects are removed from clothing pockets such as lighters and matches.
- › Please only use front load washing machine detergents. Flammable and explosive or toxic solvents are forbidden for use with this appliance. Gasoline and alcohol should not be used as a detergent.

CARE & CLEANING

WARNING: Risk of injury or damage to the appliance.

- › Before maintenance, deactivate the appliance and disconnect the mains plug.
- › Do not use water spray and steam to clean the appliance.
- › Clean the appliance with a moist soft cloth. Only use neutral detergents. Do not use abrasive products, abrasive cleaning pads, solvents or metal objects.
- › Never wash carpets or rugs within the appliance.
- › Be careful to avoid burns when the machine drains hot washing water.
- › After a wash program completes, please wait two minutes before opening the door.
- › If a tumble dryer is installed on top of the washing machine, use the suitable stacking kit. The stacking kit, available from your authorized vendor, can be used only with the appliance specified in the instructions, supplied with the accessory. Read it carefully before installation (Refer to the Installation leaflet).
- › Never lean against the machine door.
- › Please do not close the machine door with excessive force and if you find it difficult to close the door, ensure that the clothing load isn't excessive.
- › Glass door may become hot during operating.

PRODUCT DISPOSAL

- › Disconnect the appliance from the mains supply.
- › Cut off the mains cable and discard it.
- › Remove the door catch to prevent children and pets to get closed in the appliance.

APPLIANCE USE

WARNING: Risk of fire, explosion, electric shock or damage to the appliance.

- › Use this appliance in a household only.
- › **Before operating this appliance, ensure that all packaging and transport bolts have been removed.** Otherwise, serious damage can occur to the appliance.
- › Before washing any clothes for the first time, the washing machine should be operated for one whole cycle without any clothes inside.

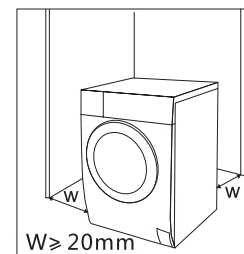
TRANSPORT

- › Always move the appliance cautiously. Do not use the machine door or the handle of the detergent dispenser, to lift the appliance.
- › Transportation bolts should be reinstalled within the machine by a specialised person, prior to transporting the appliance.
- › Ensure that all accumulated water is drained from the appliance before moving.

Installation

INSTALLATION POSITIONING

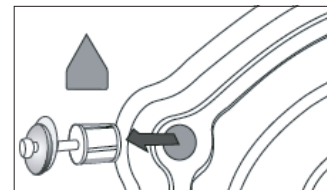
- › Ensure that your appliance is installed on solid and flat ground, in a level position.
- › Please do not place the appliance on a slope, soft carpet or wooden floor.
- › Your appliance should only be installed within an internal environment. Do not install the appliance outdoors.



REMOVING THE TRANSPORTATION BOLTS

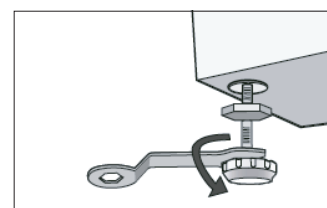
Before using this washing machine, transport bolts must be removed from the backside of this machine. Please take the following steps to remove the bolts:

- › Loosen all bolts with a spanner and then remove them.
- › Use the plugs (supplied) to plug the holes.
- › Keep the transport bolts for future use.



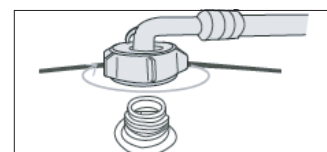
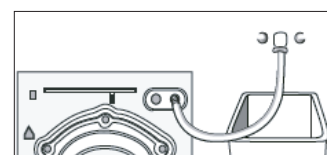
LEVEL ADJUSTING

- › If the floor is obviously uneven, your appliance feet need to be adjusted. If your appliance isn't level, it will cause your appliance to vibrate, and potentially move from its position.
- › Once you've positioned your washing machine, press down from the top in all four corners to ensure that it's completely stable (i.e. not rocking in any direction). Also use a spirit level to ensure that it is completely level in all directions.
- › Should you need to make adjustments, use a spanner to turn the appliance legs until it makes contact with the floor. Turn the leg using one hand and then fasten the nut up against the appliance cabinet, to lock the leg in place.
- › After making any adjustments to the appliance legs, re-check to ensure it is level and no rocking occurring.



CONNECT THE INLET PIPE

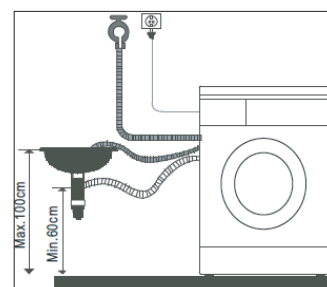
- › Connect the hose elbow to the cold water outlet, screwing in a clockwise direction.
- › Connect the other end of the inlet hose to the water inlet valve on the rear of the washing machine.
- › After installation, if there are any leaks detected, remove the hose and re-install using the steps above. The hose is designed to be used on a standard washing machine cock outlet.



POSITION THE OUTLET HOSE

- › The outlet hose (used to drain the discharged water) is to be ideally connected to the relevant waste pipe, although it can also be positioned to drain into a sink/trough. Note that the outlet hose has a minimum outlet position of 60cm and a maximum position of 100cm (as illustrated below).

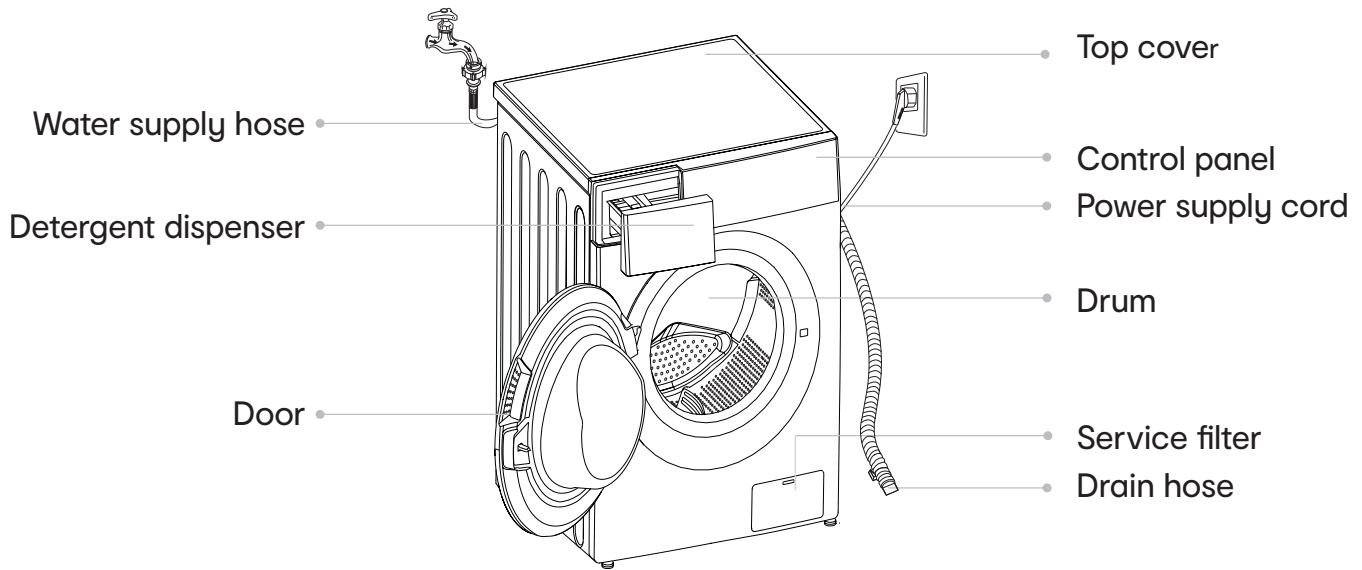
Note: If you are positioning the outlet hose to drain into a sink or trough, please ensure that it is fixed in place and that the sink remains unblocked at all times.



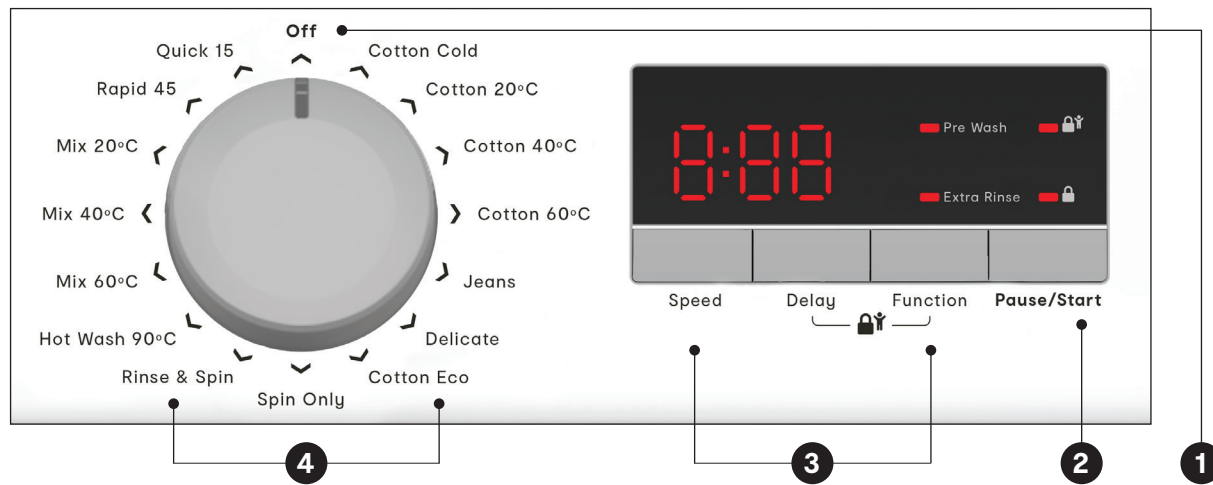
This page is intentionally left blank

Your Washing Machine

THE APPLIANCE



CONTROL PANEL



1 Off
Product is switched off.

2 Start/Pause
Press the button to start or pause the washing cycle.

3 Option
This allows you to select an additional function and will light when selected.

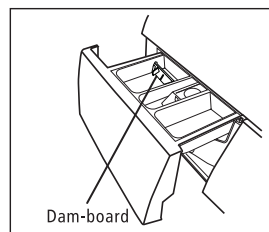
4 Programmes
Available according to the laundry type.

Your Washing Machine (Continued)

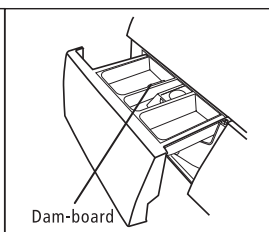
DETERGENT DISPENSER

The detergent drawer of your washing machine is split into three compartments:

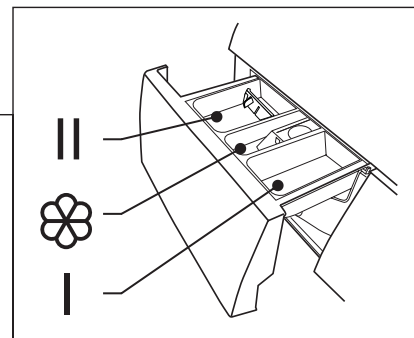
- I Pre wash detergent
- II Main wash detergent
- ☼ Softener



Liquid detergent



Powder detergent



Pull out the dispenser

WARNING: Detergent only need to be added in “case I” after selecting pre-washing for machines with this function.

| Programme | Option | | | Programme | Option | | |
|---------------|-----------------------|-----------------------|-----------------------|----------------|-----------------------|-----------------------|-----------------------|
| | Delay | Extra Rinse | Pre Wash | | Delay | Extra Rinse | Pre Wash |
| Cotton(Cold) | <input type="radio"/> | <input type="radio"/> | <input type="radio"/> | Rinse&Spin | <input type="radio"/> | <input type="radio"/> | |
| Cotton (20°C) | <input type="radio"/> | <input type="radio"/> | <input type="radio"/> | Heat Wash 90°C | <input type="radio"/> | <input type="radio"/> | <input type="radio"/> |
| Cotton (40°C) | <input type="radio"/> | <input type="radio"/> | <input type="radio"/> | Mix(60°C) | <input type="radio"/> | <input type="radio"/> | <input type="radio"/> |
| Cotton(60°C) | <input type="radio"/> | <input type="radio"/> | <input type="radio"/> | Mix(40°C) | <input type="radio"/> | <input type="radio"/> | <input type="radio"/> |
| Jeans | <input type="radio"/> | <input type="radio"/> | <input type="radio"/> | Mix(20°C) | <input type="radio"/> | <input type="radio"/> | <input type="radio"/> |
| Delicate | <input type="radio"/> | <input type="radio"/> | | Rapid 45' | <input type="radio"/> | <input type="radio"/> | <input type="radio"/> |
| Cotton ECO | <input type="radio"/> | | | Quick 15' | <input type="radio"/> | | |
| Spin Only | <input type="radio"/> | | | | | | |

● Required

○ Optional

Quick Start Guide

QUICK START:

Follow the procedure below to operate your washing machine.

1. Install your washing machine.
2. Turn on the water supply.
3. Plug in the power supply.
4. Open the door and load in the laundry.
5. Close the machine door.
6. Measure the detergent and pour in the appropriate amount.
7. Select the desired program.
8. Select any additional functions if required.
9. Press the Start/Pause button to begin.
10. Completion of the washing cycle.
 - › At the completion of a wash program, the washing machine will make an audible tone.
11. Turn off the water supply
 - › Although the washing machine would be switched off, the power outlet should be switched off and the plug should be pulled out for safety reasons.

OPTIONAL FUNCTIONS

SPEED

Speed can be set by pressing the speed button repeatedly to select your desired speed

| Programme | Default Speed(rpm) | | | Programme | Default Speed(rpm) | | |
|---------------|--------------------|------|------|----------------|--------------------|------|------|
| | 1000 | 1200 | 1400 | | 1000 | 1200 | 1400 |
| Cotton(Cold) | 1000 | 1000 | 1000 | Rinse&Spin | 1000 | 1000 | 1000 |
| Cotton (20°C) | 1000 | 1000 | 1000 | Heat Wash 90°C | 1000 | 1000 | 1000 |
| Cotton (40°C) | 1000 | 1000 | 1000 | Mix(60°C) | 1000 | 1000 | 1000 |
| Cotton(60°C) | 1000 | 1000 | 1000 | Mix(40°C) | 1000 | 1000 | 1000 |
| Jeans | 1000 | 1000 | 1000 | Mix(20°C) | 1000 | 1000 | 1000 |
| Delicate | 600 | 600 | 600 | Rapid 45' | 800 | 800 | 800 |
| Cotton ECO | 1000 | 800 | 1400 | Quick 15' | 800 | 800 | 800 |
| Spin Only | 1000 | 1000 | 1000 | | | | |

EXTRA RINSE

Provides an extra rinse at the end of your selected cycle.

PRE WASH

The Prewash function provides an extra wash before main wash, it is suitable for washing the dust that rises to surface of the clothes; You need to put detergent into Case (I) when selecting it.

DELAY START

Delays the start of your washing load for 0-24 hours.

Operating Instructions

PREPARATION BEFORE WASHING CLOTHES

Please follow these steps carefully to avoid trouble with your washing machine and damaging your clothing.

Washing Considerations

- › New clothes in particular, can leach colour onto other clothing items, particularly whites.
- › Consider washing these and bright colours separately.
- › Stained clothing should be treated with a stain remover, prior to washing.
- › Temperature sensitive clothes should be washed in accordance with their care direction label. Otherwise distortion and/or changes in colour could occur.
- › Never allow washing to sit in the machine for a long period of time- particularly when wet. Clothes can become mouldy and develop an odour.
- › Certain clothing cannot be washed in a washing machine and their care directions may state dry cleaning or hand washing required.
- › Wrinkle style clothes, embossed clothes, resin clothes, etc may become distorted when immersed in water.
- › Avoid washing clothes without care direction labels within the appliance, to be safe.
- › Always remove all items from clothing pockets, as hard items can cause damage to the appliance.
- › Try to wash clothing colours and sizes in like loads, as this will improve the effectiveness of the washing and results.
- › Close all clothing zips and ensure all buttons are fastened securely.
- › Delicate items such as bras, handkerchiefs and ties should be washed within a special washing bag, to prevent damage to themselves and other clothes.
- › When washing a large single item that could become heavy (i.e. a towel or jacket), it can cause the appliance to become unbalance during its spin cycle. Therefore it's recommended to add one or two more clothing items to help the machine balance.
- › Try to remove any pet hair, dust and stains from clothing prior to washing.
- › Baby clothing should be washed separately.
- › Clothing that gets easily "fuzzed" or loses fibres easily, should be washed separately.
- › Black clothing items should be washed separately.
- › Do not wash waterproof materials within the washing machine.
- › The working condition of the washer should be (0-40)°C. If used under 0°C, the inlet valve and draining system may be damaged. If the machine is placed under condition of 0°C or less, then it should be transferred to normal ambient temperature to ensure the water supply hose and drain hose are not frozen before use.

Pay Attention to Detergents

- › Only use suitable front load washing machine detergents with this appliance. Powders and liquid detergents only.
- › Only ever use the recommended quantity of detergent, as per the manufacturer's guidelines, as an excessive quantity can cause excessive bubbles and overflow to occur.
- › It can also result in detergent residue remaining on the clothing after completion of the wash cycle.
- › Please check the labels and the explanation of using detergent before wash. Use non-foaming or less-foaming detergent suitable for machine washing properly.

WARNING: Always keep detergents and additives out of reach from children.

Clothing Classifications

The symbol types on care labels are typically classified into the following textiles: Cotton, Blended Fiber, Synthetic Fiber, Silk, Wool and Artificial Fiber.

Confirm the Washing Capacity

Never load the machine with excessive weights, as it will affect your washing results.

Operating Instructions (Continued)

WASHING CLOTHES FOR THE FIRST TIME

Before washing any clothes, please perform one cycle without clothes inside as follows:

- › Connect the power source and water.
- › Insert a small amount of detergent into Compartment II of the detergent drawer and close it.
- › Select the desired program.
- › Press the “Start/Pause” button on the appliance.
- › Allow the program to complete and your washing machine is now ready for use.

SELECTING A PROCEDURE

You should select your washing program based on the type of clothing, quantity and dirtiness level, in combination with the following temperature table.

| Temperature Mode | Application |
|------------------------------|---|
| 90°C | Seriously soiled clothing, pure white cotton (i.e. bed linen, towels, table cloths, etc) |
| 60°C | Moderately soiled clothing, cotton and synthetic articles with certain decolourising degree (i.e. shirts, pyjamas, etc) |
| 40°C, 30°C, 20°C, Cold Water | Lightly soiled clothing, synthetics and wool |

TO SELECT A PROGRAM:

- › First turn the Program Selection Dial to the corresponding wash program, according to the type of textiles being washed.
- › Secondly, select the desired temperature based on the level of dirtiness.

Note: Generally the higher the temperature, the more power that's consumed.

- › Finally, select your desired spin speed. The higher the spin speed, the drier the textiles will be at completion, however more delicate textiles will be more wrinkled. Delicate textiles should be set with a lower spin speed.

Selecting the main washing program depends on the types of clothing to be washed, as follows:

Cotton Eco

This procedure saves energy and limits the washing temperature to 40°C or 60°C. Use with a small quantity of clothes which are only lightly dirty.

Cotton

To increase the washing results, the main washing time is increased. It is recommended for washing clothes for babies or worn by the persons with skin allergies. It is recommended for washing durable cotton articles, for example: bed sheets, quilt covers, pillowcases, gowns, underwear, etc.

Heat Wash 90°C

Rapid 45'

Washing few and lightly soiled clothes quickly.

Mix

For loads with mixed textiles made of cottons and synthetics.

Jeans

This reduces the wear and tear on your jeans.

Quick 15'

Extra short program suitable for lightly soiled washing and small amounts of laundry.

Spin Only

This procedure provides a spin only option. Residual soapy water shall be drained out before spinning.

Rinse & Spin

This procedure provides a short rinse cycle followed by a spin cycle.

Delicate

For delicate, washable textiles, e.g. made of silk, satin, synthetic fibres or blended fabrics.

Operating Instructions (Continued)

SETTING THE DELAY FUNCTION

To set the delay function:

- › Select a program by turning the Program dial
- › Press the Delay button to choose a time (The delaying time is 0-24H)
- › Press the Start/Pause button to begin your cycle

To cancel the delay function, press the Delay button until the display is back to 0H. The delay function should be activated before starting the program. If the program has already started, turning off the machine will reset the delay function.

CHILD LOCK

To set the child lock function:

- › Select a program by turning the Program dial
- › Press the Start/Pause button to begin your cycle
- › Press the Temperature & Function buttons at the same time for 3 seconds until an audible tone is heard.

When the Child Lock function is on, an indicator light will switch on and the Child Lock and Remaining Time on the display will alternate in display.

Child Lock will lock all buttons except the Power and the Child Lock button combinations. To release the Child Lock, press the Temperature & Function buttons at the same time for 3 seconds until an audible tone is heard.

Make sure the program is selected and the cycle has started before using the Child Lock function.

6KG MACHINE WASHING PROGRAMS TABLE

| Programme | Load(kg) | Temp.(°C) | Default Time |
|----------------|----------|-----------|--------------|
| | 6.0 | Default | 6.0 |
| Cotton(Cold) | 6.0 | Cold | 2:20 |
| Cotton (20°C) | 6.0 | 20 | 2:20 |
| Cotton (40°C) | 6.0 | 40 | 2:40 |
| Cotton(60°C) | 6.0 | 60 | 2:45 |
| Jeans | 6.0 | 60 | 1:45 |
| Delicate | 3.0 | 30 | 0:50 |
| Cotton ECO | 6.0 | 30 | 0:59 |
| Spin Only | 6.0 | -- | 0:12 |
| Rinse&Spin | 6.0 | -- | 0:20 |
| Heat Wash 90°C | 6.0 | 90 | 2:17 |
| Mix(60°C) | 6.0 | 60 | 1:30 |
| Mix(40°C) | 6.0 | 40 | 1:20 |
| Mix(20°C) | 6.0 | 20 | 1:00 |
| Rapid 45' | 2.0 | 40 | 0:45 |
| Quick 15' | 2.0 | -- | 0:15 |

NOTE: The parameters in this table are only for user's reference. The actual parameters may be different with the parameters in the above mentioned table.

Operating Instructions (Continued)

7.5KG MACHINE WASHING PROGRAMS TABLE

| Programme | Load(kg) | Temp.(°C) | Default Time |
|---------------|----------|-----------|--------------|
| | 7.5 | Default | 7.5 |
| Cotton(Cold) | 7.5 | Cold | 2:20 |
| Cotton (20°C) | 7.5 | 20 | 2:20 |
| Cotton (40°C) | 7.5 | 40 | 2:40 |
| Cotton(60°C) | 7.5 | 60 | 2:45 |
| Jeans | 7.5 | 60 | 1:45 |
| Delicate | 2.5 | 30 | 0:50 |
| Cotton ECO | 7.5 | 60 | 5:57 |
| Spin Only | 7.5 | -- | 0:12 |
| Rinse&Spin | 7.5 | -- | 0:20 |
| HeatWash 90°C | 7.5 | 90 | 2:17 |
| Mix(60°C) | 7.5 | 60 | 1:30 |
| Mix(40°C) | 7.5 | 40 | 1:20 |
| Mix(20°C) | 7.5 | 20 | 1:00 |
| Rapid 45' | 2.0 | 40 | 0:45 |
| Quick 15' | 2.0 | -- | 0:15 |

NOTE: The parameters in this table are only for user's reference. The actual parameters may be different with the parameters in the above mentioned table.

ENERGY TESTING NOTES

Energy test program: Cotton ECO.

Speed: the highest speed;Other as the default.

Half load for 6.0kg machine is 3.0kg.

Half load for 7.0kg machine is 3.75kg.

“Cotton ECO” is the standard washing programs to which the information in the label and the fiche relates,and they are suitable to clean normally soiled cotton laundry and that they are the most efficient programmes in terms of combined energy and water consumptions for washing that type of cotton laundry,that the actual water temperature may differ from the declared cycle temperature.

This page is intentionally left blank

Cleaning & Maintenance

CLEANING PROCEDURES

WARNING: Before beginning any cleaning or maintenance, always ensure the appliance is switched off, the power plug is removed from the power outlet and the water supply has been closed.

CLEANING THE WASHING MACHINE

Proper maintenance of your washing machine will keep it looking as new and extend its working life.

- › The exterior surface can be cleaned with household cleaners and a soft damp cleaning cloth.
- › If there is any residual water at the completion of a washing program, please use a cloth to wipe it off immediately.

Note: Never use solvents or harsh cleaning chemicals on your washing machine's exterior.

CLEANING THE INTERNAL DRUM

Should any rust form on the inside drum (i.e. water was left to sit for an extended period of time), please remove immediately using a chlorine free detergent. Never use steel wool or a harsh abrasive.

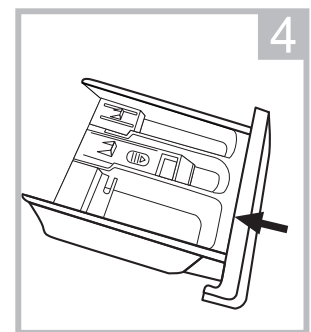
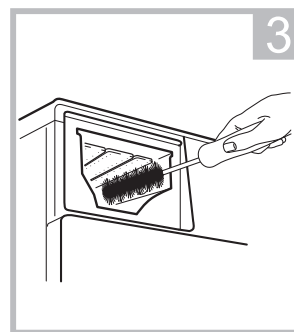
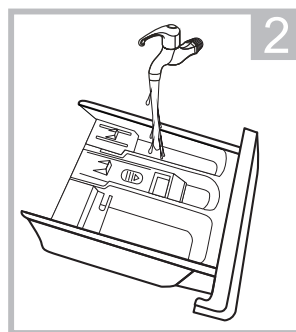
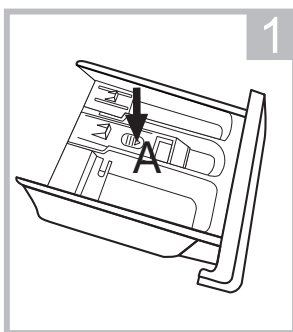
CLEANING THE DOOR SEAL AND GLASS

Wipe the glass and seal after each wash to remove lint and stains. If lint builds up it can cause leaks. Remove any coins, buttons and other objects from the seal after each wash.

CLEANING THE DETERGENT DRAWER

You should periodically follow these steps to ensure the detergent drawer remains clean.

- › Press down on the arrow, located on the cover for the fabric softener compartment of the detergent drawer.
- › Clean the dispenser drawer under warm water.
- › Wash all grooves with warm water.
- › Re-install the fabric softener compartment cover into the detergent drawer, and push the drawer back into position.



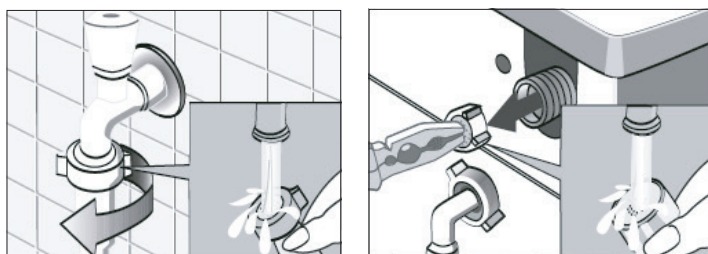
Cleaning & Maintenance (Continued)

CLEANING THE INLET FILTER

You should clean the inlet filter periodically, or if you find that insufficient water is being supplied to your washing machine when the supply tap is open.

To clean the inlet filter:

- › Close the water supply tap.
- › Select any wash program (except for Spin Only or Drain Only) and press the Start/Pause button. Allow the program to run for about 40 seconds.
- › Remove the inlet pipe from the closed tap and use water to wash the filter.
- › Reconnect the inlet pipe to the tap.



To clean the washing machine filter:

- › Screw off the inlet pipe from the rear of the washing machine.
- › Pull out the filter with long nose pliers, wash it thoroughly with water and re-install the filter.
- › Reconnect the inlet pipe to the rear of the washing machine.
- › Open the water supply at the tap and ensure there is no water leakage.
- › Once finished, close the water supply tap.

Note: Generally the tap inlet filter is washed first followed by the washing machine filter. If only the washing machine filter is washed, then you should still follow steps 1-3 for cleaning the inlet filter first.

CLEANING THE DRUM PUMP FILTER

WARNING: To avoid the risk of an electric shock, always remove the power plug from the power outlet before cleaning the Drain Pump filter.

Periodically you should clean the drain pump filter to ensure normal operation of your washing machine. The type of washing, frequency and soil level of your washing cycles will alter how often this procedure needs to be undertaken, however you should inspect the filter regularly.

Should your washing machine not empty and/or spin, or your machine makes unusual noises during operation, your Drain Pump filter could be blocked. Follow this procedure to check or remove any foreign objects.

- › After disconnecting the power, open the filter cover at the front base of your washing machine.
- › Unscrew the filter in an anti-clockwise direction and remove any foreign objects.
- › Re-install the filter and close the service panel

WARNING: Never remove the pump cover when the washing machine is in operation, always wait until the appliance has finished and the internal drum is empty. There can be hot water within the pump, so be careful to avoid burns, should it have operated recently. When replacing the cover, be careful to ensure it is closed securely.

Cleaning & Maintenance (Continued)

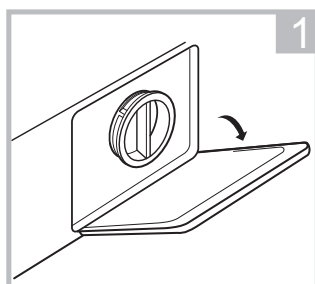
CLEANING THE DRUM PUMP FILTER

WARNING:

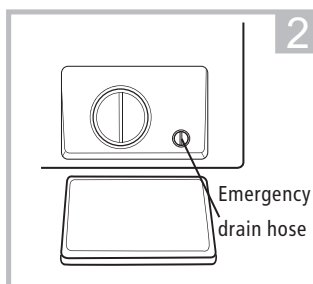
- › Be careful of the hot water!
- › Allow detergent solution to cool down.
- › Unplug the machine to avoid electrical shock before washing.
- › Drain pump filter can filter the yarns and small foreign matters from the washing.
- › Clean the filter periodically to ensure the normal operation of washing machine.
- › To avoid the risk of an electric shock, always remove the power plug from the power outlet before cleaning the Drain Pump filter.

Periodically you should clean the drain pump filter to ensure normal operation of your washing machine. The type of washing, frequency and soil level of your washing cycles will alter how often this procedure needs to be undertaken, however you should inspect the filter regularly.

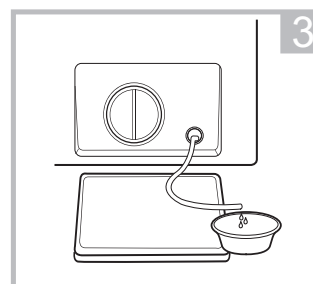
Should your washing machine not empty and/or spin, or your machine makes unusual noises during operation, your Drain Pump filter could be blocked. Follow this procedure to check or remove any foreign objects.



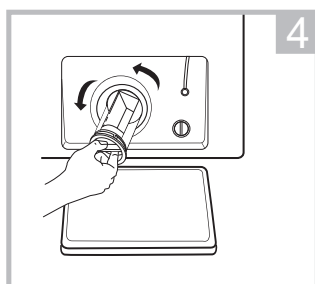
Open the lower cover cap



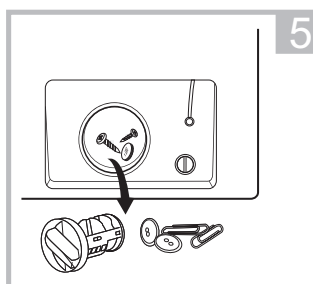
Rotate 90° and pull out the emergency drain hose, and take off the hose cap



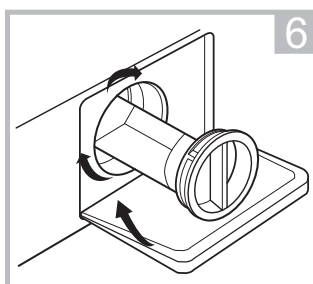
After water runs out, reset the drain hose



Open the filter by turning to the counter clockwise



Remove extraneous matter



Close the lower cover cap

CAUTION:

- › Make sure that valve cap and emergency drain hose are reinstalled properly, cap plates should be inserted aligning to hole plates otherwise water may leak.
- › Some machines don't have emergency drain hose, so step 2 and step 3 can be skipped. Rotate lower cover cap directly to make water run into basin.
- › When the appliance is in use and depending on the programme selected there can be hot water in the pump. Never remove the pump cover during a wash cycle, always wait until the appliance has finished the cycle, and is empty. When replacing the cover, ensure it is securely re-tightened.

Troubleshooting

WARNING: Only authorised technicians should carry out repairs.

Before contacting our customer service team, please refer to the table below to see if your fault can be fixed by yourself. Should a service technician visit be arranged and its found there are no faults with the appliance, a call out charge will apply.

| PROBLEM | SOLUTION |
|--|---|
| Washing Machine won't start-up | <ul style="list-style-type: none"> › Check that the mains plug is inserted and switched on at the power point. › Check that the door is closed securely. › Check that the relevant fuse hasn't blown. › Check that the On/Off button has been pressed. › Check that the water supply tap has been opened. |
| Door won't open | <ul style="list-style-type: none"> › The machine's safety protection is working. Disconnect the power and reconnect the power. |
| Heating fault | <ul style="list-style-type: none"> › The NTC is damaged and/or the heating pipe is aging. You should be able to wash the clothes normally however without the water heating. Please contact our customer service team. |
| Water is leaking | <ul style="list-style-type: none"> › The drainage waste pipe may be blocked. › Check and fasten all water connection pipes. › Inlet or Outlet hoses may be damaged. Please check. |
| Water is overflowing from the base of the machine | <ul style="list-style-type: none"> › Check that the inlet pipes are connected firmly at the rear of the machine. › Check that the outlet hose hasn't been damaged. |
| Display isn't lighting up | <ul style="list-style-type: none"> › Check that the power isn't disconnected. › PC board may have issues. Please contact our customer service team. |
| Detergent residues remain in the detergent drawer | <ul style="list-style-type: none"> › Ensure you are using a correct amount of detergent. › Follow the cleaning steps to remove any damp residual detergent from the drawer. |
| Washing results aren't to expectations | <ul style="list-style-type: none"> › Ensure you are using a sufficient amount of detergent. › Ensure the correct quantity of clothes are being used depending on the wash program selected. › Ensure you are using the correct wash program to suit the clothing and level of dirtiness. › Try using an alternative detergent. |
| Washing machine is making an abnormal noise or vibrating | <ul style="list-style-type: none"> › Ensure the washing machine is level. › Ensure that all transportation bolts have been removed. › Ensure the appliance has been installed on a solid and level floor. › Ensure that all legs are making contact with the floor and adjust as required. › Follow the Drain Pump cleaning procedure and ensure there are no foreign objects. |

Note: If the above steps don't resolve your issue or you cannot resolve the fault by yourself:

- › Press the "On/Off" button.
- › Switch off the appliance at the power outlet and remove the plug.
- › Call our customer service team.

Troubleshooting (Continued)

| INDICATION | PROBLEM | SOLUTION |
|------------|---------------------------------------|---|
| E30 | Door is not closed properly | <ul style="list-style-type: none"> › Restart after the door is closed › Check if there are clothes or washing articles stuck |
| E10 | Water injecting problem while washing | <ul style="list-style-type: none"> › Check if the water pressure is too low › Straighten the water pipe › Check if the inlet valve filter is blocked |
| E21 | Overtime water draining | <ul style="list-style-type: none"> › Check if the drain hose is blocked |
| E12 | Water overflow | <ul style="list-style-type: none"> › Restart the washer |

Note: If the above steps don't resolve your issue or you cannot resolve the fault by yourself:

- › Press the "On/Off" button.
- › Switch off the appliance at the power outlet and remove the plug.
- › Call Kmart Customer Service Centre on 1800 124 125 (Australia)

Technical Specifications

Below outlines the technical specifications for your Washing Machine.

| Model | AFLW60G | AFLW75G |
|---------------------------|--------------------|--------------------|
| Washing Capacity | 6.0kg | 7.5kg |
| Dimensions (W x D x H mm) | 595 x 400 x 850 mm | 595 x 565 x 850 mm |
| Net Weight | 55kg | 68kg |
| Rated Power | 2050W | 2050W |
| Power Supply | 220-240V, ~50Hz | 220-240V, ~50Hz |
| Standard Water Pressure | 0.05MPa~1.0MPa | 0.05MPa~1.0MPa |

Testing Notes

NOTE:

This product is subject to continuous improvement, specifications are subject to change without prior notice.

This product was tested in accordance with AS/NZS 2040.2 and AS/NZS 6400 using program: "Cotton Eco 60", which is the program recommended for a normally soiled cotton load at rated capacity.

6KG WASHING MACHINE

ADDITIONAL INFORMATION FOR Standard performance TESTING:(AS/NZS 2040.1:2005+Amdt1-2007+Amdt2-2009+Amdt 3:2010)

1. Water connections: Cold & hot water connection
2. Water supply pressure: 320 kPa
3. Warm wash Program: Cotton ECO Display:6:00
Cold wash program: Cotton Cold (no temperature display is cold wash)
4. Detergent type: Drum detergent
5. Detergent quantity: Default
6. Adding detergent:
The detergent is dissolved and added as Paragraph B7.3 of AS/NZS 2040.1
The detergent shall be dissolved in 1 L of water
7. Anti-sudsing agent: Max
8. Test load mass: 6.0kg
9. Water consumption: 61L
10. Test Voltage: 220-240V~, 50Hz

7.5KG WASHING MACHINE

ADDITIONAL INFORMATION FOR Standard performance TESTING:(AS/NZS 2040.1:2005+Amdt1-2007+Amdt2-2009+Amdt 3:2010)

1. Water connections: Cold & hot water connection
2. Water supply pressure: 320 kPa
3. Warm wash Program: Cotton ECO Display:5:57
Cold wash program: Cotton Cold (no temperature display is cold wash)
4. Detergent type: Drum detergent
5. Detergent quantity: Default
6. Adding detergent:
The detergent is dissolved and added as Paragraph B7.3 of AS/NZS 2040.1
The detergent shall be dissolved in 1 L of water
7. Anti-sudsing agent: Max
8. Test load mass: 7.5kg
9. Water consumption: 77L
10. Test Voltage: 220-240V~, 50Hz

Warranty

24 Month Warranty

Thank you for your purchase from Kmart.

Kmart Australia Ltd warrants your new product to be free from defects in materials and workmanship for the period stated above, from the date of purchase, provided that the product is used in accordance with accompanying recommendations or instructions where provided. This warranty is in addition to your rights under the Australian Consumer Law.

Kmart will provide you with your choice of a refund, repair or exchange (where possible) for this product if it becomes defective within the warranty period. Kmart will bear the reasonable expense of claiming the warranty.

This warranty will no longer apply where the defect is a result of alteration, accident, misuse, abuse or neglect.

Please retain your receipt as proof of purchase and contact our Customer Service Centre on 1800 124 125 (Australia) or alternatively, via Customer Help at Kmart.com.au for any difficulties with your product.

Warranty claims and claims for expense incurred in returning this product can be addressed to our Customer Service Centre at 690 Springvale Rd, Mulgrave Vic 3170.

Our goods come with guarantees that cannot be excluded under the Australian Consumer Law. You are entitled to a replacement or refund for a major failure and compensation for any other reasonably foreseeable loss or damage. You are also entitled to have the goods repaired or replaced if the goods fail to be of acceptable quality and the failure does not amount to a major failure.

This page is intentionally left blank

