

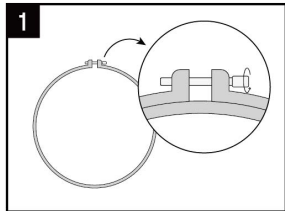
# Punch Needle Kit Koala

8+  
years

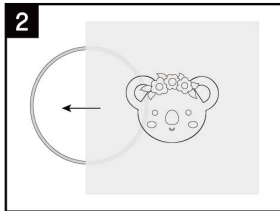
**TIPS:**

1. The needle head should always remain touching the fabric.
2. Start with the outline first, then fill in the main elements from the inside out, going a row at a time.
3. Make sure your yarn has enough slack during punching.
4. When you want to change directions, be sure to keep the opening of the punch needle towards the direction you want to go.

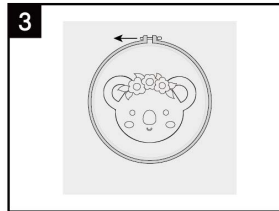
## How to Mount Fabric in the Embroidery Hoop



Unscrew the metal screw from the outer ring to loosen it.

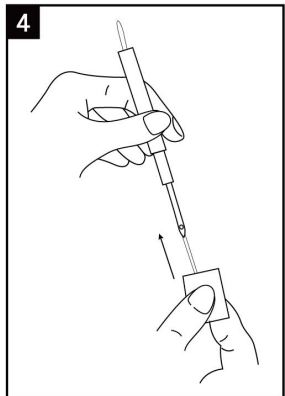


Place the embroidery fabric over the inner ring of the embroidery hoop, and keep the design centered in the hoop.

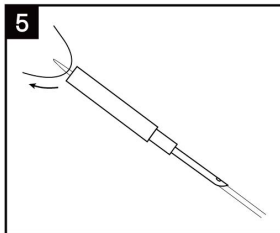


Press the outer ring down around the inner ring of the embroidery hoop. Then tighten the screw until it feels firm and in place.

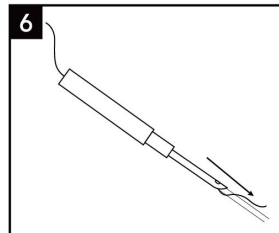
## How To Thread The Punch Needle



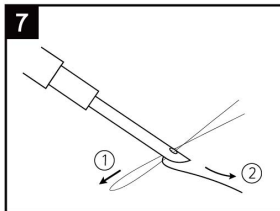
Insert the metal threader through the hollow tip of the needle directly, and push the threader all the way down so that the end sticks out of the back of the punch needle.



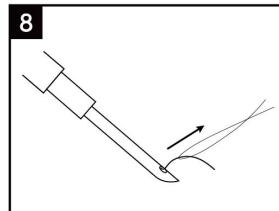
Thread your end of the yarn into the metal threader and leave 3 cm or more of tail.



Pull the metal threader back gently to the punch needle tip and remove the yarn from the metal threader.

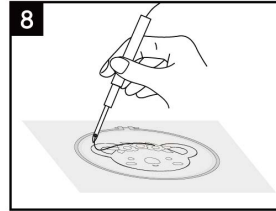


Put your needle threader through the eye of your needle tip and thread the yarn end through the metal threader.

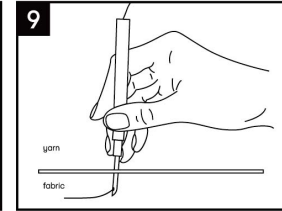


Pull the threader out of the eye gently, then remove the yarn from the threader.

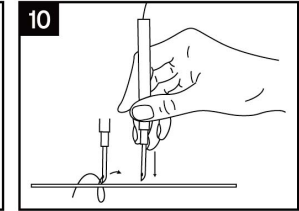
## How To Use The Punch Needle



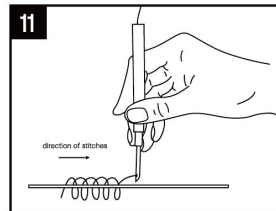
Hold the needle with the hollow end facing the direction where your stitch is going.



Punch your first stitch and pull the tail through the back of the fabric.



Carefully lift the punch needle back up but make sure to keep the tip of the needle touching the front of the fabric. Lifting up too high will make your stitches loose and uneven. You will then get a loop on the back of the fabric.



1. Skip about 2-3 holes before making your next stitch, and then punch the needle back down through the fabric.
2. Flip the fabric over and check that the loops are a consistent length and close enough together to form a solid colour. You can always go back and fill in gaps in your stitches or make your rows closer together.

## How To End Stitches

1. Flip the fabric over and trim the piece of yarn that is coming out of the tip of the needle.
2. Take your tool out of the fabric.
3. You can then trim both tails to be the same length as the loops you've made so that they blend in.

## How To Fix Mistakes

1. If you make a mistake, it is important to catch it quickly and fix it! You'll have to carefully unravel the stitches until you are at a point where you'd like to start again.
2. Run your finger over the holes where the previous stitches were to make them smaller.
3. Pull the yarn from the back of your punch needle until it is tight and there is no slack between the punch needle and the fabric.
4. Then begin to stitch again.



**WARNING:**  
LONG CORD AND SMALL PARTS. STRANGULATION AND CHOKING HAZARD. NOT FOR CHILDREN UNDER 3 YEARS

ADULT SUPERVISION IS RECOMMENDED.

**WARNING:** THE PRODUCT CONTAINS FUNCTIONAL SHARP POINT(S)/SHARP EDGE(S). PLEASE USE AS INTENDED.

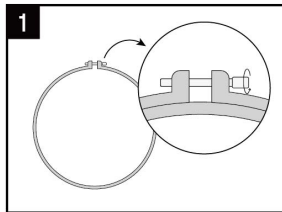
# Punch Needle Kit Heart

**8+**  
years

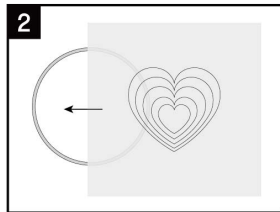
**TIPS:**

1. The needle head should always remain touching the fabric.
2. Start with the outline first, then fill in the main elements from the inside out, going a row at a time.
3. Make sure your yarn has enough slack during punching.
4. When you want to change directions, be sure to keep the opening of the punch needle towards the direction you want to go.

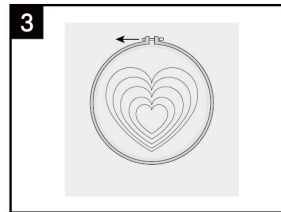
## How to Mount Fabric in the Embroidery Hoop



Unscrew the metal screw from the outer ring to loosen it.

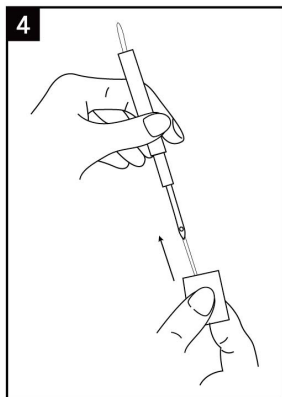


Place the embroidery fabric over the inner ring of the embroidery hoop, and keep the design centered in the hoop.

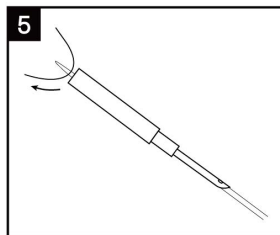


Press the outer ring down around the inner ring of the embroidery hoop. Then tighten the screw until it feels firm and in place.

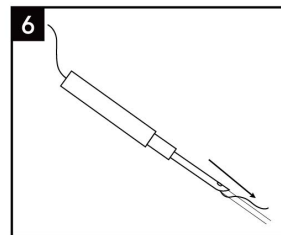
## How To Thread The Punch Needle



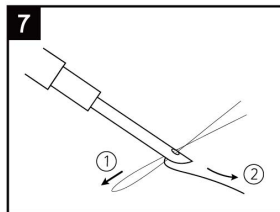
Insert the metal threader through the hollow tip of the needle directly, and push the threader all the way down so that the end sticks out of the back of the punch needle.



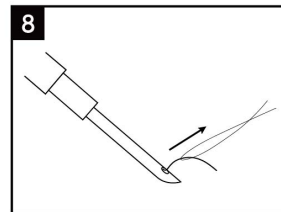
Thread your end of the yarn into the metal threader and leave 3 cm or more of tail.



Pull the metal threader back gently to the punch needle tip and remove the yarn off the metal threader.

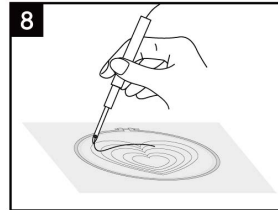


Put your needle threader through the eye of your needle tip and thread the yarn end through the metal threader.

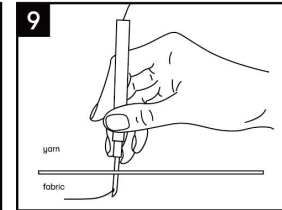


Pull the threader out of the eye gently, then remove the yarn from the threader.

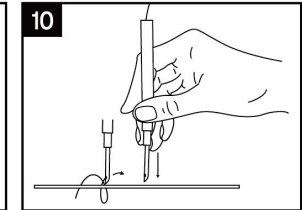
## How To Use The Punch Needle



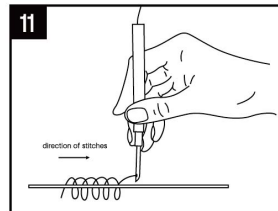
Hold the needle with the hollow end facing the direction where your stitch is going.



Punch your first stitch and pull the tail through the back of the fabric.



Carefully lift the punch needle back up but make sure to keep the tip of the needle touching the front of the fabric. Lifting up too high will make your stitches loose and uneven. You will then get a loop on the back of the fabric.



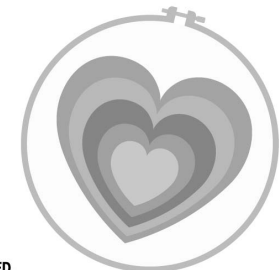
1. Skip about 2-3 holes before making your next stitch, and then punch the needle back down through the fabric.
2. Flip the fabric over and check that the loops are a consistent length and close enough together to form a solid colour. You can always go back and fill in gaps in your stitches or make your rows closer together.

## How To End Stitches

1. Flip the fabric over and trim the piece of yarn that is coming out of the tip of the needle.
2. Take your tool out of the fabric.
3. You can then trim both tails to be the same length as the loops you've made so that they blend in.

## How To Fix Mistakes

1. If you make a mistake, it is important to catch it quickly and fix it! You'll have to carefully unravel the stitches until you are at a point where you'd like to start again.
2. Run your finger over the holes where the previous stitches were to make them smaller.
3. Pull the yarn from the back of your punch needle until it is tight and there is no slack between the punch needle and the fabric.
4. Then begin to stitch again.



**WARNING:**  
LONG CORD AND SMALL PARTS. STRANGULATION AND CHOKING HAZARD. NOT FOR CHILDREN UNDER 3 YEARS

**ADULT SUPERVISION IS RECOMMENDED.**  
**WARNING: THE PRODUCT CONTAINS FUNCTIONAL SHARP POINT(S)/SHARP EDGE(S). PLEASE USE AS INTENDED.**