

anko

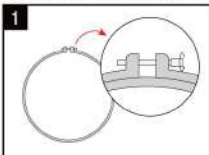
Embroidery Kit Unicorn

8+
years

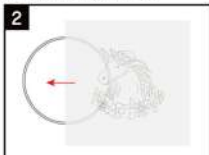
Tips:

1. Pull and adjust the material around the hoop until the fabric is flat and even.
2. We suggest you cut the piece of thread about 50cm long. This allows enough thread to work efficiently without tangling or knotting.
3. Tighten the threads when stitching.
4. Keep the packaging nearby so that you can look at the picture for inspiration.

How To Mount Fabric In The Embroidery Hoop:



Unscrew the metal screw from the outer ring to loosen it.



Place the embroidery fabric over the inner ring of the embroidery hoop, and keep the design centered in the hoop.

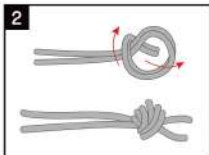


Press the outer ring down around the inner ring of the embroidery hoop. Then tighten the screw until it feels firm and in place.

How To Thread The Needle:

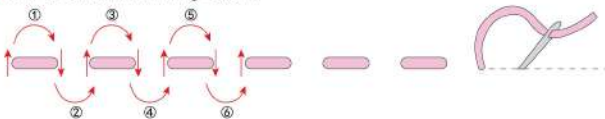


Select a colour yarn, and cut a long piece. Insert the yarn into the eye (hole) of the needle. The needle will now be threaded.



Tie both ends of the yarn into a double knot. Starting at the back of the fabric and at the edge of a colour section, bring the needle up through a hole matching the colour yarn.

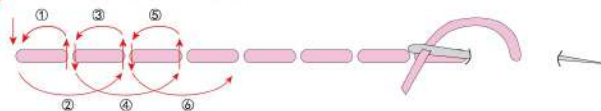
1 How To Stitch In Running Stitch:



Thread the needle into the fabric from the back. Then, come up through the fabric and make one straight stitch. Leave a little space and then come back up through the fabric.

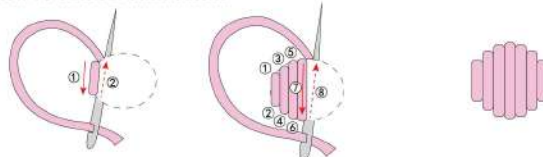
Embroidery Kit Unicorn

2 How To Stitch In Back Stitch:



Thread the needle into the fabric from the back. Then, come up through the fabric and make one straight stitch. Come back up a stitch length away from your initial stitch. Then, go back down right next to it to create the second stitch.

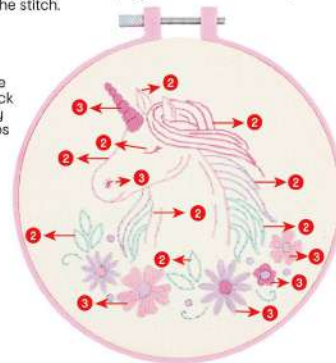
3 How To Stitch In Satin Stitch:



Thread the needle into the fabric from the back. Then come up with the thread and place it underneath the initial hole, making a vertical stitch. Go to the top again and come back up. Continue to do this, going top to bottom with the stitch.

How To End The Stitch:

End a stitching pattern by leaving the needle and thread on the underside of the fabric. Take the leftover thread and draw it through the back of the stitches with the needle, snipping off any leftover thread. This hides the thread and keeps it securely in place, so you don't need to knot the thread end.



ADULT SUPERVISION IS RECOMMENDED.

WARNING: THE PRODUCT CONTAINS FUNCTIONAL SHARP POINTS/SHARP EDGES. PLEASE USE AS INTENDED.

WARNING: LONG CORD AND SMALL PARTS. STRANGULATION AND CHOKING HAZARD. NOT FOR CHILDREN UNDER 3 YEARS.

210x297mm

anko

Embroidery Kit Sun

8+
years

Tips:

1. Pull and adjust the material around the hoop until the fabric is flat and even.
2. We suggest you cut the piece of thread about 50cm long. This allows enough thread to work efficiently without tangling or knotting.
3. Tighten the threads when stitching.
4. Keep the packaging nearby so that you can look at the picture for inspiration.

How To Mount Fabric In The Embroidery Hoop:

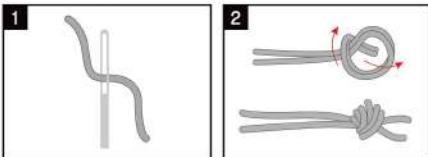


1. Unscrew the metal screw from the outer ring to loosen it.

2. Place the embroidery fabric over the inner ring of the embroidery hoop, and keep the design centered in the hoop.

3. Press the outer ring down around the inner ring of the embroidery hoop. Then tighten the screw until it feels firm and in place.

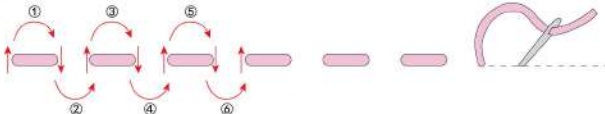
How To Thread The Needle:



1. Select a colour yarn, and cut a long piece. Insert the yarn into the eye (hole) of the needle. The needle will now be threaded.

2. Tie both ends of the yarn into a double knot. Starting at the back of the fabric and at the edge of a colour section, bring the needle up through a hole matching the colour yarn.

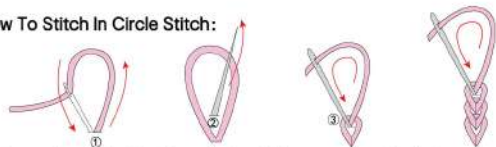
1 How To Stitch In Running Stitch:



Thread the needle into the fabric from the back. Then, come up through the fabric and make one straight stitch. Leave a little space and then come back up through the fabric.

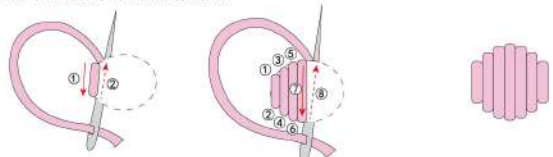
Embroidery Kit Sun

2 How To Stitch In Circle Stitch:



Thread the needle into the fabric from the back. Then come up with the thread and poke back near the initial stitch but keeping the thread in a circle. Come back up a stitch from middle of the circle and poke back near the last stitch, continue to do this.

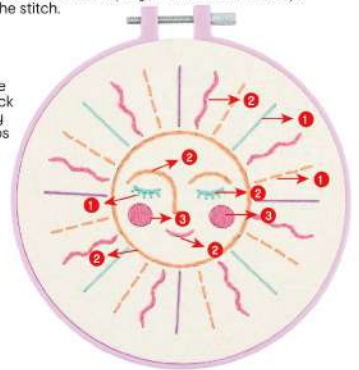
3 How To Stitch In Satin Stitch:



Thread the needle into the fabric from the back. Then come up with the thread and place it underneath the initial hole, making a vertical stitch. Go to the top again and come back up. Continue to do this, going top to bottom with the stitch.

How To End The Stitch:

End a stitching pattern by leaving the needle and thread on the underside of the fabric. Take the leftover thread and draw it through the back of the stitches with the needle, snipping off any leftover thread. This hides the thread and keeps it securely in place, so you don't need to knot the thread end.



ADULT SUPERVISION IS RECOMMENDED.

WARNING: THE PRODUCT CONTAINS FUNCTIONAL SHARP POINTS/SHARP EDGES. PLEASE USE AS INTENDED.

WARNING:
LONG CORD AND SMALL PARTS. STRANGULATION AND CHOKING HAZARD. NOT FOR CHILDREN UNDER 3 YEARS.

210x297mm