



AR Teeth

Professional Model

WELCOME TO THE WORLD OF AUGMENTED REALITY

AR Human Science Series



Contents

1. What is included	P1
2. Download App	P2
3. AR Human Science App Interface	P7
4. Re-launch AR Human Science App	P16
5. Assembling the Teeth Model	P19

*device not included

WARNING!

Not suitable for children under 36 months due to small parts. Choking hazard. Use with care and only under supervision of adults. Keep this manual for future reference and safety reasons.

What is included

1. AR Human Science from Devar AR platform
2. 1 permanent teeth model
3. 1 deciduous teeth model
4. Stand



AR HUMAN SCIENCE
Educational activities



DOWNLOAD APP

STEP 1 Download Devar App

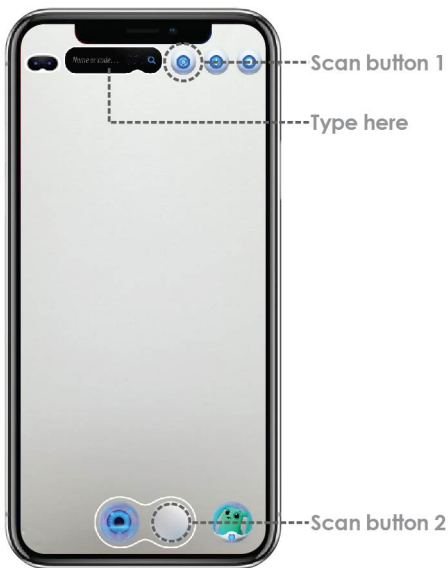
AR Educational Platform

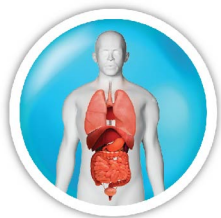


Scan QR Code



STEP 2 Open Devar App and scan QR Code to download content or type 'AR Human Science'



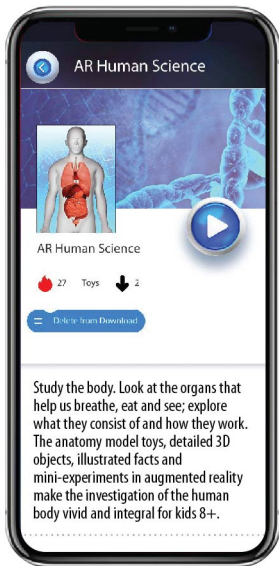


AR HUMAN SCIENCE
Educational activites



Scan QR Code

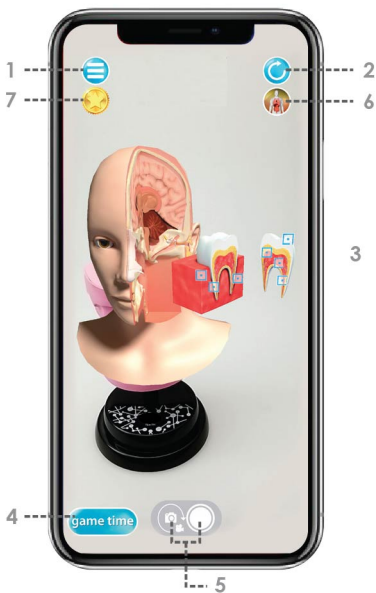
STEP 3 Press '  ' button to start the AR Human Science



STEP 4 Point the device's camera at the model and you will see the Teeth in AR. The activation is complete.



AR Human Science App Interface



- 1) Drop-down menu: Exit App / Change Language / App guide
- 2) Refresh: Refresh the AR model
- 3) Organ parts: Tap on the organ model parts to learn interesting facts
- 4) Game Time: Tap the 'Game Time' button to start the quiz game and check your knowledge of anatomy
- 5) Camera & Video:
Take photos or record videos with the AR anatomy models
- 6) Collection: Check your AR Human Science Collection
- 7) Subscribe: More funny animations and peculiar facts here

1) Drop-down menu

Exit App / Change Language / App guide

App guide

Change Language

Exit App



2) Refresh

Refresh the AR model



3) Organ parts

Tap on the organ model parts to learn interesting facts



4) Game Time

Tap the 'Game time' button to start the quiz game and check your knowledge of anatomy



5) Camera & Video

Take photos or record videos with the AR anatomy models



6) Collection

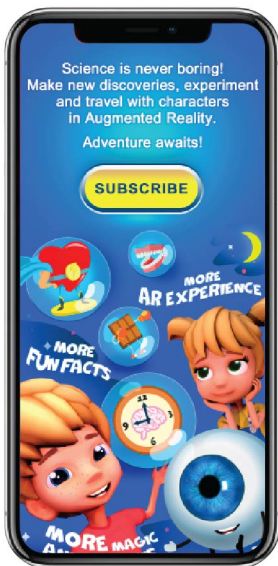
Check your AR Human Science Collection.

AR Human Science comes with 6 topics, you can select different models after you purchased the respective toy



7) Subscribe

More funny animations and peculiar facts here. Click on the icon and go further with the characters that assist you on the journey. They won't let you get bored!



Re-launch AR Human Science

STEP 1 Open Devar App by clicking Devar App icon or scanning QR code

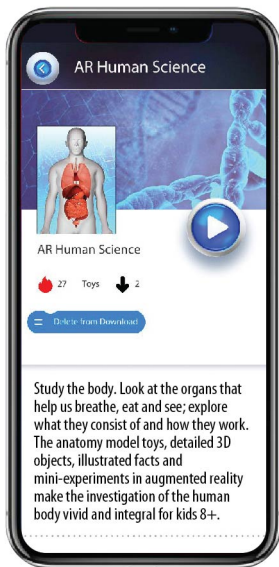


Scan QR Code

STEP 2 You can scan QR code or search from the Download button



STEP 3 Press '  ' button to start the AR Human Science



Assembling the Teeth Model

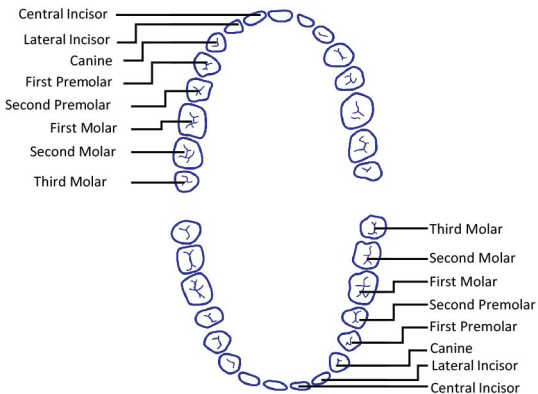


STEP 1 Permanent teeth model

Assemble 1) Central Incisor,
2) Canine , 3) Second Premolar,
4) First Molar



Permanent teeth model



Maxilla (Upper jaw)	
Name	Approximate time (years)
Central Incisor	6-8
Lateral Incisor	7-9
Canine	9-12
1 st Premolar	8-11
2 nd Premolar	8-12
1 st Molar	5-7
2 nd Molar	10-14
3 rd Molar	17 onwards

Mandible (Jaw bone)	
Name	Approximate time (years)
Central Incisor	6-8
Lateral Incisor	6-8
Canine	8-12
1 st Premolar	8-12
2 nd Premolar	9-13
1 st Molar	5-7
2 nd Molar	10-13
3 rd Molar	17 onwards

STEP 2 Deciduous teeth model

Name of parts: 1) Central Incisor, 2) Lateral Incisor, 3) Canine, 4) First Molar, 5) Second Molar



Maxilla (Upper jaw)	
Name	Approximate Time (Months)
Central Incisor	9-10
Lateral Incisor	10-12
Canine	16-19
1 st Molar	14-17
2 nd Molar	25-29

Mandible (Jaw bone)	
Name	Approximate Time (Months)
Central Incisor	6-9
Lateral Incisor	12-14
Canine	17-20
1 st Molar	15-18
2 nd Molar	24-27

Different kinds of teeth



The Incisors are the teeth in the very front. There are four on the top and four on bottom. They are the sharpest teeth shaped like tiny chisels, with flat ends that are somewhat sharp. These teeth are used for cutting and chopping food.



The Canines are the pointy teeth beside your incisors. There are four of them, two on the top and two on the bottom. As these teeth are pointy and sharp, they help to tear food. As they're meant for grasping and tearing food, they have very long roots.

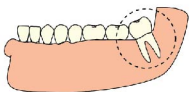


Premolars are located just behind your Canine teeth which are also called bicuspid teeth. You have eight premolars in all, four on top and four on the bottom. Their shape is completely different from both incisors and canines. Premolars are bigger, stronger, have ridges and a flatter chewing surface, which make them perfect for crushing and grinding food.



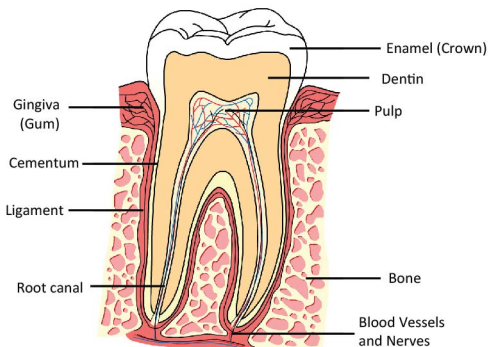
The Molars are the last teeth towards the back of your mouth. If you open your mouth really wide, you'll see them. You have eight of these, four on the top and four on the bottom. Sometimes these are called your 6-year molars and your 12-year molars because that is around the time when they come in. Molars are the toughest of the bunch. They are even wider and stronger than premolars, and they have more ridges. Molars work closely with your tongue to help you swallow food.

Different kinds of teeth



Wisdom Teeth are the last teeth a person gets. These are also called third molars. They are all the way at the back of the mouth, one in each corner. Wisdom teeth usually appear between the ages of 17 and 25.

Most adults have four wisdom teeth, but it is possible to have more, in which case they are called supernumerary teeth. Wisdom teeth commonly affect other teeth as they develop, becoming impacted or "coming in sideways". They are often extracted when this occurs. Some people believe that wisdom teeth may have been used by people millions of years ago to help them chew food. It's believed that they're called wisdom teeth because they come in later in life, when a young person is older and wiser.



Cross-section of a tooth

43-149-100

MADE IN CHINA

© KMART AUSTRALIA LIMITED

FOR AU / NZ: IMPORTED FOR KMART STORES IN AUSTRALIA AND NEW ZEALAND.

KMART AUSTRALIA - 690 SPRINGVALE ROAD, MULGRAVE, VIC 3170 AUSTRALIA.

KMART NEW ZEALAND - REGIONAL OFFICE C/O KMART PAPATOETOE STORE,
HUNTERS PLAZA, GREAT SOUTH ROAD, PAPATOETOE, AUCKLAND, NEW ZEALAND.

KMART CUSTOMER SERVICE

AU: 1800 124 125 NZ: 0800 945 995