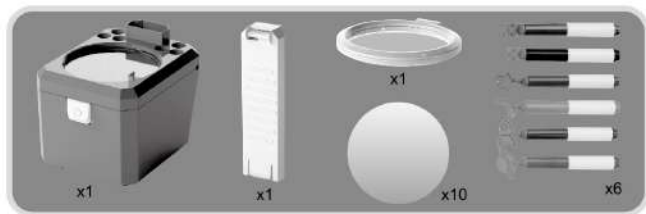


SCIENCE PROJECTOR

6+ YEARS

INSTRUCTIONS

CONTENTS:



ASSEMBLY INSTRUCTIONS:



Caution: Product assembly is one-time only, disassembly may damage the product.

BATTERY INSTALLATION:



HOW TO PLAY:

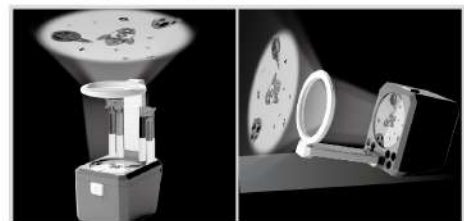
1. You can use the included markers to draw or doodle on 1 or more reusable discs. Please keep the drawing surface and hands clean and dry before using the markers.
Note: Marker drawings on the disc can be easily wiped off with a damp paper towel.



2. Place your drawing on top of the base as shown, turn on the switch and project your drawing onto the ceiling or walls.

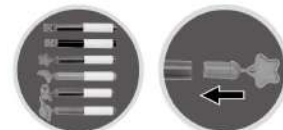


3. There are two projection methods. Position the projector vertically to project the drawing onto the ceiling or lay the projector flat to project the drawing onto the wall.



Caution: Do not draw directly on top of the base, as the marker may stain the surface and block light from passing through the disc.

4. You can swap the caps of the markers with the included accessories.



WARNING: BATTERIES ARE TO BE INSERTED WITH THE CORRECT POLARITY (+ AND -) DO NOT MIX DIFFERENT TYPES OF BATTERIES OR NEW AND USED BATTERIES. NON-RECHARGEABLE BATTERIES ARE NOT TO BE RECHARGED. RECHARGEABLE BATTERIES ARE ONLY TO BE CHARGED UNDER ADULT SUPERVISION. THE SUPPLY TERMINALS ARE NOT TO BE SHORT-CIRCUITED. REMOVE BATTERIES FROM THE TOY WHEN NOT IN USE FOR AN EXTENDED TIME OR WHEN BATTERIES BECOME EXHAUSTED. BATTERY INSTALLATION BY AN ADULT IS REQUIRED. DISPOSE OF BATTERIES RESPONSIBLY. DO NOT DISPOSE OF IN FIRE.

WARNING: CHOKING HAZARD
SMALL PARTS. NOT SUITABLE FOR CHILDREN UNDER 3 YEARS.

WARNING: FOR SAFETY REASONS, REMOVE ALL TAGS, LABELS AND PLASTIC FASTENERS BEFORE GIVING THIS TOY TO YOUR CHILD.

KEYCODE: 43149865

ADULT ASSEMBLY REQUIRED.
PRODUCT MAY VARY SLIGHTLY FROM IMAGE SHOWN.
PLEASE KEEP THE PACKAGING FOR FUTURE REFERENCE.
READ THE INSTRUCTIONS BEFORE OPERATING THE PRODUCT.