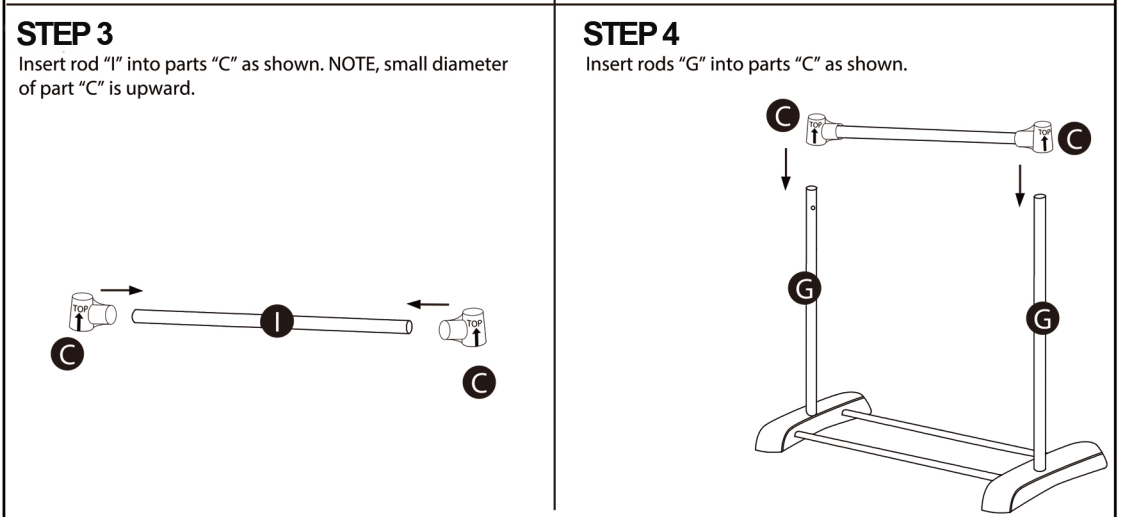
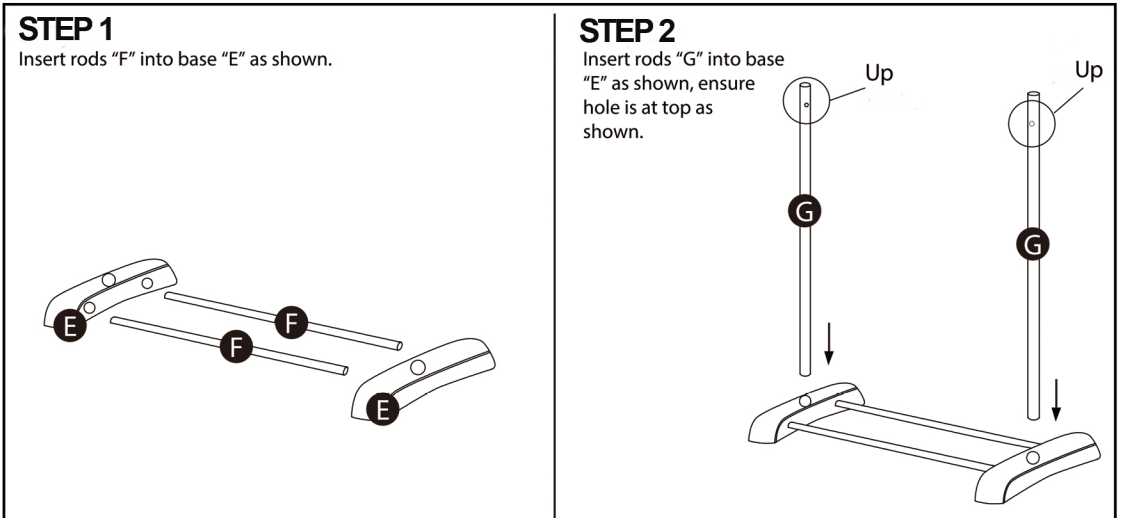
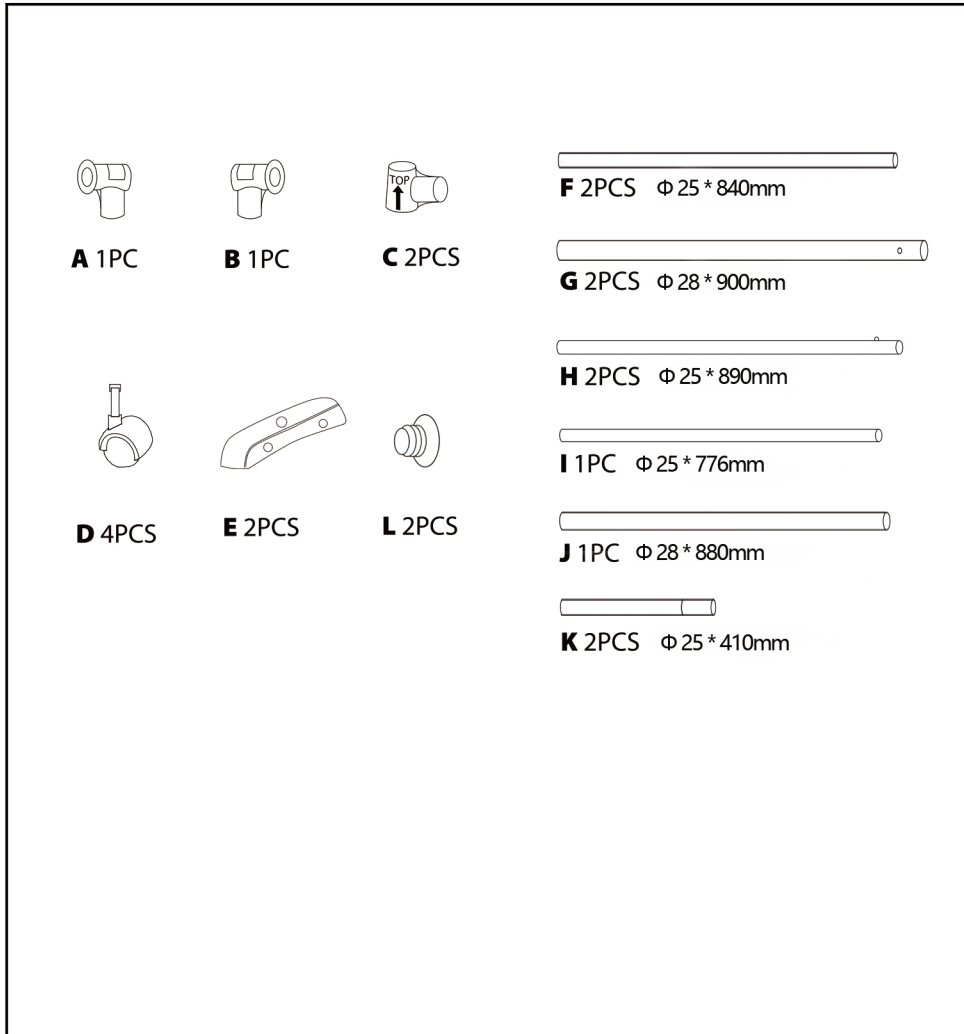


Assembly Instructions

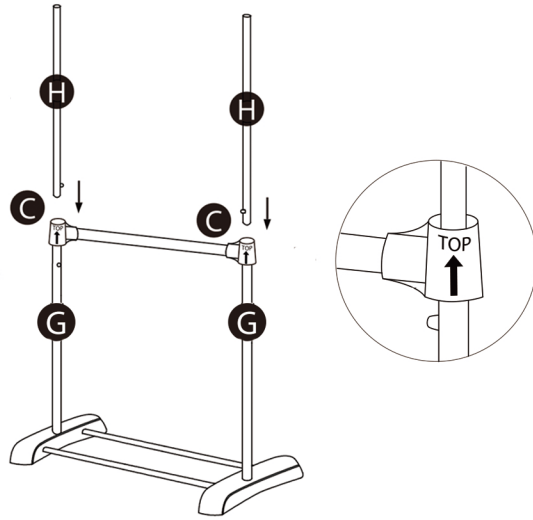
43152452 2 Tier Garment Rack

MAXIMUM SAFE LOAD: 8KGS FOR TOP CLOTHES RAIL, 6KGS FOR MIDDLE CLOTHES RAIL, 10KGS FOR THE BOTTOM SHELF, 24KGS IN TOTAL



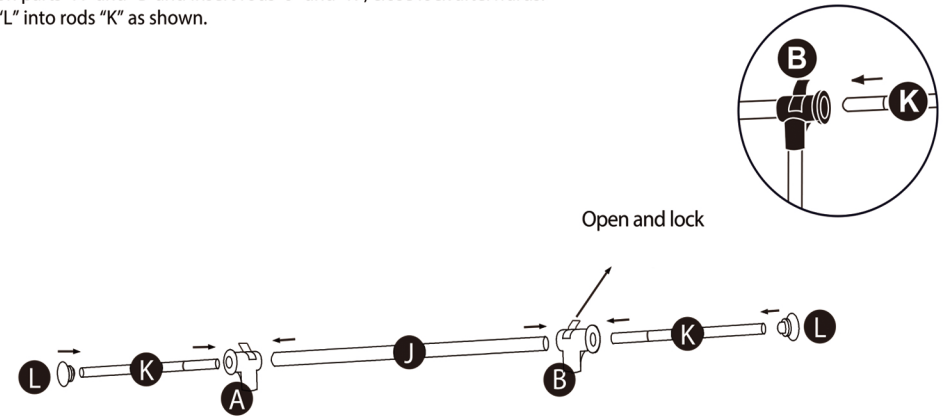
STEP 5

Insert rods "H" through Parts "C" and into rods "G" as shown.
NOTE, allow the pin in rods "H" to come through the holes in rods "G".



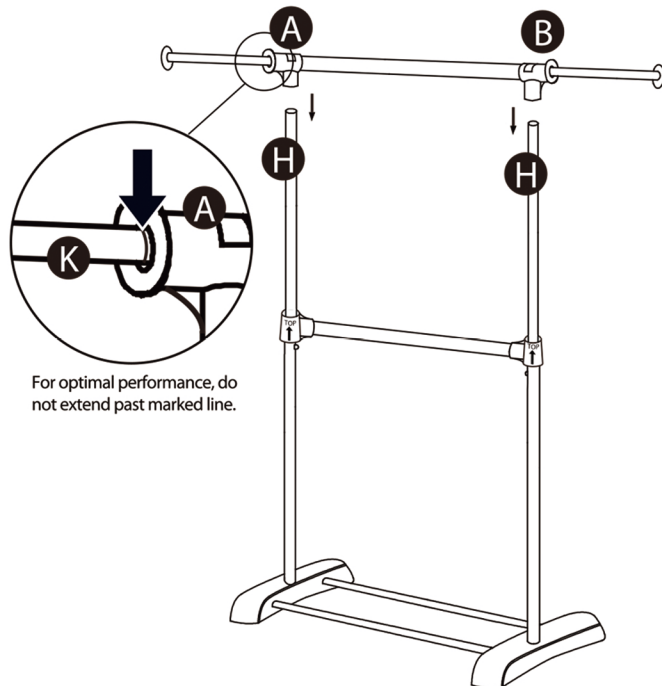
STEP 6

Open locks on parts "A" and "B" and insert rods "J" and "K", close lock afterwards.
Insert parts "L" into rods "K" as shown.



STEP 7

Insert rods "H" into parts "A" and "B" as shown.



STEP 8

Insert castors "D" into base "E" as shown.

