

12 Month Warranty

Thank you for your purchase from Kmart.

Kmart Australia Ltd warrants your new product to be free from defects in materials and workmanship for the period stated above, from the date of purchase, provided that the product is used in accordance with accompanying recommendations or instructions where provided. This warranty is in addition to your rights under the Australian Consumer Law. Kmart will bear the reasonable expense of claiming the warranty. This warranty will no longer apply where the defect is a result of alteration, accident, misuse, abuse or neglect.

Please retain your receipt as proof of purchase and contact our Customer Service Centre on 1800 124 125 (Australia) or 0800 945 995 (New Zealand) or alternatively, via Customer Help at Kmart.com.au for any difficulties with your product. Warranty claims and claims for expense incurred in returning this product can be addressed to our Customer Service Centre at 690 Springvale Rd, Mulgrave VIC 3170.

Our goods come with guarantees that cannot be excluded under the Australian Consumer Law. You are entitled to a replacement or refund for a major failure and compensation for any other reasonably foreseeable loss or damage. You are also entitled to have the goods repaired or replaced if the goods fail to be of acceptable quality and the failure does not amount to a major failure.

For New Zealand customers, this warranty is in addition to statutory rights observed under New Zealand legislation.

-12-

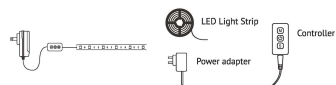
anko

LED Strip Lights 5M Magic
Keycode: 43157112
Instruction manual



Specification
AC adapter XY242-1202000H-AW
Input: 220V-240V/50/60Hz
Output: 0.1-12V/2A
Length: 5M

INSTALLATION:



1. Fully unroll the strip light before use.
2. Download the APP properly before installation.
3. For stand-alone use only. Do not connect with other strip light.
4. Luminaires not suitable for covering with thermally insulating material.
5. Do not block the controller with metal objects.
6. The light source of this luminaire is not replaceable, when the light source reaches its end of life, the whole luminaire shall be replaced.
7. When breakage or damage to lamps occurs, the chain must not be used/energized but disposed of safely.
8. For indoor use only.
9. Before adhering strip lights, clean the surface of the area you will be placing the lights on. It is recommended to apply your strip lights on smooth stable surfaces. It should not be placed on rough, textured or painted wall surfaces or any surfaces that can bend or move.

Product Instructions:



Controller button functions:

Mode button "M": Switching the effect.
ON/OFF button "O": Turning on or off the LED light.
Speed button "S": Adjusting the speed of the non-music effects.

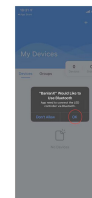
-02-

Part One: How to install App and connect to the strip light

1. The strip light is controlled by APP; both iOS and Android version are available; Apple devices are required iOS 10.0 or later, Android devices are required Android 4.4 or later; You can scan the QR code to download and install or search "BarianX" in the App Store or Google Play to find the app.

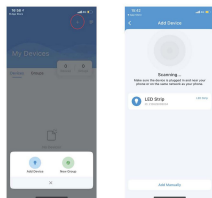


2. Open the BarianX APP. Choose OK and open the phone Bluetooth.



-03-

3. Press "+" button in the up right corner to add device. When find the name of the strip light shows, choose it.



4. Allow the App to connect with your microphone, choose OK.



-04-

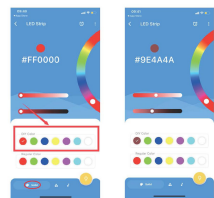
Part Two: How to control the strip light with APP

1. Solid mode

It will show you two selections--- DIY color and regular color.

In DIY color mode:

Click the round dot to select the position you want to save, slide the color disk to choose the color you like, adjust the brightness and saturation of the light color. The system can save the color you set and you can operate it next time directly.

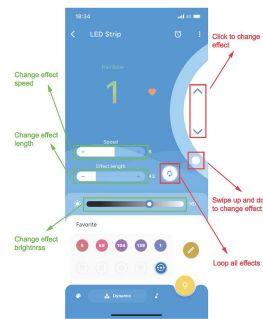


In regular color mode: you can choose the regular color that system setup.

-05-

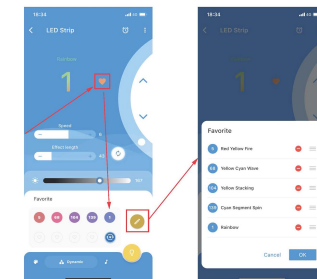
2. Dynamic mode

There are 142 dynamic modes for you to select by click the ^ up and v down button or adjust the small white round dot. You can adjust the speed, brightness and effect length; you can also let the controller automatically loop through all the built-in effects.



If you meet your favorite light mode you can press the heart button and it will be retained on your favorite list. Press the pencil button, you can edit the favorite list, adjust the sequence or remove the modes. You can let the controller loop through all the favorite effects in a loop.

-06-

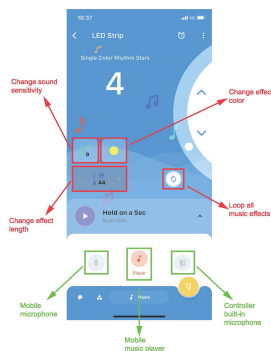


Loop all favorite effects

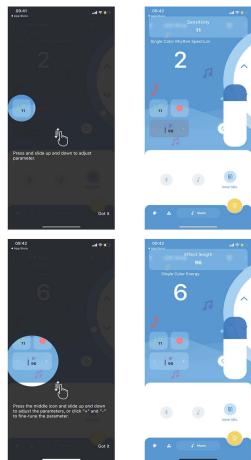
-07-

3. Music active mode

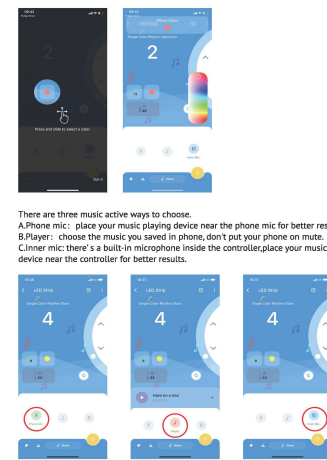
There are 18 music active modes for you to choose. You can edit the sensitive/effect length/effect color of the strip light.
PS: The sensitive/effect length/effect color only be used in some modes.



-08-



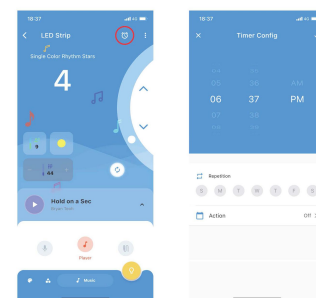
-09-



-10-

4. Timer setting

Press the clock button, you can set a timer for the strip light. Please note that all set timing events will be deleted when the controller is powered off.



-11-