

Front

Back

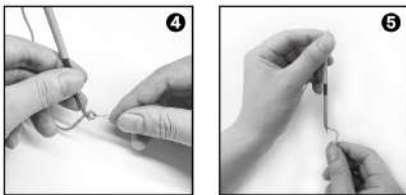
anko

Punch Needle Instruction Manual

KIT INCLUDES:



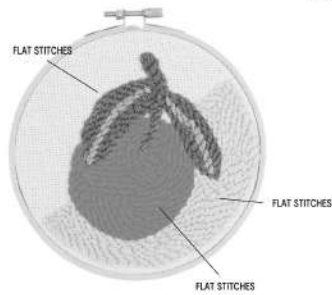
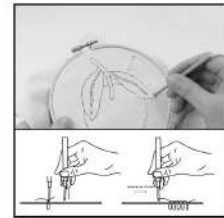
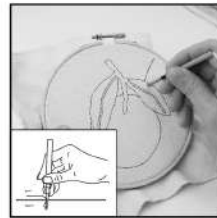
HOW TO THREAD A NEEDLE:



Insert the threader through the hole of the needle tip and place the end of the yarn into the threader and pull back out of the hole. Remove the yarn from the threader. Threading is completed.

148x210mm

FLAT STITCHES



TIPS:

The punch needle should penetrate all the way through the fabric, so that the grip of the needle touches the fabric. The needle must be pushed all the way in on each stitch, to create an even look. Lift needle out of fabric, just enough to move onto next stitch. Keep the needle as close to the fabric as possible. Lifting the needle too high shortens the loops on the front of the design and creates unwanted loops on the back.

MADE IN CHINA
© KIMART AUSTRALIA LIMITED
FOR AU / NZ, IMPORTED FOR KIMART STORES IN AUSTRALIA AND NEW ZEALAND
KIMART AUSTRALIA - 410 SPRINGALE ROAD, MULLGRAVE, VIC, 3170 AUSTRALIA
KIMART NEW ZEALAND - REGIONAL OFFICE FOR KIMART PRODUCTS STORE
HUNTERS PLAZA, GREAT SOUTH ROAD, PARNODICE, AUCKLAND, NEW ZEALAND
KIMART CUSTOMER SERVICE
AUS: 1800 524 125 / NZ: 0900 945 995

148x210mm