

Front

Back

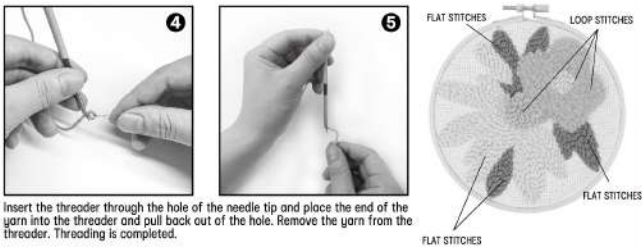
anko

# Punch Needle Instruction Manual

## KIT INCLUDES:



## HOW TO THREAD A NEEDLE:



148x210mm

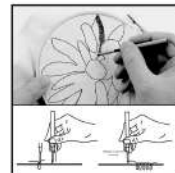


Use a marker to trace the outline onto the back of the fabric. This will make it easier to follow the design on the reverse side.

## FLAT STITCHES



Place the fabric in the hoop with the outlined side of fabric facing upwards.

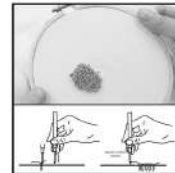


Refer to the image on box for yarn colour. Holding the needle like a pencil press the needle all the way through the fabric, so the grip of the needle touches the fabric. Then, lift needle out of fabric just enough to move onto the next stitch.

## LOOP STITCHES



Flip the hoop to the reverse side of the fabric.



Using the same technique as flat stitches, once you have filled in the area, turn back and go over stitches once more to complete loop stitch.

## TIPS:

The punch needle should penetrate all the way through the fabric, so that the grip of the needle touches the fabric. The needle must be pushed all the way in on each stitch, to create an even look. Lift needle out of fabric, just enough to move onto next stitch. Keep the needle as close to the fabric as possible. Lifting the needle too high shortens the loops on the front of the design and creates unwanted loops on the back.

MADE IN CHINA  
© KIMART AUSTRALIA LIMITED  
FOR AU / NZ IMPORTED FOR KIMART STORES IN AUSTRALIA AND NEW ZEALAND  
KIMART AUSTRALIA - 410 SPRINGALE ROAD, MULGRAVE, VIC, 3170 AUSTRALIA  
KIMART NEW ZEALAND - HEADQUARTERS OFFICE: 210 KIMART PARADISE STORE,  
HUNTERS PLAZA, GREAT SOUTH ROAD, PARADISE, AUCKLAND, NEW ZEALAND.  
KIMART CUSTOMER SERVICE  
AUS: 1800 524 125 / NZ: 0900 945 995

148x210mm