

PAPER:

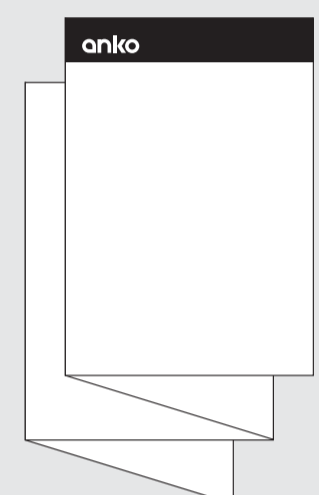
80gsm
Bright white uncoated paper

PRINT COLOURS:

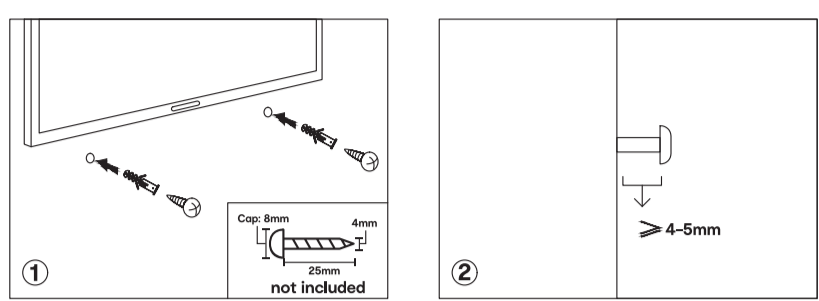
BLACK	GREY
C:0 M:0 Y:0 K:100	C:0 M:0 Y:0 K:70

PRINT FINISH:

Double sided
Folded in the centre

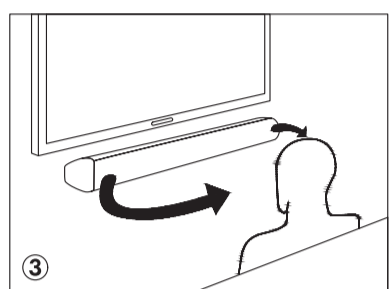


Quick System Installation Guide

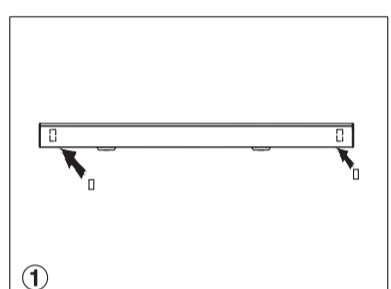


Make the holes with the corresponding drill bit according to the type of wall, set 2pcs plastic dowel and screw (BA 4*25mm, cap: 8mm) into the hole (dowel and screw not included).

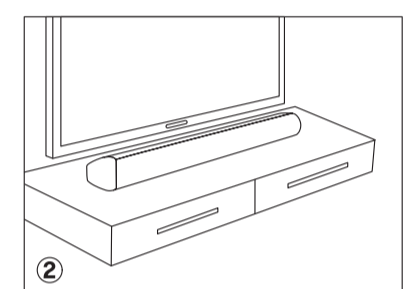
It is advisable to leave 4mm-5mm between the head of the screw and the wall to minimize the inclination angle of the soundbar.



For a better sound experience, it is advisable to place the soundbar at the same height of the ear.



Paste the foot pad on both side under the sound bar and ensure foot pad paste firmly.



Place on the TV bench to use.

Safety Information

1. Read the user manual.
2. Keep the user manual.
3. Heed all Warnings.
4. Follow all instructions.
5. Do not clean the apparatus near or with water.
6. Do not block any ventilation openings. Install in accordance with the manufacturer's instructions.
7. Do not install near any heat sources such as radiators, heat registers, stoves, or other apparatus (including amplifiers) that produce heat.
8. Protect the power from being walked on or pinched particularly at plugs, convenience receptacles, and the point where they exit from the apparatus.
9. Only use attachments/accessories specified by the manufacturer.
10. Unplug this apparatus during light storms or when unused for long periods of time.
11. Refer all servicing to qualified service personnel. Servicing is required when the apparatus has been damaged in a way, such as power-supply cord or plug is damaged, liquid has been spilled or objects have fallen into the apparatus, the apparatus has been exposed to the rain or moisture, does not operate normally or has been dropped.
12. No naked flame sources, such as lit candles, should be placed on the apparatus.
13. Dispose of used electrical products and batteries safely according to your local authority and regulations.

ADDITIONAL WARNINGS

The apparatus shall not be exposed to dripping or splashing and no objects filled with liquid, such as vases, shall be placed on the apparatus.

Main plug is used to disconnect device and it should remain readily operable during intended use. In order to disconnect the apparatus from the mains completely, the mains plug should be disconnected from the main socket outlet completely.

Battery shall not be exposed to excessive heat such as sunshine, fire or the like.

IMPORTANT: Please read all instructions carefully before use and keep for future reference.

⚠ Risk of electric shock. Do not open.

⚠ Read all instructions carefully before use and keep for future reference.

When servicing, use only identical replacement parts.

12 month warranty

Thank you for your purchase from Kmart.

Kmart Australia Ltd warrants your new product to be free from defects in materials and workmanship for the period stated above, from the date of purchase, provided that the product is used in accordance with the accompanying recommendations or instructions where provided. This warranty is in addition to your rights under the Australian Consumer Law. Kmart will provide you with your choice of a refund, repair or exchange (where possible) for this product if it becomes defective within the warranty period. Kmart will bear the reasonable expense of claiming the warranty. This warranty will no longer apply where the defect is a result of alteration, accident, misuse, abuse or neglect.

Please retain your receipt as proof of purchase and contact our Customer Service Centre on **1800 124 125 (Australia)** or **0800 945 995 (New Zealand)** or alternatively, via Customer Help at **kmart.com.au** for any difficulties with your product. Warranty claims and claims for expense incurred in returning this product can be addressed to our Customer Service Centre at 690 Springvale Rd, Mulgrave Vic 3170. Our goods come with guarantees that cannot be excluded under the Australian Consumer Law. You are entitled to a replacement or refund for a major failure and compensation for any other reasonably foreseeable loss or damage. You are also entitled to have the goods repaired or replaced if the goods fail to be of acceptable quality and the failure does not amount to a major failure.

For New Zealand customers, this warranty is in addition to statutory rights observed under New Zealand legislation.

WARNING ▶ Do not dispose of unit in fire or water. ▶ Never attempt to disassemble and reassemble. Waste electrical products should not be disposed of with household waste, please recycle where facilities exist. Check with your local authority for recycle advice. ▶ Keep your device and all accessories out of reach of children and animals. Small parts may cause choking or serious injury if swallowed. ▶ Avoid exposing your device to very cold or very hot temperatures (below -10°C or above 45°C). ▶ Extreme temperatures can cause deforming of the device and reduce the charging capacity and life of your device. ▶ Do not allow your device to get wet, liquids can cause serious damage. Do not handle your device with wet hands.



Specifications

Adaptor:

- ▶ Brand: Tojeinn
- ▶ Model: TY16001331/m
- ▶ Input: 100-240V~, 50/60Hz, 0.8A
- ▶ Output: DC18V1.33A
- ▶ Work temperature: -10~+45°C

Soundbar:

- ▶ Power Supply: DC 18V/1.33A
- ▶ Output Power: 24W @±10% THD
- ▶ Channel: 2.0CH
- ▶ Speaker Size & Number of Speakers: 2.0"×2
- ▶ Working environment (Temperature): -10~+45°C
- ▶ Relative Humidity: 5%-90%
- ▶ Frequency Response: 90Hz-20KHz
- ▶ Bluetooth Version: V5.0
- ▶ Bluetooth Distance: Approx 10M
- ▶ Dimension: L80.7×W6.5×H6.5cm

Controls And Functions

Side View/Control Buttons



- ① --- Power ON/OFF
- ② --- Mode
- ③ --- Next (short press)/VOL+ (long press)
- ④ --- Prev (short press)/VOL- (long press)
- ⑤ --- DC Power Input
- ⑦ --- Arc-in Input
- ⑥ --- Aux-in Input

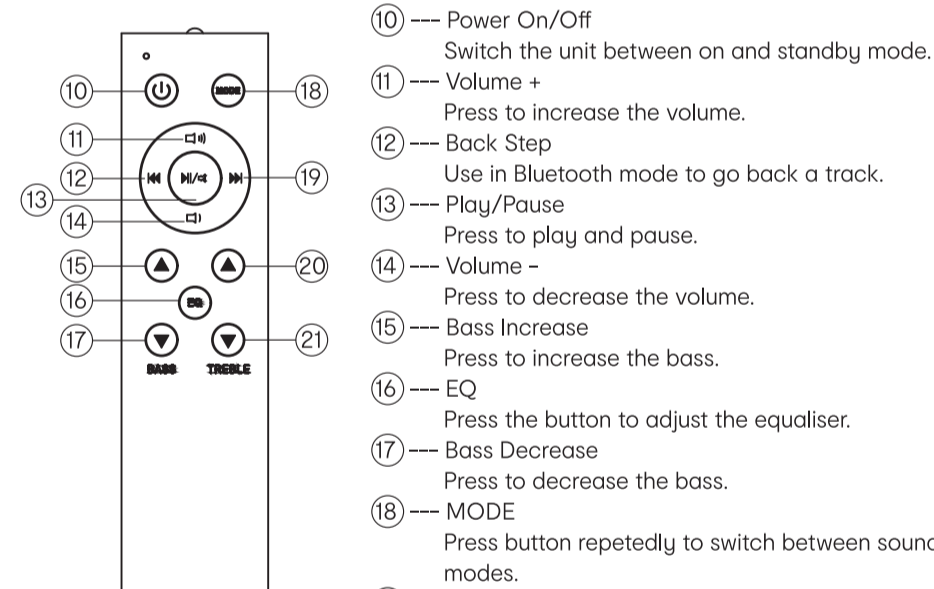
Back View



Mode Indicator Lights

State	Indicator Lights
Bluetooth connected	Blue
Bluetooth ready	Flashing blue
Aux in mode	Green
ARC mode	Purple

Remote Control

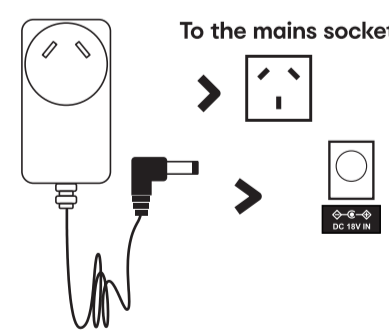


- ⑩ --- Power On/Off
Switch the unit between on and standby mode.
- ⑪ --- Volume +
Press to increase the volume.
- ⑫ --- Back Step
- ⑬ --- Play/Pause
Press to play and pause.
- ⑭ --- Volume -
Press to decrease the volume.
- ⑮ --- Bass Increase
Press to increase the bass.
- ⑯ --- EQ
Press the button to adjust the equaliser.
- ⑰ --- Bass Decrease
Press to decrease the bass.
- ⑱ --- MODE
Press button repeatedly to switch between soundbar modes.
- ⑲ --- Forward Step
Use in Bluetooth mode to forward a track.
- ⑳ --- Treble Increase
Press to increase the treble.
- ㉑ --- Treble Decrease
Press to decrease the treble.

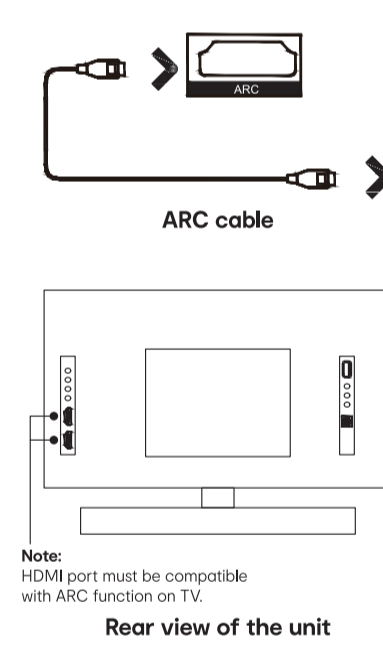
Instructions Guide

Connecting to the Mains Supply

- ▶ Ensure that the power supply voltage is in the voltage of 100V-240V.
- ▶ Please use provided adaptor to ensure unit can work properly.
- ▶ Connecting the unit to any other power source may cause damage to the unit.
- ▶ Unwind the mains cable to its full length.
- ▶ Connect the mains plug to a mains socket.
- ▶ Make sure the mains plug is fully inserted into the mains socket.
- ▶ Connect the adaptor to the unit via the DC input Socket.



- ⚠ Ensure all audio connections of the unit are connected before connecting to the mains power socket. Unplug the power cord from the outlet when the unit is not in use for an extended period of time.



Note:
HDMI port must be compatible with ARC function on TV.

Rear view of the unit

Using the ARC Input

- ▶ You will need: An audio source with an ARC Audio Output and a ARC Audio cable (not included).
- ▶ Connect the ARC Audio cable to the ARC input on the soundbar.
- ▶ Press the POWER button on the soundbar or POWER button directly on the remote control (Rem.10) to switch on the unit.
- ▶ Press the MODE button on the remote control (Rem.18) to switch to ARC mode or select the Mode button on main unit repeatedly to select the RC mode.
- ▶ Using the native controls on your connected device, make sure the audio settings are set to ARC or HDMI Audio and are turned on. Audio from the connected audio source will now be played through the speakers.
- ▶ If you are using this device with a TV for the first time and there is no sound output, you may have the incorrect audio setting assigned on your TV. Please check your TV audio output setting is set to PCM/2-CH.

Using the Bluetooth Operation

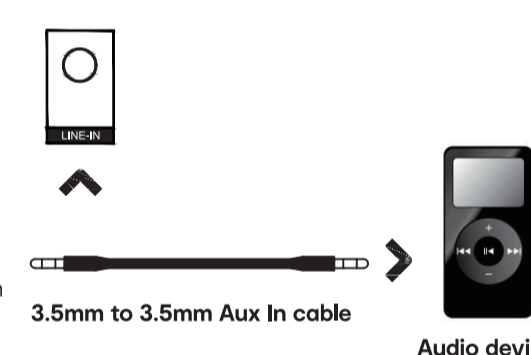
- ▶ Pairing a Bluetooth Device for the First Time
- ▶ Press the POWER button on the unit or the POWER button on the remote control (Rem.10) to switch on the unit.
- ▶ Select and press the MODE button repeatedly on the remote control until in Bluetooth mode (Rem.18) or press the Mode button repeatedly on the soundbar to enter Bluetooth mode.
- ▶ Using the native controls on your Bluetooth device, select the "KM43173860" in your Bluetooth settings to pair.
- ▶ Refer to the user manual for your specific device for instructions on pairing and connecting Bluetooth devices.
- ▶ When successfully paired and connected, a prompt tone will issue from the unit. After initial pairing, the unit will stay paired unless unpaired manually by the user.
- ▶ If your device should become unpaired or you find it is unable to connect, repeat the above steps.

Playing Audio Wirelessly

- ▶ Follow the instructions for pairing a Bluetooth device.
- ▶ Use the native controls on the connected Bluetooth Device to select a track.
- ▶ To Play/Pause the track or Skip Forwards/Backwards to a selected track, use the remote control (Rem.12,13,19).
- ▶ Audio played through the connected Bluetooth device will now be heard through the speakers.

Using the AUX IN Cable

- ▶ Plug one end of a 3.5mm to 3.5mm Line In cable (included) into the Line In port on the unit.
- ▶ Plug the other end of the cable into the audio output/headphone output on an MP3 player or other audio source.
- ▶ Press the Power button on the soundbar or POWER button directly on the remote control (Rem.10) to switch on the unit.
- ▶ Press the Mode button repeatedly on the soundbar or press the MODE button on remote control (Rem.18) repeatedly to enter AUX in mode.
- ▶ Audio played through the connected device will now be heard through the speakers.



Trouble shooting

If the soundbar does not work properly as desired, please check the following.

Malfunction	Possible causes/measures
No power / function	Check whether the power is switched on or off at the wall. Check whether the power adaptor is properly connected to power outlet or not.
No sound	Check whether cables are properly installed. If they are, please try alternative cable to connect to your TV if possible. Check unit is out of standby and in mode.
No sound from bluetooth connection	Forget the soundbar from your device and reconnect.
Function disturbance	Switch off and unplug the unit. Leave it for 2 minutes and switch it on again. If a particular mode is causing problems, please try an alternative connection to your TV such as Optical or Bluetooth.
Remote control does not work [properly]	Check whether the battery has run out or not. Replace with a new one if necessary. Check whether there is obstacle on the front of remote sensor.