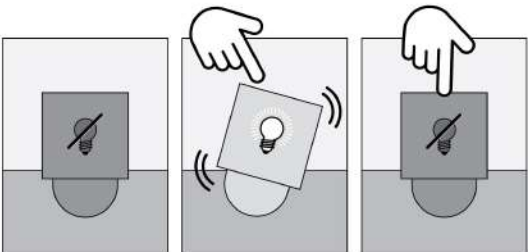


SWAY LIGHT INSTRUCTIONS

Mode d'emploi • Gebrauchshinweise • Instrucciones de uso • Istruzioni per l'uso • Gebruiksaanwijzingen • Instruções de utilização

FUNCTIONS

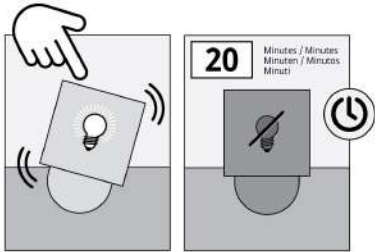
Les Fonctions / Funktionen / Funciones / Funzioni / Functies / Funções



Off / Arrêt / Aus
Apagado / Off
Uit / Desligado

On / Marche / An
Encendido / On
Aan / Ligado

Off / Arrêt / Aus
Apagado / Off
Uit / Desligado



On / Marche / An
Encendido / On
Aan / Ligado

Off / Arrêt / Aus
Apagado / Off
Uit / Desligado

SWAY LIGHT INSTRUCTIONS

Mode d'emploi • Gebrauchshinweise • Instrucciones de uso • Istruzioni per l'uso • Gebruiksaanwijzingen • Instruções de utilização

BATTERY INSTALLATION

Instructions d'installation / Installationsanleitung / Instrucciones de instalación / Istruzioni di installazione / Installatiehandleiding / Instruções de instalação

- Step 1: Insert the 3x 1.5V AAA batteries. Make sure the battery polarity is correct. The light will not work if the batteries are inserted incorrectly. The light will not work if the batteries are inserted incorrectly. The light will not work if the batteries are inserted incorrectly. The light will not work if the batteries are inserted incorrectly.
- Step 2: Press the top button. The light will turn on. The light will turn on for 20 minutes. The light will turn on for 20 minutes. The light will turn on for 20 minutes.
- Step 3: Press the top button. The light will turn off. The light will turn off. The light will turn off. The light will turn off.

Warning: Changes or modifications to this unit not expressly approved by the party responsible for compliance could void the user's warranty for this equipment. NOTE: This equipment has been tested and found to comply with the limits for Class B digital devices, pursuant to Part 15 of the FCC Rules. These limits are designed to provide reasonable protection against harmful interference in a residential installation. This equipment generates, uses and can radiate radio frequency energy and, if not used in accordance with the instructions, may cause harmful interference to radio communications.

Requires 3 x 1.5V AAA batteries
MADE IN CHINA
FOR AU / NZ: IMPORTED FOR SMART STORES IN AUSTRALIA AND NEW ZEALAND.

DESIGNED IN THE UK
PALADONE
TEL: +44 (0)1273 220087
WORKING TITLE: SWAY LIGHT INSTRUCTIONS
DATE OF CREATION: 25/11/20
THE MARK REGARDING THE INTELLECTUAL PROPERTY OF PALADONE PRODUCTS © 2016

SWAY LIGHT

PANTONE REFERENCES / FINISHES:
BLACK
CUTTERDUDE INFORMATION:
INDICATES CUT
CUTTERDUDE INFORMATION:
140 MM (W) X 210 MM (H)

43-183-524 25/22