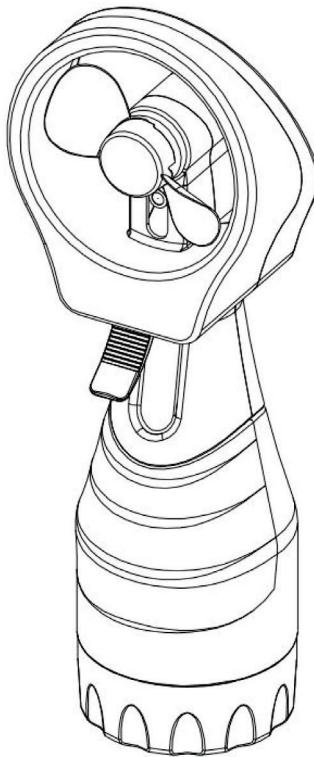


# anko

## Portable Mist Fan User Manual



Model No.: HEG8BF  
Rev 1

**Note:** The specifications and/or components of this appliance are subject to change without prior notice.

<b>1 Safety Instructions</b> .....	<b>3</b>
<b>2 Components</b> .....	<b>5</b>
<b>3 Instructions for Use</b> .....	<b>5</b>
<b>3.1 Battery Installation</b> .....	<b>5</b>
<b>3.2 Fill with Water</b> .....	<b>6</b>
<b>3.3 Water Spray Trigger</b> .....	<b>6</b>
<b>3.4 On / Off</b> .....	<b>7</b>
<b>3.5 To Mist spray</b> .....	<b>7</b>
<b>4 Care and Cleaning</b> .....	<b>7</b>
<b>5 Storage</b> .....	<b>7</b>
<b>6 Warranty Against Defect</b> .....	<b>8</b>

# 1 Safety Instructions

When using electrical appliances, basic safety precautions should always be followed, including the following:



Carefully read this instruction manual before using the Fan.

- Keep the Fan out of reach of young children.
- This appliance can be used by children aged from 8 years and above and persons with reduced physical, sensory or mental capabilities or lack of experience and knowledge if they have been given supervision or instruction concerning use of the appliance in a safe way and understand the hazards involved.
- Children should be supervised to ensure that they do not play with the Fan.
- Ensure children and babies do not play with plastic bags or any packaging materials.
- Do not disassemble the Fan, other than the battery compartment to change batteries. There are no user serviceable parts inside.
- **VERY IMPORTANT:**  
Do not immerse the Fan and in water or other liquids.
- Do Not mix new and old batteries, or batteries of different types (e.g. Alkaline with Non-Alkaline).
- The use of accessories not intended for use with this the Fan may cause injuries to the user or damage to the Fan.
- Do not place or leave near any heat sources such as radiators, heat registers, stoves, or other apparatus that produce heat.
- Do not operate the Fan underneath or near flammable or combustible materials (e.g. curtains).
- Cleaning and user maintenance shall not be made by children without supervision.
- If this the Fan is used by a third party, please supply the instruction manual with it.
- Do not insert or allow foreign objects to enter the Fan Blade as this may cause damage to the Fan and/or injury to the user.
- Do not leave the Fan running unattended.
- Avoid contacting moving parts. Keep fingers, hair, clothing and other items away from the Fan Blade during operation to prevent personal injury and/or damage to the Fan.

- No liability can be accepted for any damage caused by non-compliance with these instructions or any other improper use or mishandling of the Fan.
- This product has not been designed for any uses other than those specified in this manual.
- **ONLY** for domestic use. Industrial or commercial use invalidates the warranty.

### **WARNING**



Batteries may explode if disposed of in fire.



Contact your local waste management authority for more information on Battery Recycling and disposal regulations in your area.

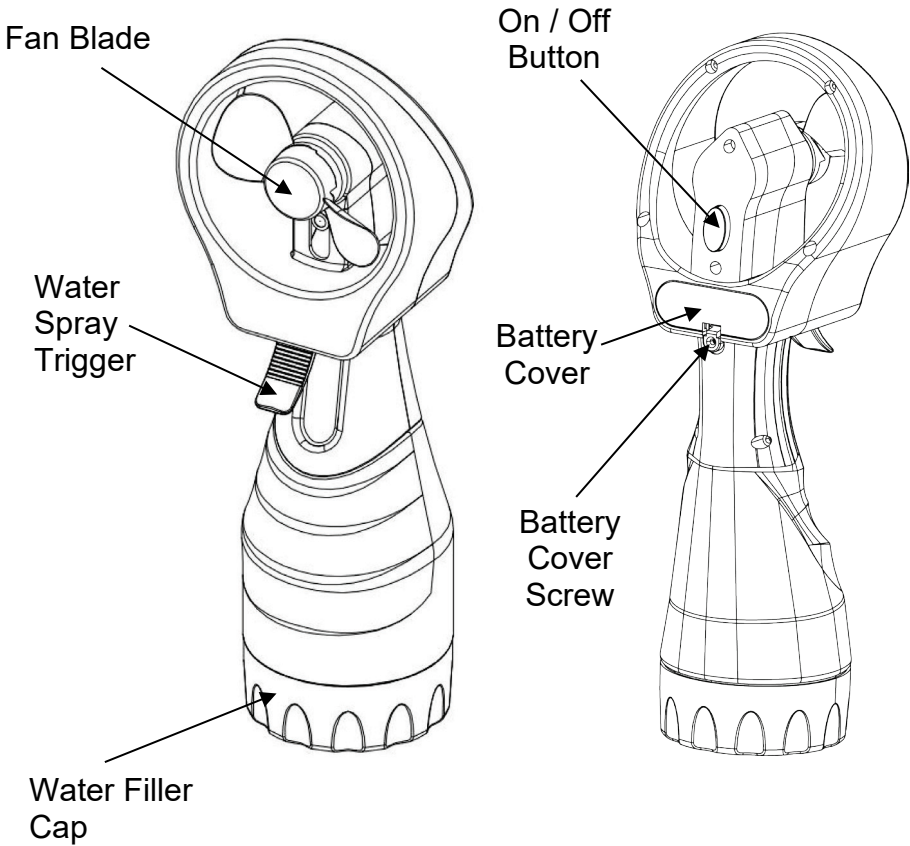


This symbol on the product or its packaging indicates:

Do not dispose of electrical appliances or batteries as unsorted municipal waste, use separate collection facilities. Contact your local council for information regarding the collection systems available. If electrical appliances are disposed of in landfills or dumps, hazardous substances can leak into the groundwater and get into the food chain, damaging your health and well-being. Please contact your local council or regional authority for more information on collection, reuse, and recycling programmes.

## **Read and Save These Instructions**

## 2 Components



## 3 Instructions for Use

### 3.1 Battery Installation

**Read the Safety Instruction first.**

**IMPORTANT:** Do Not mix new and old batteries, or batteries of different types (e.g. Alkaline with Non-Alkaline).

**Note:** 2 x AA batteries are not included.

To install the batteries, first remove the battery cover by unscrewing the small screw, pressing in the retaining clip, then lifting the battery cover off.

Insert the batteries inside the battery compartment matching polarity icons with those next to each battery compartment and then refit the cover, push down to clip in place and screw securely. **Note:** Do not over tighten the screw.

Battery Type: "1.5V 2 x AA"

To prevent corrosion, remove the batteries if the fan will not be used over a lengthy period.

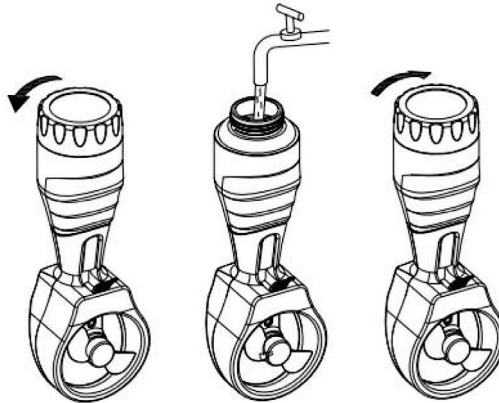
### 3.2 Fill with Water

To fill with water, turn the fan upside down.

Unscrew the filler cap anticlockwise.

Fill with clean cold water to just below the opening, then refit the filler cap and tighten securely.

**Do Not** fill with any other liquid other than fresh clean cold water.



### 3.3 Water Spray Trigger

To create the water mist, grasp the bottle of the fan and place your index finger on the trigger.

Squeeze (pump) the trigger continuously until a fine mist of spray is produced.

### 3.4 On / Off

To switch the fan on, press the On / Off button located on the back of the fan head.

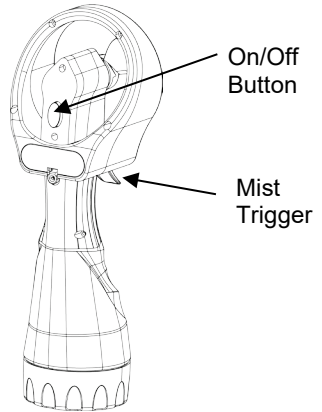
To switch Off, Press the On / Off Button again.

### 3.5 To Mist spray

With the batteries installed the correct way, the water bottle filled with fresh clean cold water, press the On / Off button to start the fan.

Hold the fan at arm's length away from your face, then point towards yourself and press the mist trigger.

A fine mist of cold water will then be blown onto your face creating a cool refreshing feeling.



## 4 Care and Cleaning

**NOTE:** Cleaning and user maintenance shall not be made by children without supervision

- Ensure that the fan is switched off.
- Clean the body with a clean, damp cloth and wipe dry.
- Never spray with liquids or submerge the Fan in water or any other liquid.
- Do not use flammable liquids, chemicals, abrasive creams, steel wool or scouring pads for cleaning.

## 5 Storage

- Switch off and remove the batteries if not using for an extended period of time.
- Store your fan in a cool, dry location

## 6 Warranty Against Defect

### 12 Month Warranty

Thank you for your purchase from Kmart.

Kmart Australia Ltd warrants your new product to be free from defects in materials and workmanship for the period stated above, from the date of purchase, provided that the product is used in accordance with accompanying recommendations or instructions where provided. This warranty is in addition to your rights under the Australian Consumer Law.

Kmart will provide you with your choice of a refund, repair or exchange (where possible) for this product if it becomes defective within the warranty period. Kmart will bear the reasonable expense of claiming the warranty. This warranty will no longer apply where the defect is a result of alteration, accident, misuse, abuse or neglect.

Please retain your receipt as proof of purchase and contact our Customer Service Centre 1800 124 125 (Australia) or 0800 945 995 (New Zealand) or alternatively, via Customer Help at [Kmart.com.au](http://Kmart.com.au) for any difficulties with your product. Warranty claims and claims for expense incurred in returning this product can be addressed to our Customer Service Centre at 690 Springvale Rd, Mulgrave Vic 3170.

Our goods come with guarantees that cannot be excluded under the Australian Consumer Law. You are entitled to a replacement or refund for a major failure and compensation for any other reasonably foreseeable loss or damage. You are also entitled to have the goods repaired or replaced if the goods fail to be of acceptable quality and the failure does not amount to a major failure.

For New Zealand customers, this warranty is in addition to statutory rights observed under New Zealand legislation.

### **IMPORTANT!**

**For all technical queries or difficulties in operating the product and for spare parts, contact H.E. Group customer service 1300 105 888 (Australia) and 09 8870 447 (New Zealand).**