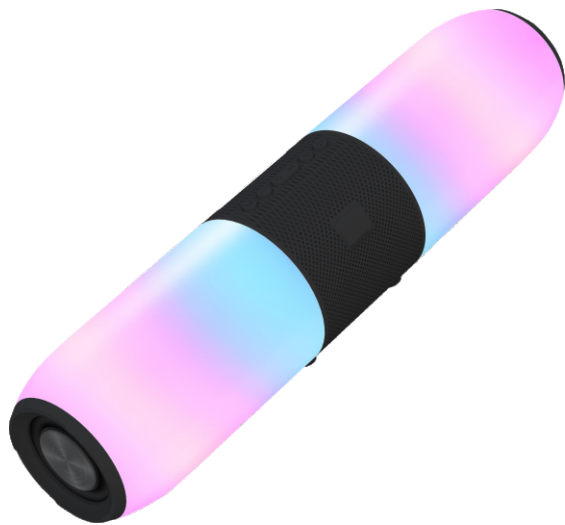


anko

Bluetooth® Light up Party Speaker 43190454



Please read all instructions carefully and keep for future use.

Important Precautions:

1. The apparatus shall not be exposed to dripping or splashing and that no objects filled with liquids, such as vases, shall be placed on the apparatus.
2. Minimum distances 100 cm around the apparatus for sufficient ventilation.
3. The ventilation should not be impeded by covering the ventilation opening with items, such as news papers, table-cloths or curtains.
4. No naked flame sources such as lighted candles, should be placed on the apparatus.
5. When the mains plug or and appliance coupler is used as the disconnect device, the disconnect device shall remain readily operable.
6. Working temperature: -10 C ~ +45 C.
7. The use of apparatus in moderate climates.
8. Do not use this apparatus near the water.

Avoids to use battery in following conditions:

1. Attention should be drawn to the environmental aspects of battery disposal.
2. Battery cannot be subjected to high or low extreme temperatures, low air pressure at high altitude during use, storage or transportation.
3. Replacement of a battery with an incorrect type that can result in an explosion or the leakage of flammable liquid or gas.
4. Disposal of a battery into fire or a hot oven, or mechanically crushing or cutting of a battery, that can result in an explosion.
5. Leaving a battery in an extremely high temperature surrounding environment that can result in an explosion or the leakage of flammable liquid or gas.
6. A battery subjected to extremely low air pressure that may result in an explosion or the leakage of flammable liquid or gas.
7. Batteries shall not be exposed to excessive heat such as sunshine, fire or the like.
8. The internal battery is non-user replaceable.

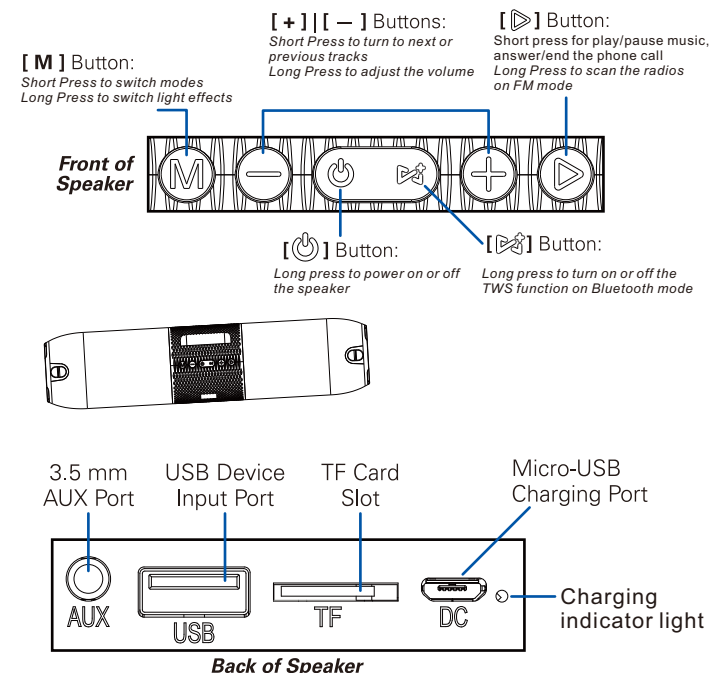
Product Specification

Charging input rating: 5V 1A
Charging time: 3 Hours
Playback time at 50% volume: 2 Hours
Power: 5W
Speaker: 2.5 Inch
FM Radio: 87.5-108MHz
AUX In: 3.5mm

Product Feature:

- Multi color lights for choosing.
- Bluetooth version 5.0, compatible with all audio devices with Bluetooth function, as MP3/4, mobile, computer, iPad.
- Built-in rechargeable lithium battery

Function Introduction



Charging the Speaker

The speaker comes with a built-in rechargeable, follow the below steps to charge it:

1. Plug the end of USB charging cable (included) with USB charger (not included) to the DC 5V input slot, another end plug into a wall outlet to start charge.
2. The battery indicator will show RED on the back and turn off when fully charged.
3. When the speaker battery is lower power, a tone will be heard indicating that need to charge.

Powering ON/OFF

1. Make sure that the speaker has been charged.
2. Long press [Power] button to power on the speaker.
3. The speaker will enter Bluetooth pairing mode, and will automatically re-pair to any nearby, previously paired device.
4. Long press [Power] button to power off the speaker.

Switching the Speaker Light Effects

1. The light effects will automatically turn on when the speaker is powered on.
2. Long press the [M] button on the top of the speaker to switch the light effects and turn the light effects off.

Adjusting Volume & Playback

1. Long press [+ / -] button on the speaker to adjust the volume.
2. Short press [+ / -] button on the speaker to next or previous track.
3. Press the [Play/Pause] button to pause and resume playback.

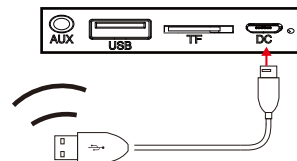
Playing the USB or TF Card

1. Insert a USB or TF card into the corresponding slot on the speaker.
2. Press the [+ / -] and [Play/Pause] buttons on the speaker to control the tracks of USB or TF card.

Using the FM Radio

Notes: The USB charging cable is the same as FM antenna cable, please make sure the USB charging cable plug into the DC input port to ensure has good signal during the scanning.

1. Power on the speaker and switch to FM mode. A voice will be heard from the speaker.
2. Long press the [Play/Pause] button to start scanning and saving available stations, will turn to first saved station after finished the scanning.
3. Press the [+ / -] buttons to the switch to the next or previous of the saved stations.



Connecting to an AUX Device

1. Insert one connector of 3.5mm auxiliary cable (included) into the 3.5mm Aux input jack on the back of the speaker. Insert the other connector into the headphone jack or audio output jack of your media playing device.
2. In AUX mode, all playback will be controlled by your connected device.

Connecting with Bluetooth

1. Power on the speaker and switch to Bluetooth mode. A voice will be heard from the speaker.
2. Open the Bluetooth on your mobile device and search Bluetooth name 43190454 to pair.
3. In Bluetooth mode, playback and volume can be controlled by your paired device or the controls on the top of the speaker.

TWS Connecting

*This speaker supports TWS pairing function, please buy two same speaker to enjoy this function.

1. Long press the [FM] button on two speakers to turn on the TWS function, there are a tone from both speaker separately.
2. The TWS will pair automatically once both speakers turn on the TWS function and there is a same tone from both speaker once paired successfully.
3. Long press the volume knob on the top of any speaker increase or decrease the music volume.
4. If not using the TWS function, please long press [FM] to disconnected TWS.

Phone Calling

When the speaker connected with Bluetooth, you can take phone calls using the buttons on the speaker and talk through the built-in microphone.

1. Press the [Play/Pause] button to answer an incoming call.
2. Press the [Play/Pause] button again to end the call.

12 Month Warranty

Thank you for your purchase from Kmart.

Kmart Australia Ltd warrants your new product to be free from defects in materials and workmanship for the period stated above, from the date of purchase, provided that the product is used in accordance with accompanying recommendations or instructions where provided. This warranty is in addition to your rights under the Australian Consumer Law.

Kmart will provide you with your choice of a refund, repair or exchange (where possible) for this product if it becomes defective within the warranty period. Kmart will bear the reasonable expense of claiming the warranty. This warranty will no longer apply where the defect is a result of alteration, accident, misuse, abuse or neglect.

Please retain your receipt as proof of purchase and contact our Customer Service Centre on 1800 124 125 (Australia) or 0800 945 995 (New Zealand) or alternatively, via Customer Help at Kmart.com.au for any difficulties with your product. Warranty claims and claims for expense incurred in returning this product can be addressed to our Customer Service Centre at 690 Springvale Rd, Mulgrave Vic 3170.

Our goods come with guarantees that cannot be excluded under the Australian Consumer Law. You are entitled to a replacement or refund for a major failure and compensation for any other reasonably foreseeable loss or damage. You are also entitled to have the goods repaired or replaced if the goods fail to be of acceptable quality and the failure does not amount to a major failure.

For New Zealand customers, this warranty is in addition to statutory rights observed under New Zealand legislation.