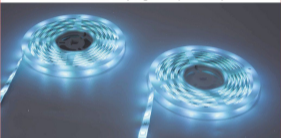


anko

User Manual
Smart LED Strip Light 10M(5Mx2PCS)



43033010

GOOGLE IS A TRADEMARK OF GOOGLE LLC.
AMAZON, ALEXA AND ALL RELATED LOGOS ARE TRADEMARKS
OF AMAZON.COM, INC. OR ITS AFFILIATES

Please take a minute to read the below information on setting up this device. The smart strip light can work with both Amazon Alexa and Google Assistant. After the smart strip light has been installed it will need to be paired with an APP.

"Tuya Smart" downloadable from Google Play or the Apple store. Once the Tuya Smart APP is installed it will then need to be linked with either Amazon Alexa or Google Assistant account to activate the voice control function. This user manual consists of three parts. Part one is fundamental set-up, part two and three are alternative device set-ups. If you use Amazon Alexa for voice control, please follow instructions on part one and two. If you use Google Assistant for voice control, please skip part two, follow the instructions on part one and three.

Part One: Pairing the smart strip light to "Tuya Smart" App
Part Two: Controlling the smart strip light with Amazon Alexa
Part Three: Controlling smart strip light with Google Assistant



Specification
Input: 220V-240V, 50/60HZ
(AC adapter XYJ6LE-120300VH-AW)
Output: d.c. 12V 3A
Dimension: 5M x 3pcs

INSTALLATION



1. Unroll the strip light before use.
2. Connect to the APP properly before installation.
3. For standard use only. Do not connect with others strip lights.
4. Lamination not suitable for covering with thermally insulating material.
5. Do not block the controller with metal objects.
6. There's a built-in microphone inside the controller, please place your music playing device near the controller for better results.
7. The light source of this luminaire is not replaceable when the light source reaches its end-of-life the whole luminaire shall be replaced.
8. When breakage or damage to lamps occurs, the chain must not be used/imagined but disposed of safely.
9. For indoor use only.
10. Before adhering strip lights, clean the surface of the area you will be placing the lights on. It is recommended to apply your strip lights on smooth stable surfaces. It should not be placed on rough, textured or painted wall surfaces or any surfaces that can bend or move.

Product Instructions

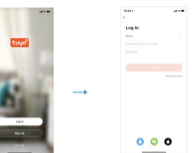


1. Cleaning the installation surface.
2. Sticking to the installation surface.

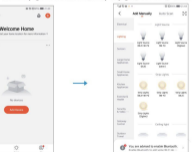
3. Plugging into the socket.
4. One press the button to power ON/OFF the lights with the lights powered on. Press and hold the button for about 5 seconds to enter the configuration mode.

Part One
How to pair the smart strip light to Tuya Smart App?

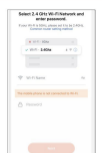
Install the Tuya Smart to control the smart strip light.
Please download and install the app by:
1. Scanning below QR code OR search "Tuya Smart" in App Store or Google Play. Create an account on Tuya Smart and login.
Note: You will need to enter these account details for Alexa or Google Assistant App pairing later.

2. Add the smart strip light to Tuya Smart App
3. The smart Wi-Fi devices only supports 2.4GHz Only. Make sure your mobile device connected to your home 2.4GHz Wi-Fi network. Please refer to your Wi-Fi router setup guide.
4. Tap "+" button on top right corner to add device, then tap "strip lights (RULE+Wi-Fi)" to enter.



5. Enter your Wi-Fi SSID name and Wi-Fi password in then tap "Next".
6. Enable your mobile device Bluetooth connection for easy setup mode.



7. Press and hold the middle button of the controller for 6 seconds, the strip light will fast flash in red color, this will then enter Quick Connection Mode. Please make sure the smart strip light is standby. (The strip light in red color and flash in 2 times per seconds).

Manual Control by 3 Buttons

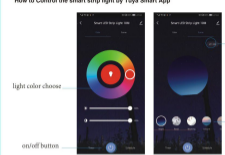


8. Tap "next" button and wait till it is successfully connected. Give a name to the device.

A simple name is recommended for easier voice recognition with Alexa or Google Assistant. The name given to the device will be the same for voice control on Alexa or Google Assistant. For example, the device is named "Smart LED Strip Light 10M" on this user manual. The named device will be shown on the app homepage. Now you can control the smart strip light with Tuya smart on the setting page.



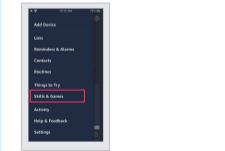
How to Control the smart strip light by Tuya Smart App



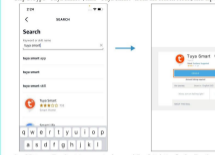
light color choose
on/off button
DIY scene
Scene mode

Part Two- How to control the smart strip light with Amazon Alexa.

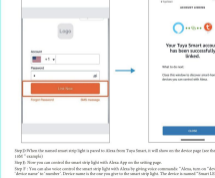
Please make sure that your Alexa app is connected to Echo, and both work well under your Wi-Fi network.
Step A: Log in your Alexa App, tap top left corner, and tap "Skills and Games"



Step B: Type "Tuya Smart", find "Tuya Smart" from the search result, and tap it to Enable the skill.



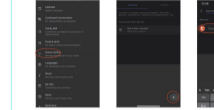
Step C: Enter your Tuya Smart App account and password. Tap "Link New", then Tuya Smart will linked successfully.



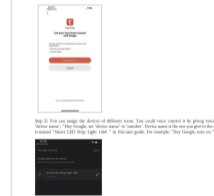
Step D: When the named smart strip light is paired to Alexa from Tuya Smart, it will show on the Device page (see the "Smart LED Strip Light 10M" example).
Step E: Now you can control the smart strip light with Alexa App on the setting page.
Step F: You can also voice control the smart strip light with Alexa by giving voice commands: "Alexa, turn on 'device name'", "Alexa, set 'device name' to 'number'", "Device name is the one you give to the smart strip light. The device is named "Smart LED Strip Light 10M" in this user guide. For example, "Alexa, turn on 'Smart LED Strip Light 10M'".
Step G: You can also voice control the smart strip light with Alexa by giving voice commands: "Alexa, turn on 'Smart LED Strip Light 10M'".

Part Three-How to control the smart strip light with Google Assistant.

Step A: Login Google Assistant App, tap "Home Control" on the right side bar page.
Step B: Tap "+" button on the bottom right to enter next page.
Step C: Find "Tuya Smart" from side bar list.



Step D: Enter your "Tuya Smart" App account and password to bind Tuya Smart account to Google Assistant.



Step E: You can also voice control the smart strip light with Google Assistant by giving voice commands: "Hey Google, turn on 'device name'", "Hey Google, set 'device name' to 'number'". Device name is the one you give to the smart strip light. The smart strip light is named "Smart LED Strip Light 10M" in this user guide. For example, "Hey Google, turn on 'Smart LED Strip Light 10M'".

Remote control function

The dynamic mode is correspond with the scene light in APP. total seven kinds of light modes



Please note: speed+, speed-, will be used when the light is on the dynamic mode and the light is in color change function.



THIS PRODUCT CONTAINS
BUTTON CELL BATTERIES
SCAN THE QR CODE FOR
MORE INFORMATION

WARNING: Button cell Batteries are Hazardous (toxic or acid). Keep away from Children. Button Cell Batteries can cause severe or fatal injuries if 2 hours or less if they are swallowed or placed inside any part of the body. If you suspect your child has swallowed or inserted a button cell battery, call the 24-hour poisons information center in Australia on 131126 or in New Zealand 0800 354 700 or contact your country's emergency Dept. Used batteries must be disposed of in the garbage or a battery recycle facility.

CAUTION: Do not touch battery...Chemical burns hazard.
The remote control supplied with this product contains a combination cell battery. If the combination cell battery is swallowed, it can cause severe internal burns in just 2 hours and can lead to death.
Keep away and use/batteries away from children.
If the battery compartment does not close securely, stop using the product and keep it away from children.
If you think batteries might have been swallowed or placed inside any part of the body, seek immediate medical attention.

12 Month Warranty

Thank you for your purchase from Enart.
Enart Australia LED warrants your new product to be free from defects in materials and workmanship for the period stated above, from the date of purchase, provided that the product is used in accordance with accompanying recommendations or instructions where provided. This warranty is in addition to your rights under the Australian Consumer Law.
Enart will provide you with your choice of a refund, repair or exchange (where possible) for this product if it becomes defective within the warranty period. Enart will bear the reasonable expense of clearing for warranty. This warranty will no longer apply where the defect is a result of alteration, accident, misuse, abuse or neglect.
Please retain your receipt as proof of purchase and contact our Customer Service Centre on 0800 134 123 (Australia) or 0800 900 900 (New Zealand) or alternatively, via Customer Help at Enart.com.au for any difficulties with your product. Warranty claims and dates for repairs incurred in returning the product can be addressed to our Customer Service Centre at 600 Springside Rd, Melbourne VIC 3028.

Our goods come with guarantees that cannot be excluded under the Australian Consumer Law. You are entitled to a replacement or refund for a major failure and compensation for any other reasonably foreseeable loss or damage. You are also entitled to have the goods repaired or replaced if the goods fail to be of acceptable quality and the failure does not amount to a major failure.
For New Zealand customers, this warranty is in addition to statutory rights observed under New Zealand legislation.