

anko

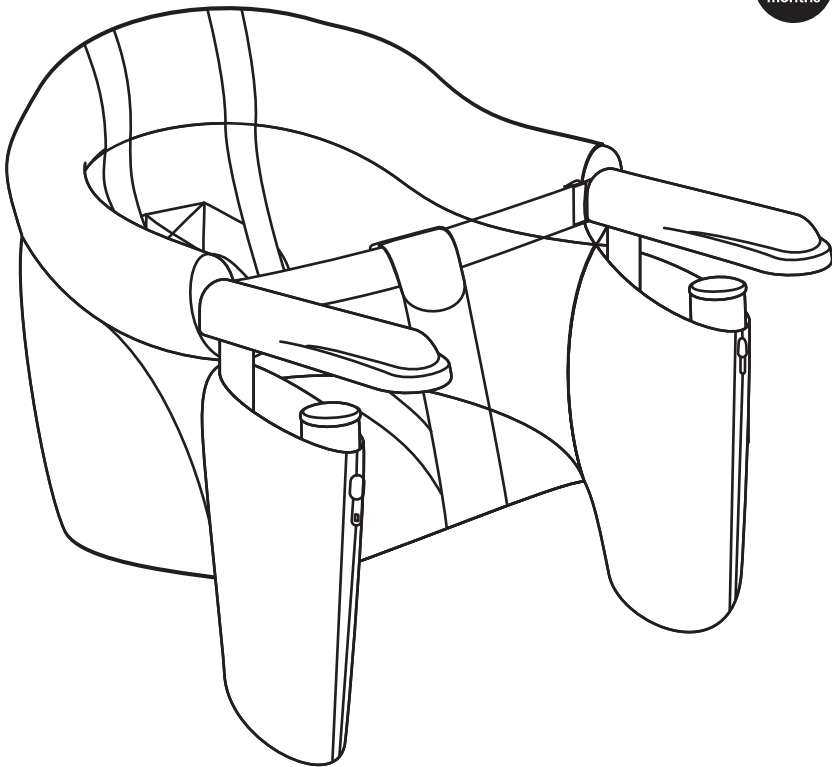
ATTACHABLE HIGHCHAIR

INSTRUCTION MANUAL

6+
months

15
kg

MAXIMUM
WEIGHT
OF CHILD

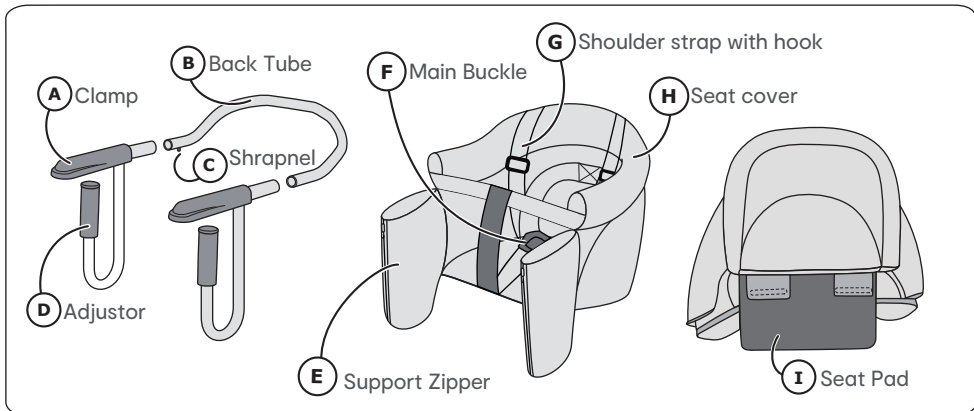


The photos and illustrations shown in this instruction manual are generic.

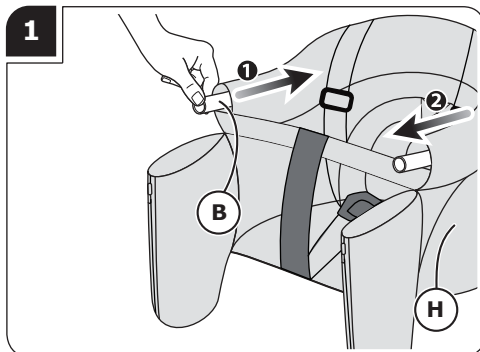
The manufacturer reserves the right to change any specification or feature without prior notice.

IMPORTANT: READ CAREFULLY AND KEEP FOR FUTURE REFERENCE.

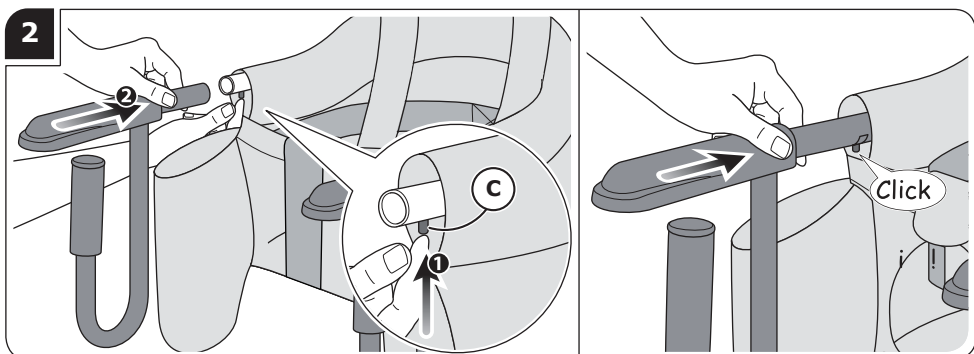
Part List:



Assembly:

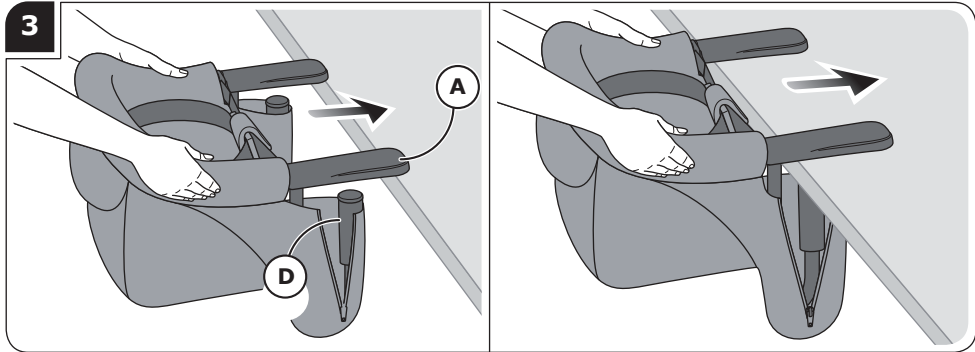


Insert back tube (B) into the sleeve of seat cover (H).

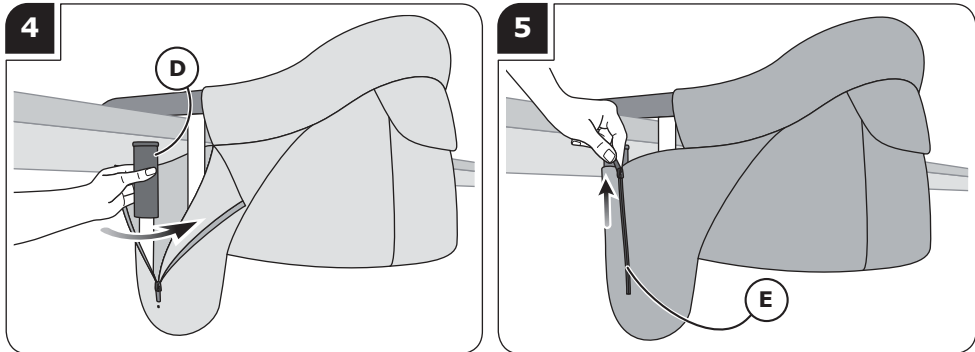


Press Shrapnel (C) and simultaneously put the clamp assembly into the Back Tube (B) until there is a "Click" sound. Make sure the side slot of the clamp tube is faced outwards during assembly. Repeat for both sides.

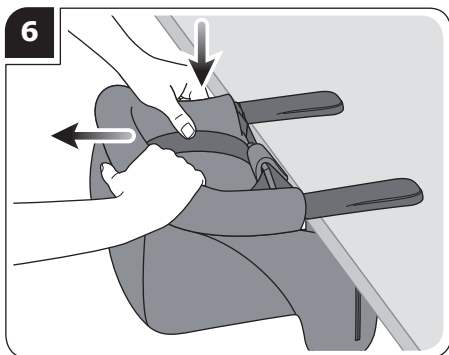
Attached to Table:



Mount the chair to the table.



Screw Adjustor (D) upwards to secure to the table surface tightly, then zip up the part (E). Repeat for both sides.



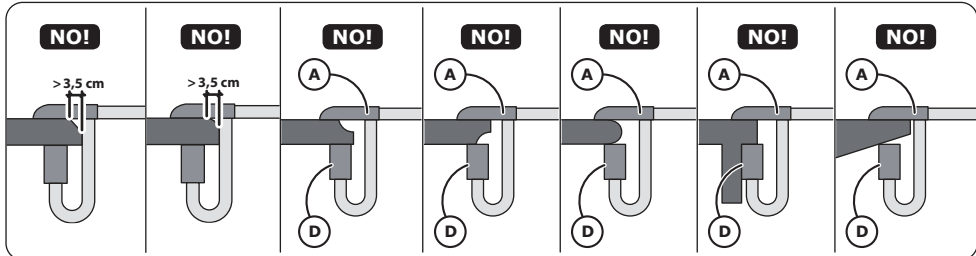
Check the chair to ensure it is attached to the table tightly as per image.

WARNING:

This product is not suitable for use with all tables. Do not use with glass-topped tables, tables with loose table tops, table leaves, single pedestal tables, card tables, camping tables or any other table that does not offer sufficiently stable support.

MAXIMUM THICKNESS OF THE TABLE: 90 mm.

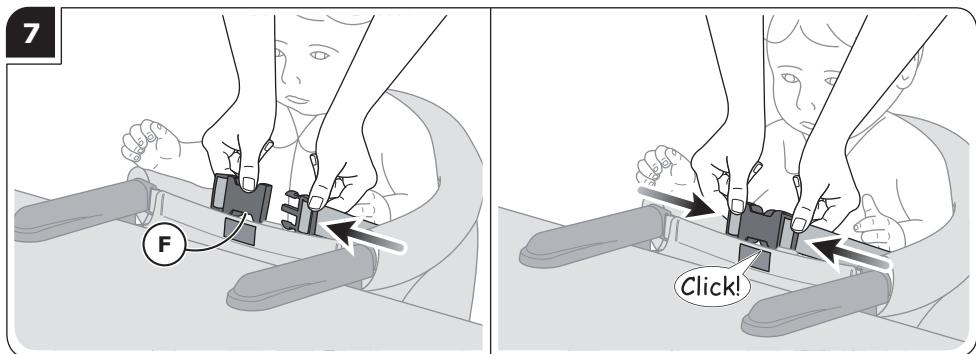
MINIMUM THICKNESS OF THE TABLE: 20 mm.



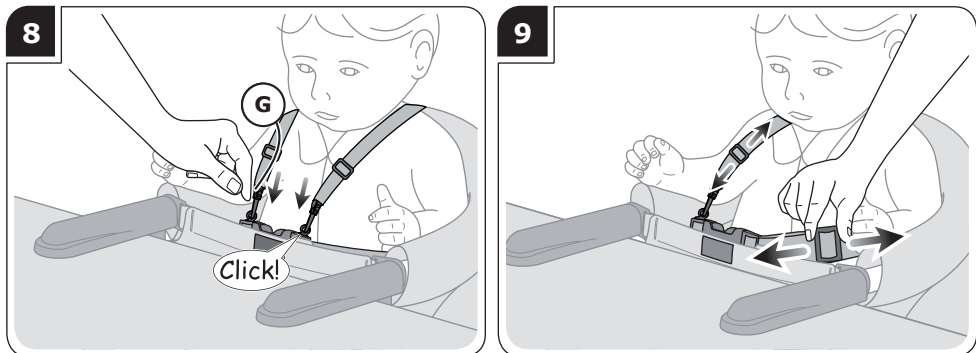
Do not use if the table is not suitable as per above images.

Harness system:

WARNING! The child should be harnessed securely and supervised at all times.



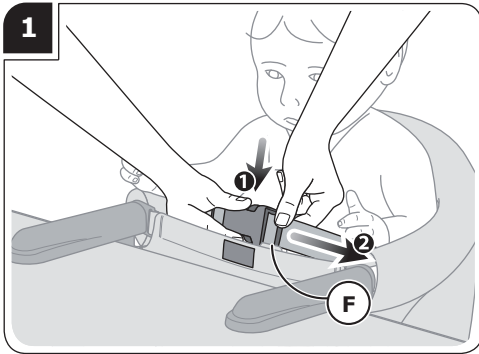
Insert the side clips into the main buckle (F).
You will hear a "Click" sound when the buckle is in position.



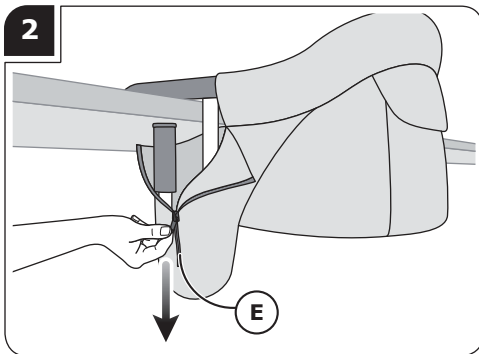
Attach the shoulder belt hooks to the main buckle.

Adjust the length of the harness to fit your child.

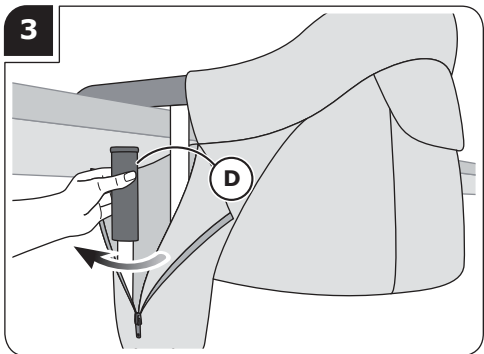
Remove from table and fold:



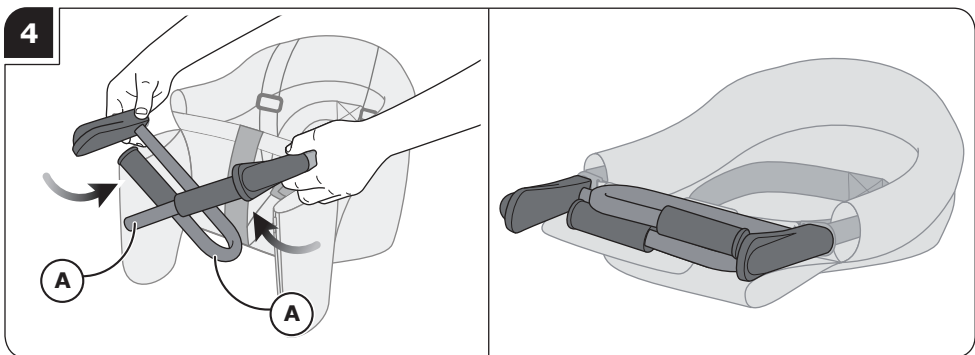
Unfasten the safety buckle and remove your child from the highchair.



Unzip the support (E).

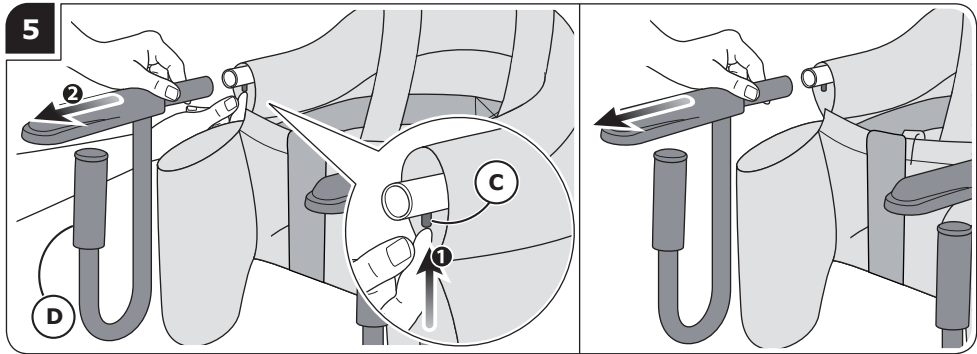


Unscrew the Adjustor (D) to loosen the clamp.

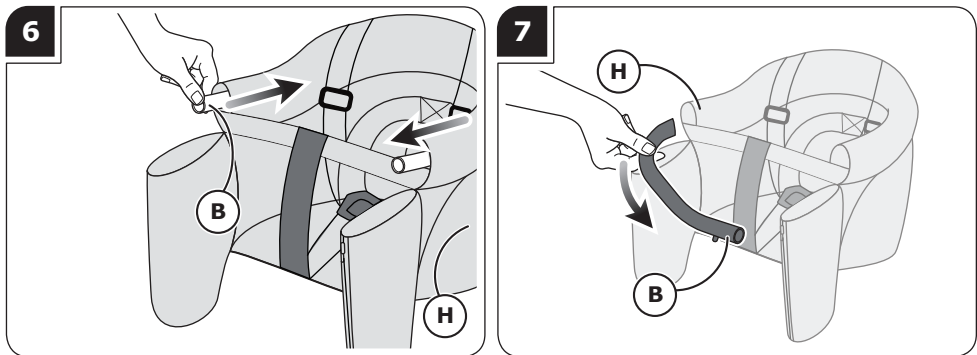


Turn the clamp assembly inwards to fold the chair flat.

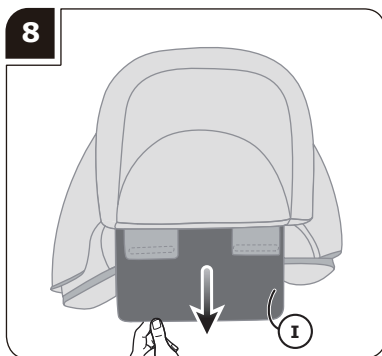
Disassemble the product:



Release the Shrapnel (C) and simultaneously pull out the clamp (A) from the tube.
Repeat for both sides.



Remove the Back Tube (B) from the Seat Cover (H).



Unfasten the fastening grips underneath and take out the Seat Pad (I) from the Seat Cover (H) as per image.

General instructions

Complies with safety requirements EN 1272: 2017. Products have been carefully researched and manufactured for your baby's safety and comfort.

MAXIMUM PERMITTED WEIGHT IN THE POCKET : 500 Grams

WARNING

- Never leave the child unattended.
 - Always use the child restraint and table attachment systems.
 - Always check the security and the stability of the product before use.
 - Maximum weight: 15 kg.
-
- The product is intended for children able to sit up unaided.
 - Do not use tablecloths or other objects on the table that might interfere with the proper functioning of the anchoring elements. Keep the table structure and surface clean and dry.
 - Routinely check any clamping devices and retighten them, if required.
 - Do not use the product if any components are broken or missing.
 - Do not use accessories or replacement parts other than those approved by the manufacturer or distributor.
 - Do not attach the product where the child might use his feet to push against a part of the table, another chair or any other structure as this could cause the product to come off the table.
 - This product is not suitable for use with all tables. Do not use with glass-topped tables, tables with loose table tops, table leaves, single pedestal tables, card tables, camping tables or any other table that does not offer sufficiently stable support.
 - Check that the table will not tip over when the product, attached to it, is in use.
 - Keep coverings away from children to avoid suffocation.

Maintenance:

To facilitate reassembly, be sure to make a note of how the different parts fit together before dismantling the product.

WARM HAND WASH.

DO NOT BLEACH.

DO NOT TUMBLE DRY.

DO NOT IRON.

DO NOT DRYCLEAN☒.

DRY THOROUGHLY BEFORE USE OR STORAGE.

CLEAN METAL AND PLASTIC COMPONENTS WITH MILD DETERGENT AND WARM WATER. NEVER USE ABRASIVE PADS, AMMONIA BASED, BLEACH BASED OR SPIRIT TYPE CLEANERS.

KEYCODE: 43232925

**KMART CUSTOMER SERVICE
AU: 1800 124 125 NZ: 0800 945 995**

MADE IN CHINA

© KMART AUSTRALIA LIMITED

FOR AU / NZ: IMPORTED FOR KMART STORES IN AUSTRALIA AND NEW ZEALAND.

KMART AUSTRALIA - 690 SPRINGVALE ROAD, MULGRAVE, VIC 3170 AUSTRALIA.

KMART NEW ZEALAND - REGIONAL OFFICE C/O KMART PAPATOETOE STORE,
HUNTERS PLAZA, GREAT SOUTH ROAD, PAPATOETOE, AUCKLAND, NEW ZEALAND.