

# USER MANUAL

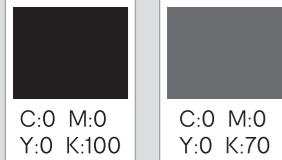
43233519

Bluetooth Bluetooth Over-Ear Noise Cancelling Headphone\_IM\_V

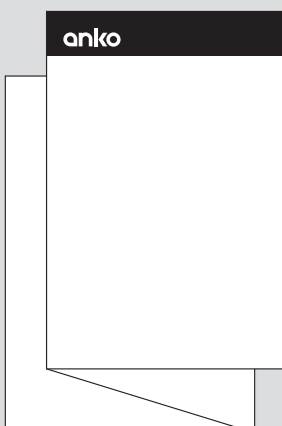
Artwork Proof Date: 30.8.2022

**PAPER:**  
80gsm Bright white uncoated paper  
80gsm 书写纸

**PRINT COLOURS:**



**PRINT FINISH:**  
Double sided



105 mm

anko

# Bluetooth® Over-Ear Noise Cancelling Headphone

## User Manual

- What's Included:**
- ▶ Bluetooth headphone x 1
  - ▶ USB-C charging cable x 1
  - ▶ 3.5mm audio cable x 1
  - ▶ User manual x 1



148.5 mm

43-233-519

### Battery Charging

- ▶ Please use the provided USB cable to charge the battery.
- ▶ Insert the USB-C cable end into the headphone charging port.
- ▶ Insert USB charging cable into an appropriate 5V 1A USB port.
- ▶ The LED will turn red when charging and turn blue when the headphone is fully charged.
- ▶ Turn off the headphone before charging.
- ▶ Do not charge the headphone during use.

### Specification

- ▶ **Bluetooth Version:** 5.3
- ▶ **Support Profiles:** A2DP1.3/HFP1.6/HSP1.2/AVRCP1.6
- ▶ **Working Distance:** 10m
- ▶ **Speaker:** 40mm
- ▶ **Music Time (ANC OFF):** up to 70 hours
- ▶ **Music Time (ANC ON):** up to 50 hours
- ▶ **Charging Voltage:** DC 5V
- ▶ **Charging Time:** approx 2.5 hours
- ▶ **Pairing Window Time:** 5 mins

### 12 month warranty

Thank you for your purchase from Kmart. Kmart Australia Ltd warrants your new product to be free from defects in materials and workmanship for the period stated above, from the date of purchase, provided that the product is used in accordance with the accompanying recommendations or instructions where provided. This warranty is in addition to your rights under the Australian Consumer Law. Kmart will provide you with your choice of a refund, repair or exchange (where possible) for this product if it becomes defective within the warranty period. Kmart will bear the reasonable expense of claiming the warranty. This warranty will no longer apply where the defect is a result of alteration, accident, misuse, abuse or neglect. Please retain your receipt as proof of purchase and contact our Customer Service Centre on **1800 124 125 (Australia)** or **0800 945 995 (New Zealand)** or alternatively, via Customer Help at **kmart.com.au** for any difficulties with your product. Warranty claims and claims for expense incurred in returning this product can be addressed to our Customer Service Centre at 690 Springvale Rd, Mulgrave Vic 3170. Our goods come with guarantees that cannot be excluded under the Australian Consumer Law. You are entitled to a replacement or refund for a major failure and compensation for any other reasonably foreseeable loss or damage. You are also entitled to have the goods repaired or replaced if the goods fail to be of acceptable quality and the failure does not amount to a major failure. For New Zealand customers, this warranty is in addition to statutory rights observed under New Zealand legislation.

**WARNING** ▶ Do not dispose of unit in fire or water. ▶ Never attempt to disassemble and reassemble. Waste electrical products should not be disposed of with household waste, please recycle where facilities exist. Check with your local authority for recycle advice. ▶ Keep your device and all accessories out of reach of children and animals. Small parts may cause choking or serious injury if swallowed. ▶ Avoid exposing your device to very cold or very hot temperatures (below 0°C or above 40°C). ▶ Extreme temperatures can cause deforming of the device and reduce the charging capacity and life of your device. ▶ Do not allow your device to get wet, liquids can cause serious damage. Do not handle your device with wet hands.

The Bluetooth® word mark and logos are registered trademarks owned by Bluetooth® SIG, Inc., and any use of such marks by KMART AUSTRALIA is under licence. iPhone, iPad and Mac is a trademark of Apple Inc., registered in the U.S. and other countries.



### Warning

- ▶ This product shall not be connected to power supply source exceeding PS1 (5V d.c. 1A).
- ▶ Battery cannot be subjected to high or low extreme temperatures, low air pressure at high altitude during use, storage or transportation.
- ▶ Replacement of a battery with an incorrect type can result in an explosion or the leakage of flammable liquid or gas.
- ▶ Disposal of a battery into fire or a hot oven, or mechanically crushing or cutting of a battery can result in an explosion.
- ▶ Leaving a battery in an extremely high temperature surrounding environment can result in an explosion or the leakage of flammable liquid or gas.
- ▶ A battery subjected to extremely low air pressure may result in an explosion or the leakage of flammable liquid or gas.

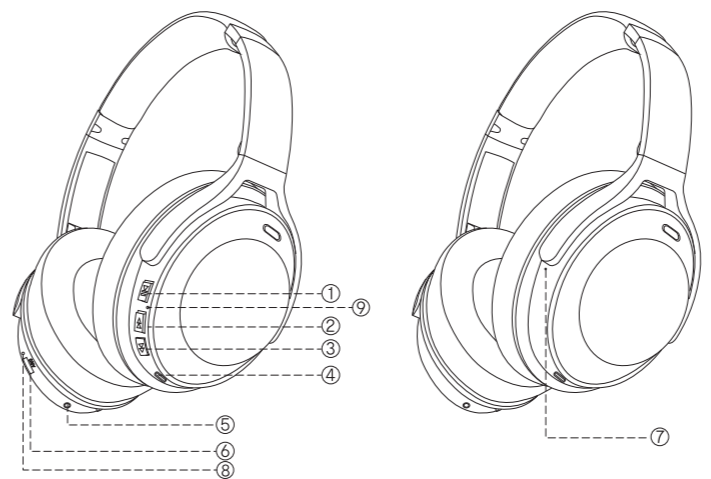


**WARNING: HIGH VOLUME CAN CAUSE HEARING LOSS. YOUR EARS ARE IMPORTANT. LISTENING AT HIGH VOLUME FOR A PROLONGED PERIOD MAY DAMAGE YOUR HEARING. DO NOT LISTEN TO HEADPHONES AT HIGH VOLUME.**

### CAUTION:

- ▶ The batteries in this product are not replaceable.
- ▶ Do not expose the device to direct sunlight, heat or flame.
- ▶ Only use dry cloth to keep product clean from dust.
- ▶ Never try to repair this product by yourself, take it to a certified technician.
- ▶ Trying to remove panels or repairing the unit yourself could lead to electric shock.
- ▶ When the unit is not in use, make sure it is correctly turned off and stored in a dry place.

### Instructions



- ① Power ON/OFF/Play/Pause/Answer/Hang up/Reject/Redial Call  
Activate Phone Assistant
- ② Volume Up/Next Track
- ③ Volume Down/Previous Track
- ④ USB-C Charging Port
- ⑤ AUX IN
- ⑥ ANC ON/OFF
- ⑦ Microphone
- ⑧ ANC Indicator
- ⑨ Power Indicator

### How to Use the Headphone

- Power ON:** Press and hold the power ▶|| button for approx. 5 seconds until blue LED is on
- Power OFF:** Press and hold the power ▶|| button for approx. 5 seconds until the LED starts to flash, then turns off.
- Play:** Press ▶|| button
- Pause:** Press ▶|| button
- Answer Call:** Press ▶|| button
- End Call:** Press ▶|| button
- Re-dial Last Call:** Press ▶|| button twice
- Reject Call:** Press and hold ▶|| button for 2 seconds
- Activate Phone Assistant:** Press ▶|| button 3 times
- Volume Up:** Press ◀◀ button
- Volume Down:** Press ▶▶ button
- Next Track:** Press and hold ◀◀ button
- Previous Track:** Press and hold ▶▶ button
- ANC Function ON:** Press and hold ON/OFF button to turn on ANC, the ANC indicator will be green.
- ANC Function OFF:** Press and hold ON/OFF button to turn off ANC, the ANC indicator will turn off.
- Note:** ANC ON mode is good for listening to music and taking calls. ANC OFF mode is good for situations where you want to hear speech, traffic noise or other ambient sounds.

### Pairing the Headphone with Bluetooth Devices

- ▶ Once the headphone is powered on, the LED light will flash blue and red, the headphone will connect to the last paired device.
- ▶ If not previously paired, search on your electronic devices Bluetooth menu and select the pairing name KM43233519
- ▶ Pair window: 5 mins
- ▶ Once connected, the LED light will turn off.

### AUX Mode

Insert the Aux Cable into the headphone, and the 3.5mm Jack end into your mobile device or computer. The Bluetooth and ANC mode will turn off automatically and switch to AUX mode.