

2022年11月28日

说明书: 四色双面印刷  
材质: 157克铜板纸  
成品尺寸: 115x160mm

正面

115mm

### Product Specifications:

Press the number of keys: 104keys  
Input: 5V/280mA  
Product size: 44.5\*13.1\*2.6cm  
Keycap type: Punk circular suspension  
Support Windows:2000/XP/win7/win10 or later

### 12 Month Warranty

Thank you for your purchase from Kmart.  
Kmart Australia Ltd warrants your new product to be free from defects in materials and workmanship for the period stated above, from the date of purchase, provided that the product is used in accordance with accompanying recommendations or instructions where provided. This warranty is in addition to your rights under the Australian Consumer Law.  
Kmart will provide you with your choice of a refund, repair or exchange (where possible) for this product if it becomes defective within the warranty period. Kmart will bear the reasonable expense of claiming the warranty. This warranty will no longer apply where the defect is a result of alteration, accident, misuse, abuse or neglect.  
Please retain your receipt as proof of purchase and contact our Customer Service Centre on 1800 124 125 (Australia) or 0800 945 995 (New Zealand) or alternatively, via Customer Help at Kmart.com.au for any difficulties with your product. Warranty claims and claims for expense incurred in returning this product can be addressed to our Customer Service Centre at 690 Springvale Rd, Mulgrave Vic 3170.  
Our goods come with guarantees that cannot be excluded under the Australian Consumer Law. You are entitled to a replacement or refund for a major failure and compensation for any other reasonably foreseeable loss or damage. You are also entitled to have the goods repaired or replaced if the goods fail to be of acceptable quality and the failure does not amount to a major failure.  
For New Zealand customers, this warranty is in addition to statutory rights observed under New Zealand legislation.

anko

Instruction manual  
Keycode: 43244034  
RGB Wired Gaming Keyboard



160mm

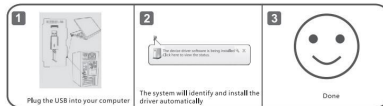
背面

### Safety Instructions:

Please read the instruction manual before using this device and follow all the safety instruction to avoid damage caused by improper use.

- Keep the instruction manual for future reference. Should this device be given to a third party, then this instruction manual must also be handed over.
- Use this device solely for its intended purpose.
- For indoor use only.
- Keep the appliance away from all hot surfaces and naked flames.
- Always put the appliance on a level, stable, clean, dry surface. Protect the appliance from extreme heat and cold, dust, direct sunlight, humidity and drops or jets of water.
- Do not immerse the appliance in water or in other liquids.
- Do not open the housing under any circumstances. Do not introduce any objects into the interior of the housing.

### How To Use:



### LED Adjustment:

- ⊖ FN + ⊕ = Breathing mode1: three lights modes breathing in loop
- ⊖ FN + ⊕ = Constant light: three light modes
- ⊖ FN + ⊕ = Breathing mode 2:one kind of light mode breathing in loop, total three light modes can choose.

### When in constant light mode:

- ⊖ FN + ⊕ = Lights up
- ⊖ FN + ⊖ = Light dimming

### When in breathing light mode:

- ⊖ FN + ⊕ = Increase the speed of light breathing
- ⊖ FN + ⊖ = Decrease the speed of light breathing

### Keyboard lock function:

- ⊖ FN + ⊕ = Lock and unlock

### Multimedia Hotkeys Function:

- ⊖ FN + F1 = Music player
- ⊖ FN + F2 = Previous
- ⊖ FN + F3 = Open Homepage
- ⊖ FN + F4 = Volume-
- ⊖ FN + F5 = Next
- ⊖ FN + F6 = Mailbox
- ⊖ FN + F7 = Volume +
- ⊖ FN + F8 = Play/Pause
- ⊖ FN + F9 = Computer
- ⊖ FN + F10 = Mute
- ⊖ FN + F11 = Stop
- ⊖ FN + F12 = Favorites

Remarks: Some hotkeys function may not work because of the different devices system or application compatibility.