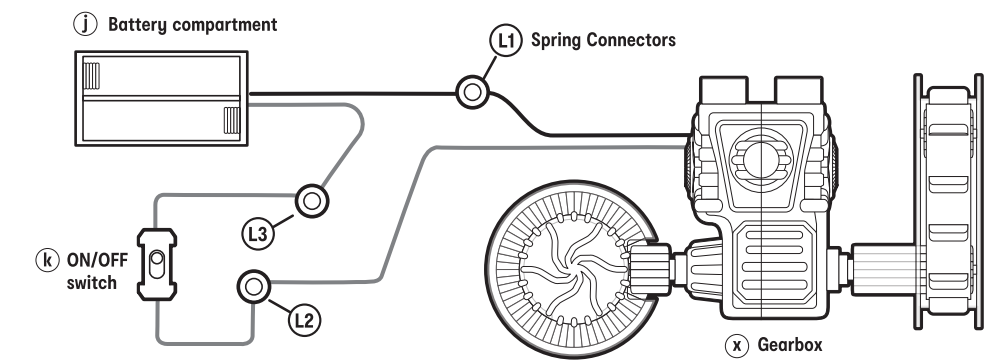


### BASIC CONNECTION PRINCIPLE

Wiring connections	Spring (L1)	Spring (L2)	Spring (L3)
Battery Compartment (j)	black	red	red
ON/OFF Switch (k)	black	red	red
Gearbox (x)	black	red	red



Ensure all wires are correctly connected to the battery terminals and spring connectors as stated in the wiring sequence and connections. Bend the spring terminal over and insert the exposed shiny conductor part of the wire into the spring terminal. Make sure the wire is securely connected into the spring terminal. If the circuit does not work, you can check the wire and spring terminal connection are properly connected and that the insulated plastic part of the wire has been correctly inserted into the spring terminal.

**WARNING! DO NOT SHORT-CIRCUIT THE BATTERY TERMINALS AND SPRING CONNECTORS. OTHERWISE IT MAY CAUSE OVERHEATING.**

### HOW TO PLAY

Insert 2x AA sized batteries (not included) into the battery compartment and put the balls onto the rail. Place the balls onto different positions of the rail before switching on the kit. Or you may switch on the kit and then put the balls onto the rail one by one, each separated by a certain time interval. Now you have a roller coaster system which looks as fun as an amusement ride!

If at any time in the future you should need to dispose of this product please note that waste electrical products should not be disposed of with household waste. Please recycle where facilities exist. Check with your local authority or retailer for recycling advice. (Waste Electrical and Electronic Equipment Directive)

KEYCODE: 43-264-322

MADE IN CHINA

© KMART AUSTRALIA LIMITED

FOR AU / NZ: IMPORTED FOR KMART STORES IN AUSTRALIA AND NEW ZEALAND.

KMART AUSTRALIA - 690 SPRINGVALE ROAD, MULGRAVE, VIC 3170 AUSTRALIA.

KMART NEW ZEALAND - REGIONAL OFFICE C/O KMART PAPAETOE STORE, HUNTERS PLAZA, GREAT SOUTH ROAD, PAPAETOE, AUCKLAND, NEW ZEALAND.

KMART CUSTOMER SERVICE  
AU: 1800 124 125 NZ: 0800 945 995

anko

## Build Your Own Roller Coaster Instruction Manual

- > learn about momentum and speed
- > create 2 actions with 1 motor
- > circuit is powered by a single gear box
- > rail arrangement and mechanical design allows the roller ball to circulate around the track

8+ years  
STEM  
SCIENCE  
TECHNOLOGY  
ENGINEERING  
MATHS



**WARNING:** BATTERIES ARE TO BE INSERTED WITH THE CORRECT POLARITY (+ AND -). DO NOT MIX DIFFERENT TYPES OF BATTERIES OR NEW AND USED BATTERIES. NON-RECHARGEABLE BATTERIES ARE NOT TO BE RECHARGED. RECHARGEABLE BATTERIES ARE ONLY TO BE CHARGED BY AN ADULT. RECHARGEABLE BATTERIES ARE TO BE REMOVED FROM THE TOY BEFORE BEING CHARGED. THE SUPPLY TERMINALS ARE NOT TO BE SHORT-CIRCUITED. REMOVE BATTERIES FROM THE TOY WHEN NOT IN USE FOR EXTENDED TIME OR WHEN BATTERIES BECOME EXHAUSTED. BATTERY INSTALLATION BY AN ADULT IS REQUIRED. DISPOSE OF BATTERIES RESPONSIBLY. DO NOT DISPOSE OF IN FIRE.

**WARNING:** FOR SAFETY REASONS, REMOVE ALL TAGS, LABELS AND PLASTIC FASTENERS BEFORE GIVING THIS TOY TO YOUR CHILD.

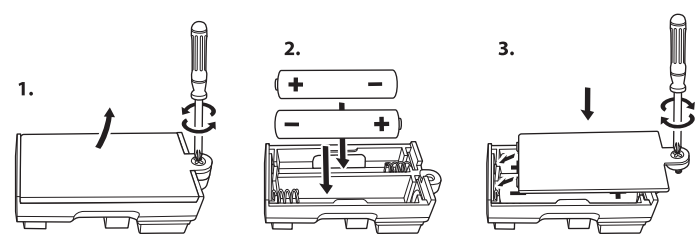
**WARNING:** HAIR ENTANGLEMENT MAY RESULT IF THE CHILD'S HEAD IS TOO CLOSE TO THE MOTORIZED UNIT OF THIS TOY. ADULT SUPERVISION AND ASSISTANCE IS REQUIRED.

**WARNING:** CHOKING HAZARD SMALL PARTS AND SMALL BALLS. NOT FOR CHILDREN UNDER 3 YEARS.

**WARNING:** CONTAINS FUNCTIONAL SHARP POINT ON THE LEADS.

PRODUCT MAY VARY SLIGHTLY FROM IMAGE SHOWN. PLEASE KEEP THE PACKAGING FOR FUTURE REFERENCE.

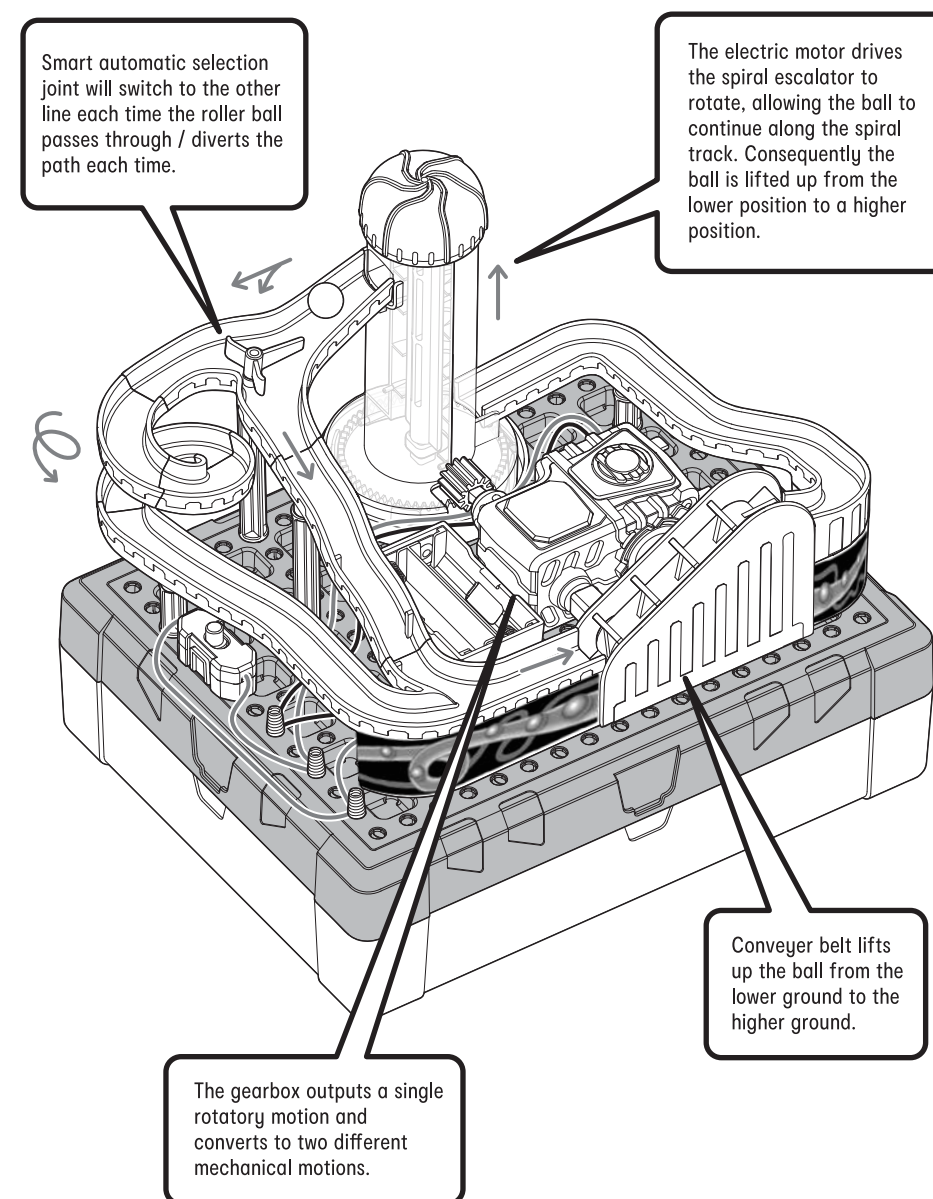
To insert batteries please unscrew battery cover with a screw driver. Insert the required batteries in accordance with battery polarity with + and - ends in the right position and then fix screw on the battery door to close the battery compartment case.



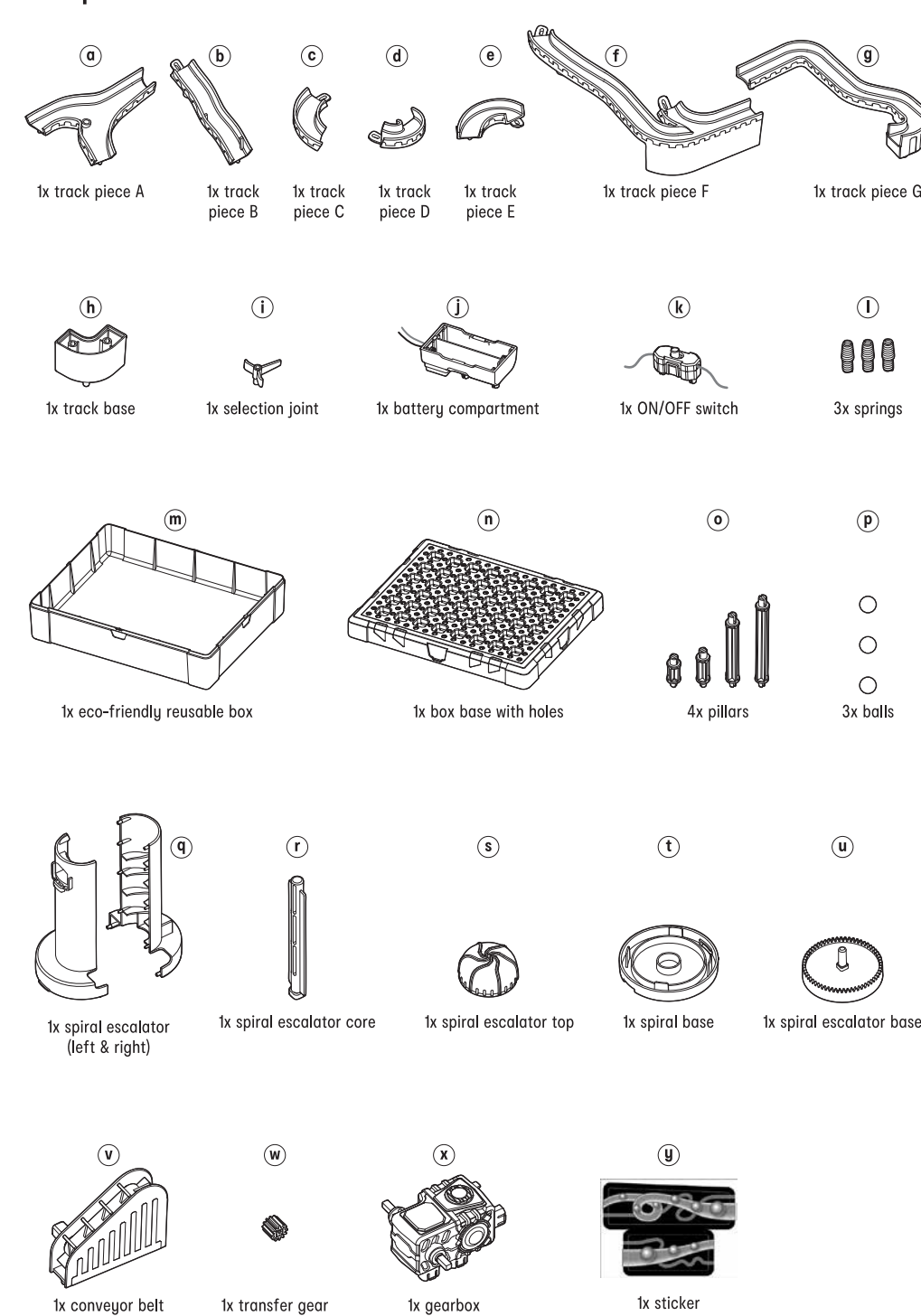
2 X AA  
REQUIRES 2 X 1.5V AA BATTERIES (NOT INCLUDED).

### EXPLANATION

Roller Coaster Ball Circuit is a mini circulating system powered by a single gearbox. Its rail arrangement and smart mechanical design allows the roller balls to circulate around the circuit.



### Components



### Assembling

