

142.00 mm

anko

43281183 Modular Touch LED Light Extension Tiles Instruction manual

Caution: This product is an extension kit for Anko Modular Touch LED Light (KC 43255160). This product cannot be operated independently. No more than 9 tiles (1x original pack + 1x extension kit) can be connected together. Additional extension kits are not supported.

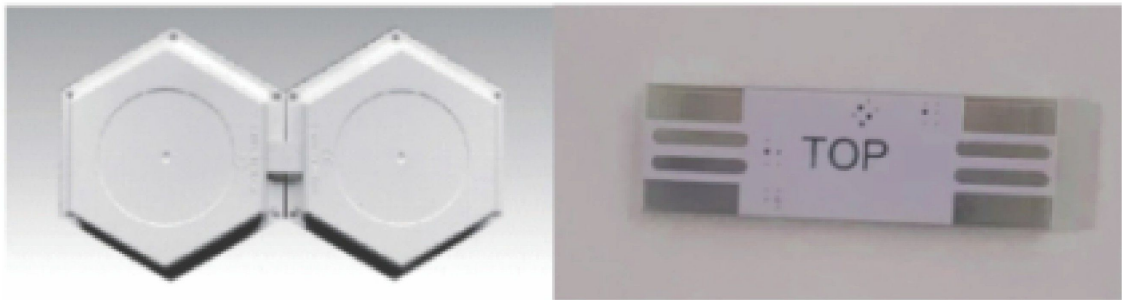
1. Product Specification

USB Input Power: DC 5V 2A (USB cable not included)

2. Accessories Quantities

Modular lights, double-adhesive tape x 3pcs, USB buckle x3pcs, Fixing buckle x 6pcs

3. Instruction of Assembling and Using



1. Connect the USB buckle at “top” side together with another module facing in the same direction.
2. Use the fixing buckle to secure the tiles together.
3. Do not connect more than 9 tiles together.
4. Connect the USB lead to an unoccupied port to power the lights.
5. Touch the center of each light to set the color of single light.
6. You can use the remote control in the keycode 43255160 to change the light color.

WARNING: USB ports are only suitable for connecting modular tiles together and connecting the set to USB power using the supplied cable. Do not connect more than 9 tiles together. Do not use the modular tiles to charge or power other devices.

210.00 mm