

# Assembly Instructions

## 43332793 HARPER OTTOMAN

### CARE INSTRUCTIONS:


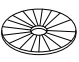
WIPE CLEAN WITH A DAMP CLOTH. DO NOT USE ABRASIVE MATERIAL AND SOLVENTS. SPOT CLEAN IF NEEDED. STORE IN A DRY PLACE. CHECK AND TIGHTEN ALL PARTS REGULARLY. FOR INDOOR AND DOMESTIC USE.

### WARNING:

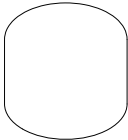
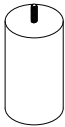
DO NOT STAND ON THE STOOL. USE ONLY ON A FLAT SURFACE. DO NOT USE UNTIL ALL SCREWS, BOLTS AND KNOBS ARE FIRMLY SECURED. ADULT ASSEMBLY REQUIRED. FAILURE TO FOLLOW THESE WARNINGS COULD RESULT IN SERIOUS INJURY.

MAXIMUM SAFE LOAD: 100KG.

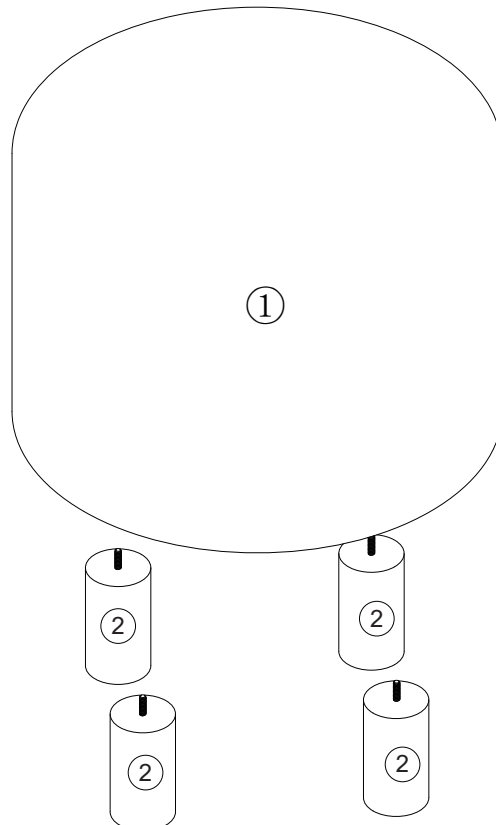
## 1 Hardware List

	A		4pcs		B		4pcs
---	---	--	------	---	---	--	------

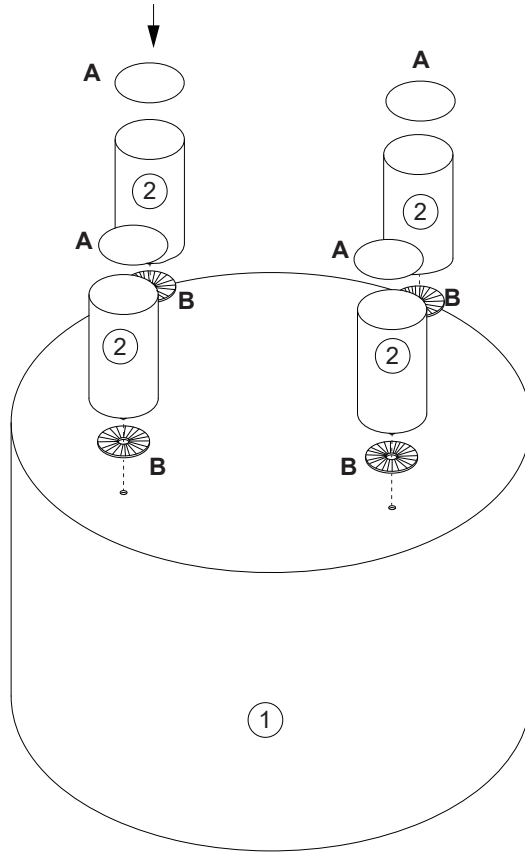
## 2 Parts List

			
①	1pc	②	4pcs

## 3



STEP 1 A - ○ × 4 B - ● × 4



STEP 2

