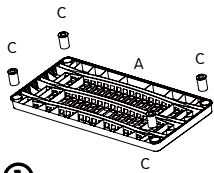


280x195mm

Assembly Instructions

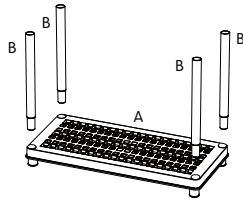
43340835

Heavy Duty 5 Tier Shelves



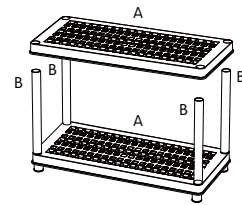
①

Turn any one shelf over and insert 4 feet. Press firmly to ensure each foot is secure.



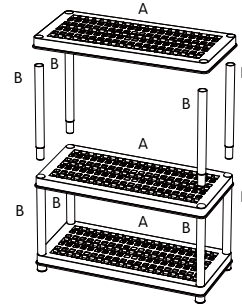
②

Turn over selected shelf and insert 4 pillars. Press firmly to ensure each pillar is secure.



③

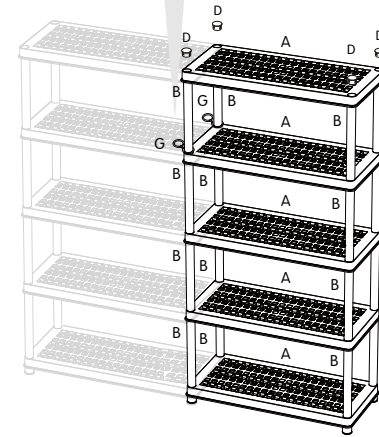
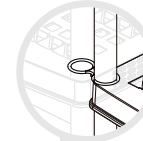
Place another shelf onto the pillars, and ensure the shelf is fully engaged by pressing firmly.



④

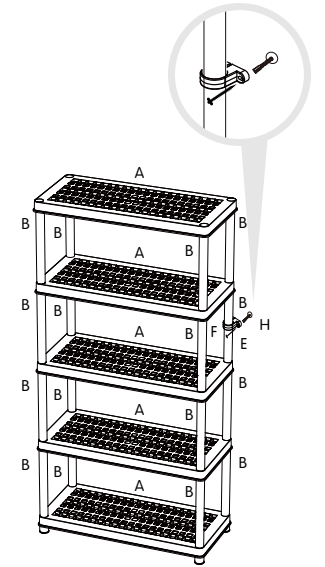
Insert the next set of 4 pillars into shelf and repeat step 3 for remaining shelves and pillars.

Use shelf connectors included in the pack to join 2 shelves together.



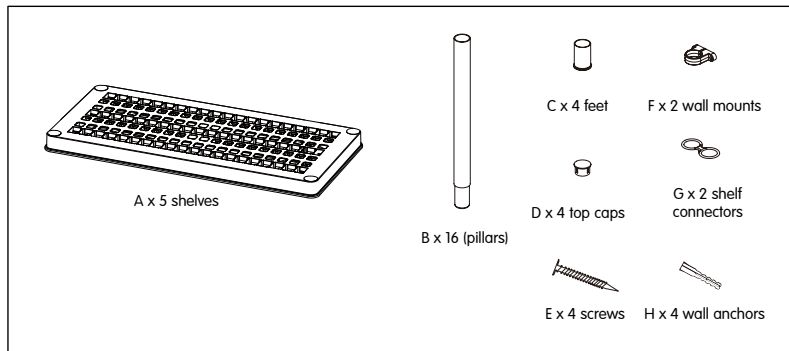
⑤

Insert 4 top caps into the top shelf to complete assembly. Shelf is now complete and ready to use.



⑥

To fix onto the wall, place the wall mounts to the pillars of the shelf. Screw wall anchors into place. Then, insert the screw and tighten.



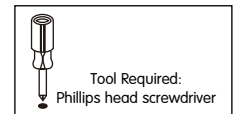
(Pack contains the above components)

Warning:

- It is strongly recommended that this product is permanent fixed to the wall.
- Please seek professional advice if you are in doubt of what fixing device to use.
- Regularly check that anchor are securely maintained.

- Stability of tall items may be affected by thick pile carpet or uneven floors.
- Caution: for your safety when attaching the anchor fixings, please note the following:
 - Check any electrical wires or plumbing inside the wall be drilling any holes

(if you are unsure please seek professional advice from a qualified tradesperson).



IMPORTANT:

- Please read assembly instructions carefully.
- Each shelf is certified to carry a maximum weight of 40kg/132.3lb. Please do not exceed this weight.
- It is recommended that weight is distributed evenly per shelf.
- No standing on, or hanging off shelves.
- Do not drag the 5 shelf storage unit, always lift it. Please ensure shelves are free of all items before doing so.



WARNING: PLEASE SECURE YOUR FURNITURE WITH THE SUPPLIED WALL FIXING. SCAN THE CODE FOR MORE INFORMATION.

