

anko



TOTE BAG

Intermediate Crochet

TOTE BAG

MEASUREMENTS

- › Width (approx) 45 cm
- › Length (approx, excluding handles) 45 cm

MATERIALS

- › Acrylic 12ply 100g x 7 balls
- › 2 balls 1st colour (C1-salt)
- › 2 balls 2nd colour (C2-desert)
- › 1 ball 3rd colour (C3-terracotta)
- › 1 ball 4th colour (C4-pink)
- › 1 ball 5th colour (C5-khaki)

HOOCS AND EXTRAS

- › A 6mm Crochet Hook, or size that gives correct tension.
- › A yarn needle.

TENSION

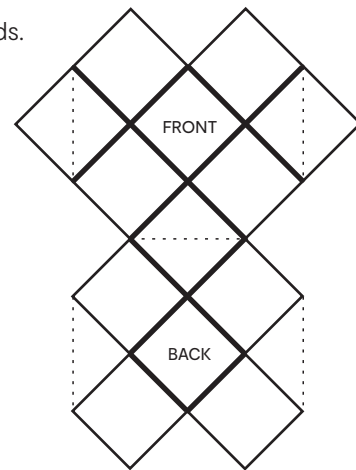
- › 5 rounds of Granny Square = 15 cm x 15 cm.
- › Although tension is not essential for this project, the yarn stated has been calculated based on this tension.

GRANNY SQUARE (UK terms – make 13)

- › Using 6.00mm hook and C5, ch4, join to 1st chain with a slip st.
- › **1st round** – Using C5, into chain circle ch3, tr2, * ch1, tr3, rep from * 2 more times, ch1, join with sl st to top of beg ch3. Fasten off.
- › **2nd round** – Using C4, join yarn to any corner ch sp, ch3, tr2, * into next ch sp, tr3, ch1, tr3, rep from * 2 more times, into last ch sp, tr3, ch1, join with sl st to top of beg ch3. Fasten off.
- › **3rd round** – Using C3, join yarn to any corner ch sp, ch3, tr2, * skip 3tr, into next ch sp tr3, into next corner ch sp, tr3, ch1, tr3, rep from * 2 more times, into beg ch sp, tr3, ch1, join with sl st to top of beg ch3. Fasten off.
- › **4th round** – Using C2, join yarn to any corner ch sp, ch3, tr2, * skip 3tr, into next 2 ch sps tr3, into next corner ch sp, tr3, ch1, tr3, rep from * 2 more times, into beg ch sp, tr3, ch1, join with sl st to top of beg ch3. Fasten off.
- › **5th round** – Using C1, join yarn to any corner ch sp, ch3, tr2, * skip 3tr, into next 3ch sps tr3, into next corner ch sp, tr3, ch1, tr3, rep from * 2 more times, into beg ch sp, tr3, ch1, join with sl st to top of beg ch3. Fasten off.

CONSTRUCTION

- › Follow diagram to construct bag, using mattress stitch or your preferred method of joining.
- › Using 6.00mm hook and C1, join yarn to any stitch around top of bag and sl st in every st to beginning sl st, sl st to first sl st.
- › Fasten off.
- › Weave in ends.



STRAP

- › Using 6.00mm hook and C1, ch 151.
- › **Row 1** – into 2nd ch from hook dc, dc into every st to end, ch1.
- › **Row 2** – dc into every st to end, ch1, turn.
- › **Row 3** – As row 2.
- › Fasten off, leaving a long tail to sew strap ends together.
- › Thread completed strap through corner ch sp of each of the top four squares.
- › Sew both ends of strap together ensuring that strap is not twisted.
- › Weave in ends.

