



1080P FHD Dual Channel Dash Camera with 3.0" OLED Touch Screen, WIFI & GPS



DSH-1052
USER MANUAL



CONTENTS

1.0 CAUTION	3
2.0 BATTERY WARNING	4
3.0 SD CARD WARNING	4
4.0 PRODUCT INFORMATION	5
5.0 INTRODUCTION	5
6.0 PACKAGING CONTENT	6
7.0 PRODUCT OVERVIEW	7
8.0 KEYS AND FUNCTIONS	8
9.0 GETTING STARTED	8
9.1 Inserting A Micro SD Card	8
9.2 Removing A Micro SD Card	9
9.3 Formating SD Card	9
9.4 Setting up Date / Time	10
9.5 Installing The DSH-1052	10
9.6 Installing The Rear Camera	11
9.6.1 Installation Guide	11
9.6.2 Rear Camera Wiring Diagram	12
9.6.3 Rear Camera Features	12
10.0 CONNECTING TO POWER	13
11.0 LED INDICATOR	14
12.0 REAL TIME ROAD ALERTS	14
12.1 Speed Camera Alert	15

12.2	Blackspot Alert	15
12.3	School Zone Alert.....	15
12.4	Railway Crossing Alert.....	15
12.5	Check speed Alert	15
13.0	INTERFACE	16
13.1	Video Mode.....	16
13.2	Play Back Menu	18
14.0	MENU SETTINGS	19
14.1	Video Setting Options.....	20
15.0	SOFTWARE PLAYBACK.....	24
16.0	INSTALLING APP ON SMART PHONE	25
17.0	WARRANTY TERMS & CONDITIONS	26
18.0	NOTES	27

1.0 CAUTION

- Ensure you are using your Dash Camera within your countries' road laws. Please make sure you are familiar with your local road legislation before use.
- Please set time and date before you use this device to record.
- The notifications given by the Dash Camera are suggestions only, please drive to the actual conditions.
- The system is to be used only for non-commercial use, within the limits permitted by the relevant laws
- The results of GPS positioning are only for reference. The Car Dash Cam will lose GPS positioning abilities when signal is blocked (e.g. driving through tunnels, enclosed car parks).
- GPS positioning accuracy may vary depending on weather and surroundings such as dense cities, tunnels, or forests. GPS satellite signals cannot pass through most solid materials. Tinted windows may also affect the GPS signal.
- The values displayed in this system, such as speed, position, and the distance warning, may be affected by the surrounding environment.
- Avoid using the Dash Camera in the vicinity of any devices that emit radio interference (eg. Microwave Ovens).
- It is considered normal operation for the Dash Camera to get warm during use.

2.0 BATTERY WARNING

- Always charge the Dash Camera using the provided charger. Improper charging of the Dash Camera may result in failure of the internal battery.
- Never dismantle the Dash Camera or expose the internal battery.
- Do not dispose of the Dash Camera in fire.
- Dispose of the Dash Camera observing local regulations being mindful of the internal battery.
- Do not attempt to replace or expose the internal battery.

3.0 SD CARD WARNING

This Dash Camera can only be used with Micro SD Cards, UHS Class 3 or above with 32GB - 128GB storage capacity (Not Included).

NOTES ON INSTALLATION

- It is advised that the Car Dash Cam is installed near the rear view mirror, at the top centre of the windshield for optimal operation.
- Make sure that the lens is within the range of the windscreen wiper to ensure a clear view when it rains.
- Do not touch the lens with your fingers. Finger prints left on the lens will result in unclear videos or photos. If photos or videos are blurred, please clean the lens gently with a microfibre cloth.
- Do not install the device on a tinted window. Doing so may damage the tint film and restrict the Car Dash Cam's GPS signal.

- Make sure that the installation position does not hinder or block the field of view or GPS signal.
- Only use the included cable to power the Car Dash Cam.
- The DSH-1052 is designed to be constantly connected to the included power supply, and is NOT designed to be used solely with the camera's built in battery.

4.0 PRODUCT INFORMATION

For latest manual and product updates please visit our website at www.dashmate.com.au

5.0 INTRODUCTION

Thank you for purchasing a Dashmate Dash Cam. Please read through instructions before attempting to install or use this product.

This User guide is designed to assist with the day to day operation of the DSH-1052.

Before attempting to use or install your Dashmate DSH-1052, please ensure you have read and understood all of the safety notes below.

- Avoid leaving your DSH-1052 in direct sunlight for extended periods of time in an unventilated space.
- Do not expose your DSH-1052 to liquids, excessive dusty conditions or temperatures exceeding 60°C.
- Only use the included cables to power and charge the DSH-1052.
- Please do not attempt to adjust the DSH-1052 position or settings whilst you are operating your vehicle.

- Please clean the windshield thoroughly removing all dust and dirt particles before fixing the adhesive mount.
- Since the mount sticks onto the windshield using a 3M adhesive, please ensure that the position of the camera is best located to capture the maximum viewing area.
- We suggest you to power-on the dash camera and test the playback image on screen first prior to removing the 3M tape for installation.
- Only remove the 3M tape when you are satisfied with the dash camera placement and image position are delivering the best possible image and view of the road ahead.
- Ensure you are using your DSH-1052 within your countries' road laws. Please make sure you are familiar with your local road legislation before use.

6.0 PACKAGING CONTENT

1 x DSH-1052 Dash Camera

1 x FHD Rear Camera

1 x Magnetic Mount

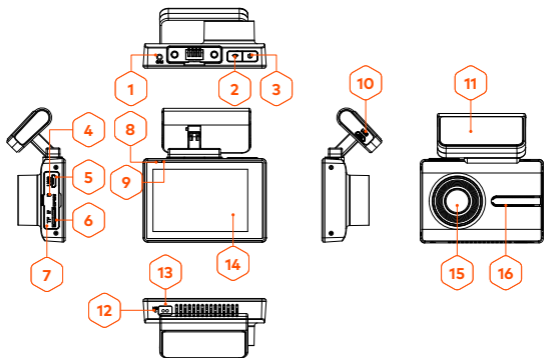
2 x Electrostatic Film

2 x 3M Adhesive Sticker

1 x 12/24v Power Cable

1 x User Manual

7.0 PRODUCT OVERVIEW



1. Rear Cam Input Port
2. WIFI ON/OFF
3. Power On/Off and Screen Standby
4. Reset
5. Mini USB Power & Port to connect PC
6. Micro SD Card Slot
7. Protective Cover for SD Card
8. Charging Indicator LED
9. Recording Indicator LED
10. Mini USB Power (secondary power)
11. 3M Mount with Inbuilt GPS
12. Microphone
13. Gesture Sensing Switch
14. OLED Touch Screen Display
15. Front Camera Lens
16. Speaker

NOTE:

- Mini USB Power (10) can be used as a second option to power the DVR. But not as a connector to transfer files to PC directly. Please use Mini USB Power (5) for file transfers.

8.0 KEYS AND FUNCTIONS

KEY	FUNCTION	INSTRUCTION
WiFi	Turn On/Off the WiFi	Short Press to turn WIFI On/Off
Power	Turn On/Off Power	Short Press to turn On/Off Screen. DVR will continue recording Long Press to Power On/Off
Reset	Reset	Insert a needle to reset Device
USB port	Charging /USB storage /Web camera	Can be used to connect to PC to download Videos. Can also be used to connect to car charger for Power.

9.0 GETTING STARTED

9.1 INSERTING A MICRO SD CARD

With the Car DVR turned off and the screen facing towards you insert your Micro SD Card (not included) in the slot on the right side of the DSH-1052 with the text on the Micro SD card away from you. Push the memory card in until a click is heard.

9.2 REMOVING A MICRO SD CARD



Ensure that the DSH-1052 is powered off, and with your thumbnail press in the Micro SD Card until a click is heard. The Micro SD Card will eject from the DSH-1052 when released.

9.3 FORMATING SD CARD

Please format the SD card by following steps below:

NOTE:




- All data previously stored on SD card will be deleted.

1. Touch  to stop recording
2. Touch  to enter General Settings
3. Scroll left and right using the arrow keys.
4. Touch Format and confirm formatting by pressing OK

NOTE:

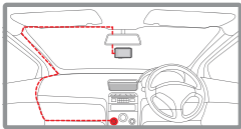
- Micro SD Card is not included.
- Do not remove or insert the memory card while the Car DVR is turned on as this may damage the memory card or corrupt the memory cards stored data.
- Please use a UHS Class 3 or higher rated micro SD card with a minimum of 32GB and a maximum of 128GB capacity.
- Please format the Micro SD card before the initial use.
- When removing the memory card, be careful as the card may eject quickly.

9.4 SETTING UP DATE / TIME

1. Touch to  stop recording
2. Touch  to enter General Settings
3. Scroll down to date/time section.
4. Touch on date/time to select menu, edit the parameters by using the up and down keys.
5. Touch OK to confirm and move to next digit.
6. Touch  to return to save settings and return to previous menu.

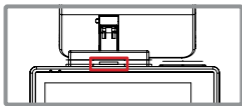
9.5 INSTALLING THE DSH-1052

1. Clean the interior of your windscreen ensuring that the desired point of installation is free of dust and is not obstructing the drivers' view.
2. **OPTIONAL:** Remove the protective layer from the Electrostatic film (Provided) and place it on your wind screen. This helps to easily remove the 3M adhesive from your wind screen with out any adhesive residue.
3. Remove the protective stickers from the Car DVR and the 3M mount.
4. Press the mount base firmly against the windscreen and hold for 30 seconds.
5. Insert the power cable adapter onto the dash camera power socket. Then insert the rear camera in the CAM port on DVR.



NOTE:

- It is advised that the DSH-1052 is installed in the centre of the windscreen behind the rear view mirror.

**NOTE:**

- Ensure the notch on the mount is facing the back of the DVR.

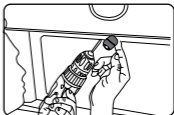
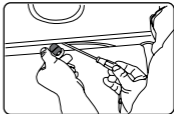
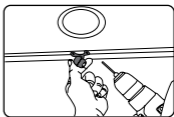
9.6 INSTALLING THE REAR CAMERA

9.6.1 INSTALLATION GUIDE

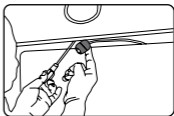
Select a flat and centred location near the number plate lamp at the rear of the vehicle to mount camera.

Attach tape to the bracket of the camera to hold the camera in position while installing, and drill two small holes, one for the first screw, the second to run the reverse camera cable through.

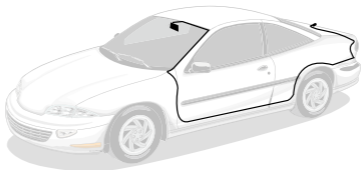
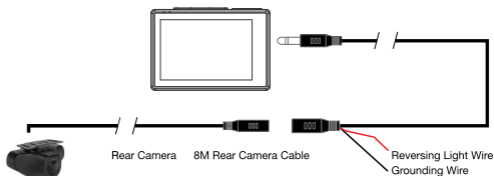
1. Select a flat and centred location near the number plate lamp at the rear of the vehicle to mount camera.
2. Attach tape to the bracket of the camera to hold the camera in position while installing, and drill two small holes, one for the first screw, the second to run the reverse camera cable through.
3. Use a screw driver to fix the first screw, leaving the screw loose enough to adjust the camera.
4. Insert the camera wire through the intended drilled hole checking the installation position.



5. Mark the position suitable for the second screw and drill a small hole for it.
6. Fix the second screw and securely tighten both screws.



9.6.2 REAR CAMERA WIRING DIAGRAM




9.6.3 REAR CAMERA FEATURES

After successfully installing and connecting of the rear camera into the main DVR, the rear camera will be displayed on the Dash Cam's 3.0" OLED Screen.

Both Cameras will instantaneously start recording after

DVR is powered ON.

Both Front and Rear Camera images will now be displayed on your Dash Camera's 3.0" OLED Screen, you can switch between by using the  Key.

Display can switch between:

1. Full Front Camera view
2. Full Rear Camera view
3. Full Front with small window for Rear Camera

When your vehicle is in reverse gear, the display will change to the Rear Camera view with Reversing Grid Lines to assist the driver when reversing / parking.

10.0 CONNECTING TO POWER

Only use the included charger to power and charge the Car DVR.

1. Once the Car DVR is securely installed on your vehicle's windscreen, plug the DC Power Plug into your vehicle's cigarette lighter.
2. Run the power cable along your vehicle's console and windscreen and plug the USB Micro plug into the Car DVR and the USB A end into the DC Power Plug.

NOTES:

- It is recommended that the Car DVR is installed behind your vehicle's rear view mirror.
- Make sure that the camera view is not obstructed by any window tint or any other objects.

- The DSH-1052 is designed to be constantly powered by the included DC Power Plug. The internal battery is designed to hold saved settings and power the camera when in Park Mode. The battery is NOT designed for primary use.

11.0 LED INDICATOR

- Continuous Red LED shows camera's internal battery is getting charged.
- Continuous blue shows it is not recording, flashing blue shows it is recording.

12.0 REAL TIME ROAD ALERTS

Your Dash Camera comes with the added feature of providing real time road safety alerts. The alerts will be displayed on the OLED Screen showing your actual live speed, speed limit (if applicable) and distance to the alert.

These alerts can be individually disabled from the settings menu.

To Enter the settings menu

1. Stop Recording.
2. Press Settings Key.

**All Alert types are listed below.
(Visual and Audio Alerts can be turned off).**

NOTES:

- Here Maps does not support School Zone & Accident Blackspot Alerts for New Zealand.

12.1 SPEED CAMERA ALERT

Will alert you of Speed and Red light cameras at your designated distance. The alert will show the speed limit with you current speed and a count down of the distance.

12.2 BLACKSPOT ALERT

Speed camera alerts you before a high accident zone.

12.3 SCHOOL ZONE ALERT

The School zone alert gives you the alert before the school zone.

12.4 RAILWAY CROSSING ALERT

Railway Crossing alert gives you the alert before the railway crossing.

12.5 CHECK SPEED ALERT

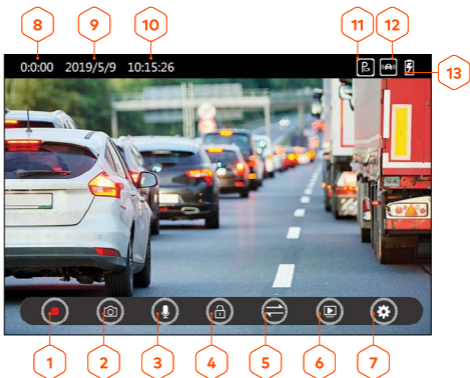
Check speed alert will help you to check the speed of your odometer and compare with the check speed alert

NOTE:


- Distance of alerts to start can be selected from the Setting Menu. Distance can be set to 100M, 200M, 300M, 400M and 500M.

13.0 INTERFACE

13.1 VIDEO MODE



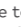
1. Start/Stop Recording:

Touch the  on the touch screen to start or stop recording.


2. Photo:

Touch the  on the touch screen to make a snapshot.


3. Microphone:

Touch the  on the touch screen to turn On/Off microphone which will mute the audio on recorded video.


4. Lock:

Touch the  on the touch screen to lock the current recording. Locked file will not be overwritten during loop recording.


5. Screen:

Touch the  on the touch screen to change the display mode from single to PIP.

6. Playback:

Touch the  on the touch screen to go to Playback Menu.

7. Settings:

Touch the  on the touch screen to go to Setting Menu.

8. Time of recorded video

9. Date


10. Time

11. Park Mode

12. G Sensor

13. Battery Charging indicator




13.2 PLAY BACK MENU

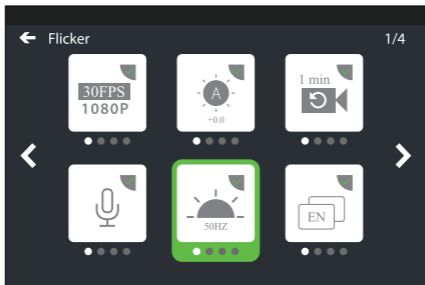
Touch  in the Video Menu to enter into Play Back Menu



1. Front locked and Parking mode videos.
2. Rear locked and Parking mode videos.
3. Front normal videos.
4. Rear normal videos.
5. Pictures/Snapshots.
6. Delete the selected file.
7. Lock or unlock the selected file.

14.0 MENU SETTINGS

1. Touch  to Stop Recording.
2. Touch  to enter into Setting Menu.
3. Press the Side keys to scroll through menu.
4. Touch on the setting you want to change.
5. Touching the icon multiple times will change the options functionality with a tick marked above, which indicates a particular option is active.
6. Touch  Back Key to return to previous Menu.



14.1 VIDEO SETTING OPTIONS

SETTING	OPTIONS	DESCRIPTION
Resolution	FHD 1080p 30fps (1920 x 1080) HD 720p 30fps (1080 x 720)	Resolution decides the size of video and the video quality of the recorded video. Default: FHD 1080p 30 fps
Exposure	2.0~ -2.0 EV	Exposure compensation allows you to adjust and control the level of exposure, when in driving in low light, the exposure value (such as +1EV, +2EV) can be increased to highlight the clarity of the picture. Default: 0.0
Loop Recording	Off 1 Minute 3 Minutes 5 Minutes	Loop Recording defines the length of time the DSH-1052 records before creating a new file. Using the Off setting will record the longest possible loops under the file size of 1 GB (around 5 minutes). Default: 3 Mins
Microphone	Off / On	Turning this setting off mutes the built in microphone. Default: On
Language	Select Language	Select Menu Language. Default: English
G- Sensor	Off / High / Medium / Low	High increases the sensitivity of Dash Camera. Default: Low

VIDEO SETTING OPTIONS CONT'

SETTING	OPTIONS	DESCRIPTION
Park Mode	On / Off	<p>Park Mode helps to make your car safe by recording the video even when the Engine is switched off. Your DVR will record the incidents when ever it detects an impact and the G-Sensor is triggered. Park Mode will record a maximum of 10 instances during a 24 hour period, once the battery has been fully charged.</p> <p>Default: Off</p>
Volume	Option Off/Low /Mid/ High	<p>To control the volume of inbuilt loud speaker.</p> <p>Default: High</p>
Auto Screen Off	Off / 1 / 3 / 5 Minutes	<p>Auto Screen Off setting determines the amount of time before the display screen turns off.</p> <p>(DSH-1052 will keep on recording even if the display is Off).</p> <p>Default: Off</p>
Format SD card Warning	Off /15/30/60 days	<p>Sets a reminder to format your SD Card in case of excess locked footage files or if SD card is corrupted.</p> <p>Default: 60 Days</p>
Satellite Info	N/A	<p>Shows the number of satellites latched on to the internal GPS.</p>
WIFI	On / Off	<p>To Switch On/Off WIFI.</p> <p>Default: On</p>

VIDEO SETTING OPTIONS CONT'

SETTING	OPTIONS	DESCRIPTION
Speed Unit	KM/H MPH	Speed Unit determines the metric used when the DVR is calculating speed. Default: KM/H
ADAS	On / Off	LDWS gives lane departure warning. Default: Off
Storage	Displays the storage space on SD card in different default folders.	Displays the storage space on SD card.
Speed Camera Alert	On / Off	To turn On/Off speed camera alerts. Default: On
Red Light Camera Alert	On / Off	To turn On/Off Red Light Camera Alert. Default: On
Black Spot Alert	On / Off	To turn On/Off black spot alerts. <i>* Here Maps does not support School Zone & Accident Blackspot Alerts for New Zealand.</i> Default: On
School Zone Alert	On / Off	To turn On/Off school zone alert. <i>* Here Maps does not support School Zone & Accident Blackspot Alerts for New Zealand.</i> Default: On

VIDEO SETTING OPTIONS CONT'

SETTING	OPTIONS	DESCRIPTION
Alert Distance	100 / 200 / 300 / 400 / 500 Metres	Distance from where alerts will start working. Default: 300 M
Alert Mode	Video Audio + Video	Selecting video will turn off the audio alert.
License Plate	Input License Plate	Input your car license plate which will be watermarked on the recorded footage. Up and Down Keys to change input. Touch the OK Button to move to the next section.
Date/Time	Input Date/time	Input DD/MM/YYYY Up and Down Keys to change input. Touch the OK Button to move to the next section. Touch back arrow to save settings and move to previous Menu.
Format SD Card	Cancel / Ok	Format the inserted Micro SD card, deleting all photos, videos and date.
Factory Reset	Cancel / Ok	Restore Factory Settings.
Version	N/A	Displays the installed firmware version.

15.0 SOFTWARE PLAYBACK

The Inbuilt GPS unit will record your vehicles speed and GPS location for playback alongside your footage when viewed on a computer.

To play back the GPS footage, Please download the player from www.dashmate.com.au/DSH-1052 and run it on your windows player.

To view images from Dash Camera, you will need to remove the Micro SD Card and transfer the files to you computer using a Micro SD Card Slot or compatible USB adapter.

Once files have been transferred to your computer, please select the folder and select the file you wish to view or playback.



NOTE

- Apple may not give permission to run the software , Please enter in your Security and Privacy Settings and give permission to the GPSplayer.pkg to open anyway.

16.0 INSTALLING APP ON SMART PHONE

Please download the DSH-1052 App from the Google Play Store or Apple App Store depending on your mobile device.

After successfully downloading and installing the app on your mobile. Search for DSH-1052-XXXX (the last 4 digit are unique to each dash camera) WIFI connection and connect it on your mobile device by entering password "12345678".

Open the app and sync it with the DVR, this allow you to access your the videos and app settings.

17.0 WARRANTY TERMS & CONDITIONS

Our goods come with guarantees that cannot be excluded under the Australian & New Zealand Consumer Law. You are entitled to a replacement or refund for a major failure and for compensation for any other reasonably foreseeable loss or damage. You are also entitled to have the goods repaired or replaced if the goods fail to be of acceptable quality and the failure does not amount to a major failure.

This warranty is provided in addition to your rights under the Australian & New Zealand Consumer Law.

Directed Electronics warrants that this product is free from defects in material and workmanship for a period of 12 months from the date of purchase or for the period stated on the packaging. This warranty is only valid where you have used the product in accordance with any recommendations or instructions provided by Directed Electronics.

This warranty excludes defects resulting from alterations of the product, accident, misuse, abuse or neglect

In order to claim the warranty, you must return the product to the retailer from which it was purchased or if that retailer is part of a National network, a store within that chain, along with satisfactory proof of purchase. The retailer will then return the goods to Directed Electronics. Directed Electronics will repair, replace or refurbish the product at its discretion. The retailer will contact you when the product is ready for collection. All costs involved in claiming this warranty, including the cost of the retailer sending the product to Directed Electronics, will be borne by you.

Email: service@dashmate.com.au

TECHNOLOGY DRIVEN™

