



4K ULTRA-HD Dual Channel Dash Camera with 3.0" OLED Touch Screen, WIFI & GPS



DSH-1252
USER MANUAL





CONTENTS

1.0 CAUTION	3
2.0 BATTERY WARNING	4
3.0 SD CARD WARNING	4
4.0 PRODUCT INFORMATION	5
5.0 INTRODUCTION	5
6.0 WHAT'S IN THE BOX	6
7.0 PRODUCT OVERVIEW	7
8.0 KEYS AND FUNCTIONS	8
9.0 GETTING STARTED	8
9.1 Inserting A Micro SD Card	8
9.2 Removing A Micro SD Card	9
9.3 Formating A Micro Sd Card	9
9.4 Setting up Date / Time	10
9.5 Installing The DSH-1252	10
9.6 Installing The Rear Camera	11
9.6.1 Installation Guide	11
9.6.2 Rear Camera Wiring Diagram	12
9.6.3 Rear Camera Features	12
10.0 CONNECTING TO POWER	13
11.0 LED INDICATOR	14

12.0 REAL TIME ROAD ALERTS	14
12.1 Speed Camera Alert.....	15
12.2 Blackspot Alert	15
12.3 School Zone Alert.....	15
12.4 Railway Crossing Alert.....	15
12.5 Check speed Alert	15
13.0 INTERFACE	16
13.1 Video Mode.....	16
13.2 Play Back Menu	18
14.0 MENU SETTINGS	19
14.1 Video Setting Options.....	20
14.2 General Setting Options	24
15.0 SOFTWARE PLAYBACK	27
16.0 INSTALLING THE APP ON YOUR SMART PHONE.....	27
17.0 WARRANTY TERMS & CONDITIONS	28
18.0 NOTES	35

1.0 CAUTION

- Ensure you are using your Dash Camera within your countries' road laws. Please make sure you are familiar with your local road legislation before use.
- Please set time and date before you use this device to record.
- The notifications given by this Dash Camera are suggestions only, please drive to the actual conditions.
- The system is to be used only for non-commercial use, within the limits permitted by the relevant laws
- The results of GPS positioning are for reference only. The Car Dash Cam will lose GPS positioning abilities when signal is blocked (e.g. driving through tunnels, enclosed car parks).
- GPS positioning accuracy may vary depending on weather and surroundings such as dense cities, tunnels, or forests. GPS satellite signals cannot pass through most solid materials. Tinted windows may also affect the GPS signal.
- The values displayed in this system, such as speed, position, and distance warning, may be affected by the surrounding environment.
- Avoid using the Dash Camera in the vicinity of any devices that emit radio interference (eg. Microwave Ovens).
- It is considered normal operation for the Dash Camera to get warm during use.

2.0 BATTERY WARNING

- Always charge the Dash Camera using the provided charger. Improper charging of the Dash Camera may result in failure of the internal battery.
- Never dismantle the Dash Camera or expose the internal battery.
- Do not dispose of the Dash Camera in fire.
- Dispose of the Dash Camera observing local regulations being mindful of the internal battery.
- Do not attempt to replace or expose the internal battery.

3.0 SD CARD WARNING

This Dash Camera can only be used with Micro SD Cards, UHS Class 3 or above with 32GB - 128GB storage capacity (Not included). Please format the SD card before use by following the instructions in Section 9.3 on page 9.

NOTES ON INSTALLATION

- It is advised that the Car Dash Cam is installed near the rear view mirror, at the top centre of the windshield for optimal operation.
- Make sure that the lens is within the range of the windscreen wiper to ensure a clear view when it rains.
- Do not touch the lens with your fingers. Finger prints left on the lens will result in unclear videos or photos. If photos or videos are blurred, please clean the lens gently with a microfibre cloth.
- Do not install the device on a tinted window. Doing so may damage the tint film and restrict the Car Dash Cam's GPS signal.

- Make sure that the installation position does not hinder or block the field of view or GPS signal.
- Only use the included cable to power the Car Dash Cam.
- The DSH-1252 is designed to be constantly connected to the included power supply, and is NOT designed to be used solely with the camera's built in battery.

4.0 PRODUCT INFORMATION

For the latest manual and product updates please visit our website at www.dashmate.com.au

5.0 INTRODUCTION

Thank you for purchasing a Dashmate Dash Cam. Please read through these instructions before attempting to install or use this product.

This User guide is designed to assist with the day to day operation of the Dashmate's DSH-1252 Dash Camera.

Before attempting to use or install your Dashmate DSH-1252, please ensure you have read and understood all of the safety notes below.

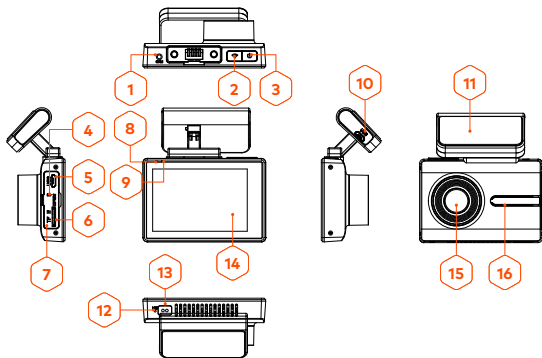
- Avoid leaving your DSH-1252 in direct sunlight for extended periods of time in an unventilated space.
- Do not expose your DSH-1252 to liquids, excessive dusty conditions or temperatures exceeding 60°C.
- Only use the included cables to power and charge the DSH-1252.
- Please do not attempt to adjust the DSH-1252 position or settings whilst you are operating your vehicle.

- Please clean the windshield thoroughly, removing all dust and dirt particles before fixing the adhesive mount.
- Since the mount sticks onto the windshield using a 3M adhesive, please ensure that the position of the camera is best located to capture the maximum viewing area.
- We suggest you to power-on the dash camera and test the playback image on screen first prior to removing the 3M tape for installation.
- Only remove the 3M tape when you are satisfied that the dash camera placement and image position are delivering the best possible image and view of the road ahead.
- Ensure you are using your DSH-1252 within your countries' road laws. Please make sure you are familiar with your local road legislation before use.

6.0 WHAT'S IN THE BOX

1 x DSH-1252 Dash Camera	2 x Electrostatic Films
1 x Rear Camera	2 x 3M Adhesive Stickers
1 x Magnetic Mount	1 x 12/24v Power Cable
	1 x User Manual

7.0 PRODUCT OVERVIEW



1. Rear Cam Input Port
2. WIFI ON/OFF
3. Power On/Off and Screen Standby
4. Reset
5. Mini USB Power & Port to connect PC
6. Micro SD Card Slot
7. Protective Cover for SD Card
8. Recording Indicator LED
9. Charging Indicator LED
10. Mini USB Power (secondary power)
11. 3M Mount with Inbuilt GPS
12. Microphone
13. Gesture Sensing Switch
14. OLED Touch Screen Display
15. Front Camera Lens
16. Speaker

NOTE

- Mini USB Power (10) can be used as a second option to power the DVR. But not as a connector to transfer files to PC directly. Please use Mini USB Power (5) for file transfers.

8.0 KEYS AND FUNCTIONS

KEY	FUNCTION	INSTRUCTION
WIFI	Turn On/Off the WIFI	Short Press to turn WIFI On/Off
Power	Turn On/Off Power	Short Press to turn On/Off Screen. DVR will continue recording. Long Press to Power On/Off
Reset	Reset	Insert a pin or paperclip end to reset Device
USB port	Charging /USB storage /Web camera	Can be used to connect to PC to download Videos. Can also be used to connect to car charger for Power.

9.0 GETTING STARTED

9.1 INSERTING A MICRO SD CARD

With the Car DVR turned off and the screen facing towards you insert your Micro SD Card (not included) in the slot on the right side of the DSH-1252 with the text on the Micro SD card away from you. Push the memory card in until a click is heard.

9.2 REMOVING A MICRO SD CARD



Ensure that the DSH-1252 is powered off, and with your thumbnail press in the Micro SD Card until a click is heard. The Micro SD Card will eject from the DSH-1252 when released.

9.3 FORMATING A MICRO SD CARD

Please format the Micro SD card by following the steps below:

NOTE:




- All data previously stored on the Micro SD card will be deleted.

1. Touch  to stop recording
2. Touch  to enter General Settings
3. Scroll down to Format
4. Touch Format and confirm formatting.

NOTE:

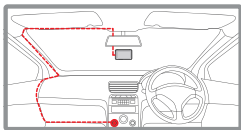
- Micro SD Card is not included.
- Do not remove or insert the Micro SD card while the Car DVR is turned on as this may damage the memory card or corrupt the memory card stored data.
- Please use a UHS Class 3 or higher rated Micro SD card with a minimum of 32GB and a maximum of 128GB capacity.
- Please format the Micro SD card before initial use.
- When removing the Micro SD, be careful as the card may eject quickly.

9.4 SETTING UP DATE / TIME

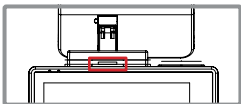
1. Touch  to stop recording
2. Touch  to enter General Settings
3. Scroll down to date/time section.
4. Touch on date/time to select menu, edit the parameters by using the up and down keys.
5. Touch  to return to previous Menu

9.5 INSTALLING THE DSH-1252

1. Clean the interior of your windscreen ensuring that the desired point of installation is free of dust and is not obstructing the drivers' view.
2. **OPTIONAL:** Remove the protective layer from the Electrostatic film (Provided) and place it on your windscreen. This helps to easily remove the 3M adhesive from your windscreen with out any adhesive residue.
3. Remove the protective stickers from the Car DVR and the 3M mount.
4. Press the mount base firmly against the windscreen and hold for 30 seconds.
5. Insert the power cable adapter into the dash camera power socket. Then insert the rear camera in the CAM port on DVR.

**NOTE:**

- It is advised that the DSH-1252 is installed in the centre of the windscreen behind the rear view mirror.

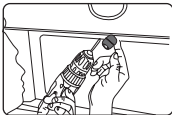
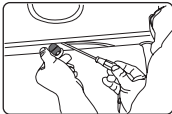
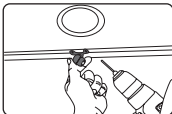
**NOTE:**

- Ensure the notch on the mount is facing the back of the DVR.

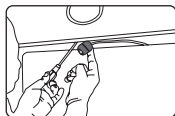
9.6 INSTALLING THE REAR CAMERA

9.6.1 INSTALLATION GUIDE

1. Select a flat and centred location near the number plate lamp at the rear of the vehicle to mount the dash camera.
2. Attach tape to the bracket of the camera to hold the camera in position while installing. Drill two small holes, one for the first screw, the second to run the reverse camera cable through.
3. Use a screw driver to fix the first screw, leaving the screw loose enough to adjust the camera.



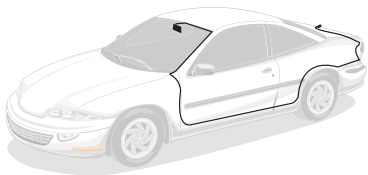
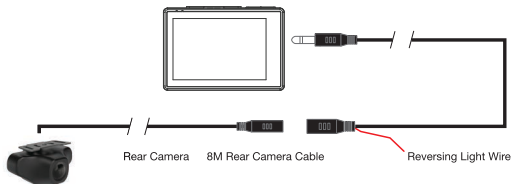
4. Insert the camera wire through the intended drilled hole checking the installation position.



5. Mark the position suitable for the second screw and drill a small hole for it.

6. Fix the second screw and securely tighten both screws.

9.6.2 REAR CAMERA WIRING DIAGRAM




9.6.3 REAR CAMERA FEATURES

After successfully installing and connecting the rear

camera to the Dash Cam DVR, the rear camera will be displayed on the Dash Cam's 3.0" OLED Screen.

Both Cameras will instantaneously start recording after the Dash Cam is powered ON.

Both Front and Rear Camera images will now be displayed on your Dash Camera's 3.0" OLED Screen, you can switch between them by using the  Key.

The display can switch between:

1. Full Front Camera view
2. Full Rear Camera view
3. Full Front Camera view with small window for Rear Camera

When your vehicle is in reverse gear, the display will change to the Rear Camera view with Reversing Grid Lines to assist the driver when reversing / parking.

10.0 CONNECTING TO POWER

Only use the included charger to power and charge the Dash Cam.

1. Once the Dash Cam is securely installed on your vehicle's windscreen, plug the DC Power Plug into your vehicle's cigarette lighter.
2. Run the power cable along your vehicle's console and windscreen and plug the USB Micro plug into the Dash Cam and the USB A end into the DC Power Plug.

NOTES:

- It is recommended that the Dash Cam is installed behind your vehicle's rear view mirror.

- Make sure that the camera view is not obstructed by any window tint or any other objects.
- The DSH-1252 is designed to be constantly powered by the included DC Power Plug. The internal battery is designed to hold saved settings and power the camera when in Park Mode. The battery is NOT designed for primary use.

11.0 LED INDICATOR

- A flashing LED indicates the camera's internal battery is charging and is recording.
- A continuous red LED indicates the camera is charging but not recording.

12.0 REAL TIME ROAD ALERTS

Your Dash Camera comes with the added feature of providing real time road safety alerts. The alerts will be displayed on the OLED Screen showing your actual live speed, speed limit (if applicable) and distance to the alert.

These alerts can be individually disabled from the settings menu.

To Enter the settings menu

1. Stop Recording.
2. Press Settings Key.

**All Alert types are listed below.
(Visual and Audio Alerts can be turned off).**

NOTES:

- Here Maps does not support School Zone & Accident Blackspot Alerts for New Zealand.

12.1 SPEED CAMERA ALERT

The camera alerts you of Speed and Red light cameras at your designated distance. The alert will show the speed limit with your current speed and a count down of the distance.

12.2 BLACKSPOT ALERT

The camera alerts you before a high accident zone.

12.3 SCHOOL ZONE ALERT

School Zone Alert times can be changed in the School Zone alert setting.

12.4 RAILWAY CROSSING ALERT

The camera alerts you before a railway crossing.

12.5 CHECK SPEED ALERT

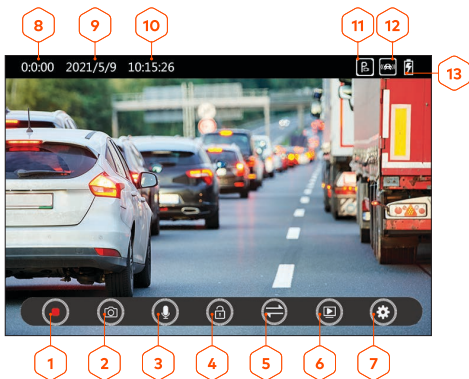
Check speed alert will help you to check the speed of your odometer and compare with the check speed alert

NOTE:


- School Alert Zone can be set as per you local laws. Enter a time for both AM and PM. School zone alerts will only activate during the set time.
- The distance of alert starts can be selected from the Setting Menu. Distance can be set to 100M, 200M, 300M, 400M and 500M.

13.0 INTERFACE

13.1 VIDEO MODE




1. Start/Stop Recording:

Touch the  on the touch screen to start or stop recording.


2. Photo:

Touch the  on the touch screen to take a snapshot.


3. Microphone:

Touch the  on the touch screen to turn the microphone On/Off which will mute the audio during recording.


4. Lock:

Touch the  on the touch screen to lock the current recording. A locked file will not be overwritten during loop recording.


5. Screen:

Touch the  on the touch screen to change the display mode from single to PIP (Picture in Picture).

6. Playback:

Touch the  on the touch screen to go to the Playback Menu.

7. Settings:

Touch the  on the touch screen to go to the Setting Menu.

8. Time of recorded video

9. Date


10. Time

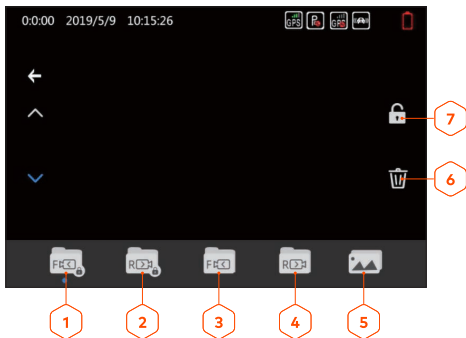
11. Park Mode

12. G Sensor

13. Battery Charging indicator



13.2 PLAY BACK MENU

Touch  in the Video Menu to enter the Play Back Menu



1. Front locked and Parking mode videos.
2. Rear locked and Parking mode videos.
3. Front normal videos.
4. Rear normal videos.
5. Pictures/Snapshots.
6. Delete the selected file.
7. Lock or unlock the selected file.



14.0 MENU SETTINGS

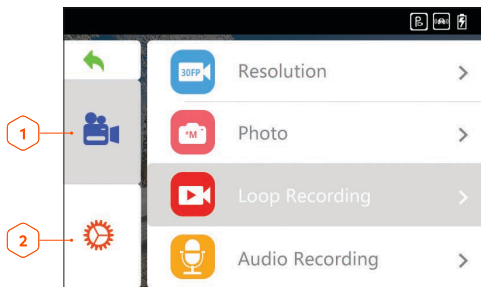
1. Touch  to Stop Recording
2. Touch  to enter the Settings Menu

VIDEO AND GENERAL SETTINGS

The Setting Menu is divided into two sections;

1. **Video Settings**
2. **General Settings**

Touch the  on the screen to enter the Video Parameter Settings or  to enter into General Settings.



Touching the option will show a tick icon, which indicates a particular option as being selected.

Touching the option again will remove the tick icon which means it has been deselected.

14.1 VIDEO SETTING OPTIONS

SETTING	OPTIONS	DESCRIPTION
Resolution	4K UHD 2560*1440P30 2304*1296P30 2304*1296P30 1920*1080P60	Resolution chooses the size of video and the quality of the recorded video. Default : 4K UHD
Video Compression	H264 H265	To change the compression format of the recorded Video. Press OK to change to H264. Default: H265
Loop Recording	Off 1 Minute 3 Minutes 5 Minutes	Loop Recording defines the length of time the DSH-1252 records before creating a new file. Using the Off setting will record the longest possible loops under the file size of 1 GB (around 5 minutes). Default: 3 Mins
Stamp	To Turn On/Off the stamps on recorded video. Date/Time GPS Coordinates License Plate	Turn ON/OFF all watermarks on the recorded video. Date/Time Stamp will have the current Date time marked. GPS coordinate Stamps will have the GPS coordinates marked. License plate stamp will have license plate stamped Default: On

VIDEO SETTING OPTIONS CONT'

SETTING	OPTIONS	DESCRIPTION
Microphone	Off / On	Turning this setting off mutes the built in microphone. Default: On
Speaker Volume	Off Low Medium High	To adjust the speaker volume of the inbuilt speaker. Default: High
Keypad Sound	On / Off	Mutes Key button beeps. Default: On
Power ON / OFF Sound	ON / OFF	To mute the Power On/ OFF sound. Default : ON
G- Sensor	OFF / 10%, 20%, 30%, 40%, 50%, 60%, 70%, 80%, 90%	High Percentage increases the sensitivity Default: 50%

VIDEO SETTING OPTIONS CONT'

SETTING	OPTIONS	DESCRIPTION
Park Mode	<p>Please confirm if Hardwire Kit is connected / Not Connected.</p> <p>Option: Dashmate DSH-HWK</p> <p>Please visit www.dashmate.com.au or www.dashmate.co.nz for more information</p>	<p>Press Connected or Un connected depending if the Hardwire kit is connected.</p> <p>Hardwire kit is not connected:</p> <p>If a Hardwire kit is not connected, the Dash Cam will record up to 10 incidents in 24 hours provided it is fully charged.</p> <p><i>Note: In Park Mode, the Dash Cam will only record the impact incidents.</i></p> <p>Hardwire kit is connected:</p> <p>If a Hardwire kit is connected, a number of functions become available: Off, Time Lapse, Motion Sensor, G-Sensor Detection.</p> <p><i>Note: In parkmode the DVR will be continuously recording.</i></p> <p>Time Lapse:</p> <p>Time Lapse recording is a technique where the frequency at which file frames are captured (frame rate) is lower than that used when playing back the recording.</p> <p>Motion & G Sensor Detection Mode:</p> <p>The Dash Cam will lock files if there is any motion or impact detected.</p>

VIDEO SETTING OPTIONS CONT'

SETTING	OPTIONS	DESCRIPTION
Alert	Speed Camera School Zone Black Spot Redlight Camera Railway Crossing	To turn On / Off selected alerts. <i>* Here Maps does not support School Zone & Accident Blackspot Alerts for New Zealand.</i> Default: All alerts are On
Alert Distance	100 / 200 / 300 / 400 / 500 Metres	Distance from where alerts will start working. Default: 300 M
School Zone Alert Time	AM 00:00 - 00:00 PM 00:00 - 00:00	School zone alerts will only work in the selected time period.
ADAS	ADAS Master - Turn ON/OFF all ADAS Features FVSA - Forward Vehicle stationary Alert FCWS - Forward Collision Warning System LDWS - Lane Departure Warning	FVSA - Provides alert if vehicle ahead is stationary for minimum 5 seconds and then start moving. FCWS - Minimum speed of the car on which DSH-1252 is installed should be 30 Kmh for this feature to be activated LDWS - Minimum speed of the car on which DSH-1252 is installed should be 50 Kmh for this feature to be activated

VIDEO SETTING OPTIONS CONT'

SETTING	OPTIONS	DESCRIPTION
Alert Type	Video + Audio Audio	Speed camera alert will change to Audio + Video or Audio only.
ADAS Setting LDWS Sensitivity LDWS Speed FCWS Sensitivity FCWS Speed	Sensitivity Options High / Medium / Low Speed 50Kmh / 60Kmh / 70Kmh	Sensitivity Default: High Speed 50 Kmh

14.2 GENERAL SETTING OPTIONS

SETTING	OPTIONS	DESCRIPTION
Language	Select Language	Select Menu Language. Default: English
Date/Time	Input Date/time	Input DD/MM/YYYY Touch section and use UP/DOWN arrows to get to desired value. Touch Back Key to save and return to previous menu.

GENERAL SETTING OPTIONS CONT'

SETTING	OPTIONS	DESCRIPTION
Auto LCD OFF	Off / 1 / 3 / 5 Minutes	Determines the amount of time before the display screen turns off. (DSH-1252 will keep on recording even if the display is Off). Default: 1 Min
Speed Unit	KM/H MPH	Speed Unit determines the metric used when the Dash Cam is calculating speed. Default: KM/H
Format Alert	OFF / 15 Days / 30 Days / 60 Days	Sets a reminder to format your Micro SD card in case of excess locked footage files or if the Micro SD card is corrupted Default : 30 Days
Satellite Info	N/A	Shows the number of satellites latched on to the internal GPS.
Licence Plate	Input Licence Plate	Input your car Licence plate which will be watermarked on the recorded footage. Use the Up and Down Keys to change input. Touch and scroll up and down to input your licence plate number.

GENERAL SETTING OPTIONS CONT'

SETTING	OPTIONS	DESCRIPTION
Storage	Displays the storage space on the Micro SD card in different default folders.	Displays the storage space on the Micro SD card.
Format	Cancel / Ok	Format the inserted Micro SD card, deleting all photos, videos and date.
Factory Reset	Cancel / Ok	Restore Factory Settings.
WIFI	OFF / 2.4G / 5G	To turn ON/OFF inbuilt Dash camera's WIFI and chose between 2.4G and 5G Bands. 5G Band speed is faster than 2.4G Default: OFF WIFI Can also be turned ON/ OFF by pressing the hard key on the Dash Cam as explained on page 8.
Version	N/A	Displays the installed firmware version.

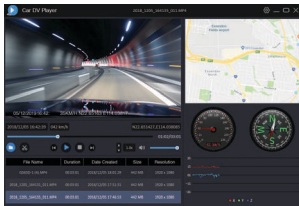
15.0 SOFTWARE PLAYBACK

The Inbuilt GPS unit will record your vehicle speed and GPS location for playback alongside your footage when viewed on a computer.

To play back the GPS footage, Please download the player from www.dashmate.com.au/dsh-1252 and run it on your windows device.

To view images from your Dash Camera, you will need to remove the Micro SD Card and transfer the files to your computer using a Micro SD Card Slot or compatible USB adapter.

Once the files have been transferred to your computer, please select the folder and select the file you wish to view or playback.



16.0 INSTALLING THE APP ON YOUR SMART PHONE

Please download the DSH-1252 App from the Google Play Store or Apple App Store depending on your mobile device.

After successfully downloading and installing the app on your mobile device, search for DSH-1252-XXXX (the last 4 digits are unique to each dash camera) WIFI connection and connect it on your mobile device by entering password "12345678".

Open the app and sync it with the Dash Cam, this allow you to access your videos and app settings.

17.0 WARRANTY TERMS & CONDITIONS

Our goods come with guarantees that cannot be excluded under the Australian & New Zealand Consumer Law. You are entitled to a replacement or refund for a major failure and for compensation for any other reasonably foreseeable loss or damage. You are also entitled to have the goods repaired or replaced if the goods fail to be of acceptable quality and the failure does not amount to a major failure.

This warranty is provided in addition to your rights under the Australian & New Zealand Consumer Law.

Directed Electronics Australia Pty Ltd (Directed Electronics) warrants that this product is free from defects in material and workmanship for a period of 12 months from the date of purchase or for the period stated on the packaging. This warranty is only valid where you have used the product in accordance with any recommendations or instructions provided by Directed Electronics.

This warranty excludes defects resulting from alterations of the product, accident, misuse, abuse or neglect.

In order to claim the warranty, you must return the product to the retailer from which it was purchased or if that retailer is part of a National network, a store within that chain, along with satisfactory proof of purchase. The retailer will then return the goods to Directed Electronics. Directed Electronics will repair, replace or refurbish the product at its discretion. The retailer will contact you when the product is ready for collection. All costs involved in claiming this warranty, including the cost of the retailer sending the product to Directed Electronics, will be borne by you.

Email: service@dashmate.com.au

INDEMNITY

YOU AGREE TO DEFEND, INDEMNIFY AND HOLD HARMLESS DASHMATE AND ITS SUBSIDIARIES AND AFFILIATES FROM AND AGAINST ANY AND ALL CLAIMS, PROCEEDINGS, INJURIES, LIABILITIES, LOSSES, COSTS AND EXPENSES (INCLUDING REASONABLE LEGAL FEES), INCLUDING BUT NOT LIMITED TO, CLAIMS ALLEGING NEGLIGENCE, INVASION OF PRIVACY, COPYRIGHT INFRINGEMENT AND/OR TRADEMARK INFRINGEMENT AGAINST DASHMATE AND ITS SUBSIDIARIES AND AFFILIATES OR THE DASHMATE SERVICES, RELATING TO OR ARISING OUT OF YOUR BREACH OF ANY PROVISION OF THESE TERMS, YOUR MISUSE OF THE DASHMATE OR DASHMATE SERVICES, OR YOUR UNAUTHORIZED MODIFICATION OR ALTERATION OF PRODUCTS OR SOFTWARE.

WARRANTY AND WARRANTY DISCLAIMER

DASHMATE HAS A LIMITED WARRANTY ON WHEREBY DASHMATE WARRANTS TO YOU AND ONLY TO YOU THAT THE DASHMATE VEHICLE DASH CAMERAS, MIRROR DASH CAMERAS, FRONT, REAR AND REVERSING CAMERAS AND MIRROR MONITOR DEVICES WILL BE FREE FROM DEFECTS IN MATERIALS AND WORKMANSHIP FOR ONE (1) YEAR FROM THE DATE OF YOUR PURCHASE OF THE ON DASHMATE VEHICLE DASH CAMERAS, MIRROR DASH CAMERAS, FRONT, REAR AND REVERSING CAMERAS AND MIRROR MONITOR DEVICES (UNLESS A LONGER WARRANTY PERIOD IS REQUIRED BY LAW).

THE SPECIFICS OF THIS DASHMATE LIMITED WARRANTY ARE AT
[HTTPS://WWW.DASHMATE.COM.AU/WARRANTY](https://www.dashmate.com.au/warranty)

TO THE EXTENT POSSIBLE UNDER GOVERNING LAW, OTHER THAN THE ABOVE PRODUCT WARRANTY FOR THE DASHMATE VEHICLE DASH CAMERAS, MIRROR DASH CAMERAS, FRONT, REAR AND REVERSING CAMERAS AND MIRROR MONITOR DEVICES, YOU UNDERSTAND AND AGREE THAT THE DASHMATE SERVICES ARE PROVIDED ON AN "AS IS" AND "AS AVAILABLE" BASIS. DASHMATE MAKES NO WARRANTY THAT THE DASHMATE SERVICES WILL MEET YOUR REQUIREMENTS OR THAT USE OF THE DASHMATE SERVICES WILL BE UNINTERRUPTED, TIMELY, SECURE OR ERROR-FREE NOR DOES DASHMATE MAKE ANY WARRANTY AS TO THE ACCURACY OR RELIABILITY OF ANY INFORMATION OBTAINED THROUGH THE DASHMATE SERVICES (INCLUDING THIRD PARTY CONTENT), THAT ANY DEFECTS IN THE DASHMATE SERVICES WILL BE CORRECTED OR THAT THE DASHMATE PRODUCTS OR DASHMATE SERVICES WILL BE COMPATIBLE WITH ANY OTHER SPECIFIC HARDWARE OR SERVICE. FURTHER, DASHMATE DOES NOT WARRANT THAT THE DASHMATE SERVICES OR THE DASHMATE SERVERS THAT PROVIDE YOU WITH DATA AND CONTENT ARE FREE OF VIRUSES OR OTHER HARMFUL COMPONENTS. DASHMATE ALSO ASSUMES NO RESPONSIBILITY FOR AND SHALL NOT BE LIABLE FOR ANY DAMAGES CAUSED BY VIRUSES THAT MAY INFECT YOUR DASHMATE VEHICLE DASH CAMERAS, MIRROR DASH CAMERAS, FRONT, REAR AND REVERSING CAMERAS AND MIRROR MONITOR DEVICES, COMPUTER SOFTWARE, OR OTHER HARDWARE.

YOU AGREE THAT DASHMATE IS NOT AN INSURER AND THAT DASHMATE IS NOT PROVIDING ME WITH INSURANCE OF ANY TYPE. ANY AMOUNTS THAT YOU

PAY DASHMATE FOR THE DASHMATE SERVICE ARE NOT INSURANCE PREMIUMS AND ARE NOT RELATED TO THE VALUE OF YOUR VEHICLE OR PROPERTY, ANYONE ELSE'S PROPERTY LOCATED IN YOUR VEHICLE OR PREMISES, OR ANY RISK OF LOSS IN YOUR VEHICLE OR AT YOUR PREMISES. IF YOU WANT INSURANCE TO PROTECT AGAINST ANY RISK OF LOSS AT YOUR VEHICLE OR PREMISES, YOU WILL PURCHASE IT. IN THE EVENT OF ANY LOSS, DAMAGE OR INJURY, YOU WILL NOT LOOK TO DASHMATE TO COMPENSATE YOU OR ANYONE ELSE. YOU RELEASE AND WAIVE FOR YOURSELF AND YOUR INSURER ALL SUBROGATION AND OTHER RIGHTS TO RECOVER AGAINST DASHMATE ARISING AS A RESULT OF THE PAYMENT OF ANY CLAIM FOR LOSS, DAMAGE OR INJURY.

DASHMATE'S EQUIPMENT AND SERVICES DO NOT CAUSE AND CANNOT ELIMINATE OCCURRENCES OF CERTAIN EVENTS, INCLUDING, BUT NOT LIMITED TO, FIRES, FLOODS, BURGLARIES, ROBBERIES AND MEDICAL PROBLEMS. DASHMATE MAKES NO GUARANTEE OR WARRANTY, INCLUDING ANY IMPLIED WARRANTY OF MERCHANTABILITY OR FITNESS FOR A PARTICULAR PURPOSE, THAT THE DASHMATE EQUIPMENT AND SERVICES PROVIDED WILL DETECT OR AVERT SUCH INCIDENTS OR THEIR CONSEQUENCES. DASHMATE DOES NOT UNDERTAKE ANY RISK THAT YOU OR YOUR VEHICLE OR PROPERTY, OR THE PERSON OR PROPERTY OF OTHERS, MAY BE SUBJECT TO INJURY OR LOSS IF SUCH AN EVENT OCCURS. THE ALLOCATION OF SUCH RISK REMAINS WITH YOU, NOT DASHMATE.

OTHER THAN THE ABOVE PRODUCT WARRANTY FOR THE DASHMATE VEHICLE DASH CAMERAS, MIRROR

DASH CAMERAS, FRONT, REAR AND REVERSING CAMERAS AND MIRROR MONITOR DEVICES, DASHMATE AND ITS SUPPLIERS DISCLAIM ALL WARRANTIES OF ANY KIND, WHETHER EXPRESS, IMPLIED, OR STATUTORY, REGARDING THE DASHMATE EQUIPMENT AND ANY ASSOCIATED APP/SERVICE. INCLUDING ANY IMPLIED WARRANTY OF TITLE, MERCHANTABILITY, FITNESS FOR A PARTICULAR PURPOSE, OR NONINFRINGEMENT OF THIRD PARTY RIGHTS. BECAUSE SOME JURISDICTIONS DO NOT PERMIT THE EXCLUSION OF IMPLIED WARRANTIES, THE LAST SENTENCE OF THIS SECTION MAY NOT APPLY TO YOU. DASHMATE HEREBY FURTHER EXPRESSLY DISCLAIMS ALL LIABILITY FOR ANY CLAIMS FOR SERVICE FAILURES THAT ARE DUE TO NORMAL PRODUCT WEAR, PRODUCT MISUSE, ABUSE, PRODUCT MODIFICATION, IMPROPER PRODUCT SELECTION OR YOUR NON-COMPLIANCE WITH ANY AND ALL APPLICABLE FEDERAL, STATE OR LOCAL LAWS. THIS WARRANTY AND WARRANTY DISCLAIMER GIVE YOU SPECIFIC LEGAL RIGHTS, AND YOU MAY HAVE OTHER RIGHTS THAT VARY BY STATE, PROVINCE, OR COUNTRY. OTHER THAN AS PERMITTED BY LAW, DASHMATE DOES NOT EXCLUDE, LIMIT OR SUSPEND OTHER RIGHTS YOU HAVE, INCLUDING THOSE THAT MAY ARISE FROM THE NONCONFORMITY OF A SALES CONTRACT. FOR A FULL UNDERSTANDING OF YOUR RIGHTS YOU SHOULD CONSULT THE LAWS OF YOUR STATE, PROVINCE, OR COUNTRY. FOR OUR AUSTRALIAN CUSTOMERS: PLEASE NOTE THAT THIS WARRANTY IS IN ADDITION TO ANY STATUTORY RIGHTS IN AUSTRALIA IN RELATION TO YOUR GOODS WHICH, PURSUANT TO THE AUSTRALIAN CONSUMER LAW, CANNOT BE EXCLUDED.

LIMITATIONS OF DASHMATE LIABILITY

UNDER NO CIRCUMSTANCES WILL DASHMATE BE LIABLE IN ANY WAY FOR ANY CONTENT, INCLUDING, BUT NOT LIMITED TO, THE LOSS OF CONTENT, ANY ERRORS OR OMISSIONS IN ANY CONTENT, OR ANY LOSS OR DAMAGE OF ANY KIND INCURRED IN CONNECTION WITH USE OF OR EXPOSURE TO ANY CONTENT POSTED, EMAILED, ACCESSED, TRANSMITTED, OR OTHERWISE MADE AVAILABLE VIA THE DASHMATE APP.

DASHMATE LIABILITY FOR DAMAGES, ESPECIALLY FOR BREACH OF DUTY OR OBLIGATION, DELAY IN PERFORMANCE, NON-PERFORMANCE, OR MALPERFORMANCE SHALL BE PRECLUDED, EXCEPT WHEN THESE ARE DUE TO NEGLIGENT BREACHES OF ANY SIGNIFICANT CONTRACTUAL DUTY OR OBLIGATION ON THE PART OF DASHMATE. ANY LIABILITY FOR NEGLIGENCE IS LIMITED TO DIRECT LOSSES USUALLY AND TYPICALLY FORESEEABLE IN SUCH CASE. SHOULD THE CLAIM FOR DAMAGES BE BASED ON WILFUL OR GROSSLY NEGLIGENT BREACH OF CONTRACTUAL DUTY OR OBLIGATION ON THE PART OF DASHMATE, THE PRECLUSION AND LIMITATION OF LIABILITY MENTIONED IN THE PRECEDING SENTENCES WILL NOT APPLY. THE PRECEDING PRECLUSION AND LIMITATION OF LIABILITY WILL ALSO NOT APPLY TO CLAIMS FOR DAMAGES ARISING OUT OF LOSS OF LIFE, BODILY INJURY OR HEALTH IMPACTS FOR WHICH DASHMATE MAY BE LIABLE, OR FOR NON-CONTRACTUAL LIABILITY.

SOME STATES AND COUNTRIES DO NOT ALLOW THE EXCLUSION OR LIMITATION OF INCIDENTAL OR CONSEQUENTIAL DAMAGES, SO THE ABOVE LIMITATION OR EXCLUSION MAY NOT APPLY TO YOU. ADDITIONALLY, THIS PROVISION IS NOT INTENDED TO LIMIT DASHMATE'S LIABILITY IN THE EVENT OF DASHMATE'S WILLFUL OR INTENTIONAL MISCONDUCT.



V1.0

TECHNOLOGY DRIVEN™



All Images, Information and Content are Copyright © 2021
Directed Electronics Australia Pty Ltd. All Rights Reserved.
www.dashmate.com.au | www.dashmate.co.nz

DIRECTED
AUSTRALIA & NZ

www.directed.com.au
www.directed.co.nz