

K: 43374267 | T: 69217425
Mother & Child Floor Lamp
SLR-23490

IMPORTANT SAFETY INSTRUCTIONS:

The following safety precautions should always be followed, to reduce the risk of electric shock, personal injury or fire. It is important to read all of these instructions carefully before using the product, and to save them for future reference or new users.

1. This product must only be used as intended in accordance with the enclosed operating instructions.
2. Do not carry the appliance by the mains cable.
3. The external flexible cable or cord of this luminaire cannot be replaced; If the cord is damaged, the luminaire shall be destroyed.
4. If the appliance stops unexpectedly or appears to malfunction, unplug the adaptor and stop using immediately. Seek professional advice to rectify the fault or make repairs.
5. Unplug the adaptor from the mains socket when not in use, before cleaning or changing accessories.
6. Avoid positioning the appliance where the power cable might be accidentally trapped or damaged.
7. Keep the appliance and cable away from sources of heat, sharp objects or anything that may cause damage.
8. Ensure the appliance is switched OFF before connecting the mains adaptor.
9. Be aware that some surfaces may become hot. Do not touch hot surfaces and supervise others accordingly.
10. This product has not been designed for use by children.
11. Children should be closely supervised at all times when they are near any electrical appliance.
12. To protect against electric shock, never allow the appliance, the mains cable or plug to come into contact with water or any other liquid.
13. Never reach for any appliance that has fallen into water. Unplug the adaptor at the mains immediately and unplug. Do not re-use until the product has been inspected and approved by a qualified electrician.
14. Always ensure that hands are dry before operating or adjusting any switch on the product and mains supply connections.
15. To disconnect, first ensure that all controls are in the OFF position, then remove the adaptor from the electricity supply.
16. The light source of this luminaire is not replaceable; when the light source reaches its end of life the whole luminaire shall be replaced.
17. Where relevant keep all ventilation slots, filters, etc. uncovered and clear of debris. Never drop or insert objects into the openings.
18. Do not use outdoors. This appliance has been designed for domestic indoors use only.

ADDITIONAL SAFETY PRECAUTIONS FOR LIGHTING:

1. Carefully read all instructions for the assembly and use of this before connection to electricity supply.
2. Light bulbs become very hot in seconds. Do not attempt to touch the bulb while the lamp is lit and supervise others accordingly.
3. Before cleaning, switch off the lamp and unplug from electricity supply. Allow the bulb to cool for at least 10 minutes, before touching it and making the change.
4. If in doubt, consult a qualified electrician.

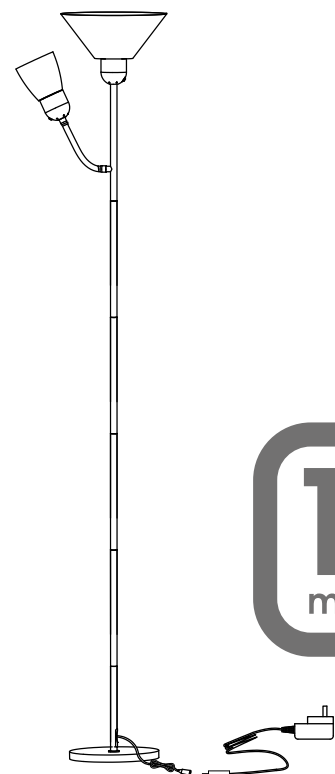
Product Specification (use provided adaptor only KL06-1200500AU):

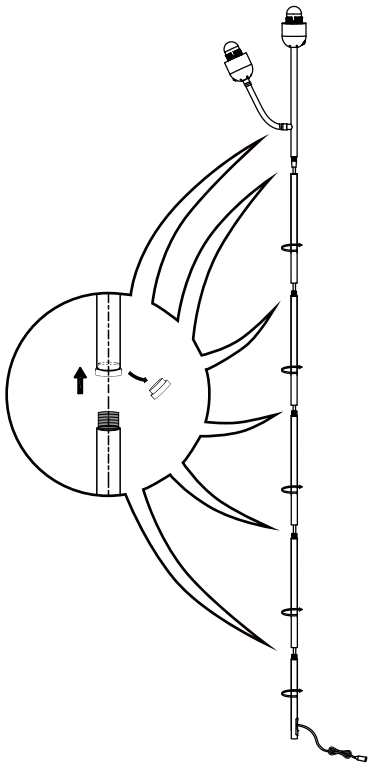
- INPUT: 100-240V~ 50/60 Hz Max.0.3A
- OUTPUT: 12V DC 500mA Max.6W
- Non replaceable LED 5W Max

When using the lamp to illuminate wall hangings, photos, ornaments, etc., the minimum distance from the light bulb and the object must be kept to at least 0.5 Meters.

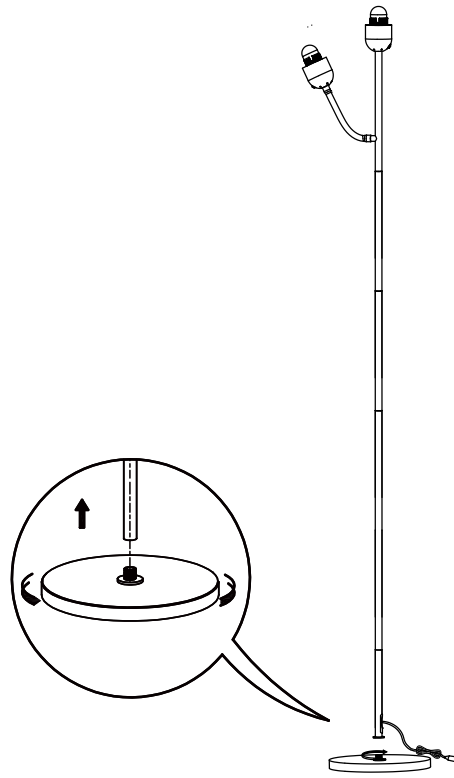
Installation Instructions:

1. Caution: Assemble the lamp completely before connecting to the electricity supply.
2. Remove the lamp tube cover and assemble them in order. (a)
3. Tighten the lamp tube onto the base screw. (b)
4. Assemble the shade on the lampholder. (c)
5. Plug in the power supply, and turn on the switch and check to ensure that all the components have been assembled correctly. (d)

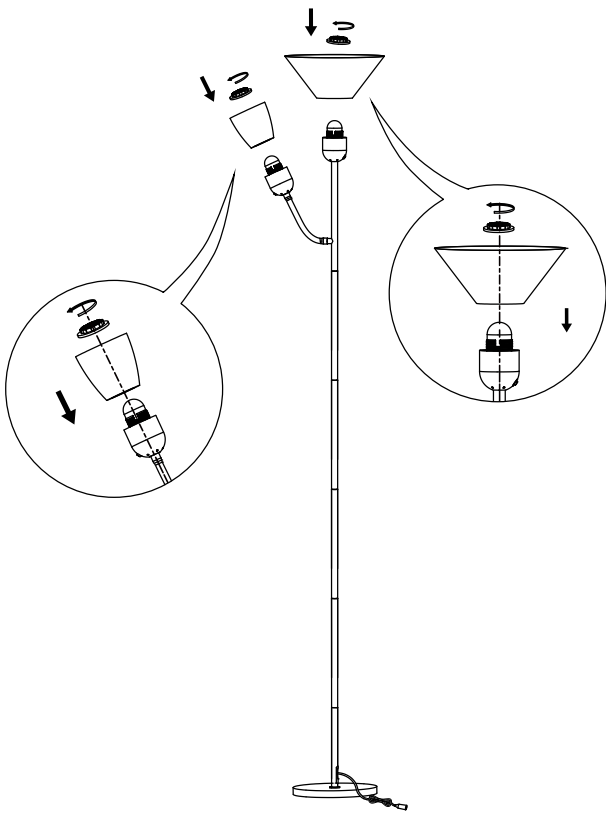




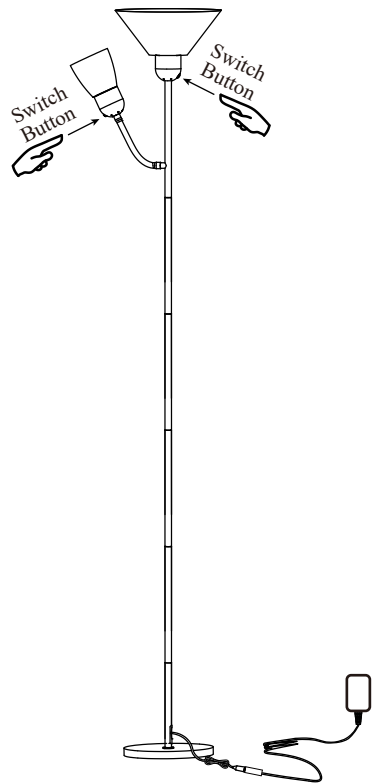
a



b



c



d

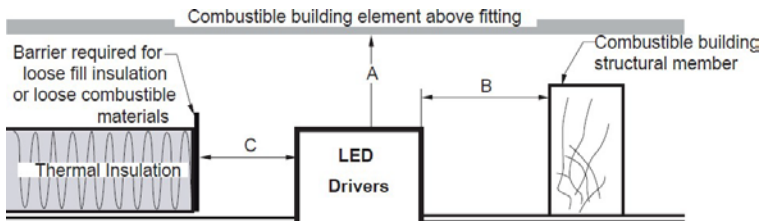
AC adaptor (Do Not Cover) warning

LED Driver (AC Adaptor) Manual

1. Do not open the cover of the equipment.
2. For use with LED lighting equipment.
3. The input and output voltage should be checked before use to ensure correct use.
4. This is the Class II product, only for indoor use.
5. The product is not a toy, keep it where children cannot reach.
6. The lamp control gear does not rely upon the luminaire enclosure for protection against accidental contact with live parts.
7. If applicable an indication that the control gear is suitable for operation with LED modules.
8. Do-not-cover classification



The power supply (LED Drive) that can be used where normally flammable materials including building insulation, are or may be present, but cannot be abutted against any material and cannot be covered in normal. Minimum clearance distance from the top and sides of the control gear to normally flammable building element is 30 mm; as shown in below picture, A=B=C=Min. 30 mm.



12 Month Warranty

Thank you for your purchase.

Your new product is warranted to be free from defects in materials and workmanship for the period stated above, from the date of purchase, provided that the product is used in accordance with accompanying recommendations or instructions where provided. This warranty is in addition to your rights under the Australian Consumer Law.

For New Zealand customers, this warranty is in addition to statutory rights observed under New Zealand legislation.

We will provide you with your choice of a refund, repair (where possible) or exchange (availability dependent) for this product if it becomes defective within the warranty period. The business will bear the reasonable expense of claiming the warranty.

This warranty will no longer apply where the defect is a result of alteration, accident, misuse, abuse or neglect.

Please retain your receipt as proof of purchase and contact our Customer Service Centre as listed below, for the entity you purchased this product from, for any difficulties with your product. Warranty claims and claims for expense incurred in returning this product can be addressed to the respective Customer Service Centre.

Our goods come with guarantees that cannot be excluded under the Australian Consumer Law. You are entitled to a replacement or refund for a major failure and compensation for any other reasonably foreseeable loss or damage. You are also entitled to have the goods repaired or replaced if the goods fail to be of acceptable quality and the failure does not amount to a major failure.

Contact for Kmart purchases	Contact for Target purchases
Kmart Australia Ltd. C/- Customer Service Centre 690 Springvale Road, Mulgrave Vic 3170 Customer Service: 1800 124 125 (Australia) or 0800 945 995 (New Zealand) or via Customer Help at kmart.com.au	Target Australia Pty Ltd C/- Customer Service Centre 2 Kendall Street, Williams Landing, Vic, 3027 Customer Service: 1300 753 567 or via Customer Help at target.com.au/help/contact-us