

# RACER E GO KART BF

Keycode: 43446704



## Owner's Manual and Assembly Instructions

**This manual contains important safety, assembly, operation and maintenance information, please read and study carefully.**

**The car must be assembled by an adult who has read and understood the instructions.**

**Save this manual for future reference.**



<https://youtu.be/C24TJH0W8xQ>



# TABLE OF CONTENTS

<b>1. Important</b>	<b>3</b>
<b>2. Safety</b>	<b>4</b>
<b>3. Parts List</b>	<b>6</b>
<b>4. Parts Images</b>	<b>7</b>
<b>5. Prepare for Installing</b>	<b>8</b>
<b>6. Installing Front Wheels</b>	<b>9</b>
<b>7. Installing Rear Wheels</b>	<b>10</b>
<b>8. Assemble Steering Shaft</b>	<b>11</b>
<b>9. Attach Front Hood</b>	<b>13</b>
<b>10. Installing Steering wheel</b>	<b>16</b>
<b>11. Installing Rear Tail</b>	<b>17</b>
<b>12. Connect The Battery</b>	<b>18</b>
<b>13. Adjusting The Length of Car</b>	<b>20</b>
<b>14. Steering Wheel Function</b>	<b>21</b>
<b>15. Operating Instructions</b>	<b>22</b>
<b>16. Battery Maintenance</b>	<b>23</b>
<b>17. General Care</b>	<b>24</b>

# **IMPORTANT:**

**YOU MUST CHARGE THE BATTERY FOR 10 HOURS BEFORE FIRST USE!**

- ★ **Charge the battery after each use.**
- ★ **Charge the battery at least once a month, even if the car was not in use.**
- ★ **Do not charge for more than 12 hours.**
- ★ **Failure to charge the battery once a month may result in a battery that will not accept a charge.**

## **WARNING:**

**CHOKING HAZARD: Small parts. Not for children**

- ★ **under 3 years. Keep small children away when assembling.**
- ★ **To reduce the risk of injury, adult supervision is required.**
- ★ **The user must be 6+ years, max load is 50kg(110lbs)**

**Read this entire manual to ensure proper assembly and safe operation of the car.**

# **SAFETY WARNING**

- ★**The user must follow all safety rules and guidelines, or serious injury or death may occur to the user.**
- ★**Always use common sense and safe practices when using the car.**
- ★**This product contains small parts that are for adult assembly only. Keep small children away when assembling. Remove and dispose of all protective material and plastic bags before assembling.**
- ★**Riders must always wear a fitted helmet that complies with local laws and regulations.**
- ★**Only sit on the seat in the car.**
- ★**Do not allow more than one rider.**
- ★**Do not overload the car.**
- ★**Do not pull the car with another vehicle or similar device.**
- ★**Keep body parts such as hands, legs, hair and clothing away from moving parts. Moving parts can cause serious injury.**
- ★**Always wear shoes while in the car.**
- ★**Do not operate near streets or motor vehicles.**
- ★**Do not operate near drop-offs such as steps, steep inclines or hills. Operate on relatively level ground.**
- ★**Do not operate near water, swimming pools or bodies of water.**
- ★**Do not operate in dangerous weather conditions such as rain or snow.**
- ★**Do not operate near loose dirt, mud, sand or fine gravel.**
- ★**Do not operate near flammable vapors (gasoline, paint thinner, acetone, etc.).**
- ★**Always operate the car in a safe, secure environment with adult supervision.**

# **WARNING: BATTERY SAFETY**

- ★ **Battery posts, terminals and related accessories contain lead and lead components.**
- ★ **DO NOT open the battery.**
- ★ **Contact exposure to battery leakage (lead acid) may cause serious injury.**
- ★ **Immediately contact your doctor if exposure occurs. If the chemical is on the skin, flush immediately with cool water for 15 minutes. If the chemical is swallowed immediately give the person water or milk. Do not give water or milk if the person is vomiting or has decreased alertness. Do not induce vomiting.**
- ★ **Tampering or modifying the electric circuit system may cause shock, fire or explosion. It could permanently damage the system. Keep the charger housing closed to prevent exposed wiring, which may cause electric shock.**

**IMPORTANT: Before using the car for the first time, the battery must be charged for a full 10 hours (no more than 12 hours).**

## **WARNING: ADULT SUPERVISION REQUIRED**

- ★ **Before using the car, the rider must understand the car controls and safety issues.**
- ★ **It is the responsibility of the adult to educate the child and determine if the child is capable of understanding the car controls.**
- ★ **An adult must ALWAYS directly supervise the use of this car.**
- ★ **NEVER leave a child unsupervised in the car.**

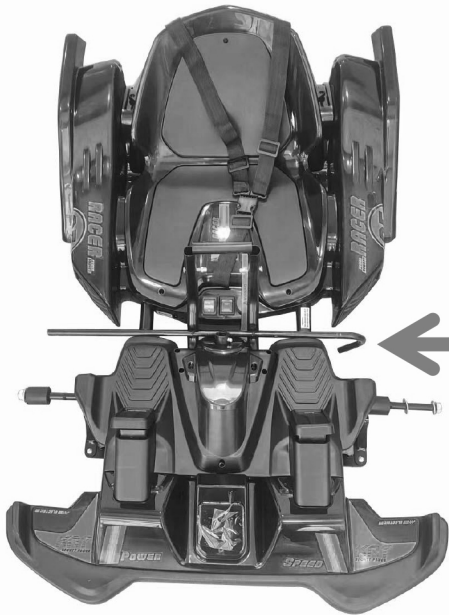
# Parts List

**Note: Please check parts list first**

<b>#</b>	<b>Description</b>	<b>Quantity</b>
<b>1</b>	<b>Car body</b>	<b>1</b>
<b>2</b>	<b>Rear tail</b>	<b>1</b>
<b>3</b>	<b>Steering wheel</b>	<b>1</b>
<b>4</b>	<b>Rear wheel</b>	<b>2</b>
<b>5</b>	<b>Front wheel</b>	<b>2</b>
<b>6</b>	<b>Front hood</b>	<b>1</b>
<b>7</b>	<b>Steering shaft</b>	<b>1</b>
<b>8</b>	<b>Wheel cap</b>	<b>4</b>
<b>9</b>	<b>Decal of front hood</b>	<b>1</b>
<b>10</b>	<b>Screw for front hood</b>	<b>1</b>
<b>11</b>	<b>Socket spanner</b>	<b>1</b>
<b>12</b>	<b>Open spanner</b>	<b>1</b>
<b>13</b>	<b>Instruction Manual</b>	<b>1</b>

# Parts Images

**Note: Please check all parts first**



**Car body**

**Steering shaft**



**Rear tail**



**Front hood**



**Steering wheel**



**Front wheel**



**Rear wheel**



**Wheel cap**



**Decal for front hood**



**Charger**



**Screw for front hood**



**Socket spanner**

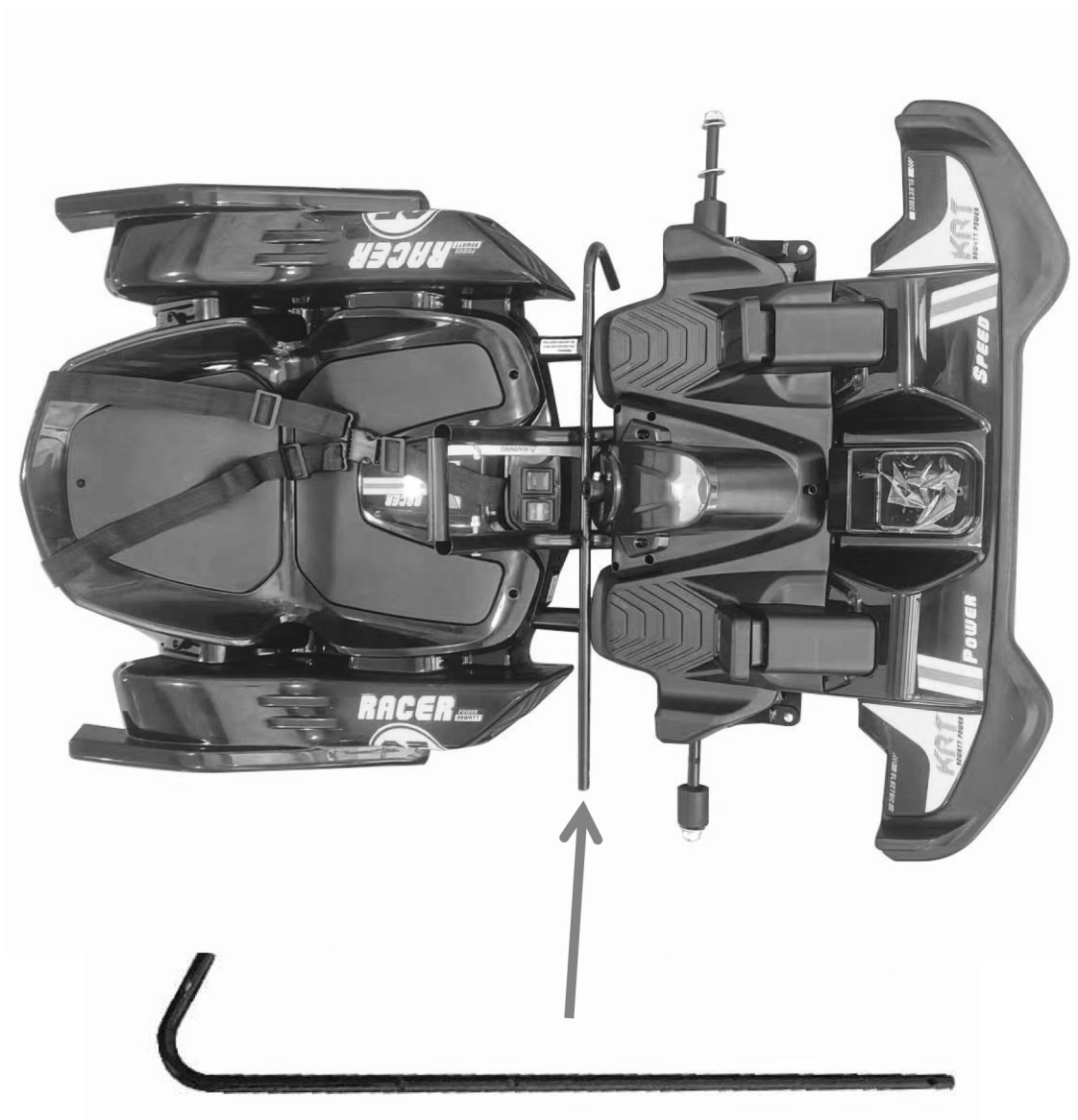


**Open spanner**



**Instruction Manual**

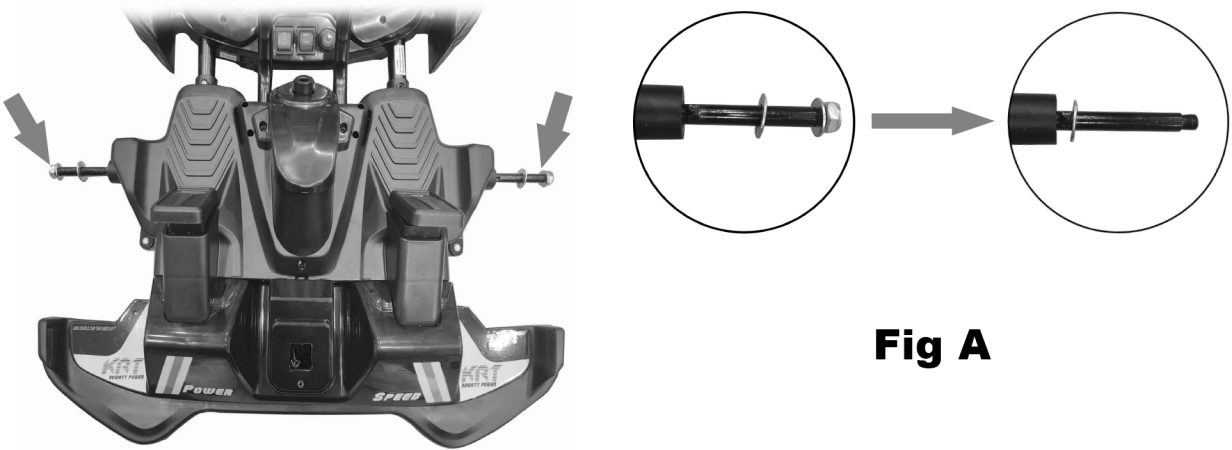
# Prepare for Installing



**Note: Remove the steering shaft before start installing.**

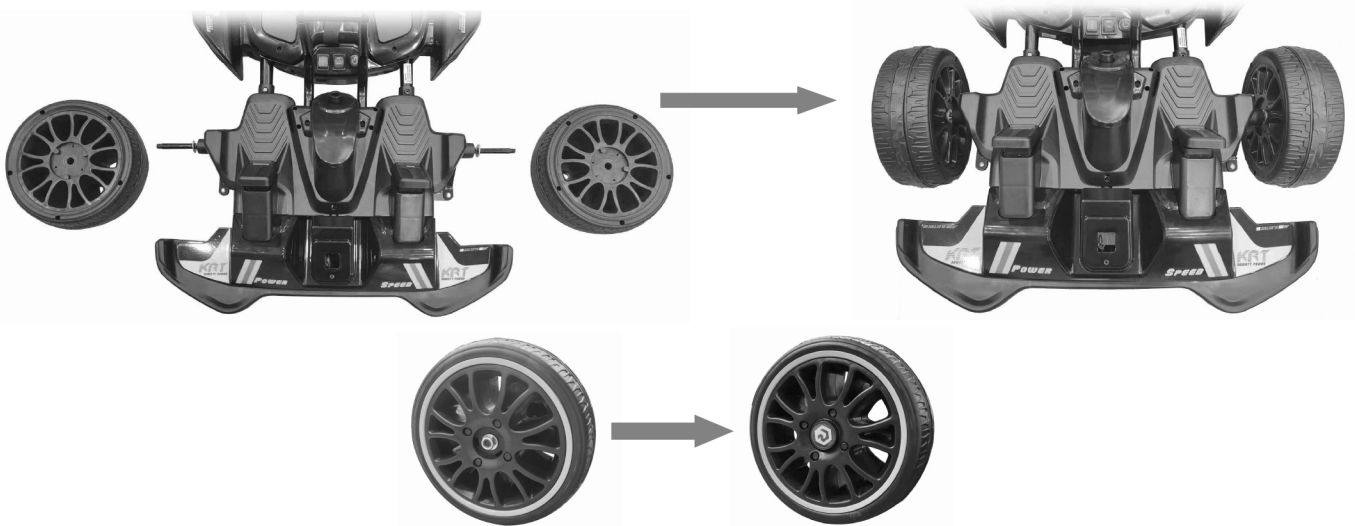


# Installing Front Wheels



**Fig A**

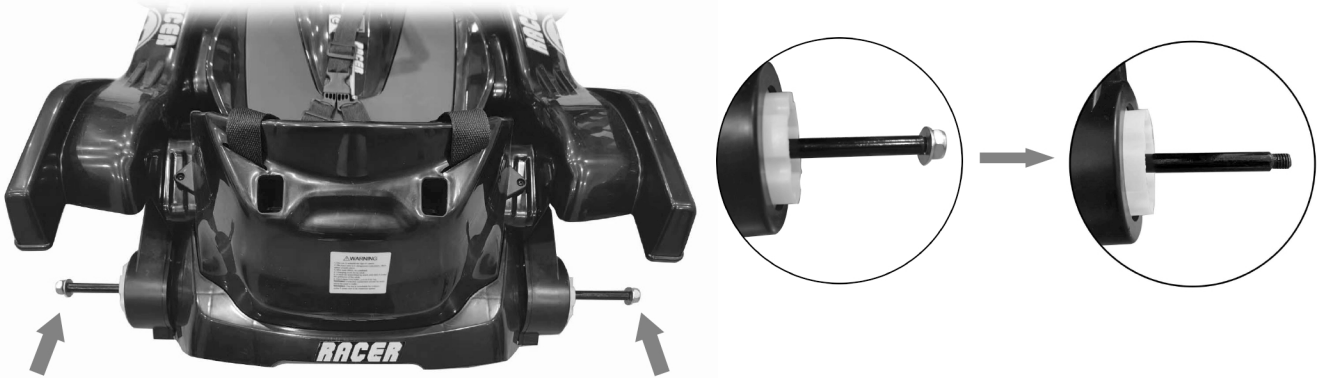
- 1. Remove the washer and nut both ends of axle with socket spanner (12) as Fig A.**



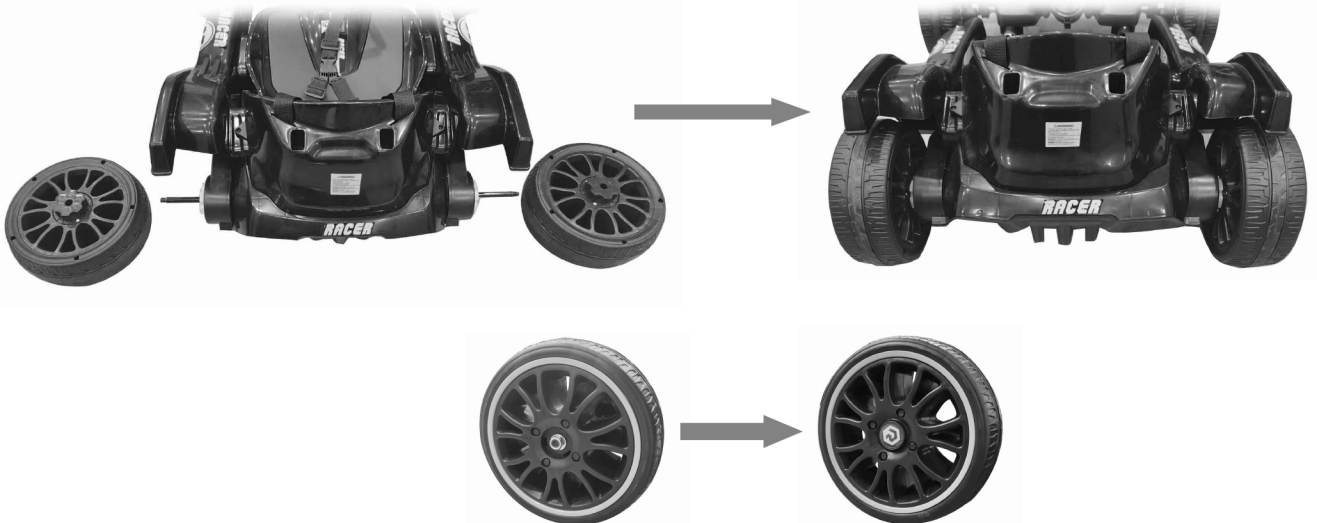
- 2. Insert the front wheels (5) to both ends of axle.**
- 3. Fix the washer and nut which disassembled at step 1.**
- 4. Snap the wheel caps (8) of two sides**  
**Note: Must align the three holes on wheel and cap.**

**WARNING: The nut must be tightened.**

# Installing Rear



1. Remove the washer and nut both ends of axle with socket spanner(11).



2. Insert the rear wheels (4) to both sides of axle.
3. Fix the washer and nut which disassembled at step 1.
4. Snap the wheel caps (8) of two sides.  
Note: Must align the three holes on wheel and cap.

**WARNING: The nut must be tightened.**

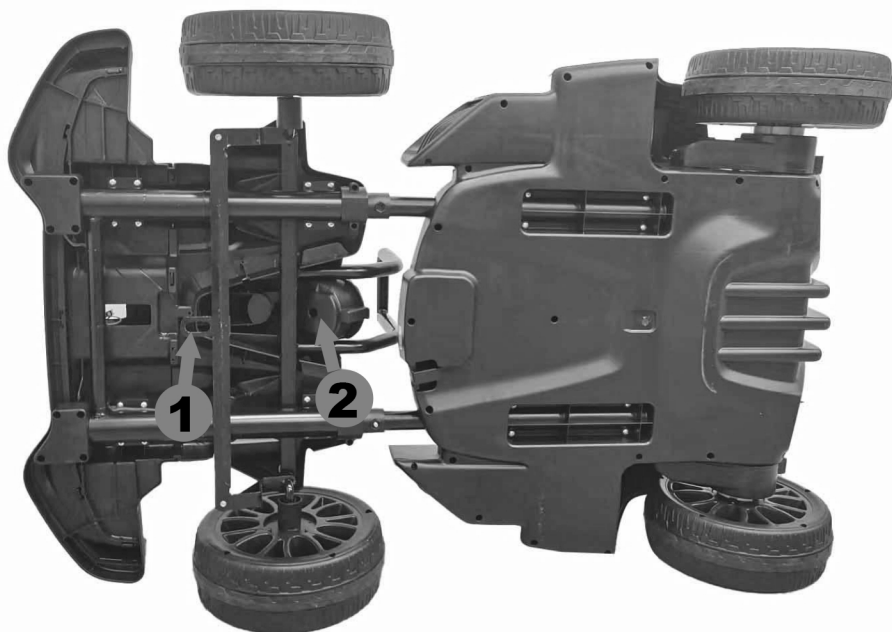
# Assemble Steering Shaft (1)



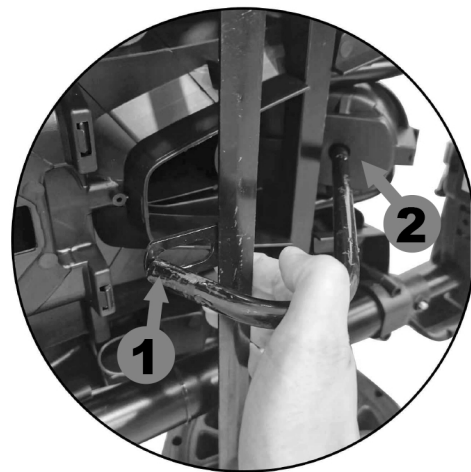
**Fig A**

## **WARNING:**

**CHOKING HAZARD: Small parts. Not for children under 3 years. Keep small children away when assembling.**



**Fig B**

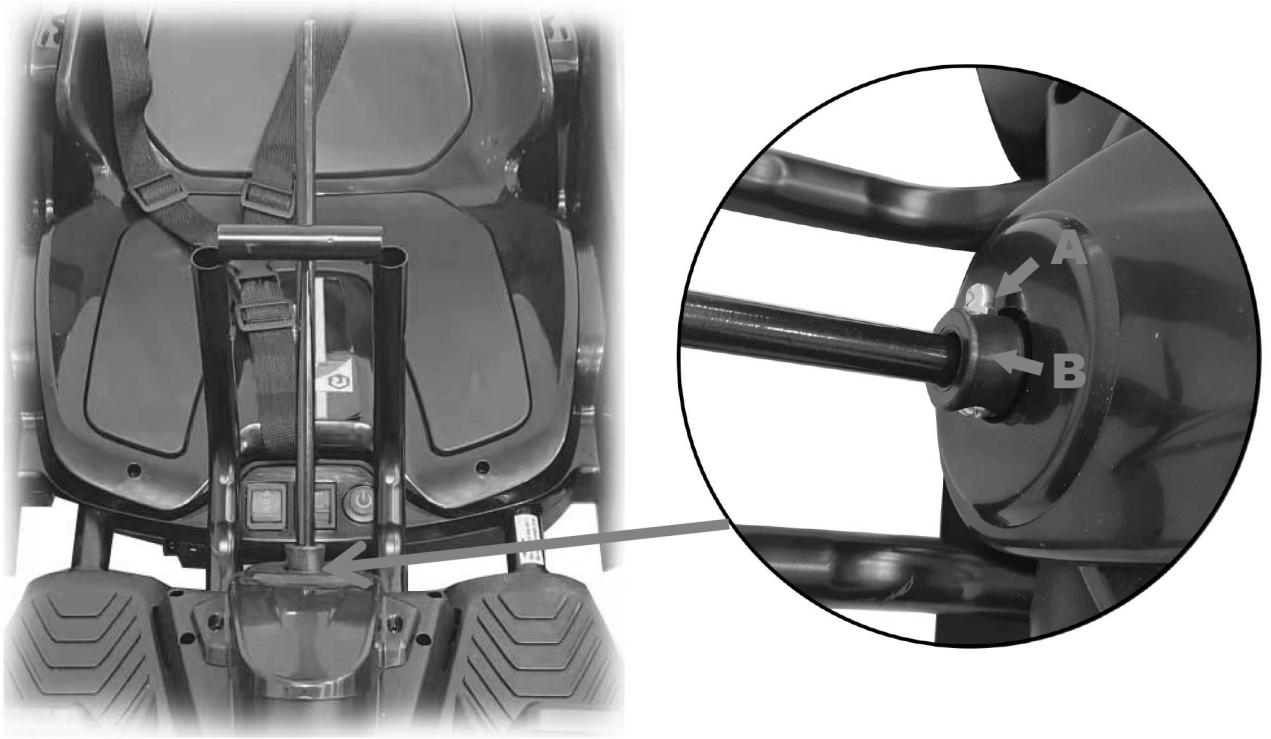


**Fig C**

1. Remove the screws and nuts with socket spanner as Fig A.
2. Put the car sideways as Fig B.
3. Insert the steering shaft (7) as Fig C.

**WARNING: Be sure the end hook of shaft fits inside the loop 1 .**

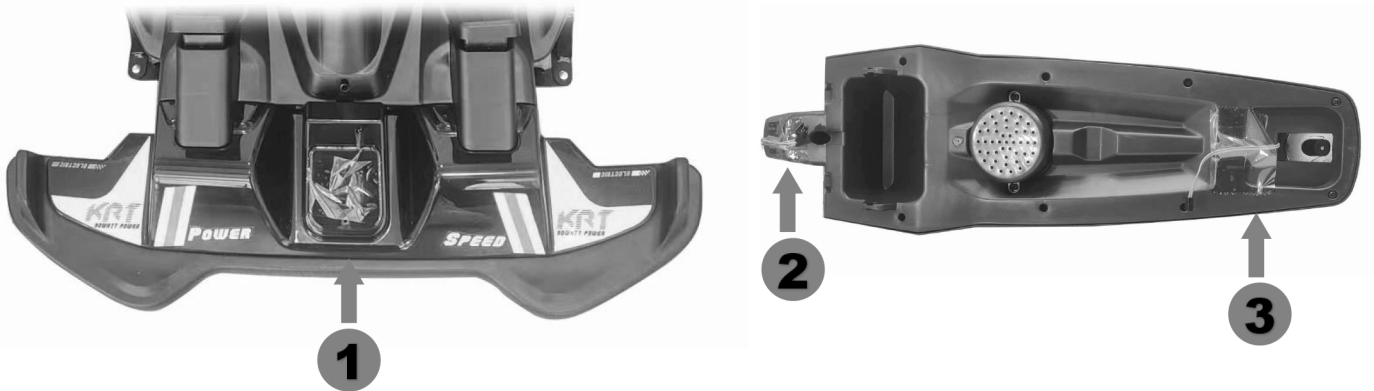
# Assemble Steering Shaft (2)



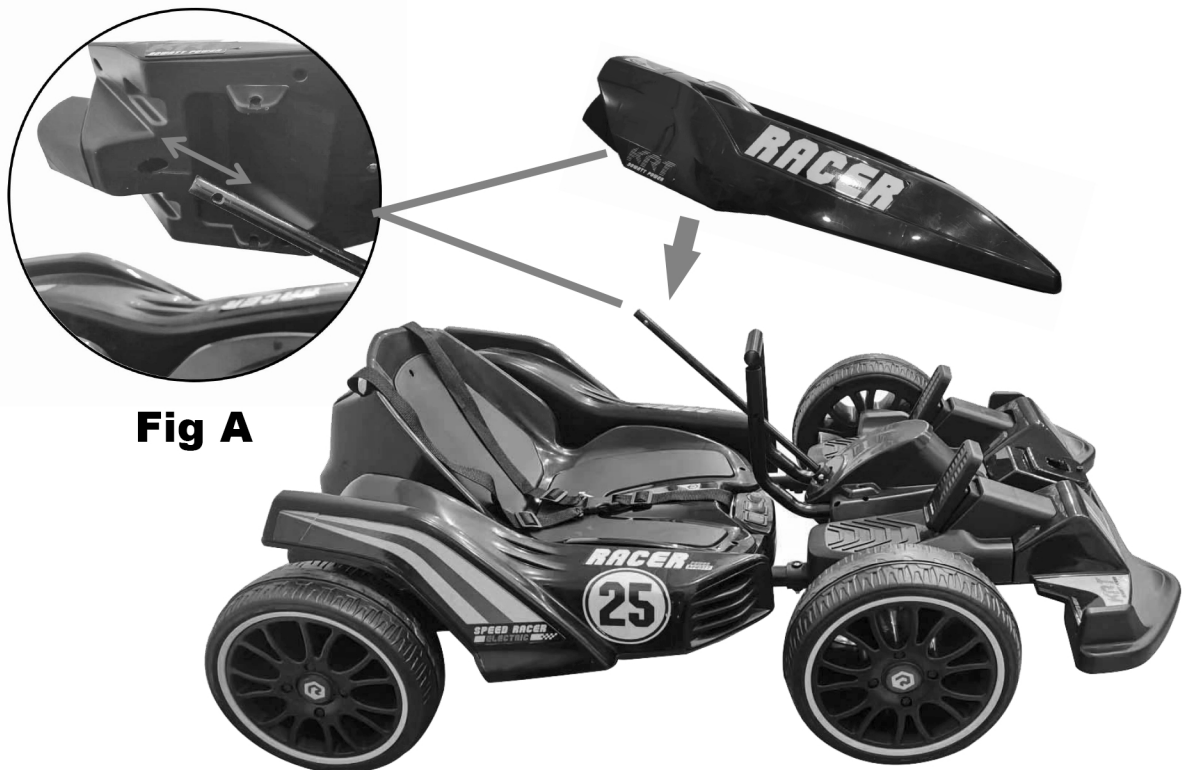
4. Rotate part B (the black plastic) to align the hole of shaft.
  5. Fix the screw and nut (Part A) which were disassembled at step 1, and tighten them with socket spanner (11).
- Note:** You only need to fix the screw and nut for this one part.

**WARNING:** The screw and nut must be tightened well.

# Attach Front Hood (1)

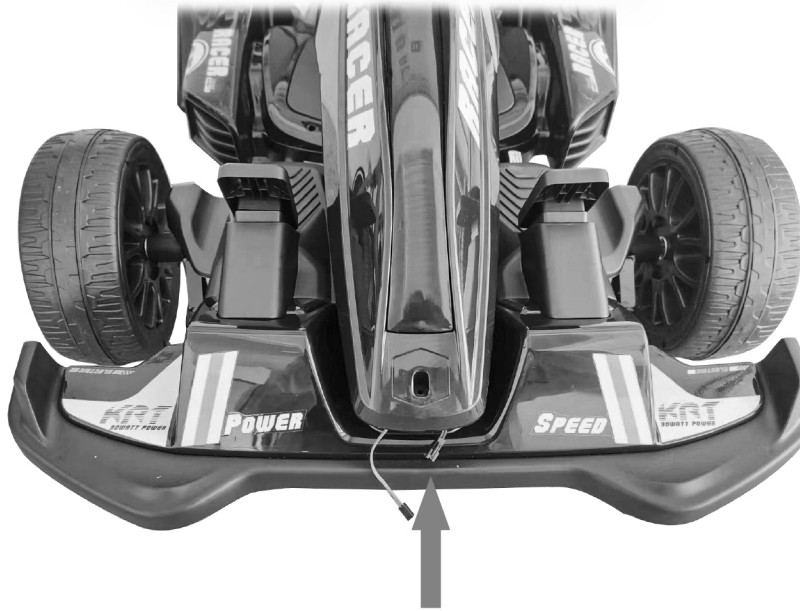


1. Remove the tape of part **1** **2** **3** .



2. Place the front hood (6) into the end of steering shaft (7) as Fig A.

# Attach Front Hood (2)



1



2



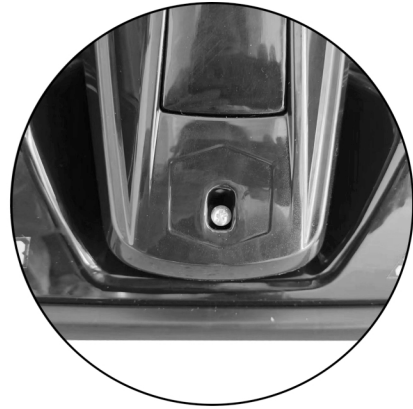
3

1. Align the plugs as **1**.
2. Connect the plugs as **2**.
3. Insert the whole wire into the hole as **3**, otherwise it will effect the hood assembly .

# Attach Front Hood (3)



**Fig A**



**Fig B**



**Fig C**

- 1. Fix the two sides of scrow and nut which were disassembled from page 11 with spanners (11) (12) as Fig A.**
- 2. Tighten the screw (10) in the end of front hood with socket spanner as Fig B.**
- 3. Stick the decal (9) of front hood as Fig C.**

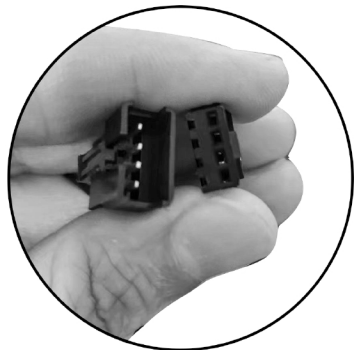
**WARNING: Tighten the screws and nuts for Fig A.**

**WARNING: Do not tighten screws too tight for Fig B.**

# Installing Steering Wheel



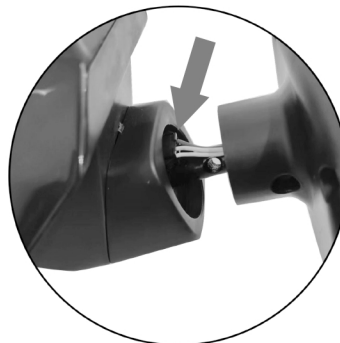
**Note: Remove the screw and nut with socket spanner first (11).**



**Fig A**



**Fig B**



**Fig C**



**Fig D**

- 1. Align the plugs between front hood and steering wheel as Fig A.**
- 2. Connect the plugs as Fig B.**
- 3. Insert the wire to the hole of hood as Fig C.**
- 4. Seat the steering wheel in the shaft, align the holes, tighten the screw and nut which were disassembled from steering wheel as Fig D.**



# Installing Rear Tail



## Correct assemble

- 1. Align the rear tail (2) with the back hole of body as shown.**
- 2. Insert the rear tail correctly.**
- 3. Make sure the rear tail can't be pulled out from the holes.**

**Note: Well done, you have finished the installation.**

# Connect The Battery (1)

**THIS IS VERY IMPORTANT BEFORE CONNECTING THE PLUG CORD, PLEASE CHECK AND CONFIRM STRICTLY AS BELOW INDICATION.**



**Fig A**



**Fig B (✓)**



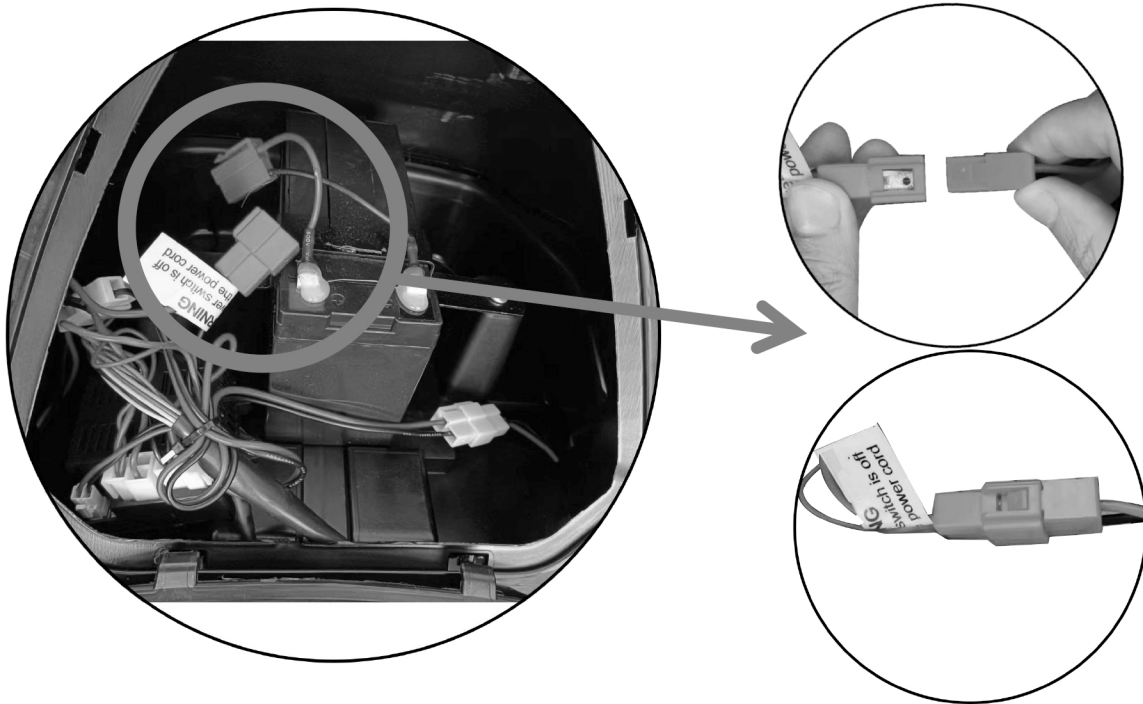
**Fig C (✗)**

- 1. Remove the label and power cover as Fig A.**
- 2. Be sure the power switch is off state as Fig B.**
- 3. If the power switch is turn on as Fig C, must turn it off as Fig B.**

# Connect The Battery (2)



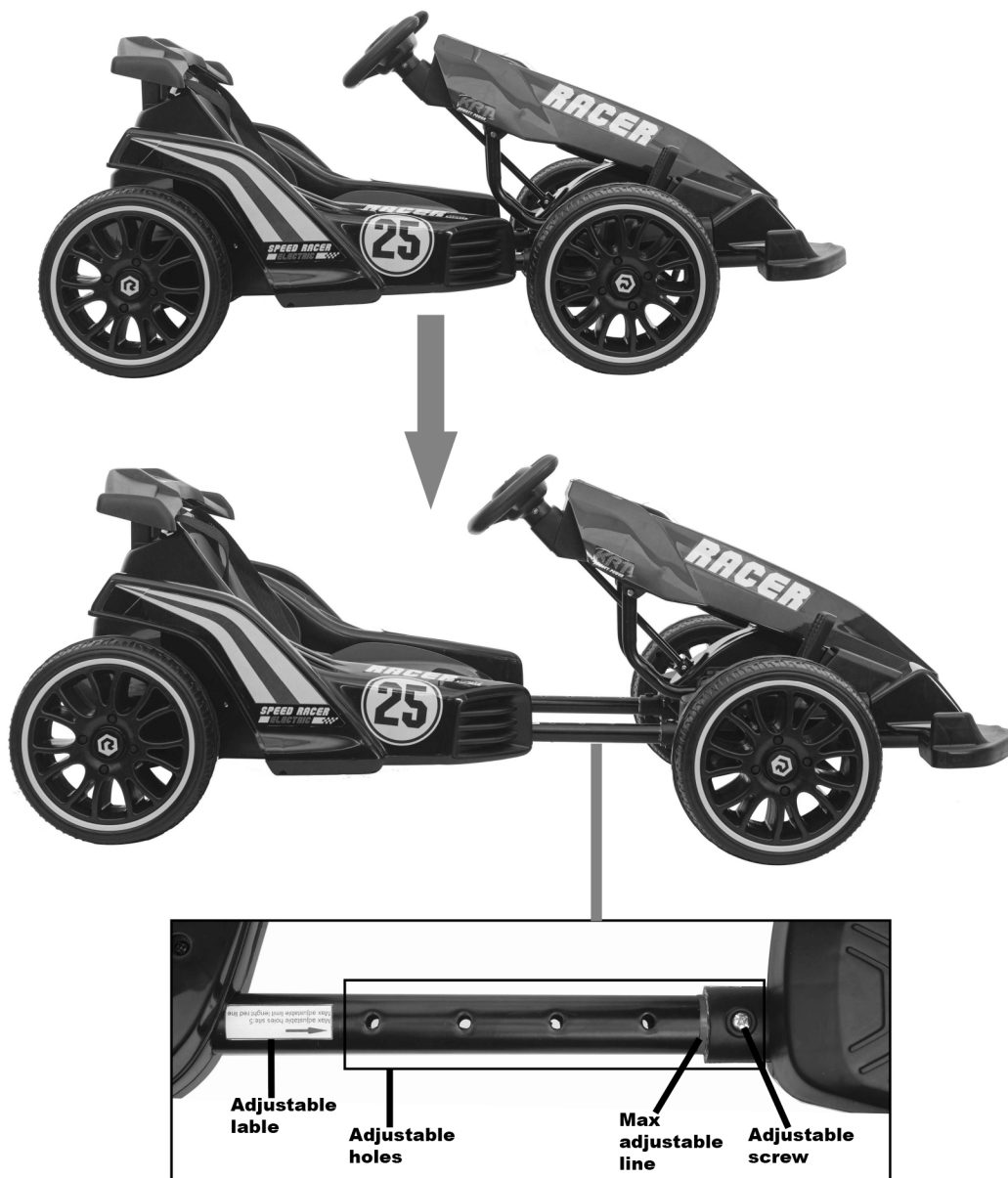
**Fig A**



- 1. Remove the screw of seat cover with socket spanner (11) as Fig A.**
- 2. Find the two cords, connect them as shown.**
- 3. Attach the seat cover back.**

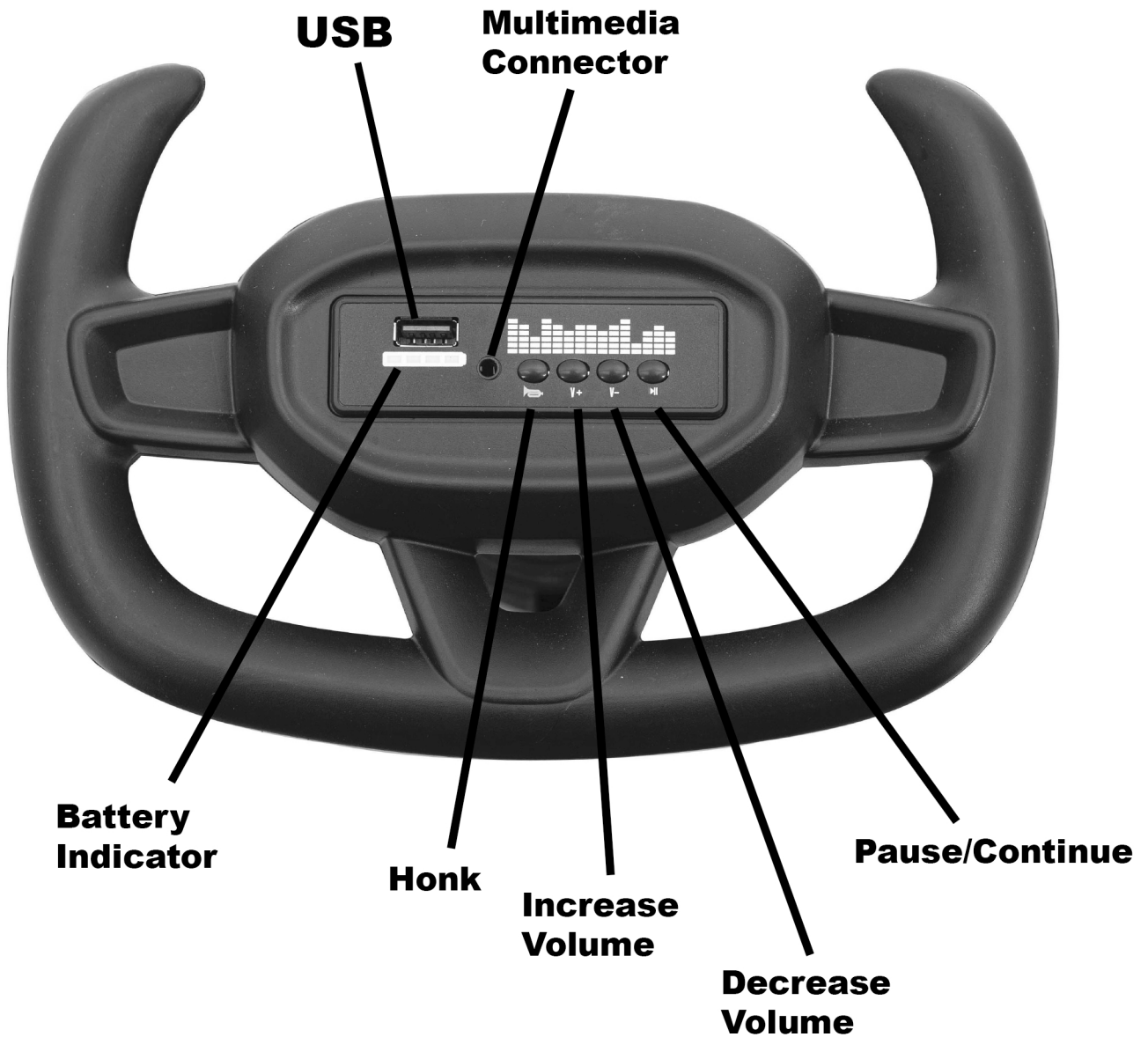
**WARNING: Only connect the plastic plug.**

# Adjusting The Length of Car

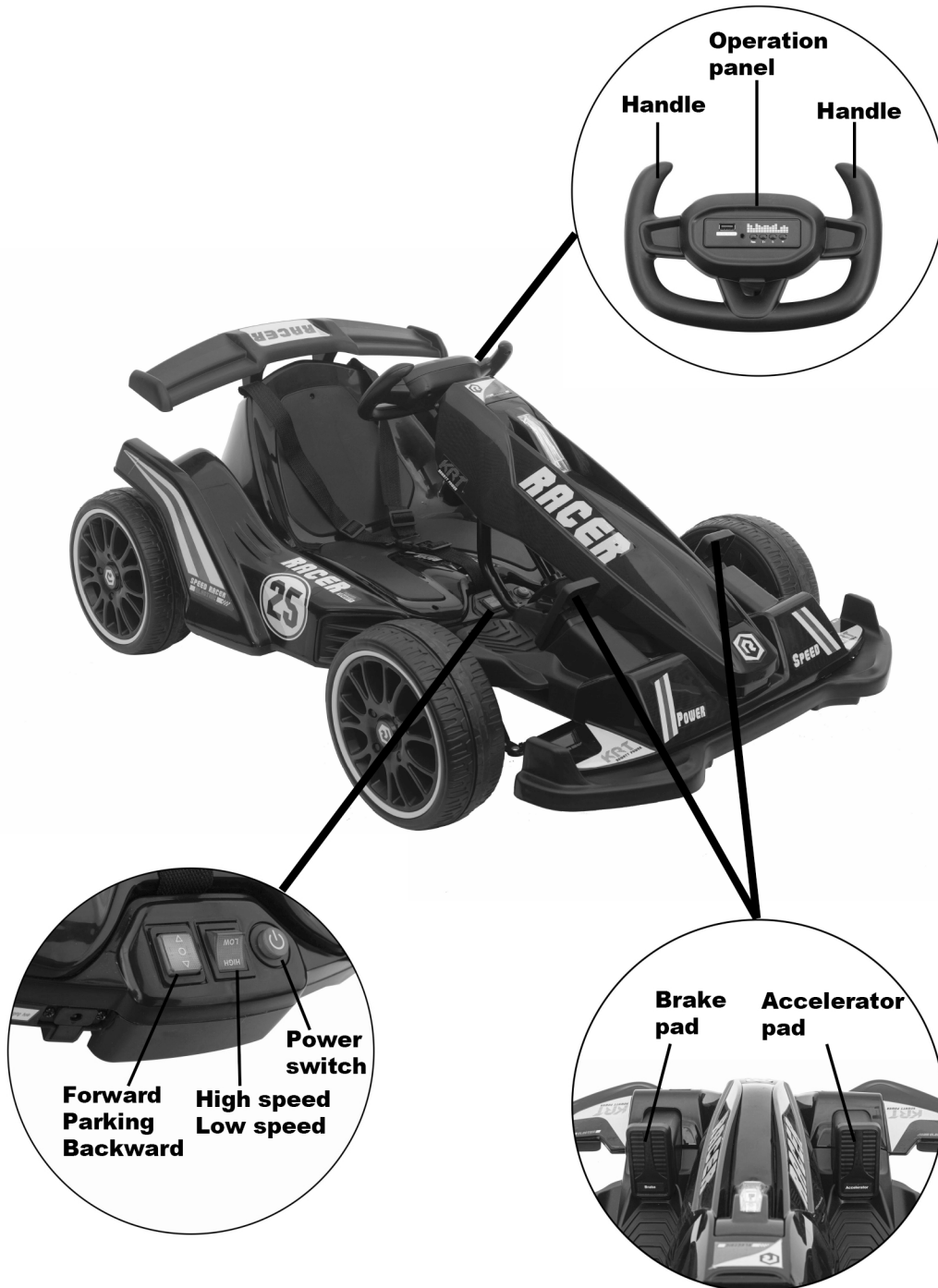


- 1. Release the adjustable screw with socket spanner (11).**
  - 2. Slide the car body to adjust the appropriate length as needed.**
  - 3. The max adjustable length is 15cm, total adjustable holes is 5.**
- WARNING: Do not slide the body to exceed the maximum adjustable line, otherwise the wire inside the body will be damaged.**

# Steering Wheel Function



# Operating Instructions



# Battery Maintenance

## Important Battery and Charger Information

- ★ **Only an adult who has read and understands the safety warnings may handle and operate the battery and battery charger. Keep away from children.**
- ★ **Charge the battery for 10 hours before using the car for the first time.**
- ★ **Charge the battery immediately after each use.**
- ★ **Charge for at least 8-10 hours, but no more than 12 hours.**
- ★ **Charge the battery at least once a month, even if the car is not used or stored.**
- ★ **Never leave the battery in a discharged condition.**
- ★ **Connect the terminal of the battery and charger, then plug the charger into a 220V AC outlet.**
- ★ **Keep the charger away from water or excessive moisture to prevent short-circuiting.**
- ★ **Only use the charger specified with the original item.**
- ★ **Do not charge the battery with any other charger.**
- ★ **Do not replace the battery with any other battery.**
- ★ **Remove damaged batteries from the car immediately. Recycle or dispose of the used batteries responsibly.**
- ★ **Do not short circuit the supply terminals.**

# General Care

- ★Regularly inspect all vehicle parts to ensure they are in good working condition.
- ★Regularly inspect the charger, cord, plug, and other related parts for damage.
- ★DO NOT operate the car if there are any damaged parts.
- ★Carefully clean the car with a damp cloth and mild soap.
- ★Do not get water in or near any electrical parts. Do not wash the car with a hose.
- ★Store the car indoors or use a tarp to cover it.
- ★Keep away from stoves, heaters, or other sources of heat.



## **WARNING**

To avoid any accidents, users must keep the positive and negative polarity connected correctly. Ensure the black plug is connected with black terminal and the red plug is connected with red terminal.

**WARNING: NEVER TRY TO ADJUST OR MODIFY THE POLARITY, OTHERWISE THE BATTERY WILL BE DAMAGED.**

**WARNING: YOU MUST CHARGE THE BATTERY FOR 10 HOURS BEFORE FIRST USE!**



## WARNING

- 1, The car is suitable for age 6+ years.
- 2, Do not take it on dangerous roads, slopes or other unsafe places.
- 3, Max. load 50kg, do not overload.
- 4, Charging must be done by an adult.
- 5, It must be assembled by an adult, and used under the guidance of the adult.
- 6, Clean with a dry cloth only.

**WARNING:** Protective equipment should be worn.  
Not to be used in traffic.

**WARNING:** This toy is unsuitable for children under 6 years due to its maximum speed.

